

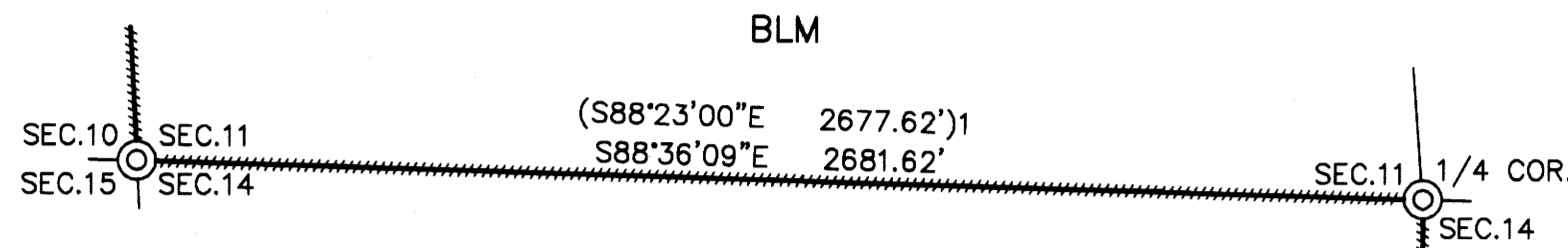
PROPERTY SURVEY LOCATED IN THE NE1/4, NW1/4 & SW1/4 OF SECTION 11 AND THE
NW1/4 & SW1/4 OF SECTION 14, TOWNSHIP 20 SOUTH, RANGE 10 WEST, W.M., DOUGLAS COUNTY, OREGON.

FILED
Date: 11-4-2021 By: JLE
This survey consists of:
Map: M180-12A&B
Narrative:
Corner Rpt:

DOUGLAS COUNTY
SURVEYOR

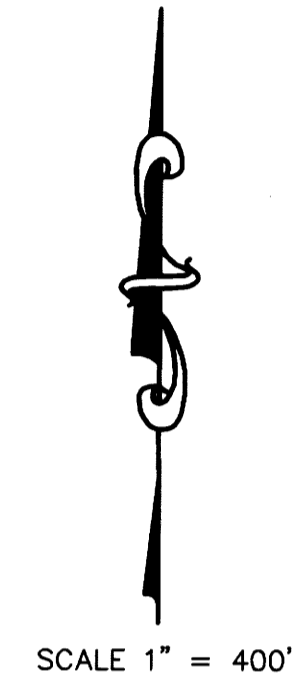
SURVEY FOR: ROSEBURG RESOURCES CO.
PO BOX 1088, ROSEBURG, OR 97470

SURVEY BY: ESTABROOK LAND SURVEYING, INC.
PO BOX 574, LAKESIDE, OR 97449



SECTION CORNER SECTIONS 10, 11, 14 & 15
FOUND MONUMENT:
A 2" IRON PIPE WITH 2 1/2" BRASS CAP MARKED
"T20S R10W S10 S11 S14 S15 1952" PER BLM PLAT #1398.
SET STEEL POST ALONGSIDE.
FOUND BT:
A 10" YEW WITH HEALED FACE AND TAG BEARS S46°E 18.48'.
NEW BT'S MARKED:
A 17" HEMLOCK, FACE SCRIBED "SW S11 BT" WITH X-CHOP AND
TAG BEARS N68°E 14.5' TO A SPIKE AT SIDE CENTER.
A 21" HEMLOCK, FACE SCRIBED "NE S15 BT" WITH X-CHOP AND
TAG BEARS S30°W 15.5' TO A SPIKE AT SIDE CENTER.
AN 18" FIR, FACE SCRIBED "SE S10 BT" WITH X-CHOP AND
TAG BEARS N79°W 20.2' TO A SPIKE AT SIDE CENTER.
LAT AND LONG PER GARMIN ETREX HAND HELD GPS:
N: 43°50'13.0" W: 123°52'02.5"

1/4 CORNER SECTIONS 11 & 14
FOUND MONUMENT:
A 1" IRON PIPE WITH 2 1/2" BRASS CAP MARKED
"1/4 S11 S14 1952" PER BLM PLAT #1398.
FOUND BT:
AN 18" HEMLOCK STUMP WITH VISIBLE SCRIBE IN OPEN
FACE BEARS S11°30'W 25.74'.
NEW BT'S MARKED:
AN 8" FIR, FACE SCRIBED "S1/4 S11 BT" WITH X-CHOP AND
TAG BEARS N27°E 11.7' TO A SPIKE AT SIDE CENTER.
A 11" FIR, FACE SCRIBED "N1/4 S14 BT" WITH X-CHOP AND
TAG BEARS S69°E 8.8' TO A SPIKE AT SIDE CENTER.
A 9" FIR, FACE SCRIBED "N1/4 S14 BT" WITH X-CHOP AND
TAG BEARS S06°E 17.7' TO A SPIKE AT SIDE CENTER.
A 13" FIR, FACE SCRIBED "N1/4 S14 BT" WITH X-CHOP AND
TAG BEARS S40°W 2.8' TO A SPIKE AT SIDE CENTER.
LAT AND LONG PER GARMIN ETREX HAND HELD GPS:
N: 43°50'13.2" W: 123°51'25.3"



ROSEBURG RESOURCES CO

BLM

LEGEND

- ⊙ FOUND MONUMENT AS NOTED
- CALCULATED PER BLM PLAT #1398
- BOUNDARY LINE MARKED WITH RED FLAGGING,
RED TREE BLAZES AND STEEL POSTS.
- ()1 RECORD PER BLM PLAT #1398
- ()2 RECORD PER BLM / I.P. ADMINISTRATIVE SURVEY

1/4 CORNER SECTIONS 14 & 23
FOUND MONUMENT:
A 1" IRON PIPE WITH 2 1/2" BRASS CAP MARKED
"1/4 S14 S23 1951" PER BLM PLAT #1398.
SET STEEL POST ALONGSIDE.
FOUND BT:
AN 18" ALDER WITH VISIBLE BARK SCRIBE AND TAG
BEARS S53°E 20.46'.
NEW BT'S MARKED:
A 17" ALDER, BARK SCRIBED "S1/4 S14 BT" WITH X-CHOP AND
TAG BEARS N53°E 21.6' TO A SPIKE AT SIDE CENTER.
A 16" ALDER, BARK SCRIBED "N1/4 S23 BT" WITH X-CHOP AND
TAG BEARS SOUTH 8.2' TO A SPIKE AT SIDE CENTER.
A 16" ALDER, BARK SCRIBED "N1/4 S23 BT" WITH X-CHOP AND
TAG BEARS S70°W 16.6' TO A SPIKE AT SIDE CENTER.
LAT AND LONG PER GARMIN ETREX HAND HELD GPS:
N: 43°49'24.4" W: 123°51'25.3"



REGISTERED
PROFESSIONAL
LAND SURVEYOR

Jerry Lee Estabrook

OREGON
JUNE 30, 1985
JERRY LEE ESTABROOK
2703

EXPIRES 12/31/21

DRAWN BY: JLE	DATE: 10/26/2021
CHECKED BY: TJE	DRAWING NO.: BURMING2
JOB NO.: 2021-66	SHEET 2 OF 2

MAP FILE M180-12-B

MAP FILE M180-12-B