

RECORD OF SURVEY

LOCATED IN

SECTION 5, T. 30 S., R. 7 W., W.M.
DOUGLAS COUNTY, OREGON

FOR: LONE ROCK TIMBERLAND CO.
P.O. BOX 1127 ROSEBURG, OREGON 97470
BY: LONE ROCK TIMBER MANAGEMENT COMPANY
P.O. BOX 1127 ROSEBURG, OREGON 97470
TRACT: HULT & KELSAY #2

DATE: SEPTEMBER 2015

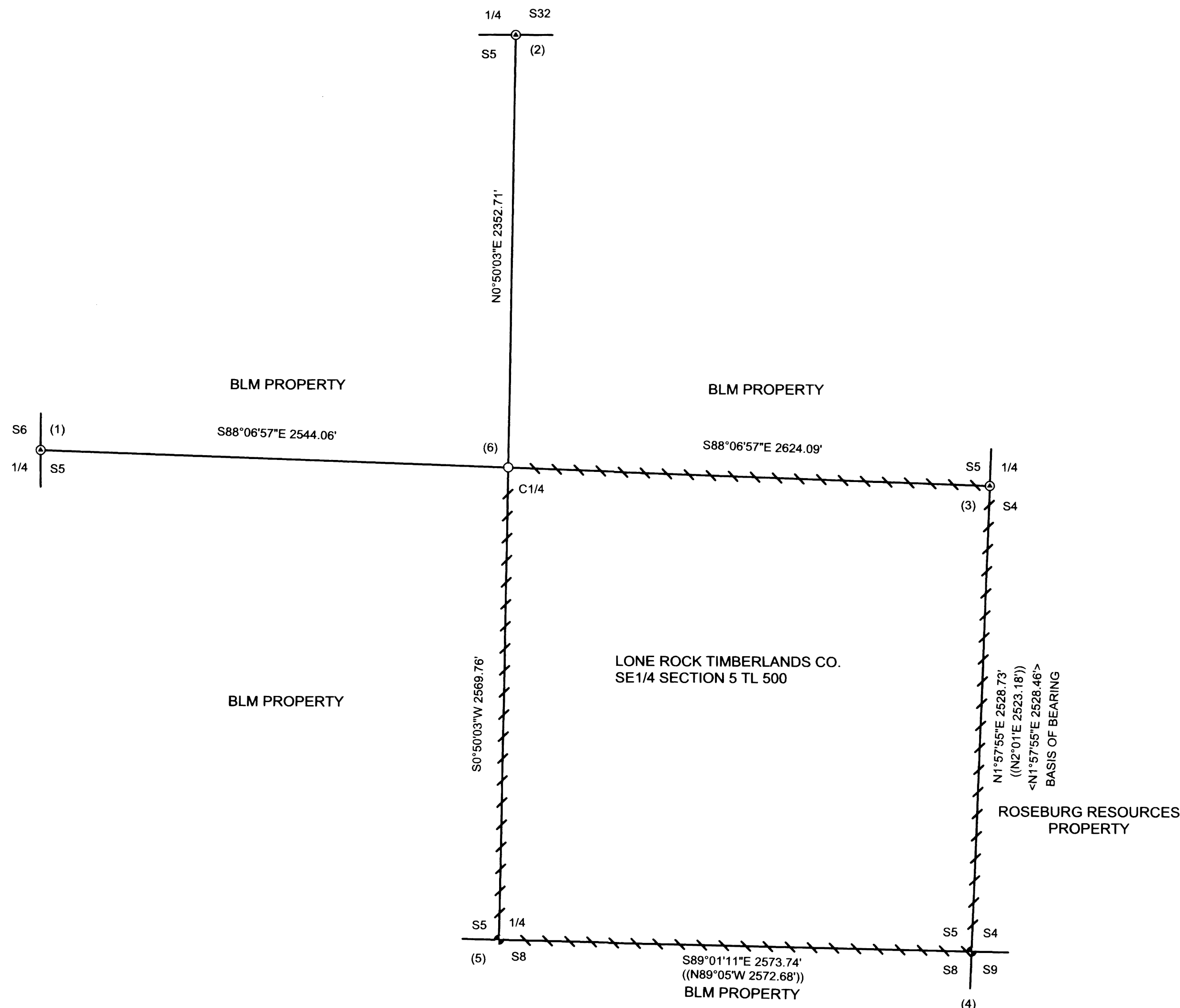
FILED
DATE: 10-9-2015 By: JC
This survey consists of:
Map: M169-79
Narrative:
Corner Rpt: DOUGLAS COUNTY SURVEYOR

NARRATIVE:

THE PURPOSE OF THIS SURVEY IS TO ESTABLISH A PROPERTY CORNER AND PROPERTY LINES FOR TIMBER MANAGEMENT PURPOSES. WE INITIATED THIS SURVEY AT THE WEST 1/4 CORNER OF SECTION 5, A COUNTY CAP SET FROM ORIGINAL EVIDENCE. WE PROCEEDED TO RUN A RANDOM CLOSED LOOP TRAVERSE EASTERLY TO THE SOUTHEAST 1/4 OF SECTION 5 WITH A TRAVERSE AROUND THE QUARTER SECTION NEAR THE APPROXIMATE PROPERTY LINES. DURING THIS TRAVERSE WE TIED INTO THE FOLLOWING CORNERS: EAST 1/4 (COUNTY BCIP) AND SE SECTION (BLM BCIP) CORNERS ARE MONUMENTS SET FROM PERPETUATED ORIGINAL AND ORIGINAL EVIDENCE RESPECTIVELY, SOUTH 1/4 (BLM BCIP) CORNER WAS SET BY PROPORTION. WE ALSO RAN A SEPARATE CLOSED LOOP TRAVERSE NORTHERLY FROM NEAR THE CENTER OF SECTION 5 TO THE NORTH 1/4 (COUNTY BCIP) CORNER OF SECTION 5 WHICH WAS SET FROM ORIGINAL EVIDENCE. WE COMPUTED AND ADJUSTED OUR TRAVERSES BY COMPASS RULE TO SET THE CENTER OF SECTION 5 ACCORDING TO THE BLM MANUAL OF INSTRUCTIONS. THIS SURVEY WAS DONE WITH A NIKON DTM 455 AND NIKON DTM 450 WITH GARY ANGIOLET, IGNACIO ROMAN, DAN SAILY, AND JOSH FOWLER ASSISTING ME.

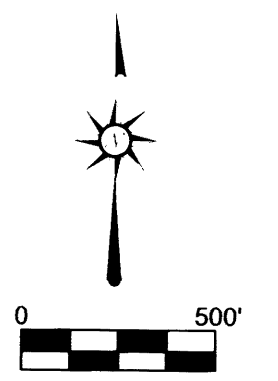
CORNER INFORMATION:

- 1) THE QUARTER CORNER BETWEEN SECTIONS 5 AND 6
FOUND 1964 COUNTY CAP PROPERLY MARKED 1 FOOT ABOVE GROUND GCDB 200640
-- 38" FIR SNAG BEARS N17 1/2°W 10.35 FEET (RECORD N16°W 9.24 FEET) HEALED FACE AND WE RETAG
-- 11" CEDAR BEARS S79°E 30.9 FEET (RECORD S79 1/2°E 31.02 FEET) HEALED FACE AND WE RETAG
-- 9" CEDAR BEARS S11°W 19.1 FEET (RECORD S11°W 19.8 FEET) HEALED FACE AND TAG
-- NEW 9" DOUGLAS FIR BEARS S80 3/4°W 20.4 FEET WE SCRIBE 1/4 S6 BT AND TAG TREE
CORNER LIES ON EXTREMELY STEEP NORTHEAST SLOPE AND IS APPROX. 100 FEET SOUTH OF SMALL DRAW.
- 2) THE QUARTER CORNER BETWEEN SECTIONS 5 AND 32
FOUND 1962 COUNTY CAP PROPERLY MARKED 0.7 FEET ABOVE GROUND GCDB 240700
-- 28" DOUGLAS FIR BEARS S11 3/4°E 9.8 FEET (RECORD S12°E 9.9 FEET) HEALED FACE AND TAG
-- 10" FIR STUB BEARS N66°W 12.9 FEET (RECORD N66 1/2°W 13.2 FEET) HEALED FACE AND TAG
-- 36" PINE BEARS N34°E 138.6 FEET AS PER RECORD, PARTIAL SCRIBING VISIBLE IN FACE AND TAG
-- NEW 18" DOUGLAS FIR BEARS N71°W 17.1 FEET WE SCRIBE T29S R7W 1/4 S32 BT AND TAG TREE
CORNER LIES ON NORTHWEST SLOPE IN STAND OF BLM TIMBER.
- 3) THE QUARTER CORNER BETWEEN SECTIONS 4 AND 5
FOUND 1964 COUNTY CAP PROPERLY MARKED 0.3 FEET ABOVE GROUND GCDB 300640
-- 16" DOUGLAS FIR BEARS N24 1/2°W 9.1 FEET (RECORD N23°W 9.5 FEET) HEALED FACE AND TAG
-- 20" DOUGLAS FIR BEARS S37 1/4°E 26.9 FEET (RECORD S37°E 26.7 FEET) HEALED FACE AND TAG
CORNER LIES ON GENTLY SLOPING OPEN OAK COVERED GROUND.
- 4) THE SOUTHEAST SECTION CORNER OF SECTION 5
FOUND 1975 BLM CAP PROPERLY MARKED 0.2 FEET ABOVE GROUND GCDB 300600
-- 23" DOUGLAS FIR BEARS N50 1/2°W 19.2 FEET (RECORD N51°W 19.1 FEET) HEALED FACE AND TAG
-- 16" DOUGLAS FIR BEARS N79 1/2°W 21.5 FEET (RECORD N80°W 21.9 FEET) HEALED FACE AND TAG
-- 18" DOUGLAS FIR BEARS N75 1/2°E 28.7 FEET (RECORD N76°E 29.4 FEET) HEALED FACE AND TAG
-- 16" DOUGLAS FIR BEARS S83 1/2°E 20.5 FEET (RECORD S84°E 20.5 FEET) HEALED FACE AND TAG
CORNER LIES ON STEEP NORTH FACING SLOPE IN EXTREMELY ROCKY SOIL.
- 5) THE QUARTER CORNER BETWEEN SECTIONS 5 AND 8
FOUND 1975 BLM CAP PROPERLY MARKED 0.3 FEET ABOVE GROUND GCDB 240600
-- 24" DOUGLAS FIR BEARS N18 1/2°W 38.25 FEET (RECORD N18 1/4°W 38.94 FEET) HEALED FACE AND TAG
-- 22" DOUGLAS FIR BEARS S2 3/4°W 19.1 FEET (RECORD SOUTH 19.47 FEET) HEALED FACE AND TAG
CORNER LIES ON GENTLE GROUND AND IS IN THE MIDDLE OF NARROW BAND OF TIMBER WITH BRUSHY OPEN AREAS TO THE EAST AND WEST.
- 6) THE CENTER QUARTER OF SECTION 5
SET 5/8" X 40" IRON ROD WITH 2 1/2" ALUMINUM CAP MARKED LONE ROCK TIMBER T 30 S R 7 W C1/4 S5
2015 PLS 2291 GCDB 240640
-- 21" DOUGLAS FIR BEARS N38 1/2°W 17.1 FEET WE SCRIBE T30S R7W C 1/4 S5 BT AND TAG TREE
-- 18" DOUGLAS FIR BEARS N34 3/4°E 36.9 FEET WE SCRIBE T30S R7W C1/4 S5 BT AND TAG TREE
-- 23" DOUGLAS FIR BEARS S70 1/4°E 7.65 FEET WE SCRIBE T30S R7W C1/4 S5 BT AND TAG TREE
-- 20" DOUGLAS FIR BEARS S86 1/4°W 50.8 FEET WE SCRIBE T30S R7W C1/4 S5 BT AND TAG TREE
CORNER LIES ON STEEP SOUTH FACING SLOPE. WE PUT A METAL POST APPROX. 1.0 FEET NORTH OF THE CORNER.



LEGEND	
⊙	FOUND COUNTY CAP AS NOTED IN CORNER INFORMATION
⚡	FOUND BLM BRASS CAP AS NOTED IN CORNER INFORMATION
○	SET 5/8" X 40" IRON ROD WITH 2 1/2" ALUMINUM CAP AS NOTED IN CORNER INFORMATION
(())	BLM FIELD NOTES PAGES 15605 - 15607 FILED IN DOUGLAS COUNTY SURVEYORS OFFICE
< >	JOHNSTONE 1984 SURVEY MAP M97 - 14 FILED IN DOUGLAS COUNTY SURVEYORS OFFICE
	LINES TAGGED, PAINTED, BLAZED DURING THE COURSE OF THIS SURVEY
(1)	CORNER DESCRIPTION NUMBER

REGISTERED PROFESSIONAL LAND SURVEYOR
Ken W. Hoffine
OREGON
JULY 16, 1985
KEN W. HOFFINE
2291
EXPIRES: 6/30/2017



MAP FILE M169-79

MAP FILE M169-79