

FILED
Date: 9-9-2015 By: JC
This survey consists of:
Map: M169-67
Narrative:
Corner Rpt:
DOUGLAS COUNTY SURVEYOR

JOE HALL ROAD - FS ROAD 1610-300

A CENTER-NORTH 1/16

PURPOSE

THE PURPOSE OF THIS SURVEY WAS TO POST NATIONAL FOREST SYSTEM LANDS PROPERTY BOUNDARY LINES, AND TO MAINTAIN CORNERS AND ACCESSORIES AS NEEDED.

NARRATIVE

THIS SURVEY WAS PERFORMED WITH A LEICA 1103+ TOTAL STATION AND TRIMBLE R6 BASE AND ROVER RTK GPS SYSTEM.

THE LINES SHOWN HEREON WERE PREVIOUSLY POSTED IN 1972 BY HOFFBUHR IN M42-70 DURING HIS SURVEY AND SUBDIVISION OF SECTION 29. MONUMENTS FROM THAT SURVEY WERE FOUND AND USED TO CONTROL THE LENGTH AND DIRECTION OF THE NFSL PROPERTY LINES. STEEL POSTS WITH BOUNDARY SIGNS FROM THAT SURVEY WERE FOUND AND TIED AS WELL AS SOME CARSONITE POSTS FROM A PREVIOUS MAINTENANCE ATTEMPT, SOME OF THE CARSONITES WERE FOUND OFFLINE AND WERE REMOVED IN THIS SURVEY. THE LINES LACKED SUFFICIENT POSTS TO MAINTAIN THE BOUNDARY AND RE-SUREY WAS REQUIRED TO BRING THE LINES TO NATIONAL FOREST STANDARDS.

A TRUE LINE TRAVERSE WAS RUN BETWEEN ALL SHOWN CORNERS, THE TRAVERSE WAS CLOSED ON SEVERAL GPS CONTROL POINTS NEAR CORNERS (A) AND (D). ALL TRAVERSE, RTK AND STATIC GPS MEASUREMENTS WERE INCLUDED IN A LEAST SQUARES ADJUSTMENT. STATIC GPS DATA AT THE BASE STATION WAS ADJUSTED USING OPUS.

THE PROPERTY LINE WAS POSTED BY PULLING OFFSETS FROM TRAVERSE CONTROL POINTS AND SIDESHOTS TO LINE AND SETTING 6 FT ALUMINUM POSTS WITH NATIONAL FOREST BOUNDARY SIGNS ATTACHED ON-LINE AT NO MORE THAN 200 FT INTERVALS TO ACHIEVE LINE OF SIGHT BETWEEN POSTS.

AT THE QUARTER CORNER FOR SECTIONS 29 & 32, SET A MONUMENT AT THE TRUE POINT WHERE THE PREVIOUS SURVEY, M42-70, HAD SET A WITNESS CORNER. THE TRUE CORNER FALLS AT THE FOOT OF A CUT SLOPE FOR AN OLD QUARRY ROAD, THE QUARRY APPEARS TO NO LONGER BE IN USE AND 3" FIR TREES ARE GROWING IN THE ROAD SURFACE. THE POSITION OF THE 1/4 CORNER WAS DETERMINED AT RECORD BEARING AND DISTANCE FROM THE WITNESS CORNER PER MANUAL OF INSTRUCTIONS BY EXTENDING LINE (B)-(C) THE RECORD DISTANCE OF 20.00 FEET.

MAN MADE & TOPOGRAPHIC FEATURES SHOWN CROSSING LINE WERE DERIVED FROM FIELD MEASUREMENTS AND/OR FROM ORTHO IMAGERY.

ALL BEARINGS SHOWN HEREON ARE MEAN GEODETIC, NAD83 (2011)(EPOCH 2010.0000), ALL DISTANCES ARE INTERNATIONAL FEET AT GROUND. BEARING TREES WERE TIED FROM THE CORNER POSITION WITH BEARINGS TO CENTER AND DISTANCE TO AN ALUMINUM NAIL SET AT SIDE CENTER 1 FT ABOVE THE ROOT CROWN, BEARING TREES FOR CORNER (D) WERE TIED FROM CORNER (C). ALL NEW BT'S WERE BLAZED WITH A DOUBLE FACE AND SCRIBED AS DESCRIBED, NEW BT'S INCLUDE 3/4" BRASS WASHER MARKED "OR PLS #89396" NAILED FLUSH IN THE LOWER FACE BETWEEN THE B AND T. BT'S HAVE RED PAINT ON FACES AND A 6" PAINTED BAND AT HEAD HEIGHT WITH BEARING TREE AND ATTENTION SIGNS NAILED AT EYE HEIGHT. BT DIAMETERS REPORTED ARE AT BREST HEIGHT, MONUMENTS SIZES ARE REPORTED AS OUTSIDE DIAMETER. "CS", "M" & "P" ARE SURVEYS AND MAP DOCUMENTS FILED AND FOUND AT THE DOUGLAS COUNTY SURVEYORS OFFICE(DCSO).

HISTORY OF SURVEYS

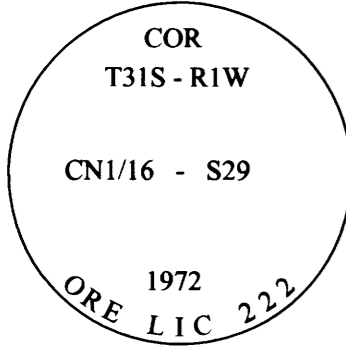
- 1857 - DENNIS HATHORN, DEPUTY SURVEYOR, UNDER GLO CONTRACT #73 DATED JUNE 8TH 1857, ORIGINAL SUBDIVISIONS OF T31S R1W.
1968 - JOHN M. POWELL ET AL., FOR DCSO, IN CS 54/71, FINDS NO REMAINING EVIDENCE OF THE 1/4 CORNER FOR SECTIONS 29 & 32.
1972 - J.A. HOFFBUHR, PLS# 222, IN M42-70, SUBDIVISION OF SECTION 29 & POSTS NATIONAL FOREST SYSTEM LANDS PROPERTY BOUNDARY LINES.
1979 - KURT C. WEAVER, PLS# 1679, IN M81-58, FINDS AND MAINTAINS THE WITNESS CORNER 1/4 CORNER FOR SECTIONS 29 & 32.
1981 - JIM LANDRUM, IN USFS CORNER CARDS, MAINTAINS THE CENTER 1/4 & SOUTH 1/4, SECTION 29.
1997 - RAYMOND F. BROWN, PLS# 2391, IN P1997-0042, LAND PARTITION OF THE SE1/4 OF THE NW1/4 SECTION 29, TIES TO THE CENTER 1/4 OF SECTION 29.
2014 - JOHN RANSOM, PLS# 2446, IN CS 65/85-3, FINDS AND MAINTAINS WITNESS CORNER 1/4 CORNER FOR SECTIONS 29 & 32.

GEODETIC COORDINATES

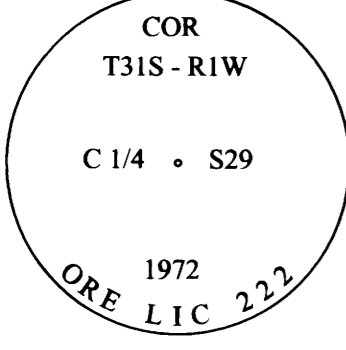
NAD83 (2011)(EPOCH 2010.0000)
Table with 6 columns: PLAT ID, CORNER, GCDB ID, FS INDEX ID, LATITUDE, LONGITUDE. Rows A-D.

ELK WRP LAND LINE
RECORD OF SURVEY FOR THE
UMPQUA NATIONAL FOREST
IN THE EAST 1/2 OF SECTION 29, T.31S., R.1W., W.M.
JULY 13, 2015

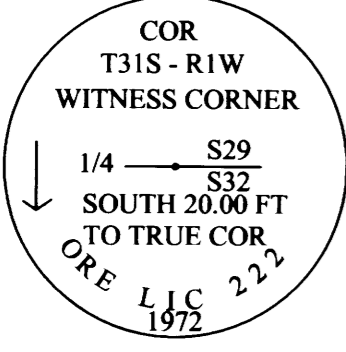
CORNER DESCRIPTIONS



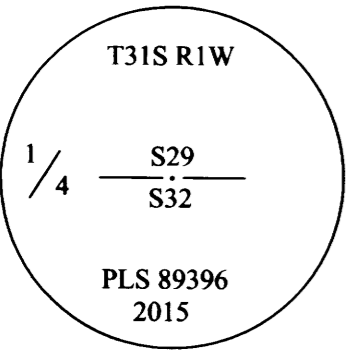
A: CENTER NORTH 1/16
SECTION 29, T.31S., R.1W.
FOUND: A 3" BRASS CAP ON 2-1/2" GALVANIZED IRON PIPE, PROJECTING 4 INCHES ABOVE A MOUND OF STONE.
ACCESSORIES:
A 19" FIR BEARS, S7°45'E - 24.6 FT, WITH A HEALED DOUBLE BLAZE. (S7°15'E - 24.4 FT)1972
A 17" FIR HIGH STUMP BEARS, S86°45'W - 36.0 FT, WITH A HEALED DOUBLE BLAZE. (S86°30'W - 36.1 FT)1972
NEW ACCESSORIES:
A 10" PINE BEARS, N56°07'E - 100.2 FT, MARKED "CN1/16S29" "BT" ON A DOUBLE BLAZE.



B: CENTER 1/4
SECTION 29, T.31S., R.1W.
FOUND: A 3" BRASS CAP ON 2-1/2" GALVANIZED IRON PIPE, PROJECTING 4 INCHES ABOVE A MOUND OF STONE.
ACCESSORIES:
A 16" FIR BEARS, S71°15'W - 7.2 FT, WITH A HEALED DOUBLE BLAZE, TREE LEANS HEAVY TO THE WEST. (S75°15'W - 6.9 FT)1972
A 19" FIR BEARS, N56°30'E - 20.5 FT, WITH A HEALED DOUBLE BLAZE. (N57°E - 20.5 FT)1972



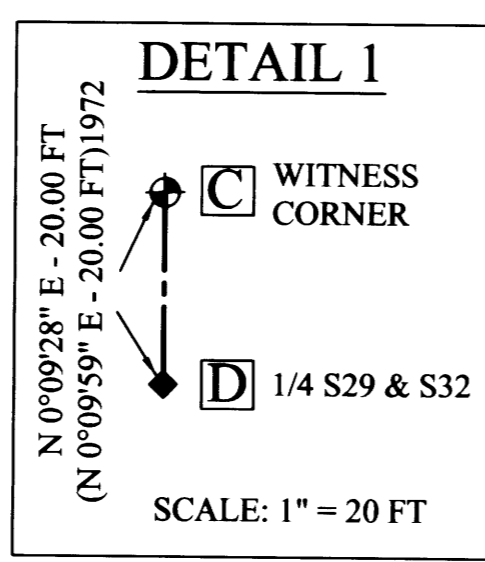
C: WITNESS CORNER
WITNESS CORNER 1/4 CORNER FOR SECTIONS 29&32, T.31S., R.1W.
FOUND: A 3" BRASS CAP ON 2-1/2" GALVANIZED IRON PIPE, LEANING HEAVY TO THE NORTH AND PROJECTING 5 INCHES ABOVE A MOUND OF STONE. UNPACK STONE MOUND, STRAIGHTEN PIPE & REPACK STONE, MONUMENT NOW PROJECTS 1 INCH ABOVE A MOUND OF STONE.
ACCESSORIES:
A 19" FIR BEARS, S24°24'W - 179.4 FT, WITH A HEALED DOUBLE BLAZE. (S24°21'W-179.3')1979
A 20" FIR BEARS, N35°37'E - 81.7 FT, WITH A HEALED DOUBLE BLAZE. (N35°56'E-82.1')1979



D: QUARTER CORNER
SECTIONS 29 & 32, T.31S., R.1W.
FOUND: NO MONUMENT AT CORNER POSITION, FOUND WITNESS CORNER PER M42-70.
SET: A 5/8" x 30" REBAR WITH A 2" ALUMINUM CAP PROJECTING 2 INCHES ABOVE A MOUND OF STONE.
ACCESSORIES: (USE BEARING TREES FOR WITNESS CORNER BY HOFFBUHR PER M42-70)
A 19" FIR BEARS, S27°18'W - 161.4 FT, WITH A HEALED DOUBLE BLAZE.
A 20" FIR BEARS, N28°51'E - 98.7 FT, WITH A HEALED DOUBLE BLAZE.

LEGEND

- POSTED PROPERTY LINE
FOUND BRASS CAP PER M42-70
SET MONUMENT AS DESCRIBED
REFERENCE TO CORNER DESCRIPTIONS
RECORD MEASUREMENT (SEE HISTORY OF SURVEYS)
NFSL NATIONAL FOREST SYSTEM LANDS
DCSO DOUGLAS COUNTY SURVEYORS OFFICE
WRP WATERSHED RESTORATION PROJECT



PRIVATE

NFSL

POWER LINE

ELK CREEK

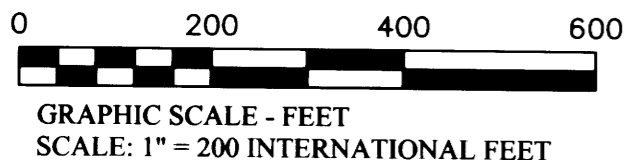
COUNTY ROAD NO. 1-A

COUNTY ROAD NO. 1

SEE DETAIL 1

D 1/4 S29 & S32

I, JONATHAN B. DREW II, A REGISTERED LAND SURVEYOR IN THE STATE OF OREGON, HEREBY CERTIFY THAT THIS PLAT AND THE NOTES HEREON ARE A TRUE AND CORRECT REPRESENTATION OF A SURVEY I PERFORMED IN JULY 2015, AT THE REQUEST OF THE USDA FOREST SERVICE, IN ACCORDANCE WITH THE STATUTES OF THE STATE OF OREGON AND THE BLM MANUAL OF SURVEYING INSTRUCTIONS, 2009.



Jonathan B. Drew II
JONATHAN B. DREW II, PLS
USDA FOREST SERVICE
3106 PIERCE PARKWAY, SUITE D
SPRINGFIELD, OR 97477
(541)-225-6474

PLOTTER: HP DESIGNJET 500
INK: BLACK C4844A
MEDIA: DOUBLE MATTE MYLAR BF780IJ

MAP & TAX LOTS:
MAP: 3101W29; LOTS: 200, 400, 500, 900 & 1000
MAP: 3101W32; LOTS: 400 & 500

REGISTERED PROFESSIONAL LAND SURVEYOR
Jonathan B. Drew II
OREGON
DECEMBER 3, 2014
JONATHAN B. DREW II
89396

EXPIRES: 12/31/2015

REVIEWED BY
John Ransom 8/25/2015
SIGNATURE DATE
I CERTIFY THAT THIS SURVEY WAS PERFORMED AT THE REQUEST OF THE UMPQUA NATIONAL FOREST SUPERVISOR
Alice B. Carlson 8/28/15
SIGNATURE DATE