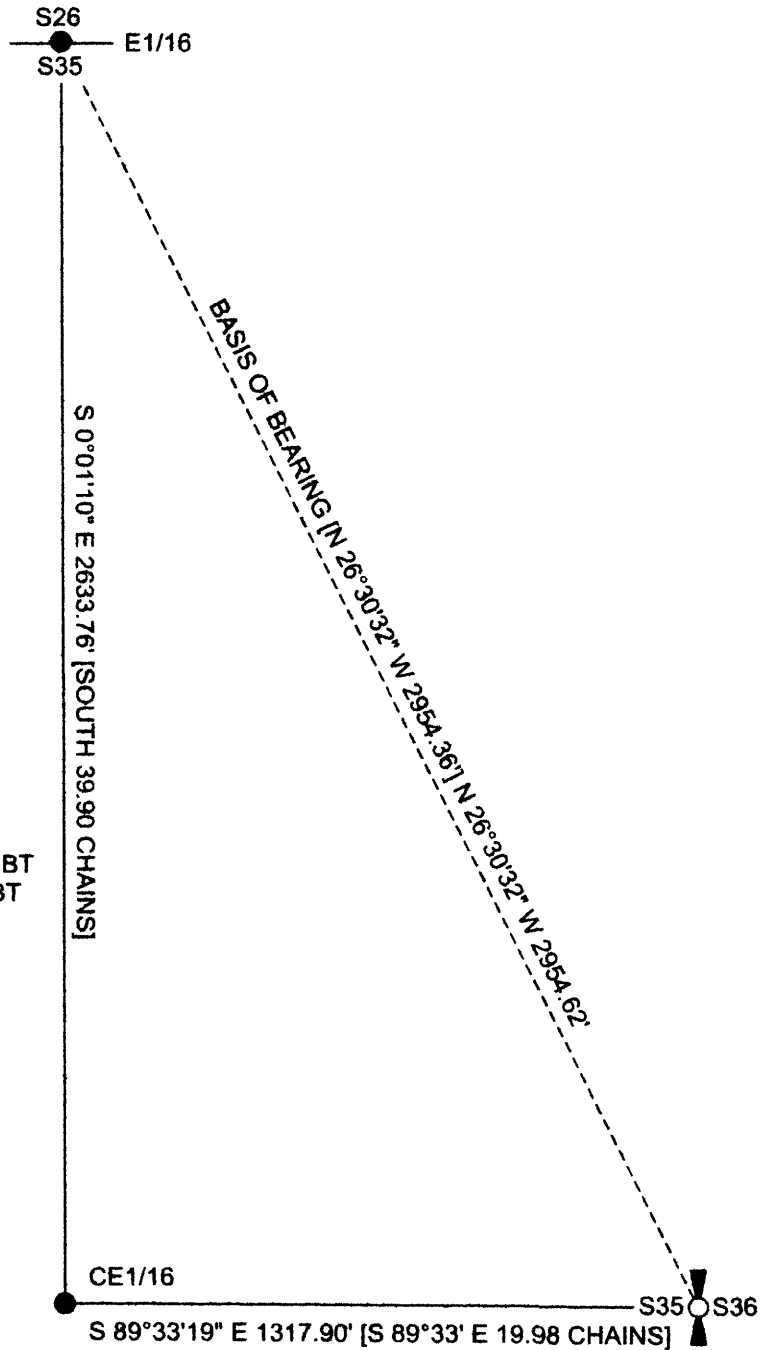
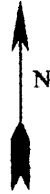


RECORD OF SURVEY
FOR: ROME CREEK TIMBER 1 LLC
NE1/4, SECTION 35, T.23 S., R.8 W., W.M.
DOUGLAS COUNTY, OREGON
20 NOVEMBER 2014

FILED
 DATE: 3/2/2015 BY: hw
 THIS SURVEY CONSISTS OF:
 MAP: M169-6
 NARRATIVE: _____
 CORNER RPT: _____
 DOUGLAS COUNTY
 SURVEYOR



E1/16 CORNER SECTIONS 26,35
 FOUND BLM BRASS CAP DATED 1984
 WITH THE FOLLOWING ACCESSORIES:
 17" D. FIR BEARS N 8-1/2° E 23.4' - HEALED FACE
 23" D. FIR BEARS S 1° E 13.9' - HEALED FACE
 STEEL POST ADJACENT TO CORNER

CE1/16 CORNER SECTION 35
 SET 5/8" X 30" REBAR WITH 2-1/2" ALUMINUM CAP
 AT RECORD BEARING AND DISTANCE FROM THE ONE
 REMAINING BEARING TREE
 11" D. FIR BEARS N 63° W 16.8' - HEALED FACE AND "X"
 NEW BEARING TREES THIS SURVEY
 11" D. FIR BEARS S 70° W 5.0' - BLAZED, SCRIBED CE1/16 S35 BT
 8" D. FIR BEARS N 32° W 4.9' - BLAZED, SCRIBED CE1/16 S35 BT
 STEEL POST ADJACENT TO CORNER

E1/16
 C - - - C
 S35
 2014
 54633LS

1/4 CORNER SECTIONS 35,36
 FOUND DOUGLAS COUNTY BRASS CAP DATED 1956
 WITH THE FOLLOWING ACCESSORIES:
 56" D. FIR STUMP BEARS N 52° E 20.5' - NO MARKS
 14" D. FIR SNAG BEARS S 50° E 3.6' - HEALED FACE
 28" D. FIR STUMP BEARS S 78-1/2° W 24.4' - HEALED FACE
 28" HEMLOCK BEARS S 43° W 22.4' - HEALED FACE
 STEEL POST ADJACENT TO CORNER

NARRATIVE:

THE PURPOSE OF THIS SURVEY IS TO DOCUMENT THE MARKING OF TRUE LINE BETWEEN EXISTING CORNERS OF SECTION 35, TOWNSHIP 23 SOUTH, RANGE 8 WEST, WILLAMETTE MERIDIAN.

EXISTING CORNERS WERE TIED BY GROUND TRAVERSE FOR CONTROL AND HELD IN THEIR AS TIED POSITIONS. THE CE 1/16 CORNER WAS MISSING AND REMONUMENTED AT RECORD BEARING AND DISTANCE FROM THE ONE REMAINING BEARING TREE.

TRUE LINE WAS MARKED WITH RED PAINTED BLAZES, RED FLAGGING AND 5-1/2' GALVANIZED STEEL POSTS SET AT AN AVERAGE INTERVAL OF 200'

THE BASIS OF BEARING FOR THIS SURVEY WAS THE INVERSE BEARING BETWEEN THE EAST 1/16 CORNER ON THE NORTH LINE OF SECTION 35 AND THE EAST 1/4 CORNER OF SECTION 35 PER THE 1987 BUREAU OF LAND MANAGEMENT DEPENDENT RESURVEY AND SUBDIVISION OF SECTION 35, TOWNSHIP 23 SOUTH, RANGE 8 WEST, WILLAMETTE MERIDIAN.

THIS SURVEY WAS PERFORMED USING A NIKON TOTAL STATION.

LEGEND

- 1/4 CORNER AS NOTED
- 1/16 CORNER AS NOTED
- BUREAU OF LAND MANAGEMENT 1987 DEPENDENT RESURVEY AND SUBDIVISION SECTION 35 RECORD DATA
- BLM BUREAU OF LAND MANAGEMENT POSTED LINE

REGISTERED
 PROFESSIONAL
 LAND SURVEYOR
Ronald L. Rice
 OREGON
 JULY 9, 2002
 RONALD L. RICE
 54633LS

EXPIRATION DATE: 12-31-2016

Northwest Land Surveying, Inc.
 P. O. Box 2827
 FLORENCE, OR 97439 541-997-9201

FILE NAME		
14-100S35		
SCALE	DATE	DRAWN BY
400 Ft/in	11-20-2014	RLR
JOB	REVISION	SHEET
WAGGONER 35		1/1

This map drawn with TRAVERSE PC Software