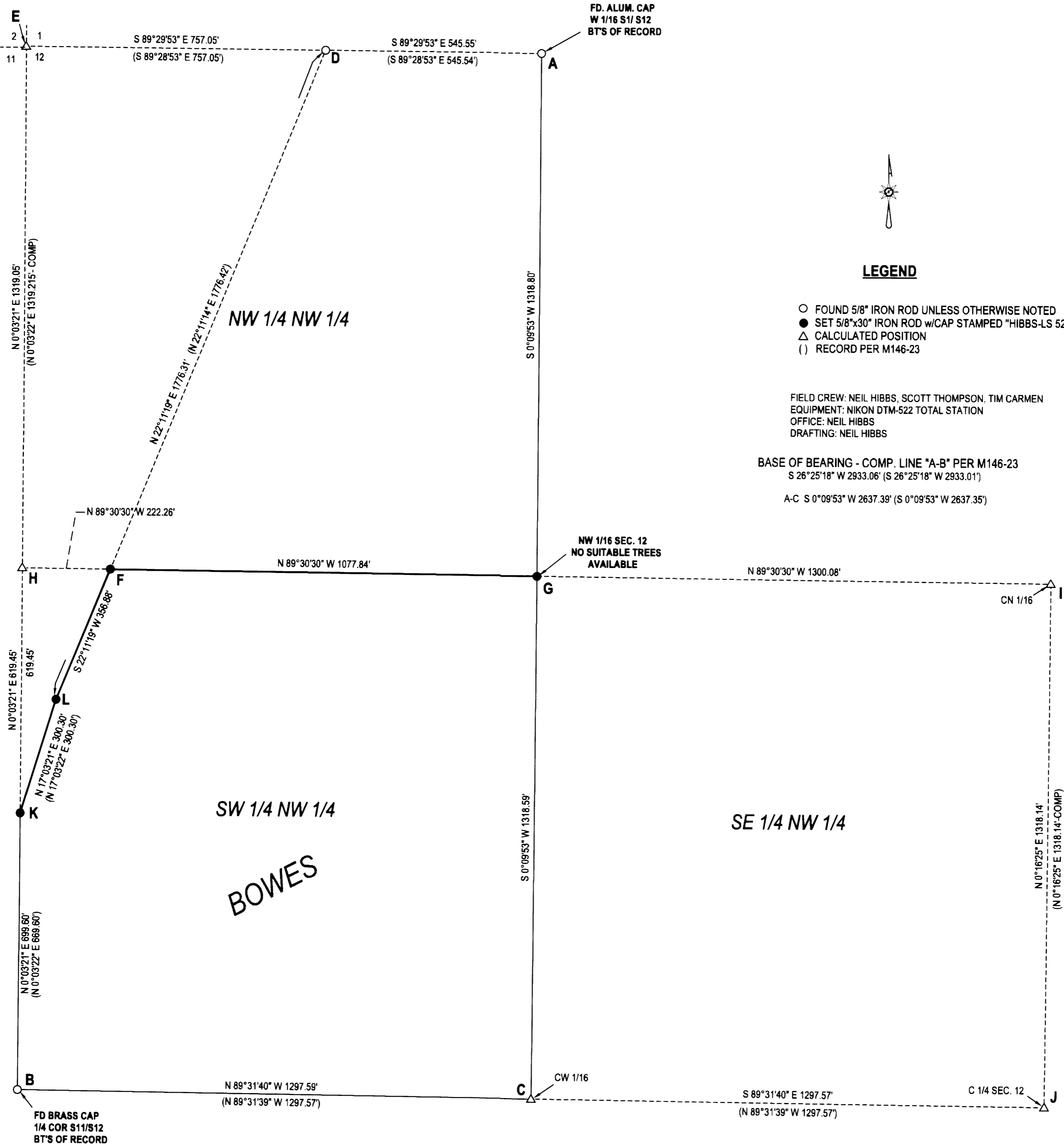


FILED  
 Date: 7/27/2015 By: X  
 This survey consists of:  
 Map: M169-58  
 Narrative:  
 Corner Rept.:  
 DOUGLAS COUNTY  
 SURVEYOR



**NARRATIVE:**

THE PURPOSE OF THIS SURVEY WAS TO MONUMENT THE NORTH AND NORTHWESTERLY LINES OF THE BOWES' PROPERTY. MONUMENTS FOUND AT POINT "A" AND "B" WERE HELD AS A BASE OF BEARING PER M146-23. POINT "C" WAS CALCULATED AT A PROPORTIONED DISTANCE-DISTANCE INTERSECTION FROM POINTS "A" AND "B". POINT "J" WAS CALCULATED AT RECORD DISTANCE FROM POINT "C" ON EXTENSION OF LINE "B-C". POINT "I" WAS CALCULATED AT RECORD BEARING AND DISTANCE FROM POINT "J". POINT "E" WAS CALCULATED AT RECORD DISTANCE FROM POINT "D" ON AN EXTENSION OF LINE "A-D". POINT "H" WAS CALCULATED AS MID-POINT BETWEEN POINTS "B" AND "E". POINT "K" WAS SET ON LINE "B-H" AT RECORD DISTANCE FROM POINT "B". POINT "L" WAS SET AT RECORD DISTANCE FROM POINT "K" AT RECORD ANGLE OFF OF LINE "K-H". POINT "F" WAS SET AT INTERSECTION OF LINE "D-L" AND LINE "H-I". POINT "G" WAS SET AT INTERSECTION OF LINE "A-C" AND LINE "H-I". LINE WAS MARKED WITH LATH FROM POINT "K" TO POINT "L" TO POINT "F" TO POINT "G".

<b>SURVEY</b> LYING IN THE NW 1/4 SEC. 12, T27S, R5W WILLAMETTE MERIDIAN, DOUGLAS COUNTY, OREGON		REGISTERED PROFESSIONAL LAND SURVEYOR  <i>J. Neil Hibbs</i>
CLIENT: PHILIP AND CYNTHIA BOWES 978 W. ELAINE ST. ROSEBURG, OR. 97471	SURVEYOR: <b>NEIL HIBBS</b> LAND SURVEYING, INC. <small>4738 LOCKWOOD BLVD. NO. ROSEBURG, OR. 97471 phone: 541-857-4303 fax: 541-857-4304 e-mail: neilhibbs@willbllaw.com</small>	
DWG SCALE: 1"= 200'	JOB NO.: 1562-01	DATE: JULY 2015
		PAGE 1 OF 1

OREGON  
 JANUARY 12, 1989  
**F. NEIL HIBBS**  
 52989  
 EXPIRATION DATE  
 6/30/2017