

# MAP OF SURVEY

LOCATED IN  
THE NW 1/4 OF SECTION 23, T. 29 S.  
R. 7 W., W.M. DOUGLAS COUNTY, OREGON

FOR: LONE ROCK TIMBERLAND CO.  
P.O. BOX 1127 ROSEBURG, OREGON 97470  
AND: ALEX FREADMAN  
2001 FREADMAN LANE WINSTON, OREGON 97496  
BY: LONE ROCK TIMBER MANAGEMENT COMPANY  
P.O. BOX 1127 ROSEBURG, OREGON 97470  
TRACT: McCLARTY DATE: JUNE 2015

FILED

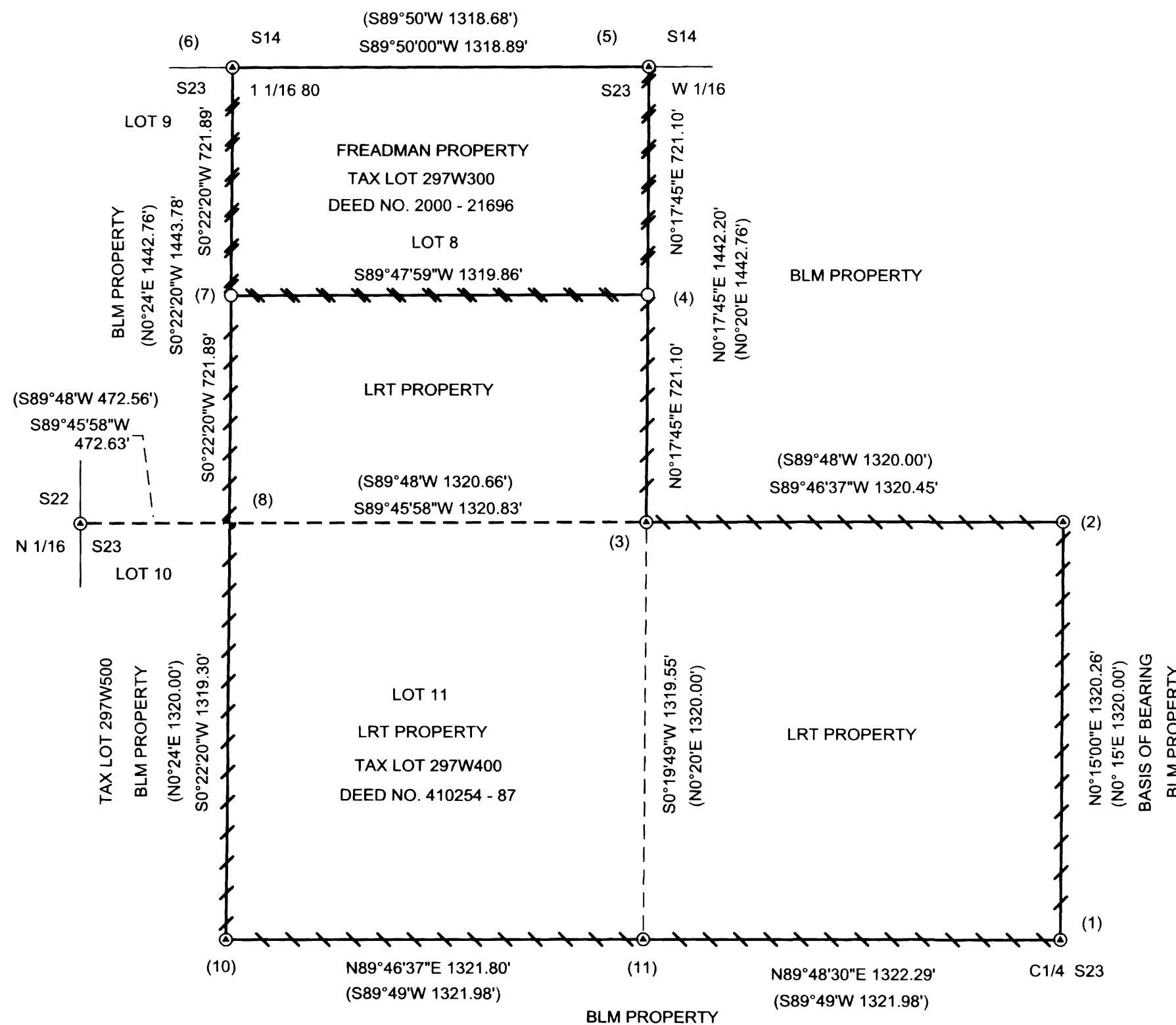
Date: 7-20-2015 By: XC  
This survey consists of:  
Narrative: \_\_\_\_\_  
Corner Rpt: \_\_\_\_\_  
Map M169-56  
DOUGLAS COUNTY  
SURVEYOR

## NARRATIVE:

THIS SURVEY WAS CONDUCTED TO ESTABLISH PROPERTY CORNERS AND PROPERTY LINES FOR TIMBER MANAGEMENT PURPOSES. THE NORTH AND WEST LINES OF SECTION 23 WERE ORIGINALLY SURVEYED IN 1854 BY NATHANIEL FORD AND THEN RETRACED UNDER SPECIAL INSTRUCTION BY MENSCH IN 1924. THE SOUTH AND WEST LINES OF SECTION 23 WERE ORIGINALLY SURVEYED BY ROY CAMBELL IN 1909. THE SUBDIVISION OF SECTION 23 WAS DONE BY THE BLM, JELLY AND RODGERS IN 1981.

WE INITIATED OUR SURVEY AT THE CENTER NORTH 1/16 CORNER (BLM BCIP) OF SECTION 23 AND RAN A CLOSED LOOP RANDOM TRAVERSE NEAR THE PROPERTY LINES AROUND THE LONE ROCK PROPERTY SHOWN ON THIS MAP. WE ALSO RAN A RANDOM CLOSED LOOP TRAVERSE TO THE 1/16 CORNERS (BLM BCIP) ON THE NORTH AND EAST LINES OF SECTION 23 AS SHOWN. THE TRAVERSES WERE ADJUSTED IN TRAVERSE PC BY THE COMPASS RULE METHOD. WE COMPUTED THE PROPORTIONAL SUBDIVISION FOR LOT 8 ACCORDING TO THE 2009 BLM MANUAL OF SURVEY INSTRUCTIONS, AND SET IRON RODS FOR THE NE, NW, AND SW CORNERS OF THE SOUTH 1/2 OF LOT 8. THE BOUNDARY LINES ON THE LONE ROCK PROPERTY AGAINST THE BLM PROPERTY WERE MARKED WITH BLUE AND RED PROPERTY LINE RIBBON, TREES ALONG THE BOUNDARY LINE WERE BLAZED AND PAINTED WITH FLUORESCENT RED PAINT AND LRT PROPERTY LINE TAGS WERE INSTALLED ON TREES NEAR THE PROPERTY LINE.

LRT'S NEIGHBOR, ALEX FREADMAN REQUESTED LRT TO MARK THE PROPERTY LINES ON THE EAST AND WEST LINE OF THE NORTH 1/2 OF LOT 8. ON PROPERTY LINES OF ALEX FREADMAN WE ADDITIONALLY INSTALLED METAL FENCE POSTS INTERVISIBLE WITHIN 1 FOOT OF PROPERTY LINE. BEARING TREES ARE BLAZED AND SCRIBED AT THE ROOT CROWN WITH DISTANCES MEASURED TO A NAIL AT THE SIDE CENTER OF THE TREE. THE BLAZED FACES OF THE BEARING TREES ARE PAINTED FLUORESCENT RED AND A LRT BEARING TREE TAG IS NAILED TO THE TREE. THIS SURVEY WAS PERFORMED IN THE FIELD MARCH THRU MAY 2015 BY GARY ANGIOLET, IGNACIO ROMAN, DAN SALLY AND KADEN McFARLAND ASSISTING ME USING A NIKON DTM 522 TOTAL STATION.

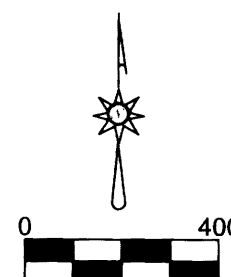


## CORNER DESCRIPTIONS:

- 1) THE CENTER 1/4 CORNER OF SECTION 23 GCDB 540340  
FOUND 1981 BLM ALUMINUM CAP 0.2 FEET ABOVE GROUND  
31" CEDAR BEARS N41 3/4"E 44.0 FEET (RECORD N42 1/2"E 43.56 FEET) HEALED FACE AND TAG.  
GRAND FIR METAL CAPPED STUMP AT S44"E IS DOWN AND UPROOTED WE DID NOT MEASURE TO.  
9" DOUGLAS FIR BEARS S13 1/4"W 9.55 FEET WE SCRIBE C1/4 S23 BT AND TAG TREE.  
11" DOUGLAS FIR BEARS S26 1/4"E 12.2 FEET WE SCRIBE C1/4 S23 BT AND TAG TREE.  
14" DOUGLAS FIR BEARS N8 1/4"W 7.0 FEET WE SCRIBE C1/4 S23 BT AND TAG TREE.  
CORNER LIES ON WEST FACING SLOPE.
- 2) THE CENTER - NORTH 1/16TH CORNER OF SECTION 23  
FOUND 1981 BLM ALUMINUM CAP IN TIPPED OVER ROOT WAD  
14" DOUGLAS FIR BEARS S83"E 7.2 FEET (RECORD S85 1/2"E 7.92 FEET) HEALED FACE AND TAG.  
15" DOUGLAS FIR BEARS N32 3/4"W 11.0 FEET (RECORD N33 1/2"W 11.22 FEET) HEALED FACE AND TAG.  
10" DOUGLAS FIR BEARS S14 3/4"E 9.8 FEET WE SCRIBE CN 1/16 S23 BT AND TAG TREE.  
CORNER LIES ON FLAT GROUND APPROX. 30 FEET SOUTH OF PROPOSED NEW ROAD LOCATION.
- 3) THE NORTHWEST 1/16TH CORNER OF SECTION 23  
FOUND 1981 BLM BRASS CAP 0.3 FEET ABOVE GROUND.  
13" DOUGLAS FIR BEARS N56"E 25.8 FEET (RECORD N56 1/2"E 25.74 FEET) HEALED FACE AND TAG.  
21" DOUGLAS FIR BEARS S60 3/4"W 14.3 FEET (RECORD S60"W 14.85 FEET) HEALED FACE AND TAG.  
CORNER LIES ON TOP OF SMALL RIDGETOP.
- 4) THE CNNW 1/64 CORNER OF SECTION 23  
SET 5/8" X 40" IRON ROD 36" IN THE GROUND WITH YELLOW PLASTIC CAP MARKED LONE ROCK TIMBER PLS2291  
12" DOUGLAS FIR BEARS N6 1/2"E 23.7 FEET WE SCRIBE BT AND TAG TREE.  
12" DOUGLAS FIR BEARS S63"W 8.5 FEET WE SCRIBE BT AND TAG TREE.  
CORNER LIES ON WEST EDGE OF RIDGETOP APPROX 100 FEET WEST OF THE END OF BLM ROAD # 29-7-13.0.  
PUT 6 FOOT METAL U-POST APPROX. 1.0 FEET WEST OF CORNER.
- 5) THE WEST 1/16 CORNER OF SECTION 23 ONLY  
FOUND 1981 BLM BRASS CAP 0.2 FEET ABOVE GROUND  
8" DOUGLAS FIR BEARS S25 3/4"E 29.7 FEET (RECORD S25 1/4"E 29.7 FEET) WELL HEALED FACE AND TAG.  
17" DOUGLAS FIR BEARS S27 1/2"W 21.4 FEET (RECORD S27"W 21.78 FEET) WELL HEALED FACE AND TAG.  
CORNER LIES ON EAST SIDE OF DOWN LOG ON SOUTH-WEST SLOPE.
- 6) THE 1/16 80 CORNER OF SECTION 23 ONLY  
FOUND 1981 BLM BRASS CAP 0.1 FEET ABOVE GROUND  
14" DOUGLAS FIR BEARS S68 3/4"E 21.6 FEET (RECORD S68"E 21.78 FEET) WELL HEALED FACE AND TAG.  
13" CEDAR BEARS S51"W 6.7 FEET (RECORD S50 1/2"W 6.93 FEET) WELL HEALED FACE AND TAG.  
CORNER LIES ON RIDGETOP THAT SLOPES TO THE SOUTHWEST.
- 7) THE NN 1/64 80 CORNER OF SECTION 23  
SET 5/8" X 40" IRON ROD 36" IN THE GROUND WITH YELLOW PLASTIC CAP MARKED LONE ROCK TIMBER PLS2291  
18" DOUGLAS FIR BEARS N2 3/4"W 8.7 FEET WE SCRIBE BT AND TAG TREE.  
18" DOUGLAS FIR BEARS S65"E 14.6 FEET WE SCRIBE BT AND TAG TREE.  
CORNER LIES APPROX. 50 FEET WEST OF OVERGROWN TRENCHED DIRT ROAD  
PUT 6 FOOT METAL U-POST APPROX. 1.0 FEET SOUTH OF CORNER.
- 8) THE NORTH 1/16 80 CORNER OF SECTION 23  
SET 5/8" X 40" IRON ROD 34" IN THE GROUND WITH A 2 1/2" ALUMINUM CAP MARKED LONE ROCK TIMBER  
N 1/16 80 S23 2015 PLS2291  
13" DOUGLAS FIR BEARS N61 1/4"W 20.3 FEET WE SCRIBE N1/16 80 S23 BT AND TAG TREE.  
12" WHITE FIR BEARS N69 3/4"E 7.9 FEET WE SCRIBE N1/16 80 S23 BT AND TAG TREE.  
CORNER LIES ON FLAT BENCH IN MIXED STAND OF YOUNG TIMBER.
- 9) THE NORTH 1/16 CORNER OF SECTION 23 ONLY  
FOUND 1981 BLM BRASS CAP 0.2 FEET ABOVE GROUND  
11" DOUGLAS FIR BEARS N81"E 73.6 FEET (RECORD N82"E 7.26 FEET 11LINKS TAG ON BT READS 111 LINKS 73.26 FEET)  
WELL HEALED FACE AND TAG.  
18" WHITE FIR BEARS S28 1/4"E 47.3 FEET (RECORD S29"E 47.52 FEET) WELL HEALED FACE AND TAG.  
CORNER LIES ON WEST FACING SLOPE, WITH OLD BLM BLAZES RUNNING NORTH - SOUTH FROM CORNER
- 10) THE CENTER 1/16 80 CORNER OF SECTION 23  
FOUND 1981 BLM ALUMINUM CAP 0.2 FEET ABOVE GROUND  
25" CEDAR BEARS N85 3/4"E 4.9 FEET (RECORD S89 1/2"E 5.28 FEET) WELL HEALED FACE AND TAG.  
16" DOUGLAS FIR BEARS N71"W 19.8 FEET (RECORD N71"W 19.80 FEET) WELL HEALED FACE AND TAG.  
CORNER LIES ON STEEP NORTHWEST SLOPE.
- 11) THE CENTER-WEST 1/16 CORNER OF SECTION 23  
FOUND 1981 BLM BRASS CAP AT GROUND LEVEL.  
24" DOUGLAS FIR BEARS N67 3/4"W 29.7 FEET (RECORD N68"W 29.70 FEET) WELL HEALED FACE AND TAG.  
28" DOUGLAS FIR BEARS N86 3/4"W 7.3 FEET (RECORD S89 1/2"W 7.59 FEET) WELL HEALED FACE AND TAG.  
CORNER LIES ON STEEP NORTH SLOPE.

LEGEND	
	SET 2 1/2" ALUMINUM CAP AS DESCRIBED IN CORNER DESCRIPTIONS
	SET IRON ROD WITH YELLOW PLASTIC CAP
	FOUND 1981 BLM CAP PER BLM PLAT 5853 FILED IN DOUGLAS COUNTY SURVEYORS OFFICE
	BLM PLAT 5853 FILED IN DOUGLAS COUNTY SURVEYORS OFFICE
	BOUNDARY LINES BLAZED, PAINTED, & TAGGED DURING THE COURSE OF THIS SURVEY
	BOUNDARY LINES POSTED WITH 5 1/2" METAL POSTS, BLAZED, & PAINTED

REGISTERED  
PROFESSIONAL  
LAND SURVEYOR  
*Ken W. Hoffine*  
OREGON  
JULY 16, 1987  
KEN W. HOFFINE  
PLS 2291  
EXPIRES: 6/30/2017



MAP FILE M169-56

MAP FILE M169-56