

RECORD OF SURVEY

LOCATED IN

THE SOUTH 1/2 OF SECTION 14, T.25S.,
R.4W., W.M. DOUGLAS COUNTY, OREGON

FOR: LONE ROCK TIMBER COMPANY
P.O. BOX 1127 ROSEBURG, OREGON 97470
BY: LONE ROCK TIMBER MANAGEMENT COMPANY
P.O. BOX 1127 ROSEBURG, OREGON 97470
TRACT: MT SCOTT 8 DATE: JUNE 5, 2015

FILED

Date: 7-8-2015 By: JC
This survey consists of:
Map: M169-52
Narrative:
Corner Rpt:

DOUGLAS COUNTY
SURVEYOR

CORNER DESCRIPTIONS:

1) 1/4 S15/S14 GCDB 500440
FOUND A 5/8" IRON ROD BY NEIL HIBBS IN 2002 PER M141-15, FIRMLY SET, PROJECTING 2" ABOVE THE GROUND, AT THE BASE OF A 6" TREATED FENCE POST, THE FACE OF WHICH BEARS S.45°W., 0.20 FT. EXISTING FENCE LINES N & E, AND NEWER FENCE LINE RUNS WEST FROM THE CORNER. THE ORIGINAL 8" ANCIENT FENCE CORNER NOTED IN M141-15 IS LYING BESIDE THE CORNER.

FROM WHICH THE REMAINS OF THE ORIGINAL BEARING TREE:
- THE CENTER OF AN OAK CLUSTER BEARS RECORD N.54 3/4°W., 106.6 FT (N.55°W., 164 LKS) AND BEARING TREES BY HIBBS:
- A 10" W.OAK BEARS RECORD N.61°W., 59.9 FT W/ HEALED SINGLE BLAZE
- A 13"x11" DOUBLE CEDAR BEARS RECORD S.3°E., 37.0 FT W/ HEALED SINGLE BLAZE

2) C 1/4 S14 GCDB 540440
COMPUTED POSITION, NO MONUMENT SET
FROM THIS POSITION:

- A 5/8" IRON ROD PER M128-80 BEARS S.1°05'36"E., 80.68 FT
- A 3/4" IRON PIPE PER M12-23 BEARS N.29°10'09"E., 54.22 FT
- A 1/2" IRON PIPE PER M12-23 BEARS N.19°30'58"E., 485.07 FT
- A 8" MAG-HUB SPIKE CONTROL POINT BEARS N.63°23'02"E., 12.30 FT

3) 1/4 S14/S13 GCDB 600440

FOUND A 2 1/2" USBLM STANDARD BRASS CAPPED IRON POST, BY ZIRPEL, CORBIN, & ROSEBERRY IN 1957 & ACCESSORIES BY KRIS DEGROOT IN 2004 PER M146-4. THE MONUMENT IS LEANING NORTHWESTERLY TOWARDS THE CREEK, AND IS HORIZONTALLY STABLE, BUT IT MOVES VERTICALLY. THE FLANGES OF THE MONUMENT ARE VISIBLE BENEATH THE UNDERMINED CREEK BANK. TO PRESERVE THE M146-4 POSITION, I TIE THE REFERENCE MONUMENTS AND COMPUTE THE CORNER POSITION BY HOLDING THE RECORD ANGLE, AND SCALING THE DISTANCES.

FROM THIS POSITION:
- A 5/8" IRON ROD BEARS N.60°07'53"E., 14.995 FT (N.60°11'02"E., 15.00 FT)
- A 5/8" IRON ROD BEARS S.11°28'46"W., 34.989 FT (S.11°31'56"W., 35.00 FT)
- THE BCIP BEARS N.10°31'42"E., 0.062 FT

4) S 1/16 S14/S13 GCDB 600420

SET A 5/8" x 40" IRON ROD, 36" IN THE GROUND, W/ 2 1/2" ALUM CAP MKD "LONE ROCK TIMBER T25S R4W S 1/16 S14/S13 2015 PLS 2291"

FROM WHICH NEW BEARING TREES:
- A 14" D.FIR BEARS S.88 1/2°E., 18.8 FT SCRIBED "S 1/16 S13 BT"
- A 15" D.FIR BEARS N.28 1/4°W., 13.0 FT SCRIBED "S 1/16 S14 BT"

5) CS 1/16 S14 GCDB 540420

SET A 5/8" x 40" IRON ROD, 36" IN THE GROUND, W/ 2 1/2" ALUM CAP MKD "LONE ROCK TIMBER T25S R4W S 1/16 C-C S14 2015 PLS 2291"

FROM WHICH NEW BEARING TREES:
- A 10" D.FIR BEARS N.68 1/2°E., 50.1 FT SCRIBED "CS 1/16 S14 BT"
- A 13" D.FIR BEARS S.2°W., 15.7 FT SCRIBED "CS 1/16 S14 BT"
AND A REFERENCE MONUMENT PER M128-80:
- A 5/8" IRON ROD BEARS S.1°05'36"E., 70.43 FT

6) 1/4 S14/S23 GCDB 540400

FOUND THE 1957 USBLM BCIP & ACCESSORIES PER THE 2012 USBLM RETRACEMENT SURVEY (DCSO BLM PLAT 2012-1, T25-4 AND VOL. 58 PG. 22910)

7) S13/S14/S23/S24 GCDB 600400

FOUND THE 1957 USBLM BCIP & ACCESSORIES PER THE 2012 USBLM RETRACEMENT SURVEY (DCSO BLM PLAT 2012-1, T25-4 AND VOL. 58 PG. 22910)

COORDINATE SYSTEM

NAME: LRT MT SCOTT 8
REFERENCE DATUM: NAD 83 (2011) EPOCH 2010.00
PROJECTION: TRANSVERSE MERCATOR (TM)
LATITUDE OF ORIGIN: 43°22'00" N
CENTRAL MERIDIAN: 123°08'00" W
ZONE WIDTH: 2°00'00"
ORIGIN SCALE FACTOR: 1.000 055
FALSE NORTHING: 50000.00 fti
FALSE EASTING: 150000.00 fti

GEODETIC COORDINATES

NAD 83 (2011) EPOCH 2010.00

STATION	LAT.	LONG.
RSBG	43°14'06.04984" N	123°21'33.72789" W
YONC	43°38'02.78725" N	123°17'53.82392" W
500440	43°23'44.44436" N	123°08'52.63123" W
540400	43°23'16.28887" N	123°08'15.36045" W
540420	43°23'30.01756" N	123°08'15.72689" W
540440	43°23'43.74616" N	123°08'16.08717" W
600400	43°23'16.08101" N	123°07'39.48408" W
600420	43°23'29.57447" N	123°07'40.11706" W
600440	43°23'43.06792" N	123°07'40.75012" W



0 400'
SCALE: 1" = 400'

LEGEND

- FOUND USBLM BCIP AS NOTED
- FOUND 5/8" IRON ROD PER M128-80
- FOUND 5/8" IRON ROD PER M141-15
- SET 5/8" X 40" IRON ROD WITH 2 1/2" ALUMINUM CAP MARKED AS NOTED
- COMPUTED POINT - NO MONUMENT SET
- BOUNDARY LINE POSTED WITH 5 1/2" STEEL POSTS, BLAZED, PAINTED, AND TAGGED
- EXISTING 25 - 4 - 13.0 ROAD
- LRT LONE ROCK TIMBER COMPANY
- (1) CORNER DESCRIPTION NO.
- (R1) 1957 USBLM DEPENDENT RESURVEY BY ZIRPEL, CORBIN, AND ROSEBERRY (DCSO VOL. 29 PG. 12274, 12286-87)
- (R2) 1983 USBLM DEPENDENT RESURVEY BY ROGERS & BISHOP (DCSO VOL. 46 PG. 17769-70)
- (R3) 1998 SURVEY BY GREG LANG - M128-80
- (R4) 2012 USBLM DEPENDENT RESURVEY BY KENNETH SAVELAND (DCSO BLM PLAT 2012-1, T25-4 AND VOL. 58 PG. 22910)

NARRATIVE:

THE PURPOSE OF THIS SURVEY IS TO MARK PROPERTY LINES OF LONE ROCK TIMBER FOR TIMBER MANAGEMENT PURPOSES. IN THE COURSE OF THE SURVEY WE SUBDIVIDED SECTION 14, MONUMENTED THE CS 1/16 CORNER AND THE SOUTH 1/16 CORNER OF SECTIONS 13 & 14. WE THEN MARKED THE NORTH, WEST, AND A NORTHERLY PORTION OF THE EAST BOUNDARY OF LONE ROCK TIMBER CO. PROPERTY IN THE S 1/2 OF THE SE 1/4. THE SOUTH LINE WAS POSTED & BLAZED UNDER THE 2012 BLM RETRACEMENT SURVEY BY KENNETH SAVELAND.

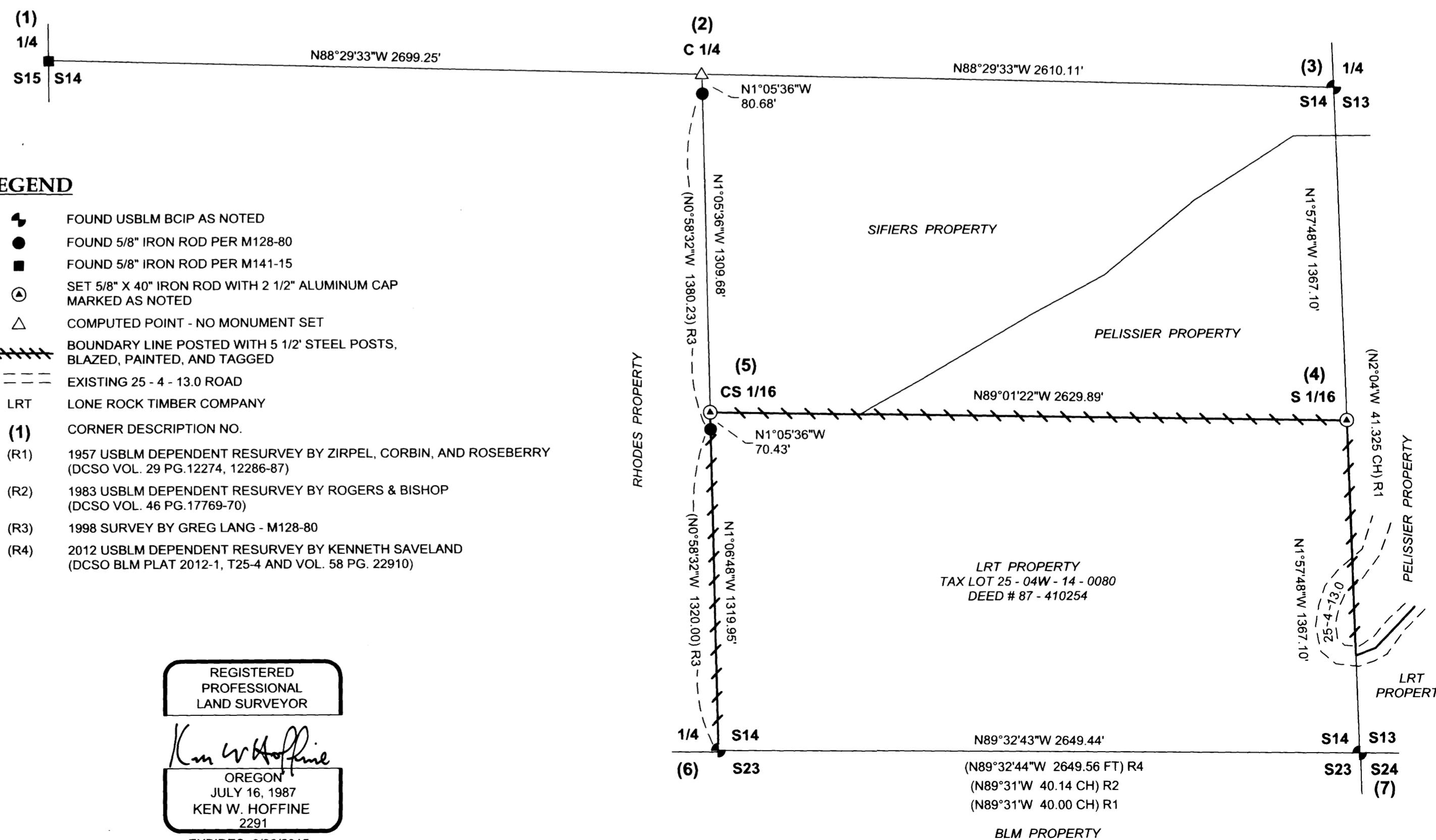
IN 1855 THE NORTH & WEST BOUNDARIES OF SECTION 14 WERE ORIGINALLY SURVEYED BY GORDON & GARDNER. THE SOUTH & EAST BOUNDARIES OF THE REGULAR SECTION WERE COMPLETED BY W.H. BYARS IN 1871. IN 1957 THE SOUTH & EAST BOUNDARIES WERE RETRACED BY BLM DEPENDENT RESURVEY BY ZIRPEL, CORBIN, & ROSEBERRY, WHICH: 1) RE-MONUMENTED THE 1956 DCSO PERPETUATION OF THE ORIGINAL SOUTH 1/4 CORNER OF 14 & 23, 2) ACCEPTED AND MONUMENTED THE LOCALLY PERPETUATED SECTION CORNER OF 13, 14, 23, & 24, 3) ACCEPTED AND MONUMENTED THE 1929 PERPETUATION BY B. IRVING OF THE SECTION CORNER OF 11, 12, 13, & 14, AND THE 1/4 CORNER OF 11 & 14, 4) SET BY PROPORTION THE 1/4 CORNER OF 13 & 14. IN 1998 THE N-S CENTERLINE OF SECTION 14 WAS SURVEYED BY GREG LANG PER M 128-80, WHICH SET REFERENCE MONUMENTS ON-LINE NEAR THE C 1/4 AND CS 1/16. IN 2002 THE 1/4 CORNER OF 14 & 15 WAS MONUMENTED FROM ORIGINAL EVIDENCE BY NEIL HIBBS PER M 141-15.

I ACCEPT THESE CORNERS AND SUBDIVIDE THE SECTION ACCORDING TO THE 2009 BLM MANUAL OF SURVEYING INSTRUCTION AS FOLLOWS: THE S 1/16 CORNER OF 13 & 14 IS COMPUTED BY SINGLE PROPORTION; I PROJECT FROM THE LANG SURVEY M 128-80 THE N-S CENTERLINE REFERENCE MONUMENTS NORTH AND INTERSECT THE E-W CENTERLINE TO COMPUTE THE C 1/4 CORNER. THE CS 1/16 CORNER IS COMPUTED BY SINGLE PROPORTION MID-POINT BETWEEN THE C 1/4 AND SOUTH 1/4 CORNER, AND PROJECTING THE E-W CENTERLINE OF THE SE QUARTER WEST TO INTERSECT THE LANG SURVEY M 128-80 MONUMENTED N-S LINE.

A STATIC GPS SURVEY NETWORK WAS OBSERVED TO PROJECT CONTROL POINTS UTILIZING TWO LEICA GX1230 RECEIVERS WITH LEICA AX1202 ANTENNAS, AND TWO TRIMBLE 4400 RECEIVERS WITH TRIMBLE ZEPHYR ANTENNAS. ODOT CORS STATIONS "RSBG" & "YONC" WERE HELD FIXED IN THEIR NAD 83 (2011) EPOCH 2010.00 PUBLISHED COORDINATES. THE GPS NETWORK WAS PROCESSED AND ADJUSTED BY THE METHOD OF LEAST-SQUARES IN LEICA GEO OFFICE (LGO). THE RESULTING GEODETIC COORDINATES WERE PROJECTED INTO A LOCAL TRANSVERSE MERCATOR PROJECTION, WHICH WAS SCALED TO AN AVERAGE PROJECT ELEVATION. THE E 1/4 CORNER, W 1/4 CORNER, AND SE SECTION CORNER WERE TIED DIRECTLY FROM GPS CONTROL POINTS. THE MONUMENTS NEAR THE C 1/4 CORNER WERE INCORPORATED INTO A SHORT CLOSED LOOP TRAVERSE FROM GPS CONTROL TO THE NORTH. TRAVERSES WERE RUN FROM GPS CONTROL POINTS EAST OF THE SE SECTION CORNER AND EAST OF THE CS 1/16 CORNER ALONG ALL LINES POSTED. THE GPS CONTROL POINTS WERE HELD FIXED, AND THE TRAVERSE NETWORK WAS ADJUSTED IN LGO BY THE METHOD OF LEAST-SQUARES. ALL TERRESTRIAL SURVEY OBSERVATIONS WERE MADE WITH A LEICA TCRP1203 TOTAL STATION.

THE BOUNDARY LINES AS SHOWN ON THE FACE OF THE MAP WERE POSTED WITH 5 1/2" STEEL POSTS, WITH BLUE AND RED PROPERTY LINE FLAGGING. TREES ALONG THE BOUNDARY WERE 1/4 BLAZED AND PAINTED, AND LRT PROPERTY LINE TAGS HUNG BETWEEN POSTS. ALL NEW BEARING TREES ARE SINGLE BLAZED WITH A BRASS WASHER STAMPED "PLS 2291" NAILED INTO THE BOTTOM OF THE BLAZE. BEARING ARE TAKEN TO THE CENTER OF THE ROOT CROWN AND DISTANCES ARE MEASURED TO A NAIL AT THE SIDE CENTER OF THE TREE. THE BLAZED FACES ARE PAINTED, AND A LRT BEARING TREE TAG NAILED TO THE TREE.

THIS SURVEY WAS PERFORMED IN THE FIELD BY ADAM DEGROOT, DAN SAILY, NACHO ROMAN, AND KADEN MCFARLAND, WITH COMPUTATIONS AND DRAFTING BY ADAM DEGROOT & GARY ANGIOLET.



MAP FILE M169-52

MAP FILE M169-52