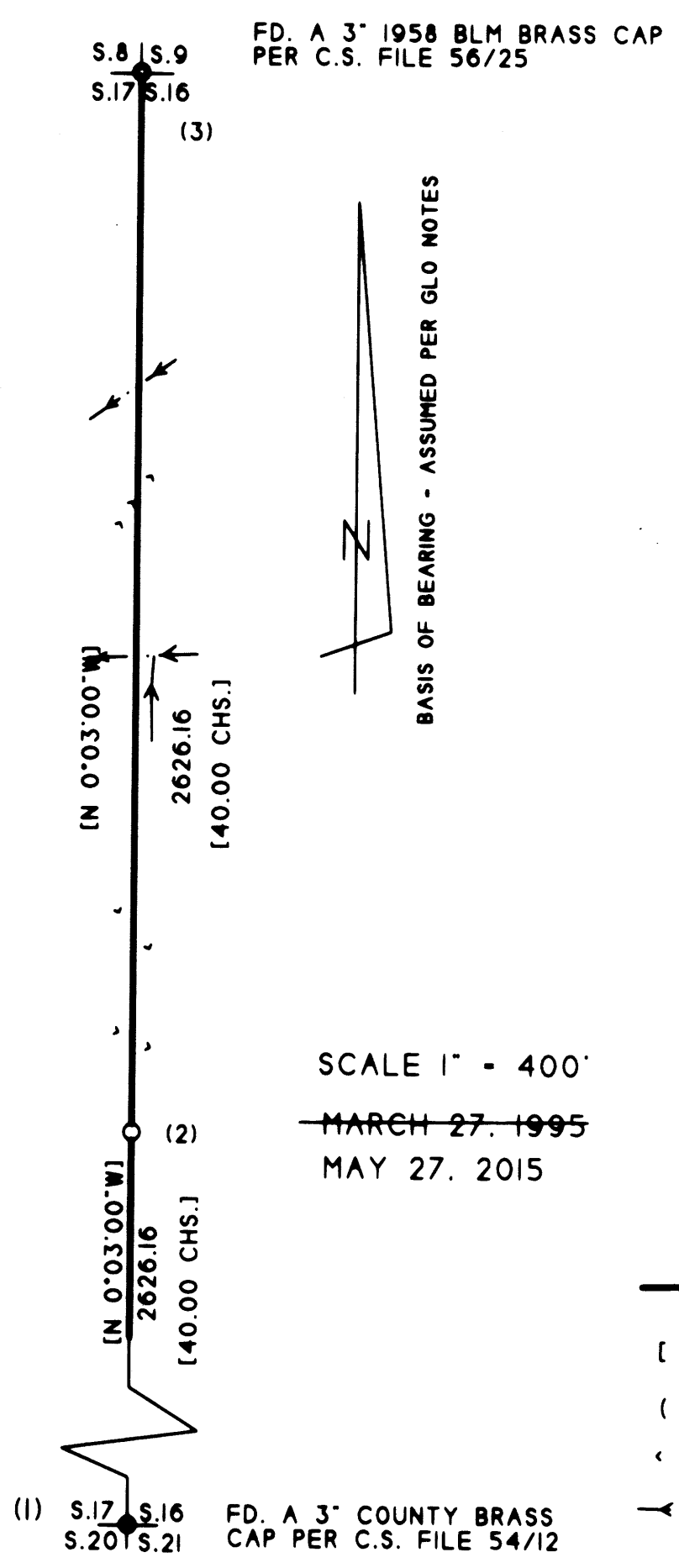


FILED
 Date: 7-2-2016 By: X
 This survey consists of:
 Map: M169-50
 Narrative: _____
 Corner Rpt: _____

DOUGLAS COUNTY
 SURVEYOR

MAP FILE M169-50

BOUNDARY LINE SURVEY LOCATED IN
 SECTION 16, T.23 S., R.8 W., W.M., DOUGLAS CO., OR.



BASIS OF BEARING - ASSUMED PER GLO NOTES

SCALE 1" = 400'
~~MARCH 27, 1995~~
 MAY 27, 2015

SURVEY FOR:
 IP TIMBERLANDS OPERATING CO., LTD.
 711 PORTDOCK ROAD
 REEDSPORT, OR. 97467

SURVEY BY:
 CLYDE F. MULKINS
 TIMBER CRUISING & ENGINEERING
 P.O. BOX 750
 COOS BAY, OR. 97420



~~EXPIRES 12-31-06~~
 RENEWAL 12/31/2016

- LEGEND
- ⊙ FD. CORNER AS SHOWN
 - SET A 3 1/4" I.P.T.O. ALUM. CAP (MAG. INSERT) ON A 3/4" X 36" ALUM. ROD
 - LINE BLAZED AND FLAGGED
 - [] GLO DISTANCES & BEARINGS
 - () CORNER REF. NO.
 - <<< RIDGES
 - ← CREEK / DRAW

CORNER NOTES

CORNER #1: FD. A 3" 1966 COUNTY BRASS CAP AT THE CORNER OF SECTIONS 16, 17, 20, AND 21 FROM WHICH: FD. A 60" DF STUMP WITH OPENED FACE BEARS S24°W, 21.8 FT.; FD. A 50" DF STUMP WITH SCAR BEARS N18°W, 52.1 FT.; FD. A 17" HEMLOCK STUMP WITH VISIBLE SCRIBES BEARS S21°E, 19.4 FT.; FD. A 28" HEMLOCK STUMP WITH SCRIBES BEARS N61°E, 19.1 FT.; FD. A 20" HEMLOCK STUMP WITH SCRIBES BEARS N37 1/2°W, 22.2 FT.; FD. A 14" HEMLOCK STUMP WITH SCRIBES BEARS S59°W, 14.9 FT.. CORNER FALLS 30 FT. NORTH OF PAVED RIDGE TOP ROAD.

CORNER #2: SET AN I.P.T.O. ALUM. MONUMENT AT THE 1/4 CORNER BETWEEN SECTIONS 16 AND 17 FROM WHICH: I SCRIBED 1/4 S17 BT ON A 15" DF BEARS N50°W, 10.5 FT.; I SCRIBED 1/4 S17 BT ON A 16" DF BEARS NORTH, 39.0 FT.; I SCRIBED 1/4 S16 BT ON A 14" DF BEARS S81°E, 9.8 FT.; I SCRIBED 1/4 S16 BT ON A 13" DF BEARS S19°E, 11.7 FT.

CORNER #3: FD. A 3" 1958 BLM BRASS CAP AT THE CORNER OF SECTIONS 8, 9, 16, AND 17 FROM WHICH: FD. AN 18" DF WITH A HEALED FACE BEARS N42°W, 19.7 FT.; FD. A 13" DF WITH A HEALED FACE BEARS N50°E, 11.3 FT.; FD. A 14" HEMLOCK WITH A HEALED FACE BEARS S74°E, 18.4 FT.; FD. A 10" DF WITH A HEALED FACE BEARS S3°W, 15.2 FT.; FD. 50" DF SNAG WITH VISIBLE SCRIBES BEARS N12°E, 150.5 FT.; FD. 23" GF WITH A HEALED FACE BEARS S57 1/2°E, 195.4 FT.

NARRATIVE

THE PURPOSE OF THIS SURVEY WAS TO RE-ESTABLISH THE COMMON 1/4 CORNER OF SECTIONS 16 AND 17. RECORD SURVEYS USED FOR THIS SURVEY, SHOWING THE PERPETUATED SECTION CORNERS, ARE CS FILE 54/12 AND CS FILE 56/25. THE 1/4 CORNER WAS RE-ESTABLISHED BY PROPORTION MEASUREMENT. THE BLM RAN AN UNRECORDED STAFF COMPASS SURVEY OF THIS LINE IN THE 1970'S AND SET A STEEL FENCE POST WHICH BEARS S58°27'W 5.33 FEET. SOME STEEL FENCE POSTS WERE SET ALONG THE STAFF COMPASS LINE BY THE BLM. NO BEARING TREES WERE FOUND REFERENCING THE BLM STEEL FENCE POST AT THEIR 1/4 CORNER POSITION.

THE CONTROL TRAVERSE WAS A CLOSED LOOP TRAVERSE WITH 4 SECONDS ANGULAR ERROR PER SETUP. THE ADJUSTED LINEAR ERROR WAS 0.23 FEET. ASSISTING ME WITH THIS SURVEY WERE TROY RAMBO, RANDY MADDEN, AND FLOYD VANDERVELDEN. THE FIELD WORK WAS PERFORMED BETWEEN MARCH 3 AND MARCH 10, 1995. THE FIELD TRAVERSE WAS PERFORMED USING A TOPCON GTS-301 TOTAL STATION.

NARRATIVE ADDENDUM

THIS SURVEY WAS MADE AS STATED ABOVE IN 1995 UNDER A CONTRACT WITH IP TIMBERLANDS OPERATING COMPANY, LTD. AFTER A BLM CADASTRAL SURVEYOR CONTACTED OUR OFFICE WITH REGARDS TO THIS SURVEY I DISCOVERED THE SURVEY WAS NEVER RECORDED WITH THE DOUGLAS COUNTY SURVEYOR'S OFFICE, AS WAS OUR INTENT AND AGREEMENT. THIS MAP IS A REDRAWING OF THE ORIGINAL MAP FOR RECORDING.

MAP FILE M169-50