

**SURVEY FOR: STATE OF OREGON – DEPARTMENT OF FORESTRY,
LOCATED IN THE NW1/4 OF SECTION 16, TOWNSHIP 22 SOUTH, RANGE 11 WEST, W.M., DOUGLAS COUNTY OREGON**

CONTRACT: HAKKI SURVEY, CONTRACT #ODF-1989-14

SURVEY BY: ESTABROOK LAND SURVEYING INC.
PO BOX 574, LAKESIDE, OR 97449

SURVEY PARTY: JERRY ESTABROOK – PARTY CHIEF / INSTRUMENT MAN
JOSH MAXWELL – CHAIN MAN / BRUSHER
PAT COY – CHAIN MAN / BRUSHER

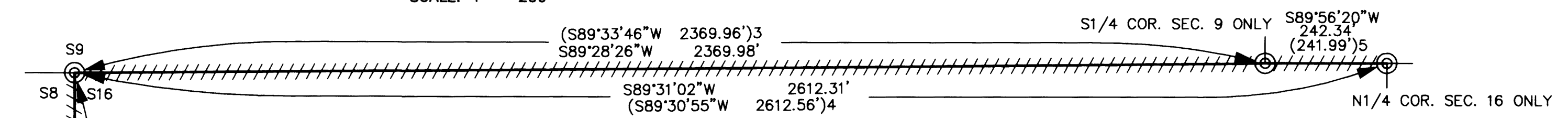
DATE OF COMPLETION: JANUARY 2015

SCALE: 1" = 200'

FILED
Date: 2-17-2015 By: JLE
This survey consists of:
Map: M169-4
Narrative: _____
Corner Rpt: _____

**DOUGLAS COUNTY
SURVEYOR**

MAP FILE M169-4



NW COR. SEC. 16
FOUND MONUMENT:
A 1 1/2" IRON PIPE WITH 2" BRASS CAP
MARKED "T22S R11W S9 S8 S16 2004 LS2869" PER M145-62
FOUND BT'S:
A 20" ALDER WITH BARK SCRIBE AND YMLP BEARS N63°E 21.6'.
A 16" ORIGINAL, NOW ROTTEN FIR SNAG WITH CHOP MARK IN FACE BEARS S52°W 4.0'.
A 45" ROTTEN FIR STUMP WITH NO VISIBLE MARKS BEARS S69°W 15.7'.
A 43" MAPLE WITH POSSIBLE BARK SCRIBE AND YMLP BEARS S79°W 94.7'.
A 49" ROTTEN FIR STUMP WITH TAG ON TOP BEARS N12°W 35.6'.
FOUND BO:
A ROCK FACE WITH OX MARK BEARS S57°E 1.2'.
NEW BO SET:
AN ORANGE CARSONITE POST SET ALONGSIDE MONUMENT.
LAT. AND LONG. PER GARMEN ETREX HAND HELD GPS:
N: 43°39'53.1" W: 124°01'42.9"

S1/4 COR. SEC. 9 ONLY
FOUND MONUMENT:
A 1 1/2" X 36" IRON PIPE WITH 3" BRASS CAP MARKED
"T22S R11W 1/4 S9 1975" PER CS#58/56, LAYING ON TOP OF GROUND.
RESET MONUMENT FROM FOUND BT'S.
FOUND BT'S:
A 15" ROTTEN FIR STUMP WITH NO VISIBLE MARKS BEARS N55°30'E 18.5'.
A 32" ROTTEN FIR STUMP WITH VISIBLE SCRIBE IN OPENED FACE BEARS N33°W 21.5'.
NEW BT'S MARKED:
A 10" FIR, FACE SCRIBED "S1/4 S9 BT" WITH MAG NAIL AND WASHER STAMPED "LS2703"
IN BOTTOM OF FACE AND WITH X-CHOP AND YMLP AT BREAST HEIGHT BEARS N28°E 10.25'
TO A SPIKE AT SIDE CENTER.
A 10" FIR, FACE SCRIBED "S1/4 S9 BT" WITH MAG NAIL AND WASHER STAMPED "LS2703"
IN BOTTOM OF FACE AND WITH X-CHOP AND YMLP AT BREAST HEIGHT BEARS N26°W 13.53'
TO A SPIKE AT SIDE CENTER.
NEW BO'S SET:
AN ORANGE CARSONITE POST BEARS NORTH 2.0'.
AN ORANGE CARSONITE POST BEARS WEST 2.0'.
LAT. AND LONG. PER GARMEN ETREX HAND HELD GPS:
N: 43°39'53.8" W: 124°01'10.7"

NW1/4 SECTION 16

CLOSING CORNER SEC. 8 & SEC. 17
FOUND MONUMENT:
A 1 1/2" IRON PIPE WITH 3" BRASS CAP MARKED
"T22S CC S8 S17 S16 R11W 1968 RS359" PER CS#55/101-8
FOUND BT'S:
A 30" FIR WITH HEALED FACE AND YMLP BEARS S52°E 45.3'.
A 46" ORIGINAL FIR, NOW A STUMP WITH YMLP BEARS S33°E 43.1'.
A 48" ORIGINAL FIR, NOW A STUMP WITH YMLP BEARS S18°W 26.3'.
A 12" MAPLE WITH HEALED FACE AND YMLP BEARS S60°W 10.0'.
A 50" ORIGINAL FIR STUMP WITH YMLP BEARS N25°W 26.9'.
FOUND BO'S:
A ROCK OUTCROP MARKED "X BO" BEARS N41°E 4.0', THE
RECORD BEARING FOR THIS BO WAS N41°E PER CS#55/101-8
A STEEL FENCE POST BEARS SOUTH 0.5'.
NEW BO SET:
AN ORANGE CARSONITE POST EAST 3.2'.
LAT. AND LONG. PER GARMEN ETREX HAND HELD GPS:
N: 43°39'45.8" W: 124°01'43.4"

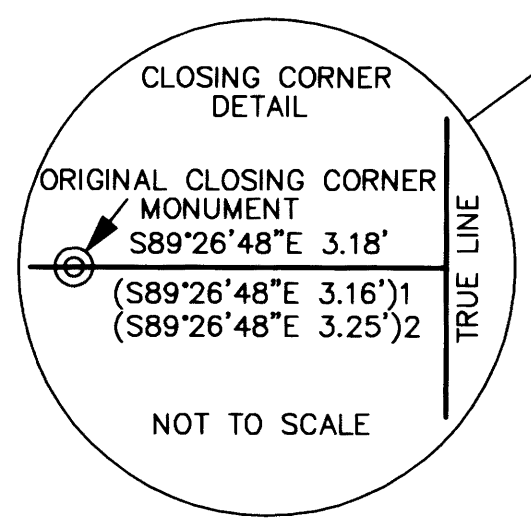
N1/4 COR. SEC. 16 ONLY
FOUND BT'S:
A 24" ROTTEN FIR STUMP WITH NO VISIBLE MARKS S66°E 29.0'. FOUND OLD YMLP ON
GROUND AND PLACED IT BACK ON BT.
A 26" ROTTEN FIR STUMP WITH VISIBLE SCRIBE IN OPENED FACE BEARS S51°W 37.2'.
MONUMENT SET:
A 5/8" X 30" IRON ROD WITH PLASTIC CAP MARKED "ESTABROOK LS2703".
NEW BT'S MARKED:
A 14" FIR, FACE SCRIBED "N1/4 S16 BT" WITH MAG NAIL AND WASHER STAMPED "LS2703"
AND WITH X-CHOP AND YMLP AT BREAST HEIGHT BEARS S75°E 6.10' TO A SPIKE AT SIDE CENTER.
AN 11" FIR, FACE SCRIBED "N1/4 S16 BT" WITH MAG NAIL AND WASHER STAMPED "LS2703"
AND WITH X-CHOP AND YMLP AT BREAST HEIGHT BEARS S54°W 5.85' TO A SPIKE AT SIDE CENTER.
NEW BO'S SET:
AN ORANGE CARSONITE POST BEARS SOUTH 2.0'.
AN ORANGE CARSONITE POST BEARS WEST 2.0'.
LAT. AND LONG. PER GARMEN ETREX HAND HELD GPS:
N: 43°39'54.0" W: 124°01'08.0"

NARRATIVE:
THE PURPOSE OF THIS SURVEY WAS TO MARK BOUNDARY LINES FOR RESOURCE MANAGEMENT.
THE PROCEDURE WAS TO TRAVERSE BETWEEN EXISTING CORNERS AND MARK BOUNDARY LINES
WITH ORANGE FLAGGING, ORANGE BLAZES AND AND ORANGE CARSONITE POST. ALL SURVEYING
AND BOUNDARY MARKING WAS PERFORMED IN ACCORDANCE WITH THE BLM MANUAL OF SURVEYING
INSTRUCTIONS.
EQUIPMENT USED WAS A TOPCON 312 TOTAL STATION WITH TDS RANGER DATA COLLECTOR.
ASSISTING PERSONNEL WERE JOSH MAXWELL AND PAT COY.

BASIS OF BEARING:
M51-28 IS BASED ON SOLAR, M145-62 IS BASED ON M51-28

RECORD REFERENCE INFORMATION:
DOUGLAS COUNTY RECORD SURVEYS M145-62, M51-28, M57-54 AND M42-26.

- LEGEND**
- ⊙ FOUND CORNER AS NOTED
 - ////// BOUNDARY LINE MARKED WITH ORANGE FLAGGING, ORANGE BLAZES AND ORANGE CARSONITE POST
 - YMLP YELLOW METAL LOCATION POSTER
 - BT BEARING TREE
 - BO BEARING OBJECT
 - CC CLOSING CORNER
 - () 1 RECORD PER M145-62
 - () 2 RECORD PER M51-28
 - () 3 RECORD PER M57-54
 - () 4 RECORD PER M42-26
 - () 5 RECORD PER CS 58/56



N1/16 COR. SEC. 17 ONLY
FOUND MONUMENT:
A 1 1/2" IRON PIPE WITH 2" BRASS CAP MARKED
"N1/16 S17 2004 LS2869" PER M145-62.
FOUND BT'S:
A 13" FIR WITH HEALED FACE AND YMLP BEARS N42°E 28.9'.
A 9" MAPLE WITH VISIBLE BARK SCRIBE AND YMLP BEARS S85°W 34.7'.
NEW BO SET:
AN ORANGE CARSONITE POST SET ALONGSIDE MONUMENT.
LAT. AND LONG. PER GARMEN ETREX HAND HELD GPS:
N: 43°39'36.6" W: 124°01'42.9"

**REGISTERED
PROFESSIONAL
LAND SURVEYOR**

Jerry Lee Estabrook

**OREGON
JUNE 30, 1995
JERRY LEE ESTABROOK
2703**

EXPIRES 12/31/15

DRAWN BY: JLE	DATE: 1/26/15
CHECKED BY: TJE	DRAWING NO.: HAKKI
JOB NO.: 2015-1	SHEET 1 OF 1

MAP FILE M169-4