

FILED
 Date: 3/11/2015 By: DWB
 This survey consists of:
 Map: M169-14
 Narrative:
 Corner Rpt:
 DOUGLAS COUNTY SURVEYOR

PROPERTY LINE SURVEY

IN THE
 NORTHEAST 1/4, SOUTHEAST 1/4 AND SOUTHWEST 1/4 OF SECTION 15, T23S, R7W, W.M.
 DOUGLAS COUNTY, OREGON
 DECEMBER 13, 2014

SCALE 1"=400'

1 1/4 CORNER 15 AND 16
 FOUND: 3 1/4" BUREAU OF LAND MANAGEMENT BRASS CAP "1957"
 MARKED: 6" FIR, N7E, 21.7'-SCRIBED "1/4S15 BT"
 8" FIR, S61E, 20.3'-SCRIBED "1/4S15 BT"
 8" FIR, S15W, 30.0'-SCRIBED "1/4S16 BT"
 6" FIR, N72W, 46.5'-SCRIBED "1/4S16 BT"
 CORNER MONUMENT FALLS IN DITCH ON WESTERLY SIDE OF GRAVEL ROAD

2 CENTER-WEST 1/16 CORNER
 FOUND: 1" X 1" "T" AND CAP IRON PER M22-4
 22" FIR, N56E, 33.2' TO CENTER (M22-4)
 MARKED: 18" FIR, S64E, 14.7' TO CENTER-SCRIBED "CW1/16S15 BT"

3 CENTER-EAST 1/16 CORNER
 FOUND: 1" X 1" "T" IRON AND CAP PER M22-4
 15" FIR, N26E, 13.2' TO CENTER (M22-4)
 19" FIR, N72E, 5.6' TO CENTER (M22-4)

4 SOUTHEAST 1/16 CORNER
 FOUND: 1" X 1" "T" IRON AND CAP PER M22-4
 35" FIR SNAG, N69E, 56.9' TO CENTER (M22-4)
 MARKED: 26" FIR, N69E, 56.9' TO CENTER-SCRIBED "SE1/16S15 BT"
 10" FIR, N28W, 25.8' TO CENTER-SCRIBED "SE1/16S15 BT"

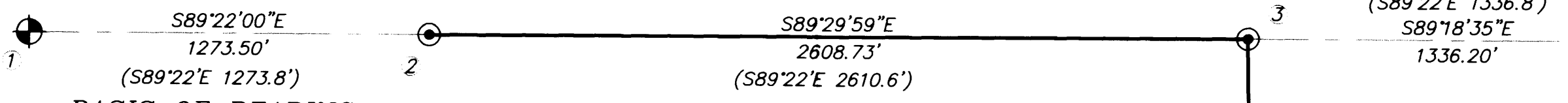
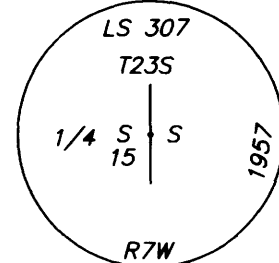
7 WEST 1/4 CORNER SECTION 14 ONLY
 FOUND: 1" X 1" "T" IRON AND CAP PER M13-64
 32" FIR, N20E, 21.6' TO CENTER (M13-64)
 30" FIR, S29W, 20.2' TO CENTER (M13-64)

8 EAST 1/4 CORNER SECTION 15 ONLY
 FOUND: 1" IRON PIPE WITH 3" BRASS CAP "LS 307"
 SET IN 1957 (MARKED AS SHOWN)
 MARKED: 20" FIR, S81W, 17.0' TO CENTER-SCRIBED "1/4S15 BT"
 9" MADRONE, N3W, 9' TO CENTER-SCRIBED "1/4S15 BT"

9 POINT ON LINE
 SET: 5/8" REBAR WITH YELLOW PLASTIC CAP MARKED
 "D.W. BAKER PLS 1978"

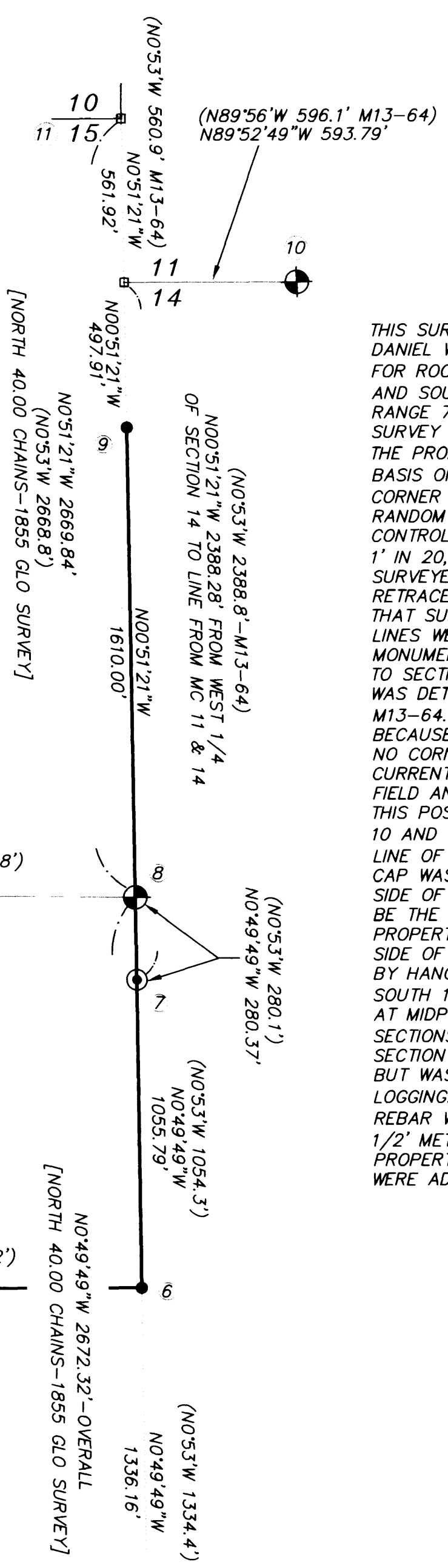
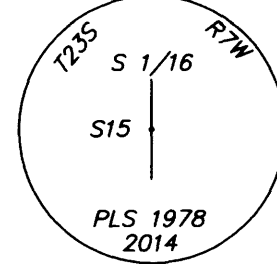
10 MEANDER CORNER 11 AND 14
 FOUND: 1" X 1" "T" IRON AND CAP PER M13-64

11 POSITION OF SECTION CORNER 10 & 15 ONLY
 FOUND: 48" FIR STUMP, S59'45"E, 223.60' PER M13-64
 NOTHING SET-CORNER FALLS IN PLOWED FIELD



5 SECTION CORNER 14, 15, 22 AND 23
 FOUND: 3 1/4" BUREAU OF LAND MANAGEMENT BRASS CAP "1962"
 FOUND: 15" BLACK OAK, N36E, 11.7'-1961 BLM BEARING TREE
 42" FIR, N48E, 20.8'-HAINES BEARING TREE
 34" FIR, S25E, 89.8'-1961 BLM BEARING TREE
 12" DOUBLE BLACK OAK, S68W, 85.6'-1961 BLM BEARING TREE
 16" FIR, N70W, 23.5'-1992 DOUGLAS COUNTY BEARING TREE
 NOTE: HAINES "T" IRON BEARS N57'25"E, 7.94' AND IRON PIPE WITH
 BRASS CAP MARKED "LS 307" IS ALONGSIDE BLM BRASS CAP

6 SOUTH 1/16 CORNER SECTION 15 ONLY
 SET: 5/8" X 30" REBAR WITH 2 1/2" ALUMINUM CAP
 (MARKED AS SHOWN)
 17" FIR, S71W, 37.5' TO CENTER-SCRIBED "S1/16S15 BT"
 27" FIR, N27W, 14.7' TO CENTER-SCRIBED "S1/16S15 BT"



-NARRATIVE-
 THIS SURVEY WAS MADE IN FEBRUARY AND SEPTEMBER, 2014 BY DANIEL W. BAKER OF BAKER AND ASSOCIATES SURVEYORS, INC. FOR ROCKING "C" RANCH IN THE NORTHEAST 1/4 SOUTHEAST 1/4 AND SOUTHWEST 1/4 OF SECTION 15, TOWNSHIP 23 SOUTH, RANGE 7 WEST, WILLAMETTE MERIDIAN. THE PURPOSE OF THIS SURVEY WAS TO LOCATE AND MARK IN THE FIELD, A PORTION OF THE PROPERTY LINE OF ROCKING "C" RANCH IN SECTION 15. THE BASIS OF BEARING FOR THIS SURVEY WAS BETWEEN THE WEST 1/4 CORNER AND THE CENTER-WEST 1/16 CORNER PER M22-4. RANDOM TRAVERSES WERE RUN BETWEEN FOUND CORNERS FOR CONTROL, WITH A MINIMUM ERROR OF CLOSURE OF GREATER THAN 1' IN 20,000', BEFORE ANGULAR ADJUSTMENT. THIS SECTION WAS SURVEYED AND SUBDIVIDED PER M22-4 AND THIS WAS A RETRACEMENT OF THAT SURVEY. THE CORNERS ESTABLISHED IN THAT SURVEY WERE HELD FOR CONTROL AND THE PROPERTY LINES WERE BLAZED AND PAINTED BETWEEN THE FOUND CORNER MONUMENTS. THE POSITION FOR THE SECTION CORNER COMMON TO SECTIONS 10 AND 15, TOWNSHIP 23 SOUTH, RANGE 7 WEST, WAS DETERMINED FROM THE 1958 SOUTHEAST BEARING TREE PER M13-64. THE "T" IRON SET IN M13-64 WAS NOT FOUND BECAUSE THE AREA WAS CLEARED BY THE CURRENT LANDOWNER. NO CORNER WAS SET AT THIS POSITION AT THE REQUEST OF THE CURRENT LANDOWNER, BECAUSE THE POSITION IS IN THE LARGE FIELD AND THIS POSITION FITS OTHER CORNERS SET IN M13-64. THIS POSITION FOR THE SECTION CORNER COMMON TO SECTIONS 10 AND 15 WAS USED TO CONTROL THIS NORTH 1/2 OF THE EAST LINE OF SECTION 15 AND A 5/8" X 30" REBAR WITH A YELLOW CAP WAS SET AS A POINT ON THE SECTION LINE ON THE SOUTH SIDE OF THE UMPQUA RIVER. THIS CORNER IS NOT INTENDED TO BE THE MEANDER CORNER BETWEEN SECTIONS 14 AND 15. THE PROPERTY LINES WERE MARKED BY BLAZING TREES ON EITHER SIDE OF THE TRUE PROPERTY LINE, BLAZES PAINTED ORANGE, AND BY HANGING ORANGE RIBBON ALONG THE PROPERTY LINE. THE SOUTH 1/16 CORNER ON THE EAST LINE OF SECTION 15 WAS SET AT MIDPOINT BETWEEN THE SECTION CORNER COMMON TO SECTIONS 14, 15, 22 AND 23 AND THE EAST 1/4 CORNER OF SECTION 15 ONLY. THIS CORNER WAS ESTABLISHED IN M22-4 BUT WAS NOTED ON THE SURVEY THAT IT WAS DESTROYED IN LOGGING. THE NEW CORNER WAS MONUMENTED WITH A 5/8" X 30" REBAR WITH A 2 1/2" ALUMINUM CAP, MARKED AS SHOWN. 5 1/2" METAL FENCE POSTS WERE SET BY ALL FOUND OR SET PROPERTY CORNERS IN THIS SURVEY AND NEW BEARING TREES WERE ADDED AS NEEDED.

REGISTERED
 PROFESSIONAL
 LAND SURVEYOR

 OREGON
 JULY 16, 1982
 DANIEL W. BAKER
 1978

EXPIRES 12/31/15

I CERTIFY THAT THIS MAP WAS PREPARED
 USING A HP51645A INK CARTRIDGE ON
 JPC-4M2 DOUBLE MATTE FILM

BASIS OF BEARING: A PORTION OF THE EAST-WEST CENTERLINE
 BETWEEN WEST 1/4 CORNER AND CENTER-WEST 1/16 CORNER PER M22-4

LEGEND

- PUBLIC LAND SURVEY CORNERS FOUND -AS NOTED
- CORNER FOUND - 1" X 1" "T" IRON PER M22-4 WITH 1" BRASS DISK MARKED LS 239
- CORNER SET - 5/8" X 30" REBAR WITH 2 1/2" ALUMINUM CAP MARKED AS SHOWN, UNLESS NOTED
- CALCULATED POINT (NOTHING FOUND OR SET)
- BLAZED AND PAINTED PROPERTY LINE
- RECORD DATA PER M22-4 OR AS NOTED
- RECORD DATA PER 1855 OR 1881 GLO SURVEY, AS NOTED

PROPERTY LINE SURVEY	
NORTHEAST 1/4, SOUTHEAST 1/4 AND SOUTHWEST 1/4 OF SECTION 15, T23S, R7W, W.M. DOUGLAS COUNTY, OREGON	
CLIENT:	ROCKING "C" RANCH
DRAWN BY:	DWB BAKER AND ASSOCIATES, SURVEYORS
DATE:	12/13/14 1347 MARKET STREET
FILE:	RCR-230715 SPRINGFIELD, OREGON 97477 (541) 343-7243