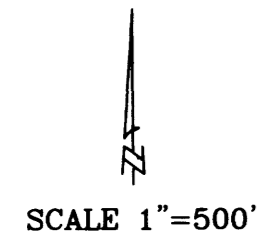


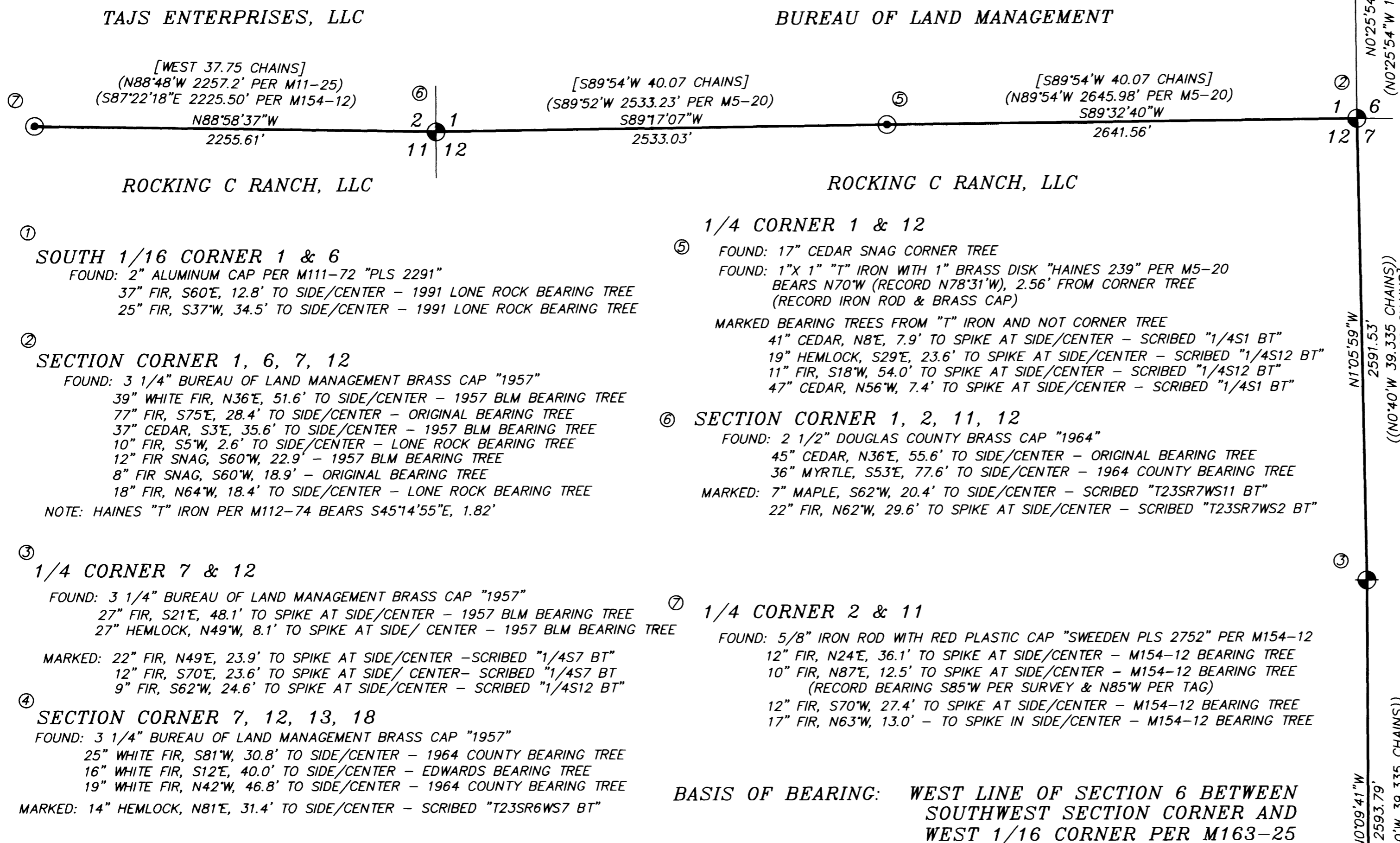
FILED  
Date: 3/11/2015 By: DWB  
This survey consists of:  
Map: M169-13  
Narrative:  
Corner Rpt: DOUGLAS COUNTY SURVEYOR

PROPERTY LINE SURVEY  
IN THE  
NORTHEAST 1/4, SOUTHEAST 1/4 & NORTHWEST 1/4 OF SECTION 12  
AND NORTHEAST 1/4 OF SECTION 11, T23S, R7W, W.M.  
DOUGLAS COUNTY, OREGON  
DECEMBER 15, 2014



-NARRATIVE-

THIS SURVEY WAS MADE IN MARCH, MAY AND DECEMBER 2014 BY DANIEL W. BAKER OF BAKER AND ASSOCIATES SURVEYORS, INC. FOR ROCKING C RANCH IN THE NORTHEAST 1/4 SOUTHEAST 1/4 AND NORTHWEST 1/4 OF SECTION 12 AND NORTHEAST 1/4 OF SECTION 11, TOWNSHIP 23 SOUTH, RANGE 7 WEST, WILLAMETTE MERIDIAN. THE PURPOSE OF THIS SURVEY WAS TO MARK IN THE FIELD THE NORTH AND EAST LINES OF SECTIONS 12 AND THE EAST 1/2 OF THE NORTH LINE OF SECTION 11 BETWEEN MONUMENTED GOVERNMENT CORNERS, AS NOTED. THE BASIS OF BEARING FOR THIS SURVEY WAS THE SOUTH 1/4 MILE OF THE SECTION LINE COMMON TO SECTION 6, T23S, R6W, W.M. AND SECTION 1, T23S, R7W, W.M. PER M 163-25. CLOSED TRAVERSE WERE RUN BETWEEN FOUND CORNERS FOR CONTROL, WITH A MINIMUM ERROR OF CLOSURE OF 1' IN 10,000', BEFORE ANGULAR ADJUSTMENT. THE CORNERS ON THE WEST LINE OF SECTION 7 WERE MONUMENTED WITH BUREAU OF LAND MANAGEMENT BRASS CAPS SET IN 1957. THE 1/4 CORNER COMMON TO SECTIONS 1 AND 12, T23S, R7W, W.M. WAS THE ORIGINAL CORNER POSITION AS PERPETUATED IN M5-20 WITH A "T" IRON AND 1" BRASS DISK MARKED "HAINES 239". THE SECTION CORNER COMMON TO SECTIONS 1, 2, 11 AND 12, T23S, R7W, W.M. WAS A DOUGLAS COUNTY BRASS SET IN 1964 TO PERPETUATE THE ORIGINAL CORNER POSITION. THE 1/4 CORNER COMMON TO SECTIONS 2 AND 11, T23S, R2W, W.M. WAS MONUMENTED WITH A 5/8" IRON ROD AND RED PLASTIC CAP MARKED "SWEEDEN LS 2752, WHICH WAS SET TO PERPETUATE THE TRUE CORNER POSITION PER M11-25. THE TRUE PROPERTY LINE WAS MARKED BY BLAZING TREES ON EITHER SIDE OF THE TRUE LINE (BLAZES PAINTED ORANGE) AND HANGING ORANGE RIBBON ALONG THE PROPERTY LINE. THERE WERE NO NEW CORNERS ESTABLISHED IN THIS SURVEY AND CORNER ACCESSORIES WERE ADDED, AS SHOWN.



- ⑤ 1/4 CORNER 1 & 12  
FOUND: 17" CEDAR SNAG CORNER TREE  
FOUND: 1"X 1" "T" IRON WITH 1" BRASS DISK "HAINES 239" PER M5-20 BEARS N70°W (RECORD N78°31'W), 2.56' FROM CORNER TREE (RECORD IRON ROD & BRASS CAP)  
MARKED BEARING TREES FROM "T" IRON AND NOT CORNER TREE  
41" CEDAR, N8°E, 7.9' TO SPIKE AT SIDE/CENTER - SCRIBED "1/4S1 BT"  
19" HEMLOCK, S29°E, 23.6' TO SPIKE AT SIDE/CENTER - SCRIBED "1/4S12 BT"  
11" FIR, S18°W, 54.0' TO SPIKE AT SIDE/CENTER - SCRIBED "1/4S12 BT"  
47" CEDAR, N56°W, 7.4' TO SPIKE AT SIDE/CENTER - SCRIBED "1/4S1 BT"
- ⑥ SECTION CORNER 1, 2, 11, 12  
FOUND: 2 1/2" DOUGLAS COUNTY BRASS CAP "1964"  
45" CEDAR, N36°E, 55.6' TO SIDE/CENTER - ORIGINAL BEARING TREE  
36" MYRTLE, S53°E, 77.6' TO SIDE/CENTER - 1964 COUNTY BEARING TREE  
MARKED: 7" MAPLE, S62°W, 20.4' TO SIDE/CENTER - SCRIBED "T23SR7WS11 BT"  
22" FIR, N62°W, 29.6' TO SPIKE AT SIDE/CENTER - SCRIBED "T23SR7WS2 BT"
- ⑦ 1/4 CORNER 2 & 11  
FOUND: 5/8" IRON ROD WITH RED PLASTIC CAP "SWEEDEN PLS 2752" PER M154-12  
12" FIR, N24°E, 36.1' TO SPIKE AT SIDE/CENTER - M154-12 BEARING TREE  
10" FIR, N87°E, 12.5' TO SPIKE AT SIDE/CENTER - M154-12 BEARING TREE (RECORD BEARING S85°W PER SURVEY & N85°W PER TAG)  
12" FIR, S70°W, 27.4' TO SPIKE AT SIDE/CENTER - M154-12 BEARING TREE  
17" FIR, N63°W, 13.0' - TO SPIKE IN SIDE/CENTER - M154-12 BEARING TREE

BASIS OF BEARING: WEST LINE OF SECTION 6 BETWEEN SOUTHWEST SECTION CORNER AND WEST 1/16 CORNER PER M163-25

LEGEND

- ⊙ - CORNERS FOUND - 5/8" REBAR WITH 2" ALUMINUM CAP PER M111-72 OR AS NOTED
- ⊕ - PUBLIC LAND SURVEY CORNERS FOUND - AS NOTED
- - BLAZED AND PAINTED PROPERTY LINE
- ( ) - RECORD SURVEY DATA, AS SHOWN
- [ ] - RECORD-1881 GLO SURVEY
- (( )) - RECORD-1957 BLM SURVEY

REGISTERED PROFESSIONAL LAND SURVEYOR  
*Daniel W. Baker*  
DANIEL W. BAKER  
JULY 16, 1982  
1978

EXPIRES 12/31/15

I CERTIFY THAT THIS MAP WAS PREPARED USING A HP51645A INK CARTRIDGE ON JPC-4M2 DOUBLE MATTE FILM

PROPERTY LINE SURVEY IN  
NE 1/4, SE 1/4 & NW 1/4 OF SECTION 12,  
& NE 1/4 OF SECTION 11, T23S, R7W, W.M.  
DOUGLAS COUNTY, OREGON

CLIENT: ROCKING "C" RANCH

DRAWN BY: DWB      BAKER AND ASSOCIATES, SURVEYORS  
DATE: 12/15/14      1347 MARKET STREET  
FILE: RC230711&12      SPRINGFIELD, OREGON 97477 (541) 343-7243