

AMENDED RECORD OF SURVEY

(SURVEY M166-25)
LOCATED IN
THE NE 1/4 OF SECTION 21
AND
THE NW 1/4 OF SECTION 22
TOWNSHIP 32 SOUTH, RANGE 2 WEST, W.M.
DOUGLAS COUNTY, OREGON

FILED

Date: 7-13-2015 By: JC
This survey consists of:
Map: M166-25-A-H
Jurnal Rpt: _____

DOUGLAS COUNTY
SURVEYOR

LINE TABLE

Line #	Direction	Length
L285	S14°10'07"W	438.41'
L286	N75°52'01"W	30.00'
L287	S24°58'16"W	70.30'
L288	S20°20'55"E	150.44'
L289	N18°42'49"E	79.32'
L290	N20°20'51"W	20.00'
L291	N79°27'37"E	47.54'
L292	S60°06'08"E	59.06'
L293	S38°13'32"E	54.71'
L294	S28°25'12"E	70.41'
L295	S4°32'58"E	58.74'
L296	S0°05'20"E	59.78'
L297	S4°31'59"W	177.31'
L298	N20°20'51"W	47.54'
L299	N4°31'59"E	133.38'
L300	N0°05'20"W	58.20'
L301	N4°32'58"W	53.74'
L302	N28°25'12"E	64.47'
L303	N38°13'32"W	49.13'
L304	N60°06'08"W	47.83'
L305	S79°54'54"W	36.77'
L306	S20°20'51"E	33.93'
L307	S20°20'51"E	32.16'
L308	S11°09'52"E	27.05'
L309	S52°41'57"W	69.46'
L310	S41°02'43"W	18.73'
L311	S36°12'03"W	33.95'
L312	S25°42'48"W	10.16'
L313	S61°28'55"E	14.09'
L314	N78°35'59"E	17.53'
L315	N42°02'20"E	12.85'
L316	N1°36'38"E	19.05'
L317	N76°06'38"E	22.40'
L318	N83°36'40"E	48.30'
L319	S33°45'35"W	14.15'
L320	S11°12'55"E	82.99'
L321	S56°12'33"E	14.14'
L322	S11°12'55"E	114.57'
L323	N11°12'55"W	7.14'
L324	N56°12'33"W	14.14'
L325	N11°12'55"W	45.86'
L326	N33°47'27"E	14.14'
L327	S11°12'55"E	50.36'
L328	S11°12'55"E	66.88'
L329	S41°14'28"W	64.01'
L330	S31°32'01"W	12.12'
L331	N15°58'52"E	129.05'
L332	S31°32'01"W	138.55'
L333	S41°14'28"W	70.87'
L334	S41°14'28"W	31.88'
L335	S31°32'01"W	74.41'
L336	S39°48'21"E	60.31'
L337	N9°03'36"E	135.42'
L338	S9°03'36"W	13.28'
L339	S39°48'21"E	27.45'

Line #	Direction	Length
L340	S84°48'20"E	14.14'
L341	S39°48'21"E	21.23'
L342	S47°15'15"E	239.93'
L343	N39°48'21"W	152.82'
L344	N84°48'20"W	14.14'
L345	N39°48'21"W	38.64'
L346	N47°15'15"W	16.07'
L347	N2°15'15"W	14.14'
L348	N47°15'15"W	241.53'
L349	N73°29'45"W	123.92'
L350	S48°27'06"E	131.45'
L351	N83°57'48"E	67.73'
L352	S48°27'06"E	74.67'
L353	S73°29'45"E	75.04'
L354	S20°34'04"E	62.67'
L355	S73°29'45"E	122.88'
L356	N48°27'06"W	83.29'
L357	S48°27'06"E	49.82'
L358	S41°32'54"W	15.00'
L359	S48°27'06"E	48.50'
L360	S38°20'30"E	147.92'
L361	N49°47'50"W	51.51'
L362	N40°09'49"E	15.00'
L363	S49°47'50"E	50.00'

CORNER NOTES:

(142739)

1/4 CORNER SECTIONS 21/22
FOUND 3" BRASS CAP
STAMPED OLS 536, 1968
AND CS 1988
BY REFERENCES:
1) FOUND 15" CEDAR WITH HEALED FACE
AND TAG DATED 10/13
S 23° E - 9.0' TO NAIL SIDE CENTER
2) FOUND 29" FIR WITH HEALED FACE
AND TAG DATED 10/13
N 76° W - 46.4' TO NAIL SIDE CENTER

(142745)

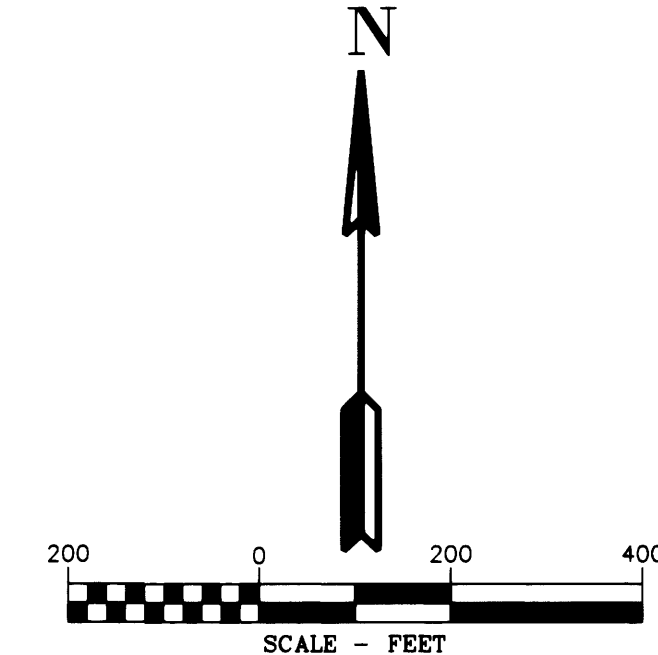
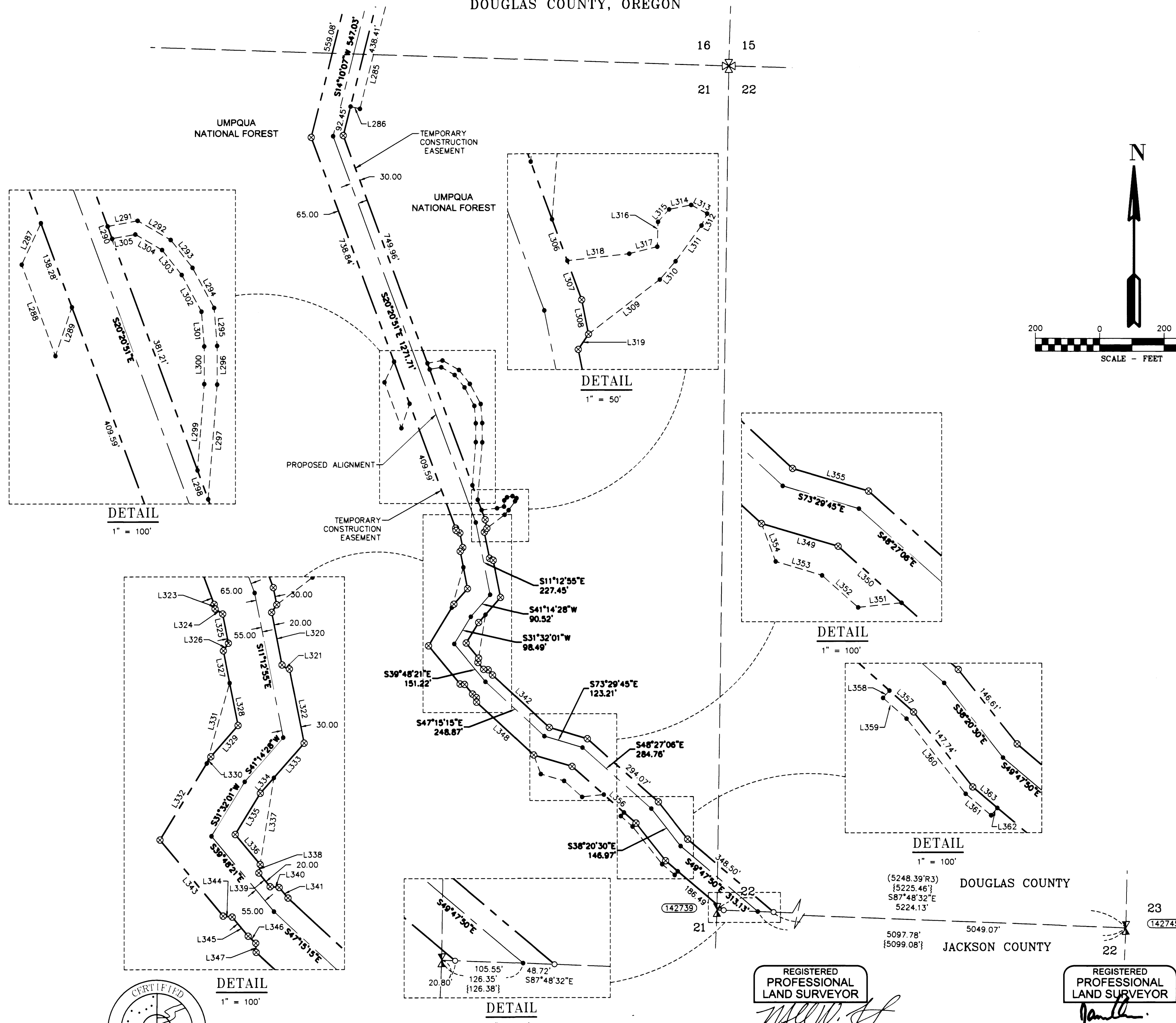
1/4 CORNER SECTIONS 22/23
FOUND 2-1/2" BRASS CAP
STAMPED CS 1986
BY REFERENCES:
1) 12.5" FIR WITH HEALED FACE
AND TAG DATED 8/86
N 76° E - 28.4' TO NAIL SIDE CENTER
2) 28" FIR 50" TALL SNAG WITH HEALED FACE
S 45° E - 7.5' NO TAG FOUND OR SET
3) 19.5" FIR 30" TALL SNAG WITH VISIBLE SCRIBE
AND TAG DATED 8/86
S 10° W - 9.9'
4) SET NEW BEARING TREE
10" FIR (MARKED 1/4 S22 BT)
SET TAG DATED 8/14
S 55° W - 11.95' TO NAIL SIDE CENTER

REFERENCE SURVEYS:

- 1) ORIGINAL GLO NOTES, SOUTH LINE OF TOWNSHIP 31 SOUTH, RANGE 2 WEST - SEPT. 26, 1908
- 2) ORIGINAL GLO PLAT, TOWNSHIP 32 SOUTH, RANGE 2 WEST - DEC. 11, 1903
- 3) COUNTY SURVEY NO. M166-25

LEGEND

- 5/8" X 24" REBAR WITH 1 1/4" YELLOW PLASTIC CAP FROM SURVEY M166-25 VERIFIED OR RESET THIS AMENDED SURVEY. (KLEIN & ASSOC. PLS 59002)
- ⊙ 5/8" X 24" REBAR WITH 1 1/4" YELLOW PLASTIC CAP FROM SURVEY M166-25 VERIFIED OR RESET THIS AMENDED SURVEY. (DYER PARTNER LS 2340)
- ⊙ FOUND MONUMENT OF RECORD, SEE CORNER NOTES
- COMPUTED POINT, NOT MONUMENTED
- ⊙ FOUND QUARTER CORNER SEE CORNER NOTES
- ⊙ FOUND SECTION CORNER SEE CORNER NOTES
- ⊙ COMPUTED QUARTER CORNER
- ⊙ COMPUTED SECTION CORNER
- ⓪ POINT NUMBER
- {XXX.XX'} GROUND DISTANCE
- {XXX.XX'} RECORD DISTANCE PER REFERENCED SURVEY
- R1 REFERENCED SURVEY
- PROPOSED ALIGNMENT
- - - - - TEMPORARY CONSTRUCTION EASEMENT
- - - - - TEMPORARY WORK AREA



REGISTERED PROFESSIONAL LAND SURVEYOR
Douglas A. Popham
OREGON JULY 14, 1988
DOUGLAS A. POPHAM 2877
Expires 12-31-2016

Primm Land Surveying, Inc.
1340 NE 4th Street, Hermiston, OR 97838
TEL (541) 564-7887 FAX (541) 567-8020

CERTIFIED FEDERAL SURVEYOR
1245
Expires June 5, 2017

REGISTERED PROFESSIONAL LAND SURVEYOR
MICHAEL W. ERICKSON
2340
Expires 12-31-2015

D THE DYER PARTNERSHIP ENGINEERS & PLANNERS, INC.
1330 Teakwood Avenue / Coos Bay, Oregon 97420
(541) 269-0732 / WWW.DYERPART.COM

REGISTERED PROFESSIONAL LAND SURVEYOR
JAMES M. KLEIN
59002
Expires 6-30-2015

KA Klein & Associates, Inc.
ENGINEERING • SURVEYING • PLANNING
1411 12th Street/Hood River, OR 97031
TEL: 541-386-3322 • FAX: 541-386-2515

PACIFIC CONNECTOR GAS PIPELINE PROJECT
PACIFIC CONNECTOR GAS PIPELINE, LP
RECORD OF SURVEY
SECTIONS 21 AND 22
TOWNSHIP 32 SOUTH, RANGE 2 WEST, W.M.
DOUGLAS COUNTY OREGON

DRAWN BY: LJS DATE: 04-08-2015 ISSUED FOR BID: SCALE: 1" = 200'

CHECKED BY: DATE: ISSUED FOR CONSTRUCTION:

APPROVED BY: DATE: DRAWING NUMBER: SHEET 8 OF 8