

MAP OF SURVEY

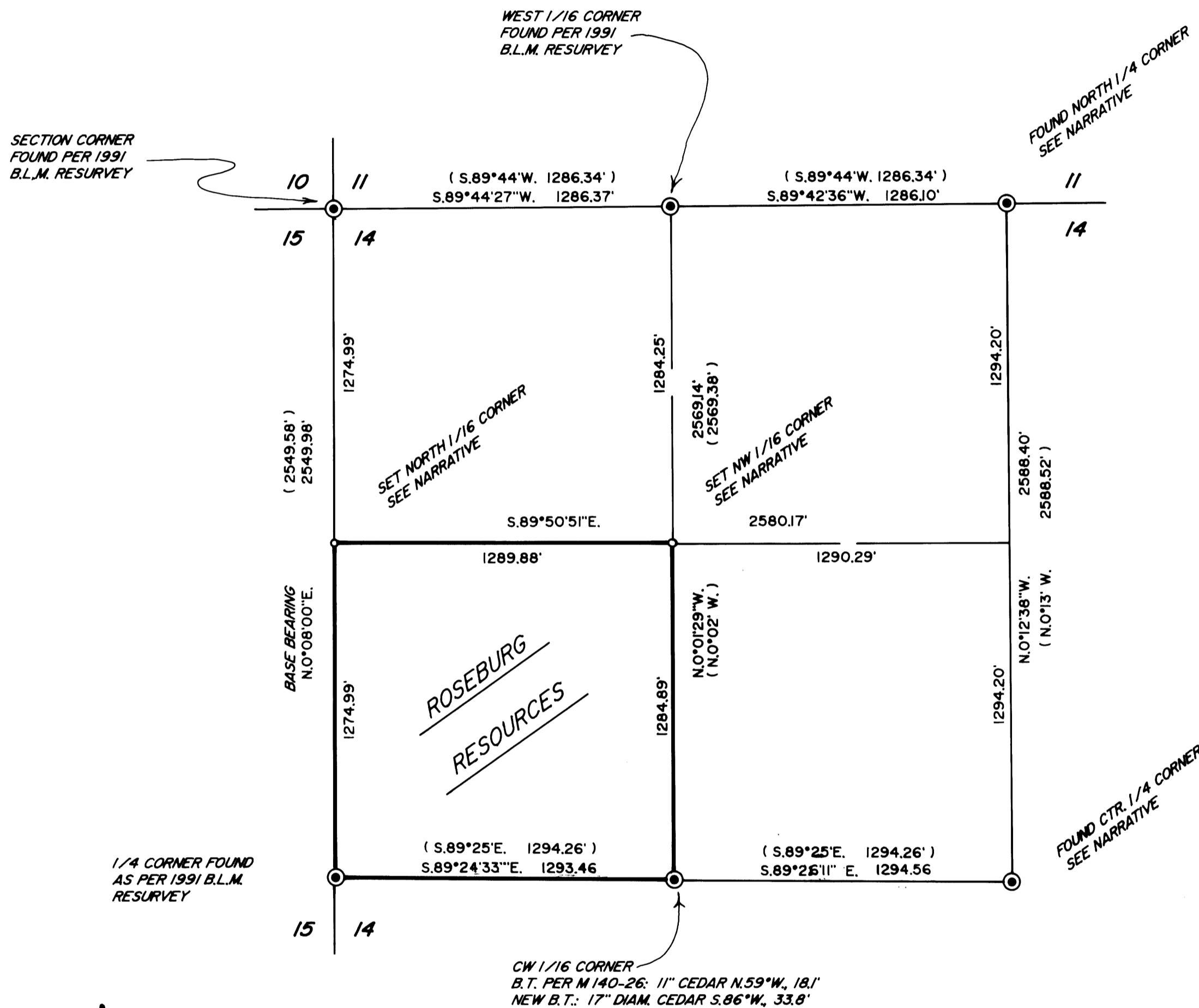
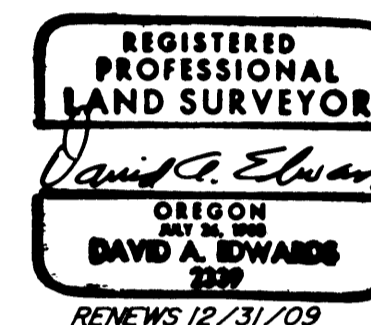
LOCATED in the NW 1/4 of Section 14, T. 28 S., R. 4 W., W.M.
in Douglas County, Oregon.

November 22, 2008

FILED
Date: 12/1/2008 By: hW
This survey consists of:
Map: M 158-30
Narrative:
Corner Rpt:
DOUGLAS COUNTY
SURVEYOR

SURVEYED FOR: ROSEBURG RESOURCES CO.
P.O. BOX 1088
ROSEBURG, OREGON 97470

SURVEYED BY: DAVID EDWARDS LAND SURVEYING
P.O. BOX 361
OAKLAND, OREGON 97462
PHONE: (541) 459-0512



LEGEND

- ⊙ INDICATES COUNTY SURVEYOR OR B.L.M. BRASS CAP FOUND.
- INDICATES 5/8" X 30" STEEL REBAR WITH 2 1/2" DIAM. ALUM. CAP STAMPED PER 1973 MANUAL AND WITH "ROSEBURG RESOURCES CO.", "LS 2339" AND "2008".
- () DENOTES RECORD DATA PER 1991 B.L.M. RESURVEY.
- INDICATES BOUNDARY BLAZED AND POSTED THIS SURVEY.

SCALE: 1" = 400'

BASIS OF BEARINGS: 1991 B.L.M. RESURVEY AS SHOWN.

NARRATIVE

THE PURPOSE OF THIS SURVEY IS TO MONUMENT THE NW AND NE CORNERS OF THE SW 1/4 OF THE NW 1/4 OF SECTION 14 AND TO BLAZE, POST AND FLAG THE BOUNDARIES OF SAID SW 1/4 OF NW 1/4. CONTROLLING MONUMENTS WERE TIED AND THE SUBDIVISION OF THE NW 1/4 COMPUTED AS SHOWN. THE BOUNDARIES WERE MARKED BY BLAZING TREES ON EACH SIDE OF LINE, BY SETTING 6 FOOT STEEL POSTS ON LINE AT INTERVALS OF 200 FEET OR LESS AND BY HANGING LIBERAL AMOUNTS OF RED FLAGGING ALONG THE TRUE LINE. BEARING TREES WERE SCRIBED ACCORDING TO THE 1973 MANUAL, MEASURED TO CENTER OF TREE AT ROOT CROWN AND ARE SITUATED AS FOLLOWS:

AT THE NORTH 1/16 CORNER TO SECTIONS 14 AND 15:

- A 7" DIAM. FIR BEARS N.40°E., 14.1 FEET
- A 7" DIAM. FIR BEARS S.18°E., 15.2 FEET

AT THE NORTHWEST 1/16 CORNER:

- A 6" DIAM. FIR BEARS N.79°E., 16.5 FEET
- A 13" DIAM. FIR BEARS N.49°W., 7.35 FEET

AT THE CENTER 1/4 CORNER:

- 58" FIR S.45°E., 19.8 FEET
- NEW B.T.: 6" FIR S.52°W., 36.3 FEET
- SET 6 FOOT STEEL POST 2' EAST

AT THE NORTH 1/4 CORNER:

- B.L.M. B.T.- A 15" DIAM. CEDAR BEARS N.67°W., 12.2 FEET
- NEW B.T.: A 28" DIAM. CEDAR BEARS S.83°W., 36.0 FEET
- SET 6 FOOT STEEL POST 2' EAST

FIELD CREW: BRANT MILLER, ERIC SPRINKLE AND CHRIS EDWARDS.

EQUIPMENT: NIKON TOTAL STATION.

COMPUTATIONS AND DRAFTING: DAVID EDWARDS.



MAP FILE M 158-30

MAP FILE M 158-30