

LONE ROCK TIMBER MANAGEMENT COMPANY

PO BOX 1127 ROSEBURG, OREGON 97470
TOWNSHIP 22 SOUTH, RANGE 5 WEST, W.M. SECTION 19

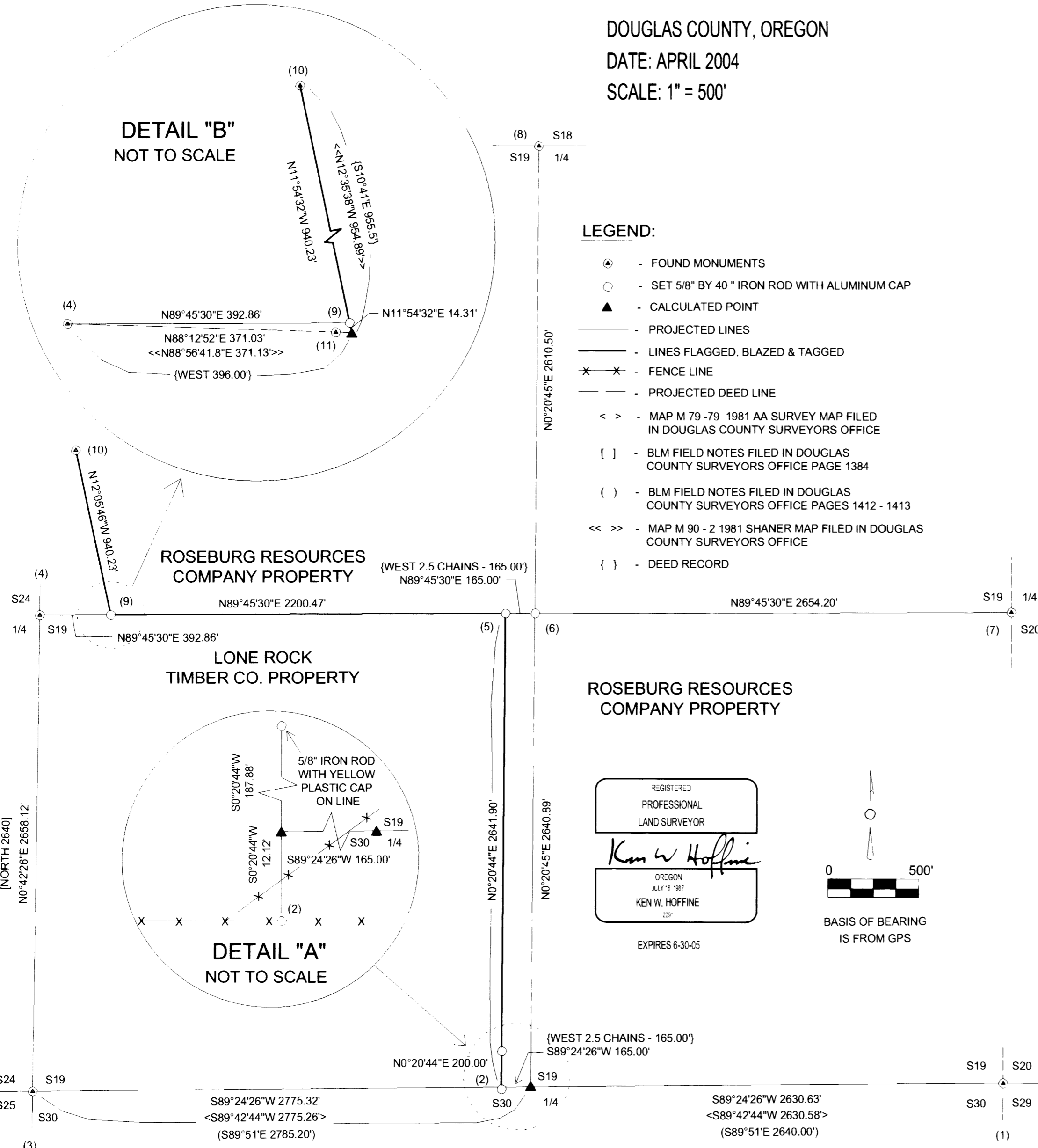
SURVEY: J22-5-19 TRACT- JUNIPER PROPERTIES LIMITED PARTNERSHIP
MANAGED BY LONE ROCK TIMBER LAND CO.

FILED
Date: 5-11-2004 By: JC
This survey consists of:
Map: M 144-38
Narrative:
Corner Rpt:
DOUGLAS COUNTY SURVEYOR

DOUGLAS COUNTY, OREGON

DATE: APRIL 2004

SCALE: 1" = 500'



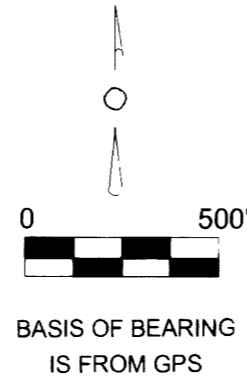
LEGEND:

- ⊙ - FOUND MONUMENTS
- - SET 5/8" BY 40" IRON ROD WITH ALUMINUM CAP
- ▲ - CALCULATED POINT
- - PROJECTED LINES
- - LINES FLAGGED, BLAZED & TAGGED
- ✕ - FENCE LINE
- - PROJECTED DEED LINE
- < > - MAP M 79 -79 1981 AA SURVEY MAP FILED IN DOUGLAS COUNTY SURVEYORS OFFICE
- [] - BLM FIELD NOTES FILED IN DOUGLAS COUNTY SURVEYORS OFFICE PAGE 1384
- () - BLM FIELD NOTES FILED IN DOUGLAS COUNTY SURVEYORS OFFICE PAGES 1412 - 1413
- << >> - MAP M 90 - 2 1981 SHANER MAP FILED IN DOUGLAS COUNTY SURVEYORS OFFICE
- { } - DEED RECORD

REGISTERED
PROFESSIONAL
LAND SURVEYOR

Ken W. Hoffine
OREGON
JULY 1981
KEN W. HOFFINE
227

EXPIRES 6-30-05



NARRATIVE:

THIS SURVEY WAS CONDUCTED TO ESTABLISH PROPERTY LINES AND PROPERTY CORNERS FOR TIMBER CUTTING PURPOSES. WE INITIATED THIS SURVEY AT THE SOUTHEAST CORNER OF SECTION 19, A DC BRASS CAP SET FROM ORIGINAL EVIDENCE. WE RAN A RANDOM TRAVERSE ALONG THE SOUTH LINE OF SECTION 19 TO THE SOUTHWEST CORNER AND THEN NORTHERLY TO THE WEST 1/4 OF SECTION 19. BOTH DC BRASS CAPS. WE THEN RETURNED TO A TRAVERSE POINT NEAR THE COMPUTED POINT FOR THE SOUTH 1/4 OF SECTION 19 AND RAN A RANDOM TRAVERSE ALONG FENCE LINES NORTHERLY TO THE MIDDLE OF THE SECTION. THEN TRAVERSED WESTERLY TO THE WEST 1/4 OF SECTION 19. WE ALSO RAN A RANDOM TRAVERSE NORTHERLY TO THE NORTH 1/4 OF SECTION 19, A DC BRASS CAP SET FROM ORIGINAL EVIDENCE. WE BALANCED OUR TRAVERSE DATA INTO OUR GPS CONTROL NETWORK AND COMPUTED A SUBDIVISION BREAKDOWN OF SECTION 19. THE NORTH AND EAST PROPERTY LINE OF LONE ROCK'S (LRT) PROPERTY IN THE SOUTHWEST 1/4 OF SECTION 19 BORDERS PROPERTY WITH ROSEBURG RESOURCES COMPANY (RRC). DISCUSSIONS WITH ROSEBURG RESOURCES SURVEYOR AND ENGINEER, MARK SMALLEY, CONCLUDED WITH THE AGREEMENT FOR MARKED PROPERTY LINES TO FOLLOW DEED DESCRIPTIONS AND TO DISREGARD ALL FENCE LINES BETWEEN LRT AND RRC PROPERTIES. WE THEN RAN A CLOSED LOOP TRAVERSE TO TIE IN IRODS (10) AND (11) FROM SHANER'S MAP M90-2. BASED ON SHANER'S MAP AND FOUND MONUMENTS, WE SET CORNER (9) ON THE DEED PROPERTY LINE BETWEEN RRC AND LRT WHERE THE DEED LINE INTERSECTS THE EAST-WEST CENTER OF SECTION LINE. WE ALSO SET CORNERS (5) AND (2) AT THE DEED DESCRIPTION 2.5 CHAINS WEST OF THE NORTH-SOUTH CENTER OF SECTION LINE. THIS SURVEY WAS DONE WITH A NIKON DTM 450, TRIMBLE GPS 4400, 4000SSE, 4000SE AND PRO XR EQUIPMENT WITH GARY ANGIOLET, PAT CARTER, MARK DVORSCAK AND IGNACIO ROMAN ASSISTING ME.

CORNER INFORMATION:

THE FOLLOWING IS A RECORD OF ALL CORNERS FOUND OR SET DURING THE COURSE OF THIS SURVEY.

- 1) THE SOUTHEAST SECTION CORNER OF SECTION 19
FOUND 1958 DOUGLAS COUNTY BRASS CAP 1.5 FEET ABOVE GROUND.
-- 36" OAK BEARS S79 3/4"E, 112.9 FEET (RECORD S81"E, 113.0 FEET) VERY WELL HEALED FACE AND LOCATION TAG
-- 11" OAK BEARS N87 1/2"W, 4.0 FEET (NO RECORD) LOCATION TAG
-- 20" OAK BEARS S79 3/4"W, 24.1 FEET (RECORD S80"W, 24.4 FEET) VERY WELL HEALED FACE
-- FOUND 6" X 12" X 4" STONE NORTH 8.0 FEET AS PER RECORD
CORNER LIES ON SOUTH FACING SLOPE IN 20 FOOT TALL REPROD AND SCRUB OAK.
- 2) PROPERTY CORNER
SET 5/8" X 40" IRON ROD WITH YELLOW PLASTIC CAP MARKED LONE ROCK TIMBER PLS 2291.
-- FENCE CORNER POST BEARS EAST 140.5 FEET. WE PUT UP LOCATION TAG
-- HEAVY GATE POST BEARS N60 1/4"W, 24.1 FEET. WE PUT UP LOCATION TAG
-- SET 5/8" X 40" IRON ROD WITH YELLOW PLASTIC CAP MARKED LONE ROCK TIMBER PLS 2291 BEARS N0°20'44"E, 200.0 FEET
CORNER LIES IN FENCE LINE. GRASS FIELD TO SOUTH AND WEST GRASS AND PLANTED TREES TO NORTH AND EAST.
- 3) THE SOUTHWEST SECTION CORNER OF SECTION 19
FOUND 1959 DOUGLAS COUNTY BRASS CAP.
-- 36" DEAD OAK BEARS N87 1/2"E, 48.5 FEET (RECORD N89"E, 47.5 FEET) HEALED AND TAG
-- 21" DEAD OAK BEARS S77 3/4"E, 32.7 FEET (RECORD S74"E, 32.8 FEET) HEALED FACE
-- 22" DOUGLAS FIR BEARS S59 1/2"E, 55.4 FEET (RECORD S57"E, 55.7 FEET) HEALED FACE AND TAG
-- 14" OAK BEARS N37 3/4"W, 9.1 FEET (RECORD N37"W, 8.7 FEET) HEALED FACE AND TAG
-- 23" OAK BEARS S60"W, 63.4 FEET (RECORD S60"W, 66.0 FEET) HEALED FACE AND TAG
CORNER LIES ON SOUTH FACING SLOPE APPROXIMATELY 35 FEET NORTH OF SMALL DRAW AND 1 FOOT NORTH OF EAST-WEST RUNNING FENCE LINE.
- 4) THE WEST 1/4 CORNER OF SECTION 19
FOUND 1981 ALUMINUM CAP.
-- 27" OAK BEARS S79 3/4"E, 26.0 FEET (RECORD S79"E, 26.3 FEET) WELL HEALED FACE AND HAINES WASHER
-- 27" OAK BEARS S42 3/4"W, 5.6 FEET (NO RECORD, OPENED AND PARTIALLY REHEALED FACE AND TAG
-- 28" OAK BEARS S71 1/2"W, 15.8 FEET (RECORD S74"W, 15.2 FEET) CUT OUT FACE, HAINES WASHER AND TAG
-- 15" DOUGLAS FIR BEARS N66 3/4"W, 26.1 FEET (RECORD N67"W, 26.5 FEET) HEALED FACE AND TAG
CORNER LIES ON SLIGHT WEST SLOPE IN MIXED LARGE OAKS AND CONIFER TREES.
- 5) PROPERTY CORNER
SET 5/8" X 40" IRON ROD WITH YELLOW PLASTIC CAP MARKED LONE ROCK TIMBER PLS 2291.
-- FOUND 5/8" X 40" IRON ROD AT FENCE CORNER BEARS N81°24'31"E, 25.7 FEET THIS IRON ROD IS THE SOUTHEAST CORNER OF MAP M 70-54
-- THE CENTER 1/4 CORNER BEARS N89°45'30"E, 165.0 FEET
-- WE PUT METAL FENCE POST APPROXIMATELY 1.0 FEET NORTH
CORNER LIES 6.0 FEET NORTH OF FENCE LINE RUNNING EAST-WEST, AND APPROXIMATELY 100 FEET NORTH OF CREEK
- 6) THE CENTER CORNER OF SECTION 19
SET 5/8" X 40" IRON ROD WITH 2 1/2" ALUMINUM CAP MARKED LONE ROCK TIMBER COMPANY T22S R5W C1/4 S19 2004 PLS 2291
-- 19" DOUGLAS FIR BEARS N56"E, 28.0 FEET. WE SCRIBE C1/4 S19 B.T. AND TAG TREE
-- 11" DOUGLAS FIR BEARS N43"W, 12.5 FEET. WE SCRIBE C1/4 S19 B.T. AND TAG TREE
-- 16" MAPLE BEARS S35"W, 26.5 FEET. WE SCRIBE C1/4 S19 B.T. AND TAG TREE
-- 15" ALDER BEARS S10 1/4"E, 42.7 FEET. WE BARK SCRIBE C1/4 S19 B.T. AND TAG TREE
CORNER ON WEST SLOPE APPROXIMATELY 100 FEET WEST OF ROAD AND 75 FEET NORTH OF CREEK. WE PUT METAL FENCE POST APPROXIMATELY 1.0 FEET NORTH.
- 7) THE EAST 1/4 CORNER OF SECTION 19
FOUND 1958 DOUGLAS COUNTY BRASS CAP.
-- 19" DOUGLAS FIR BEARS S45°20'E, 25.3 FEET AS PER RECORD, HEALED FACE
-- 20" DOUGLAS FIR BEARS S56°24'W, 24.5 FEET AS PER RECORD, HEALED FACE
-- 22" FIR SNAG BEARS N44°40'W, 59.1 FEET AS PER RECORD, VISIBLE SCRIBING AND LOCATION TAG
CORNER LIES ON NORTH SLOPE, ON NORTH SIDE OF VERY OLD SKID ROAD. FENCE CORNER BEARS NORTH 12.5 FEET, FENCE RUNS NORTH AND EAST. METAL FENCE POST ALONG SIDE CORNER.
- 8) THE NORTH 1/4 CORNER OF SECTION 19
FOUND 2002 DOUGLAS COUNTY CAP.
-- 9" MAPLE BEARS N20 1/2"E, 19.9 FEET (RECORD N20"E, 20.2 FEET) VISIBLE SCRIBING AND TAG
-- 9" DOUGLAS FIR BEARS N29 1/2"W, 17.4 FEET (RECORD N31"W, 17.4 FEET) VISIBLE SCRIBING AND TAG
-- 23" OAK BEARS S84 1/4"W, 7.6 FEET (RECORD S81 1/2"W, 7.3 FEET) VISIBLE SCRIBING AND TAG
-- 12" WHITE FIR BEARS S19 1/4"E, 16.8 FEET (RECORD S19"E, 17.4 FEET) VISIBLE SCRIBING WITH TAG ON BACK SIDE OF TREE
CORNER LIES IN MOUND OF STONES 3.3 FEET NORTH OF EAST - WEST FENCE LINE AND APPROX. 125 FEET NORTH OF ROCK ROAD.

- 9) PROPERTY CORNER
SET 5/8" X 40" IRON ROD WITH YELLOW PLASTIC CAP MARKED LONE ROCK TIMBER PLS 2291
-- 19" DOUGLAS FIR BEARS N28 3/4"E, 32.3 FEET WE SCRIBE BT AND TAG TREE.
-- SHANER IRON ROD FROM MAP M 90 -2 BEARS S59"W, 25.67 FEET
CORNER LIES ON WEST FACING SLOPE IN STAND OF SMALL CEDAR AND FIR
- 10) PROPERTY CORNER
FOUND 5/8" IRON ROD SET BY SHANER IN MAP M 90 - 2
- 11) PROPERTY CORNER
FOUND 5/8" IRON ROD SET BY SHANER IN MAP M 90 - 2

MAP FILE M 144-38

MAP FILE M 144-38