

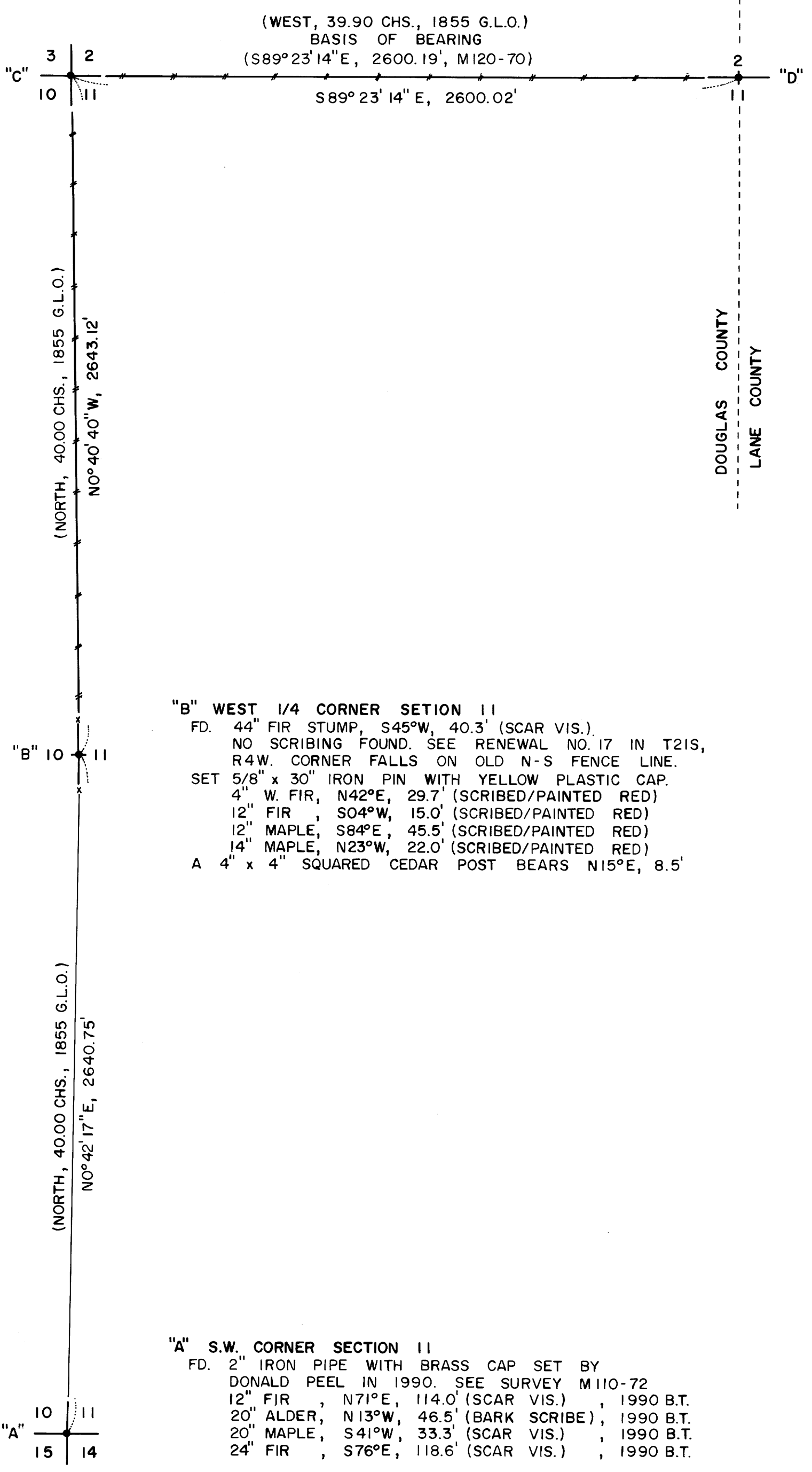
Date: 4-23-96 By: AP  
This survey consists of:  
Map: M123-56  
Narrative: \_\_\_\_\_  
Corner Pkt: \_\_\_\_\_  
DOUGLAS COUNTY SURVEYOR

**SURVEYORS FILE DATA  
DO NOT REMOVE FROM OFFICE**

"C" N.W. CORNER SECTION 11  
FD. 1969 DOUGLAS COUNTY BRASS CAP.  
14" W. FIR, S30°E, 17.0' (SCAR VIS.), 1969 B.T.  
14" W. FIR, S22°W, 19.2' (SCAR VIS.), 1969 B.T.  
14" W. FIR, N83°W, 11.5' (SCAR VIS.), 1969 B.T.  
24" CEDAR, N55°E, 54.2' (SCAR VIS.), 1969 B.T.

"D" NORTH 1/4 CORNER SECTION 11  
FD. 1-1/2" IRON PIPE WITH BRASS CAP SET BY  
LES ROBERTS IN 1983. SEE FILE C.S. 58/229-20  
16" FIR, N31°W, 16.3' (SCAR VIS.), 1983 B.T.  
24" FIR, N71°E, 35.3' (SCAR VIS.), 1983 B.T.

BOUNDARY SURVEY  
FOR  
WILLAMETTE INDUSTRIES INC.  
IN  
SECTION 11, T21S, R4W, W.M.  
DOUGLAS COUNTY, OREGON  
BY  
ROBERTS SURVEYING INC.  
P.O. BOX 7155  
EUGENE, OREGON 97401  
PHONE 345-1112



"B" WEST 1/4 CORNER SECTION 11  
FD. 44" FIR STUMP, S45°W, 40.3' (SCAR VIS.).  
NO SCRIBING FOUND. SEE RENEWAL NO. 17 IN T21S,  
R4W. CORNER FALLS ON OLD N-S FENCE LINE.  
SET 5/8" x 30" IRON PIN WITH YELLOW PLASTIC CAP.  
4" W. FIR, N42°E, 29.7' (SCRIBED/PAINTED RED)  
12" FIR, S04°W, 15.0' (SCRIBED/PAINTED RED)  
12" MAPLE, S84°E, 45.5' (SCRIBED/PAINTED RED)  
14" MAPLE, N23°W, 22.0' (SCRIBED/PAINTED RED)  
A 4" x 4" SQUARED CEDAR POST BEARS N15°E, 8.5'

"A" S.W. CORNER SECTION 11  
FD. 2" IRON PIPE WITH BRASS CAP SET BY  
DONALD PEEL IN 1990. SEE SURVEY M110-72  
12" FIR, N71°E, 114.0' (SCAR VIS.), 1990 B.T.  
20" ALDER, N13°W, 46.5' (BARK SCRIBE), 1990 B.T.  
20" MAPLE, S41°W, 33.3' (SCAR VIS.), 1990 B.T.  
24" FIR, S76°E, 118.6' (SCAR VIS.), 1990 B.T.

*L. D. Roberts*  
EXPIRES 12-31-96

**N**  
APRIL 9, 1996  
SCALE 1" = 400'

- LEGEND,
- MONUMENTS FOUND AND USED FOR CONTROL
  - MONUMENTS SET - 5/8" x 30" IRON PINS WITH YELLOW PLASTIC CAPS. CAPS STAMPED "ROBERTS P.L.S. 1039"
  - //— LINES BLAZED, PAINTED AND MARKED WITH GREEN METAL FENCE POSTS.
  - ( ) DATA OF RECORD-1855 G.L.O. SURVEY BY GORDON AND GARDNER. SURVEY M120-70 BY CHARLES W. GUILLE IN 1994.
- BASIS OF BEARING- LINE "C-D" FROM SURVEY M120-70  
DISTANCES TO B.T.'S ARE CENTER MEASURE  
ALL NEW B.T.'S ARE SCRIBED

NARRATIVE, THE PURPOSE OF THIS SURVEY IS TO BLAZE, PAINT AND POST THE FOLLOWING LINES. 1) THE WEST 1/2 OF THE NORTH LINE OF SECTION 11. 2) THE NORTH 1/2 OF THE WEST LINE OF SECTION 11. THE WEST 1/4 CORNER, THE N.W. SECTION CORNER AND THE NORTH 1/4 CORNER WERE FOUND IN THE FIELD AND USED AS CONTROL FOR THIS SURVEY. THE S.W. CORNER OF SECTION 11 WAS TIED IN ORDER TO DETERMINE AN "AREA OF SEARCH" SO WE COULD LOOK FOR THE WEST 1/4 CORNER OF SECTION 11. A CLOSED RANDOM PROPERTY LINE TRAVERSE, USING A WILD T-16 THEODOLITE AND A DI-4L E.D.M., WAS RUN ALONG ALL LINES TO BE BLAZED AND POSTED. OFFSETS WERE COMPUTED FROM THIS RANDOM PROPERTY LINE TRAVERSE TO THE TRUE PROPERTY LINES. PROPERTY LINES WERE MARKED WITH RED PAINTED BLAZES, RED PLASTIC RIBBON AND GREEN METAL FENCE POSTS.

MAP FILE M123-56

MAP FILE M123-56