

**PROPERTY SURVEY**  
**LOCATED IN SECTIONS 14, 23, 26 & 35, TOWNSHIP 20 SOUTH, RANGE 12 WEST, W. M.**  
**DOUGLAS COUNTY, OREGON**

FILED  
 Date: 10-21-94 By: JP  
 This survey consists of: 4 ANS  
 Map: M. 120-75 B  
 Narrative: C.S. 63/145  
 Corner Rpt: C.S. 63/145

**SURVEY FOR: TAHKENITCH TREE FARM**  
**AGENT: BOB CRAIN**  
 PO BOX 495  
 REEDSPORT, OR. 97467

DOUGLAS COUNTY  
 SURVEYOR JP

**NOTE:**  
 SEE SHEET 1 OF 4 FOR SURVEY DETAILS OF SECTION 14.  
 SEE SHEET 2 OF 4 FOR SURVEY DETAILS OF SECTION 23.  
 SEE SHEET 3 OF 4 FOR SURVEY DETAILS OF SECTION 26.  
 SEE SHEET 4 OF 4 FOR SURVEY DETAILS OF SECTION 35.  
 SEE SEPARATE NOTES RECORDED IN CS FILE \*  
 FOR NARRATIVE, REFERENCE INFORMATION AND CORNER NOTES.

**BASIS OF BEARING:**  
 THE BASIS OF BEARING IS BASED ON A SOLAR OBSERVATION  
 PERFORMED IN CS #M116-32.

**LEGEND**

- ⊙ MONUMENTS FOUND AS NOTED.
- SET 3/4" X 30" IRON ROD WITH 2" ALUMINUM CAP MARKED AS NOTED.
- CORNER POSITION CALCULATED PER CS #M116-32.
- ( ) RECORD INFORMATION
- PROPERTY LINES FLAGGED AND BLAZED.
- (F) CORNER IDENTIFICATION FOR CORNER NOTES



SCALE 1" = 400'

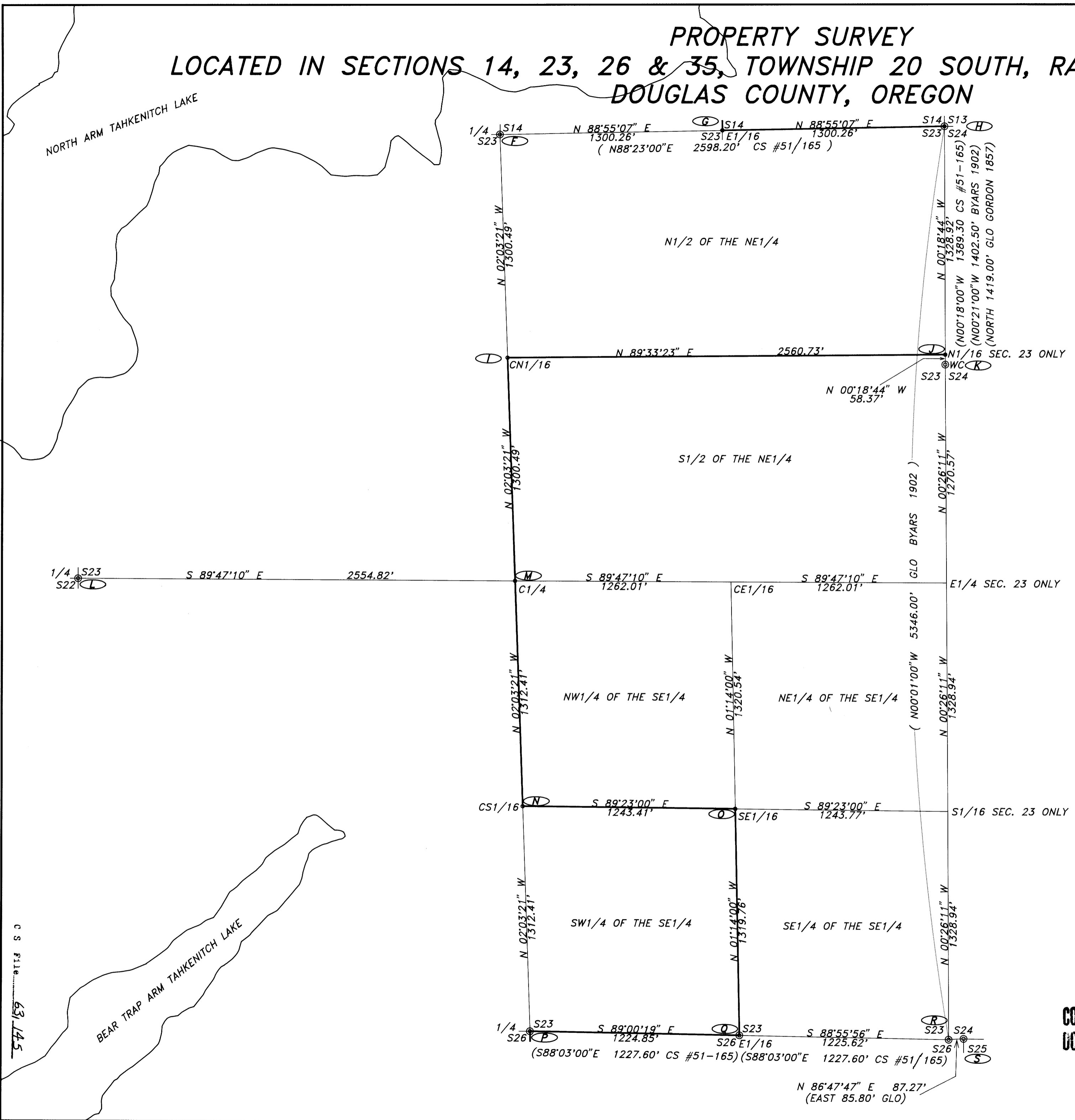
REGISTERED  
**PROFESSIONAL  
 LAND SURVEYOR**  
*Ronald E. Stuntzner*  
 OREGON  
 SEPTEMBER 21, 1977  
 RONALD E. STUNTZNER  
 1342  
 EXPIRES 12/31/94

*Stuntzner Engineering  
 & Forestry*

**ENGINEERING • LAND SURVEYING • FORESTRY  
 PLANNING • WATER RIGHTS**  
 705 South 4th St. Phone: (503) 267-2872  
 Post Office Box 118 Coos Bay, Oregon 97420 Fax: (503) 267-0588

Drawn By: JERRY ESTABROOK	Date: AUGUST 19, 1994
Checked By: TOM HOSHALL	Drawing No.: 94-12323
Designed By:	Revised:
Job Name: TAHKENITCH TREE FARM SURVEY Sheet 2 of 4	

**COUNTY SURVEYORS FILE DATA  
 DO NOT REMOVE FROM OFFICE**



CS FILE 63/145

Map File M.120-75 B