

1 SECTION CORNER 34, 35, 2, 3

FOUND : DOUGLAS CO. BRASS CAP, DATED 1965

- 28" W. FIR, N 22-3/4 E, 31.2' - CLOSED FACE (Rec. - N216, 31.3' - M107-26)
- 29" FIR STUB, S 25-3/4 E, 17.9' - VISIBLE SCRIBING (Rec. - S33 E, 17.9' - M107-26)
- 48" FIR STUMP, S 27-3/4 W, 44.2' (Rec. - S22 W - M107-26)
- 34" FIR, N 22 W, 10.1' (Rec. - N21 W, 9.0' - M107-26)

6 SOUTHEAST 1/16 CORNER SECTION 3

SET : 2" X 42" IRON PIPE WITH BRASS CAP

- 9" FIR, N 67 E, 11.6' - SCRIBED "SE1/16S3 BT"
- 8" FIR, S 67 W, 11.2' - SCRIBED "SE1/16S3 BT"

T22S R5W
SE1/16+ S3
PLS 1978
1993

2 1/4 CORNER 34 & 3

FOUND : 1" IRON PIPE WITH YELLOW PLASTIC CAP MKD. "WEYER CO"

- 72" FIR STUMP, N 7-1/2 E, 47.5'
- 21" FIR, S 1 W, 42.8' - VISIBLE SCRIBE
- 20" FIR, S 68-1/2 W, 60.8' - VISIBLE SCRIBE
- 20" FIR, N 39-3/4 W, 28.9' - VISIBLE SCRIBE

7 CENTER-SOUTH 1/16 CORNER SECTION 3

SET : 2" X 42" IRON PIPE WITH BRASS CAP

- 16" CEDAR, S 9 W, 12.5' - SCRIBED "CS1/16S3 BT"
- 11" FIR, N 82 W, 10.9' - SCRIBED "CS1/16S3 BT"

T22S R5W
S1/16 C S3
PLS 1978
1993

3 CENTER-EAST 1/16 CORNER SECTION 3

SET : 2" X 42" IRON PIPE WITH BRASS CAP

- 31" FIR, S 15 E, 13.8' - SCRIBED "CE1/16S3 BT"
- 18" FIR, S 42 W, 38.1' - SCRIBED "CE1/16S3 BT"

NOTE : 3/4" PIPE OF UNKNOWN ORIGIN BEARS
S 28°49'27" E, 35.15'

T22S R5W
E1/16
C S3
PLS 1978
1993

4 CENTER 1/4 CORNER SECTION 3

SET : 2" X 42" IRON PIPE WITH BRASS CAP

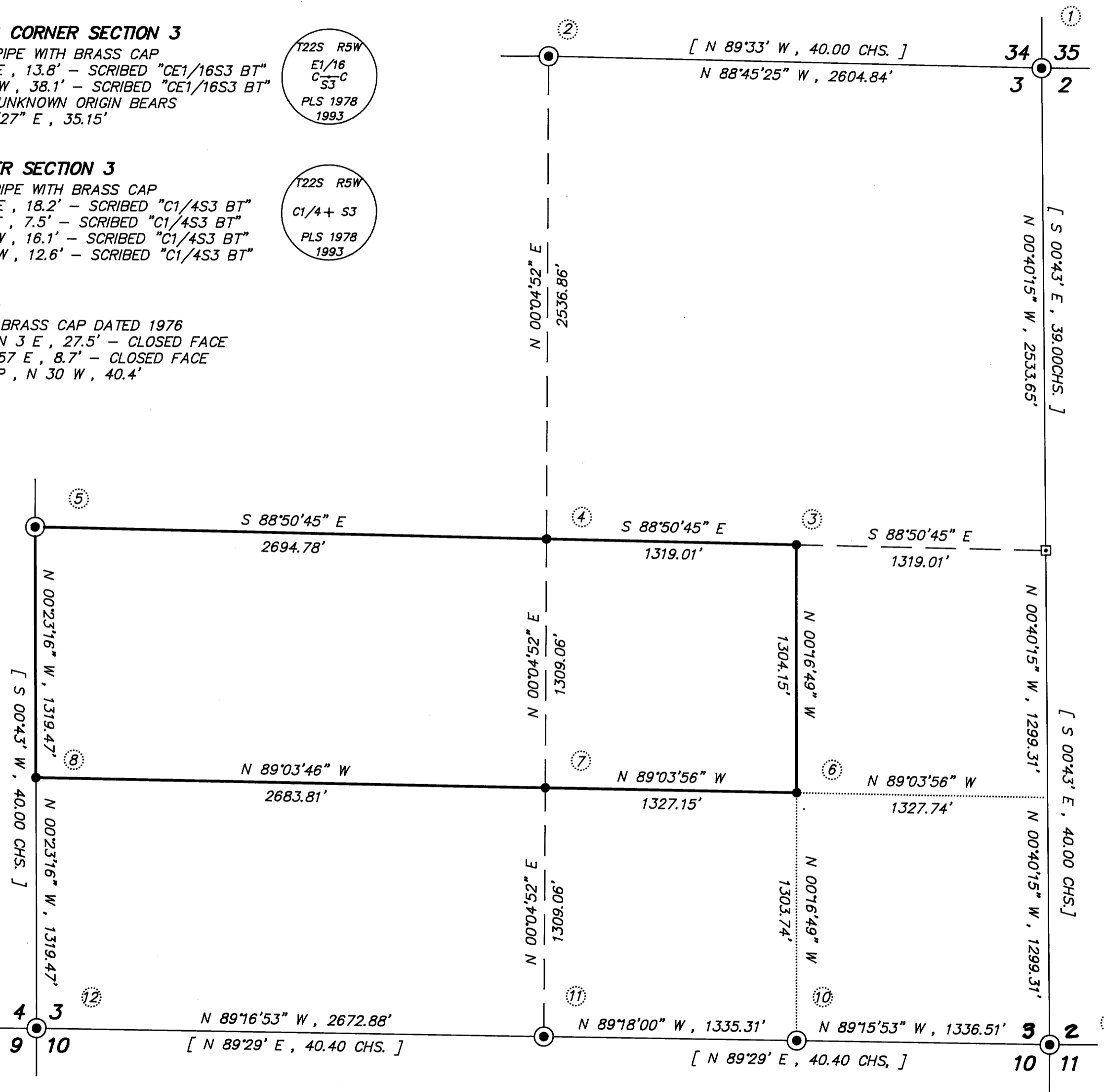
- 17" FIR, N 68 E, 18.2' - SCRIBED "C1/4S3 BT"
- 10" FIR, S 31 E, 7.5' - SCRIBED "C1/4S3 BT"
- 12" FIR, S 13 W, 16.1' - SCRIBED "C1/4S3 BT"
- 21" FIR, N 32 W, 12.6' - SCRIBED "C1/4S3 BT"

T22S R5W
C1/4+ S3
PLS 1978
1993

5 1/4 CORNER 3 & 4

FOUND : DOUGLAS CO. BRASS CAP DATED 1976

- 20" CEDAR, N 3 E, 27.5' - CLOSED FACE
- 20" OAK, S 57 E, 8.7' - CLOSED FACE
- 24" FIR STUMP, N 30 W, 40.4'



- NARRATIVE -

THIS SURVEY WAS MADE IN AUGUST AND SEPTEMBER, 1993 BY DANIEL W. BAKER OF BAKER AND ASSOCIATES, SURVEYORS. THE PURPOSE OF THIS SURVEY WAS TO LOCATE AND MARK SOME OF THE PROPERTY LINES OF THE LAND OWNED BY WEYERHAEUSER COMPANY IN SECTION 3, T22S, R5W, W.M.. A WILD T1000 THEOMAT WITH DISS E.D.M. AND A KERN K1S THEODOLITE WITH DM502 E.D.M. WERE USED TO PERFORM THIS SURVEY. BEARINGS WERE BASED ON A SOLAR OBSERVATION. THE NORTH, SOUTH AND WEST 1/4 CORNERS, THE NORTHEAST, SOUTHEAST, AND SOUTHWEST SECTION CORNERS AND THE EAST 1/16 CORNER ON THE SOUTH LINE WERE ALL FOUND AND USED FOR CONTROL. THE EAST 1/4 CORNER WAS NOT FOUND BUT ITS POSITION WAS DETERMINED (BUT NOT SET) BY SINGLE PROPORTION. A CLOSED RANDOM TRAVERSE WAS RUN NEAR THE PROPERTY LINES THAT WERE TO BE MARKED. OFFSETS FROM THE RANDOM TRAVERSE LINE TO THE TRUE PROPERTY LINE WERE CALCULATED AND USED TO DETERMINE THE POSITION OF THE TRUE PROPERTY LINE. THE TRUE PROPERTY LINE WAS MARKED IN THE FIELD BY BLAZING TREES (BLAZES NOTCHED AND PAINTED RED) ON BOTH SIDES OF THE TRUE LINE. ALL CORNERS SET IN THIS SURVEY WERE MONUMENTED WITH A 2" X 42" IRON PIPE WITH BRASS CAP MARKED AS NOTED ON THIS PLAT. FOR ALL BEARING TREES MARKED IN THIS SURVEY, THE DISTANCE WAS MEASURED FROM THE CORNER TO A "W" NAIL IN THE LOWER BLAZE AND THE BEARINGS ARE MAGNETIC, VARIATION 20'.

REGISTERED
PROFESSIONAL
LAND SURVEYOR

Daniel W. Baker
OREGON
JULY 16, 1982
DANIEL W. BAKER
1978

EXPIRES 12/31/93

8 SOUTH 1/16 CORNER 3 & 4

SET : 2" X 42" IRON PIPE WITH BRASS CAP

- 15" FIR, S 59 E, 32.4' - SCRIBED "S1/16S3 BT"
- 23" FIR, S 42 W, 54.7' - SCRIBED "S1/16S4 BT"

T22S R5W
S1/16
S4 S3
PLS 1978
1993



SCALE 1"=500'
BASIS OF BEARING: SOLAR OBSERVATION

LEGEND

- - CORNERS FOUND (AS NOTED)
- - CORNERS SET (2" X 42" IRON PIPE WITH BRASS CAP)
- - CALCULATED POINT (NOT SET)
- - PROPERTY LINE
- [] - RECORD DATA - BLM OR GLO

11 1/4 CORNER 3 & 10

FOUND : DOUGLAS COUNTY BRASS CAP DATED 1973

- 18" FIR STUMP, N 8-1/2 E, 4.9' - SCRIBE VISIBLE
- 11" FIR STUMP, S 64 E, 34.5' - SCRIBE VISIBLE
- 26" MADRONE, S 1 W, 13.2' - SCRIBE VISIBLE
- 16" MADRONE, N 35-3/4 W, 25.0'

9 SECTION CORNER 2, 3, 10, 11

FOUND : DOUGLAS COUNTY BRASS CAP DATED 1958

- 25" FIR, N 13 W, 21.2'
- 25" FIR STUMP, N 31 E, 40.2'
- 56" CEDAR STUMP, N 78 E, 17.2'
- 28" FIR, S 3 W, 54.2'
- 8" FIR, S 53 E, 61.5'

12 SECTION CORNER 3, 4, 9, 10

FOUND : HAINES "T" IRON

- 27" FIR STUMP, N 66 E, 4.5' - CUT BELOW SCRIBING
- 21" FIR, S 53 E, 42.5' - CLOSED FACE
- 10" MADRONE, S 22 W, 25.5' - B.L.M. TAG
- 24" FIR STUMP, N 22 W, 23.8' - CUT BELOW SCRIBING

10 EAST 1/16 CORNER 3 & 10

FOUND : 2" IRON PIPE (SEE M48-78)

- 10" FIR STUMP, S 48 E, 8.2' - SCRIBE VISIBLE

COUNTY SURVEYORS FILE DATA
DO NOT REMOVE FROM OFFICE

REVISED 11/30/93

SURVEY IN	
S 1/2 SECTION 3, T22S, R5W, W.M.	
DOUGLAS COUNTY, OREGON	
CLIENT: WEYERHAEUSER COMPANY	
DRAWN BY: DLP	BAKER AND ASSOCIATES, SURVEYORS
DATE: 9/15/93	1385 OAK STREET-SUITE 3 EUGENE, OREGON
FILE: \WEYCO\220503	(503) 343-7243