

FILED  
 FEB 18 1988  
 COUNTY SURVEYOR  
 DOUGLAS COUNTY, OREG.  
 1

1 NORTH 1/16 CORNER 14 & 15  
 FOUND: 1-1/4" IRON PIPE WITH BRASS CAP DATED 1972  
 18" FIR STUMP, N12-1/2E, 8.6' - SCRIBED VISIBLE  
 20" FIR, N46-1/4W, 20.9' - CLOSED FACE

2 NORTHEAST 1/16 CORNER SECTION 15  
 SET: 2" X 42" IRON PIPE WITH BRASS CAP  
 17" FIR, S87E, 5.9' (SCRIBED "NE 1/16 S15 BT")  
 23" FIR, N12-1/2W, 17.4' (SCRIBED "NE 1/16 S15 BT")

3 1/4 CORNER 14 & 15  
 FOUND: 1-1/4" IRON PIPE WITH BRASS CAP DATED 1972  
 38" FIR STUMP, N68-1/4E, 47.0' - CLOSED FACE  
 20" FIR, S87-1/4E, 44.3' - CLOSED FACE  
 52" FIR STUMP, N14-3/4W, 34.3' - SCRIBING VISIBLE

4 CENTER-EAST 1/16 CORNER SECTION 15  
 SET: 2" X 42" IRON PIPE WITH BRASS CAP  
 18" WHITE FIR, S82E, 2.8' (SCRIBED "CE 1/16 S15 BT")  
 20" WHITE FIR, N9W, 4.0' (SCRIBED "CE 1/16 S15 BT")

5 CENTER 1/4 CORNER SECTION 15  
 SET: 2" X 42" IRON PIPE WITH BRASS CAP  
 23" FIR, N21E, 91.0' (SCRIBED "C1/4 S15 BT")  
 25" FIR, N54W, 37.9' (SCRIBED "C1/4 S15 BT")

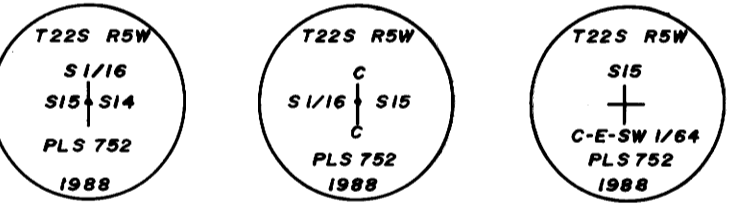
6 CENTER-EAST-WEST 1/64 CORNER SECTION 15  
 SET: 2" X 41" IRON PIPE WITH BRASS CAP  
 13" FIR, N79E, 27.8' (SCRIBED "1/64 S15 BT")  
 7" FIR, N22W, 23.4' (SCRIBED "1/64 S15 BT")

7 1/4 CORNER 15 & 16  
 FOUND: 1" IRON PIPE, 21" ABOVE GND.  
 42" FIR STUMP, S79-3/4E, 21.1'  
 26" WHITE FIR, S26-3/4E, 21.2' - CLOSED FACE  
 48" FIR STUMP, S47-1/2W, 27.3'  
 34" FIR STUMP, N65W, 29.4'

8 SOUTH 1/16 CORNER 14 & 15  
 SET: 2" X 42" IRON PIPE WITH BRASS CAP  
 17" WHITE FIR, N5E, 11.7' (SCRIBED "S1/16 S14 BT")  
 19" FIR, N67W, 40.2' (SCRIBED "S1/16 S14 BT")

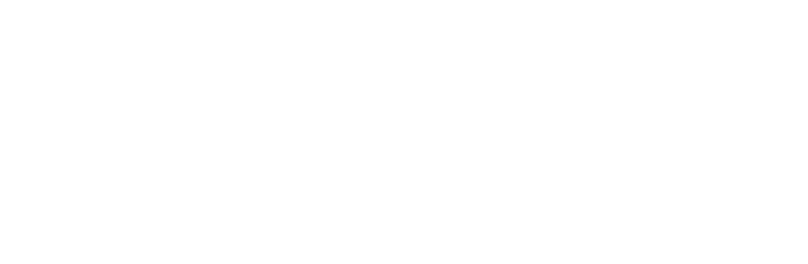
9 CENTER-SOUTH 1/16 CORNER SECTION 15  
 SET: 2" X 41" IRON PIPE WITH BRASS CAP  
 14" FIR, N42E, 43.8' (SCRIBED "CS 1/16 S15 BT")  
 11" FIR, N32W, 41.6' (SCRIBED "CS 1/16 S15 BT")

10 CENTER-EAST-SOUTHWEST 1/64 CORNER SEC. 15  
 SET: 2" X 42" IRON PIPE WITH BRASS CAP  
 15" FIR, S73E, 15.0' (SCRIBED "1/64 S15 BT")  
 25" FIR, N9W, 33.1' (SCRIBED "1/64 S15 BT")



16 15  
 21 22  
 589°34'32"W, 2641.90'  
 (S89°19'W, 40.10 CHS.)  
 N88°09'11"W, 1315.01'  
 N88°09'11"W, 1315.01'  
 (S89°34'W, 39.90 CHS.)  
 N88°09'11"W, 2630.02'  
 (S89°34'W, 39.90 CHS.)

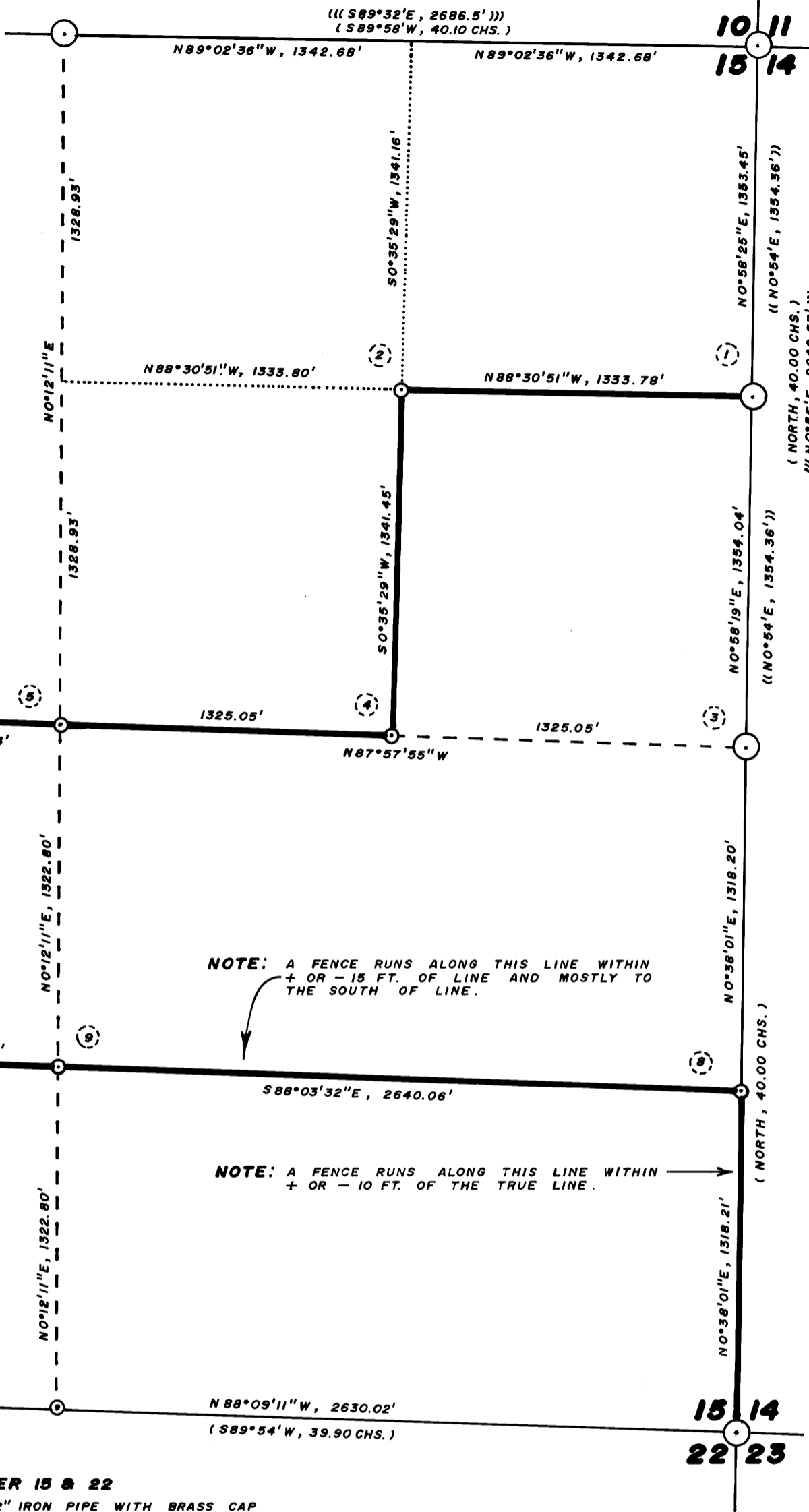
1/4 CORNER 16 & 21  
 FOUND: 1" IRON PIPE IN MOUND OF STONE  
 12" OAK, N5E, 19.3' (CLOSED FACE)  
 17" OAK, S80W, 45.7' (CLOSED FACE)



SECTION CORNER 27, 28, 33, 34  
 FOUND: 1-1/4" IRON PIPE WITH DOUGLAS CO. BRASS CAP DATED 1958  
 29" MAPLE, N33-1/2W, 58.5' (CLOSED FACE)  
 14" OAK, S54-1/2W, 108.0' (CLOSED FACE)  
 POWER POLE, N80-3/4E, 42.0' (POLE NO. 5-61)

1/4 CORNER 10 & 15  
 FOUND: 1" IRON PIPE  
 16" FIR, N34E, 23.9' (CLOSED FACE)  
 B.T. AT S12W NOW BLOWN DOWN  
 MARKED NEW: 19" FIR, S44-1/2E, 44.6' - SCRIBED "1/4 S15 BT"

SECTION CORNER 10, 11, 14, 15  
 FOUND: 1-1/4" IRON PIPE WITH BRASS CAP DATED 1972  
 38" FIR, N72-1/2E, 60.8' - CLOSED FACE  
 36" FIR STUMP, S27-1/4E, 50.8' - CLOSED FACE  
 32" FIR, S27-1/2W, 42.7' (CLOSED FACE)  
 38" FIR STUMP, N7W, 3.8'  
 30" FIR, N26E, 25.5' (CLOSED FACE)



NOTE: A FENCE RUNS ALONG THIS LINE WITHIN + OR - 15 FT. OF LINE AND MOSTLY TO THE SOUTH OF LINE.

NOTE: A FENCE RUNS ALONG THIS LINE WITHIN + OR - 10 FT. OF THE TRUE LINE.

1/4 CORNER 15 & 22  
 SET: 2" X 42" IRON PIPE WITH BRASS CAP  
 25" FIR, N27E, 74.8' - SCRIBED "1/4 S15 BT"  
 34" OAK, S83E, 142.1' - SCRIBED "1/4 S22 BT"  
 NOTE: DISTANCES ARE CENTER MEASURE, BEARINGS SOLAR

SECTION CORNER 15, 16, 21, 22  
 SET: 2" X 42" IRON PIPE WITH BRASS CAP  
 10" OAK, EAST, 63.3' - SCRIBED "T22S R5W S15 BT"  
 13" FIR, S12-3/4E, 240.3' - SCRIBED "T22S R5W S22 BT"  
 15" MAPLE, S13-1/4W, 218.2' - SCRIBED "T22S R5W S21 BT"  
 12" OAK, N27-1/2W, 89.4' - SCRIBED "T22S R5W S16 BT"

SECTION CORNER 14, 15, 22, 23  
 FOUND: 2-1/2" IRON PIPE WITH B.L.M. BRASS CAP DATED 1973  
 2" X 3/4" 1" ABOVE GROUND STONE AND HAINES "T" BAR  
 ALONGSIDE  
 48" OAK, N14-1/2E, 15.1' (SCRIBING VISIBLE ON OPENED BLAZE)  
 30" FIR, N74E, 24.6' (CLOSED FACE)  
 14" FIR, S35-1/4E, 17.1' (CLOSED FACE)  
 20" FIR, S23-1/4W, 30.9' (CLOSED FACE)  
 21" FIR, N8-1/2W, 23.3' (CLOSED FACE)

**- NARRATIVE -**

THIS SURVEY WAS MADE IN DECEMBER, 1987 AND JANUARY, 1988 BY DONALD L. PEEL OF PEEL BAKER LAND SURVEYING INC., 1262 LAWRENCE STREET - SUITE 4, EUGENE, OREGON. THE PURPOSE OF THIS SURVEY WAS TO LOCATE AND MARK THE PROPERTY LINES OF THE LAND OWNED BY WEYERHAEUSER COMPANY IN SECTION 15, T22S, R5W, W.M. A WILD T1000 THEOMAT AND DISSE E.D.M. WERE USED TO PERFORM THIS SURVEY. CLOSED RANDOM TRAVERSES WERE RAN BETWEEN FOUND CORNERS FOR CONTROL. BEARINGS WERE BASED ON A SOLAR OBSERVATION (AS PER MY EARLIER SURVEY IN SEC. 13, C.S. NO. M105-27). A CLOSED RANDOM TRAVERSE WAS RUN AS CLOSE AS POSSIBLE TO THE PROPERTY LINE TO BE MARKED. OFFSETS FROM THE RANDOM TRAVERSE LINE TO THE TRUE PROPERTY LINE WERE CALCULATED AND USED TO DETERMINE THE POSITION OF THE TRUE PROPERTY LINE. THE TRUE PROPERTY LINE WAS MARKED IN THE FIELD BY BLAZING TREES (BLAZES NOTCHED AND PAINTED RED) ON BOTH SIDES OF THE TRUE LINE. THE SOUTH 1/4 CORNER AND THE SOUTHWEST CORNER WERE SEARCHED FOR BUT NOT FOUND. SAID SOUTHWEST CORNER WAS REESTABLISHED BY THE DOUBLE PROPORTION METHOD, USING THE SOUTHEAST CORNER, THE WEST 1/4 CORNER, THE 1/4 CORNER BETWEEN SECTIONS 16 AND 21 AND THE SECTION CORNER COMMON TO SECTIONS 27, 28, 33, 34 (TWO MILES SOUTH) AS CONTROL. I ALSO CALCULATED THE DOUBLE PROPORTION POSITION OF SAID CORNER BY USING THE POSITION OF SECTION CORNER 21, 22, 27, 28, AS DETERMINED FROM CALLS MADE ON THE EAST LINE OF THE JESSE APPELATEG D.L.C. NO. 38, FOR CONTROL. I FOUND THAT THE FORMER METHOD MORE CLOSELY CONFORMS TO THE 1855 G.L.O. RECORD AND THUS USED SAID METHOD. AFTER THE POSITION FOR THE SOUTHWEST CORNER WAS DETERMINED THE SOUTH 1/4 CORNER WAS SET AT MIDPOINT BETWEEN THE SOUTHWEST AND SOUTHEAST SECTION CORNERS AS PER THE 1855 G.L.O. RECORD AND NOT AT PROPORTIONATE 39.26 CHAINS AS PER THE 1856 MATTHEW LYONS D.L.C. NO. 43 RETRACEMENT, AS ONCE AGAIN THE FORMER POSITION MORE CLOSELY CONFORMS TO RECORD (1855 G.L.O.). THE CENTER 1/4 CORNER WAS SET AT THE POINT OF INTERSECTION OF THE NORTH-SOUTH AND EAST-WEST CENTERLINES. THE NORTHEAST 1/16 CORNER WAS SET AT THE POINT OF INTERSECTION OF THE NORTH-SOUTH AND EAST-WEST CENTERLINES OF THE NORTHEAST QUARTER. THE POSITION FOR THE SOUTHWEST 1/16 CORNER WAS DETERMINED (BUT NOT SET) AT THE POINT OF INTERSECTION OF THE NORTH-SOUTH AND EAST-WEST CENTERLINES OF THE SOUTHWEST QUARTER. THE REMAINING CORNERS SET IN THIS SURVEY WERE SET AT MIDPOINTS. ALL CORNERS SET IN THIS SURVEY WERE MONUMENTED AS SHOWN ON THIS PLAT. FOR ALL BEARING TREES MARKED IN THIS SURVEY, UNLESS OTHERWISE NOTED, DISTANCES WERE MEASURED TO A "W" NAIL IN THE LOWER BLAZE AND BEARINGS ARE MAGNETIC, VAR. 20°.

REGISTERED  
 PROFESSIONAL  
 LAND SURVEYOR  
 Donald L. Peel  
 OREGON  
 JULY 6, 1950  
 DONALD L. PEEL  
 752

BASIS OF BEARING: SOLAR OBSERVATION (SEE NARRATIVE)  
 SCALE: 1" = 500'

- CORNERS FOUND
- CORNERS SET THIS SURVEY
- PROPERTY LINE BLAZED
- ( ) RECORD DATA G.L.O. 1855
- (( )) RECORD DATA MAP FILE M49-12
- (( ( ))) RECORD DATA C.S. FILE R.M. 1-40

**SURVEY IN**  
**NE 1/4 & SOUTH 1/2 SEC. 15, T22S, R5W, W.M.**  
**DOUGLAS COUNTY, OREGON**  
 FOR  
**WEYERHAEUSER COMPANY**  
 BY  
**PEEL BAKER LAND SURVEYING INC.**  
 JANUARY 22, 1988

COUNTY SURVEYORS FILE DATA  
 DO NOT REMOVE FROM OFFICE

MAP FILE M105-54

M105-54