

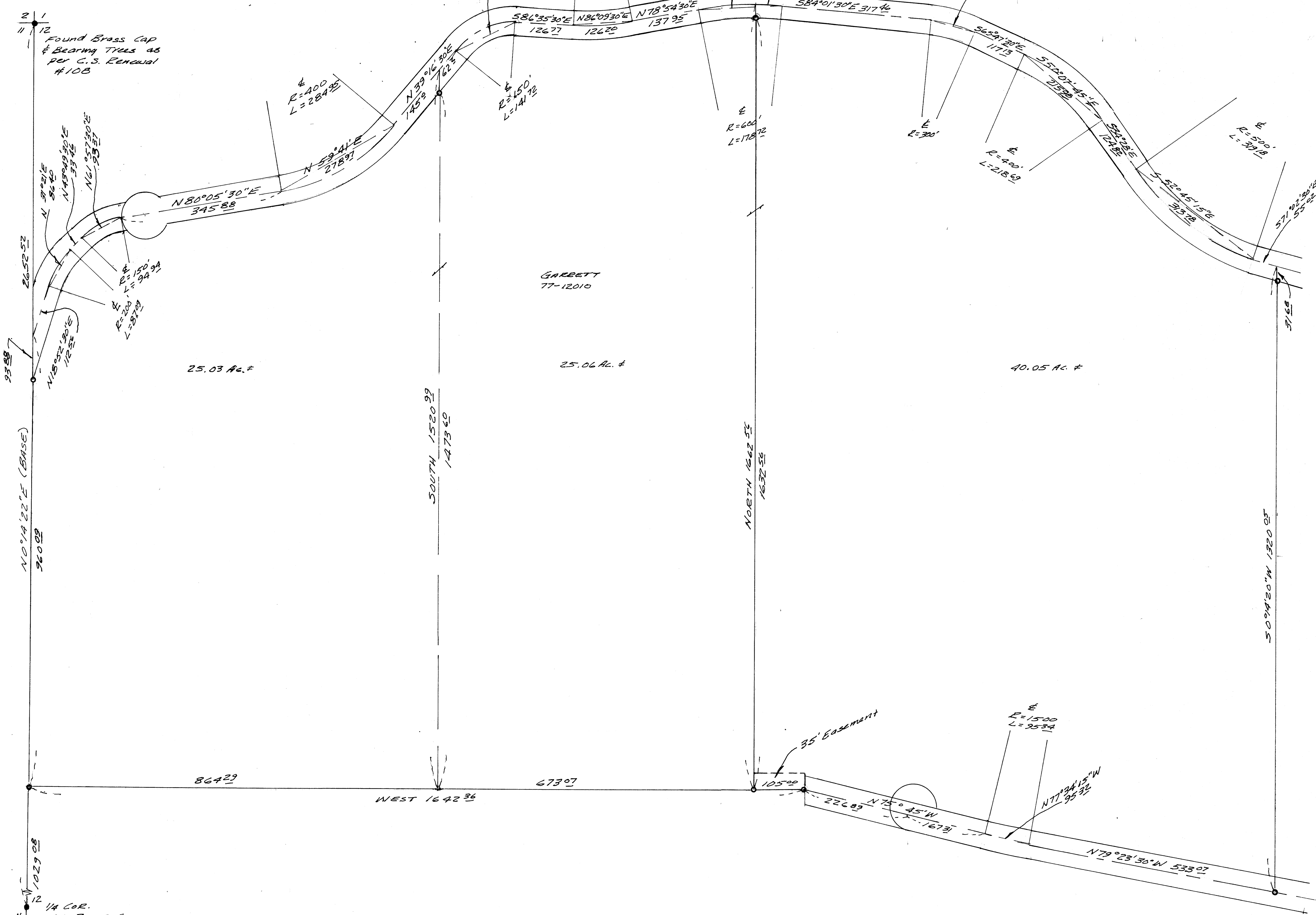
COUNTY SURVEYORS FILE DATA
DO NOT REMOVE FROM OFFICE

SURVEY FOR DEED DESCRIPTION
IN SECTION 12, T.24S., R. 6 W.W.M.
FOR MARK GARRETT
BY BRUCE ROGERS
OCT., 1978
1"=100'

BRUCE R. ROGERS
JULY 10, 1964
No. 660

FILED
RECEIVED
NOV 22 1978
COUNTY SURVEYOR
DOUGLAS COUNTY, ORE.

0 - SET 5/8" IRON ROD



Found Brass Cap
& Bearing TIES as
per C.S. Renewal
#108

GARRETT
77-12010

25.03 Ac. ±

25.06 Ac. ±

40.05 Ac. ±

N 0°14'22"E (BASE)
360.09

SOUTH 1520.99
1475.60

NORTH 1662.55
1637.55

S 0°04'50"W 1520.05

864.29

WEST 1642.36

673.07

105.00

1/4 COR.
Ed. Brass Cap
& Bearing TIES
as per C.S. Renewal #106
#105 8/11/72
JR

COUNTY SURVEYORS FILE DATA
DO NOT REMOVE FROM OFFICE