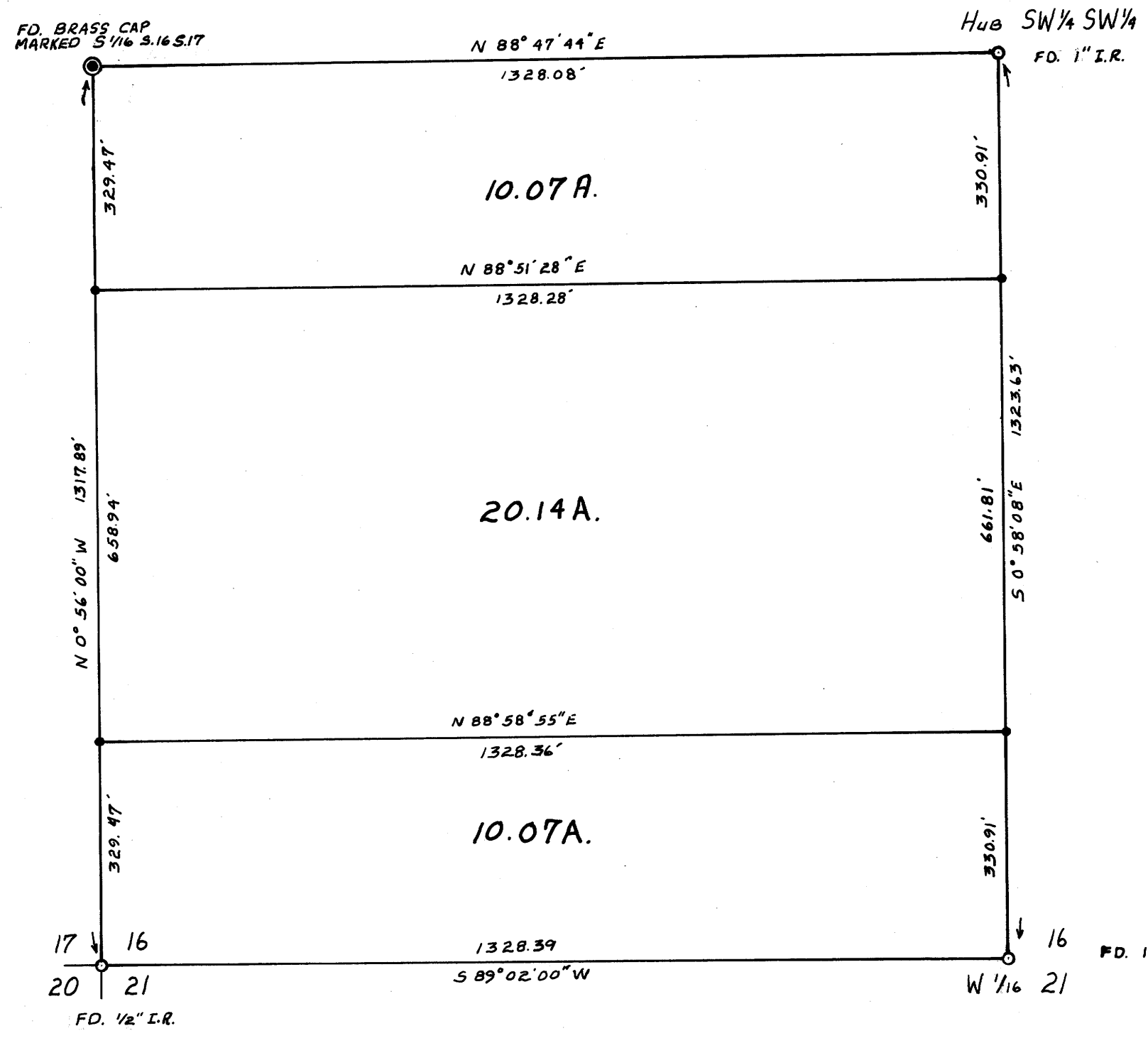


FILED  
RECEIVED

JAN 24 1973

COUNTY SURVEYOR  
DOUGLAS COUNTY, ORE.

III



**SURVEY TO SUBDIVIDE THE SW 1/4 SW 1/4  
IN SEC. 16, T. 26 S., R. 6 W., W. M.  
SURVEYED FOR DON FLYNN  
SURVEYED BY R. H. GEE - JAN. 1973  
SCALE 1" = 200'**

• DENOTES 5/8" I.R. SET

BEARINGS BASED ON BAUGHMAN/  
ACKARET INC. MAP C.S. #55-70

**COUNTY SURVEYORS FILE DATA  
DO NOT REMOVE FROM OFFICE**

