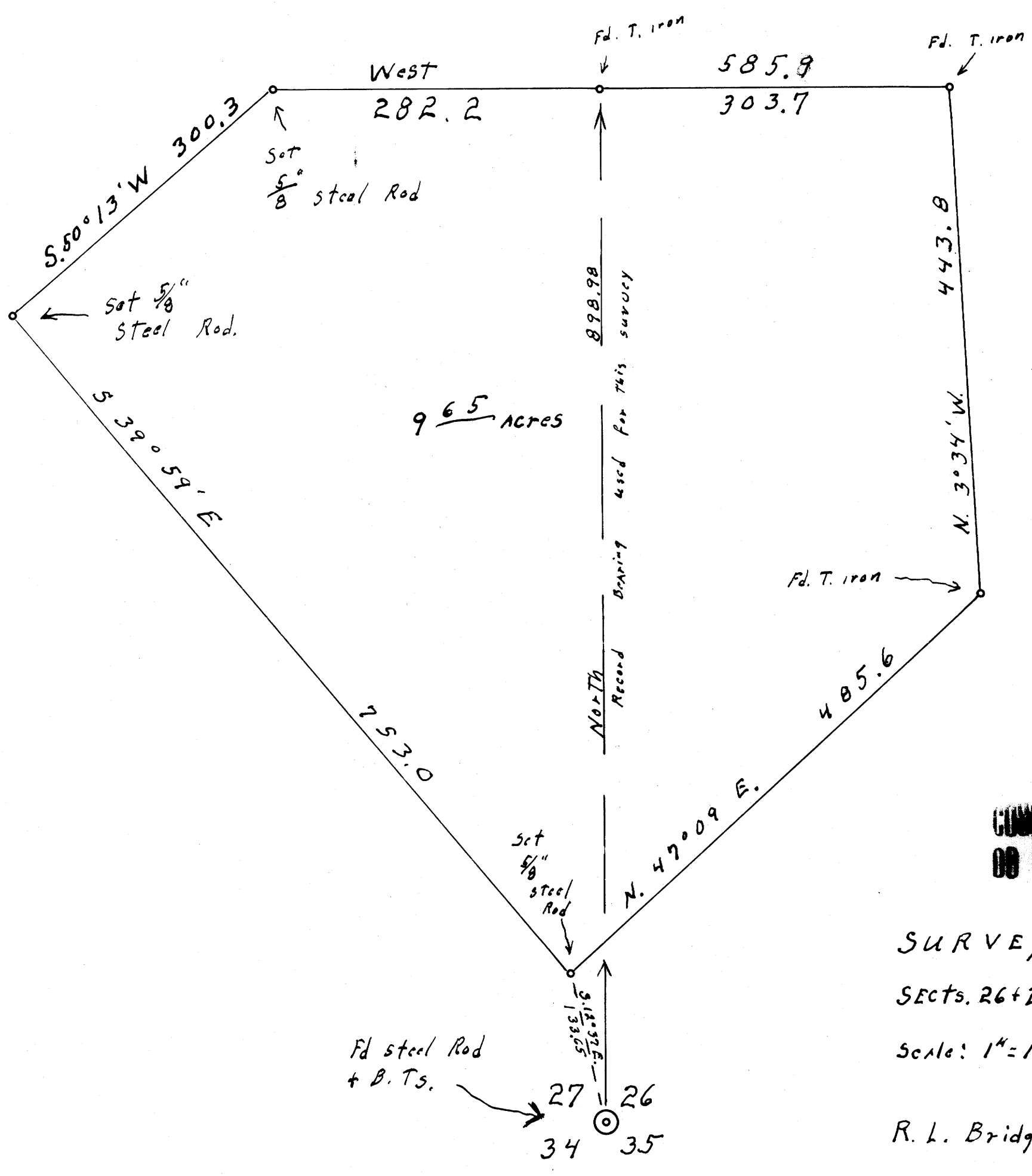


W. N. Haines

DEC 12 1968

COUNTY SURVEYOR
DRAIN, OREGON



COUNTY SURVEYORS FILE ONLY
DO NOT REMOVE FROM OFFICE

SURVEY FOR DEED DESCRIPTION
SECTS. 26+27 T. 21 S., R. 5 W. W.M.
Scale: 1" = 100' Dec. 12, 1968
for
R. L. Bridges Drain, Oregon.

REGISTERED
OREGON
LAND SURVEYOR
Wilford N. Haines
MAY 7, 1948
WILFORD N. HAINES
239