

COUNTY SURVEYORS FILE DATA
DO NOT REMOVE FROM OFFICE

FILED *L.L.*
RECEIVED

FEB 27 1963

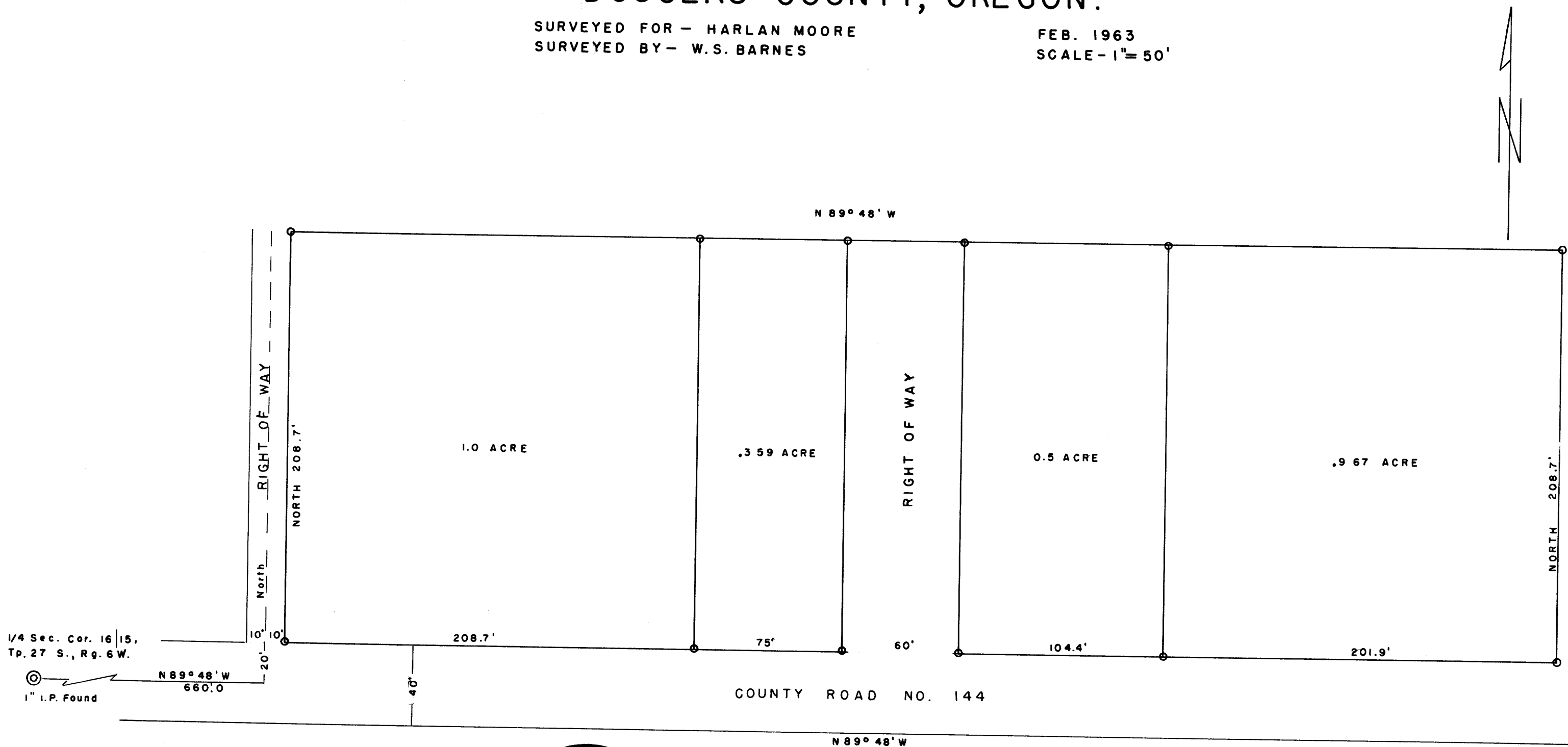
COUNTY SURVEYOR
DOUGLAS COUNTY, ORE.

MAP OF SURVEY TO ESTABLISH PROPERTY CORNERS, SW 1/4, of NW 1/4, SECTION 15, TWP. 27 S., RG. 6 W. W.M., DOUGLAS COUNTY, OREGON.

SURVEYED FOR - HARLAN MOORE
SURVEYED BY - W.S. BARNES

FEB. 1963
SCALE - 1" = 50'

MAP FILE M 24-65



Note: Base of Bearings taken from Map File No. M 18-68A,
Douglas County Surveyor's Office.
Legend: ⊙ = 5/8" Iron Rod

M 24-65