

COUNTY SURVEYORS FILE NO. DO NOT REMOVE FROM

R. Bank, S. Umpqua River → S. 83° 42' E. 359.4'

N. 0° 05' E. 604.7'

S. 0° 15' E. 558.9'

Scale, 1" = 100 ft.

S. 88° 52' W. 368.6'

PROPOSED STREET (40')

R. Bank of S. Umpqua R. → S. 83° 42' E. 359.4'

N. 0° 05' E. 604.7'

ROY BELLOWS' TRACT

N. 88° 52' E.

S. 88° 52' W. 368.6'

PROPOSED STREET, 40' WD.

Roseburg High School Tract.

Laid out street 40' wd.

UMPQUA AVE. 40' WD.

200'

115'

105'

110'

110'

110'

110'

110'

110'

110'

110'

110'

110'

110'

110'

110'

110'

110'

110'

110'

110'

110'

110'

110'

110'

110'

110'

110'

110'

110'

110'

110'

110'

110'

110'

Above distances taken from metes & bounds deed descriptions

Total Dist. S. 0° 23' W. 980.1'

N. 0° 05' E. 1624.7'

980' % above Metes & Bounds deed desc.

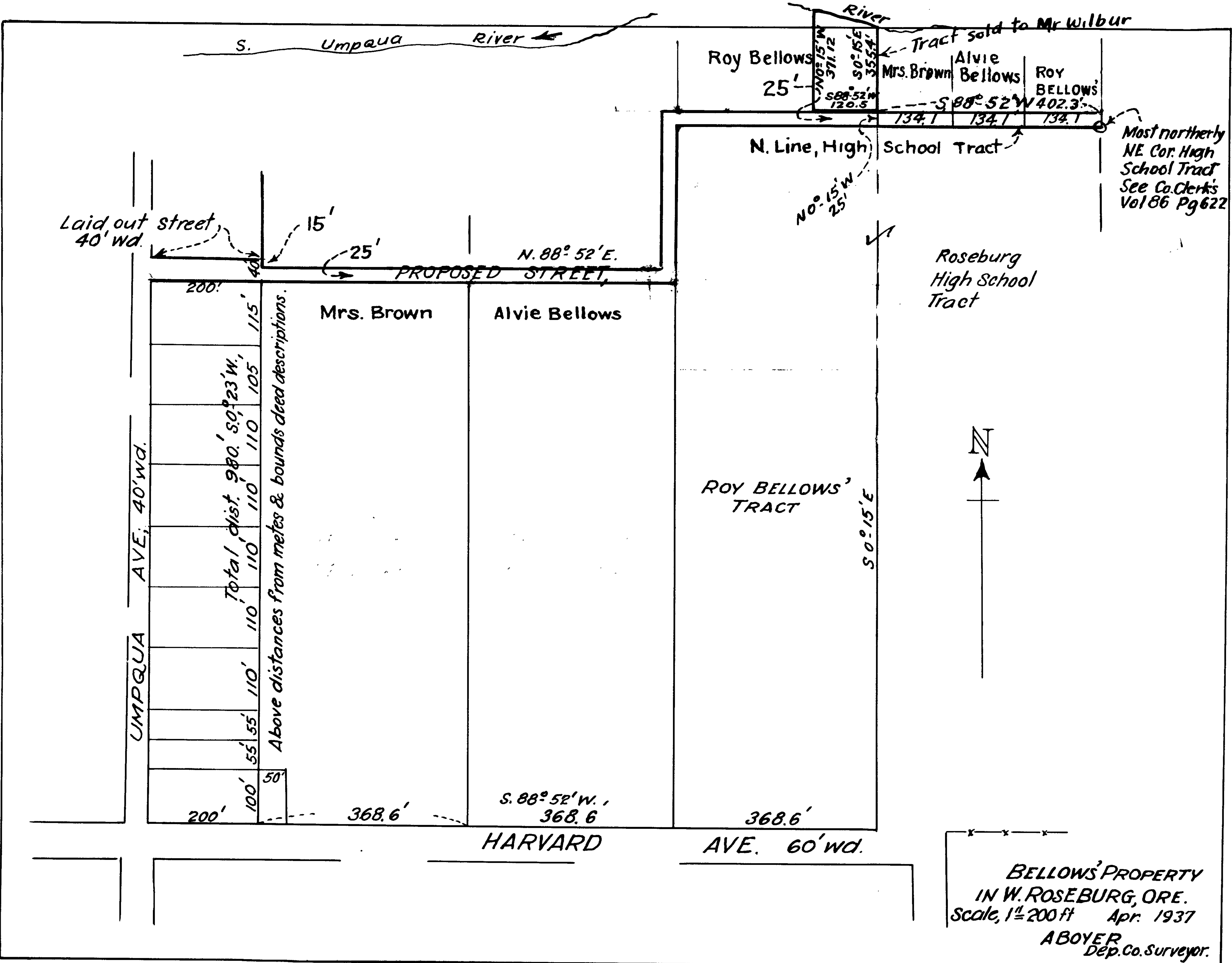
S. 0° 15' E. 980' % Metes & Bounds Deed desc.

1578.9'



ROY BELLOWS' PROPERTY IN W. ROSEBURG, ORE. Scale, 1" = 200 ft Apr. 1937 A. BOYER Dep. Co. Surv'r.

HARVARD AVE. 60' WD



S. Umpqua River

Roy Bellows 25'
 Mrs. Brown
 Alvie Bellows
 Roy BELLows
 Tract sold to Mr Wilbur

Most northerly
 NE Cor. High
 School Tract
 See Co. Clerk's
 Vol 86 Pg 622

Laid out street
 40' wd.

15'
 25'
 N. 88° 52' E.
 PROPOSED STREET

200'	Above distances from metes & bounds deed descriptions. Total dist. 980.50' 23' W.	Mrs. Brown Alvie Bellows
115'		
105'		
110'		
110'		
110'		
110'		
110'		
55'		
55'		
200'	50'	368.6'

