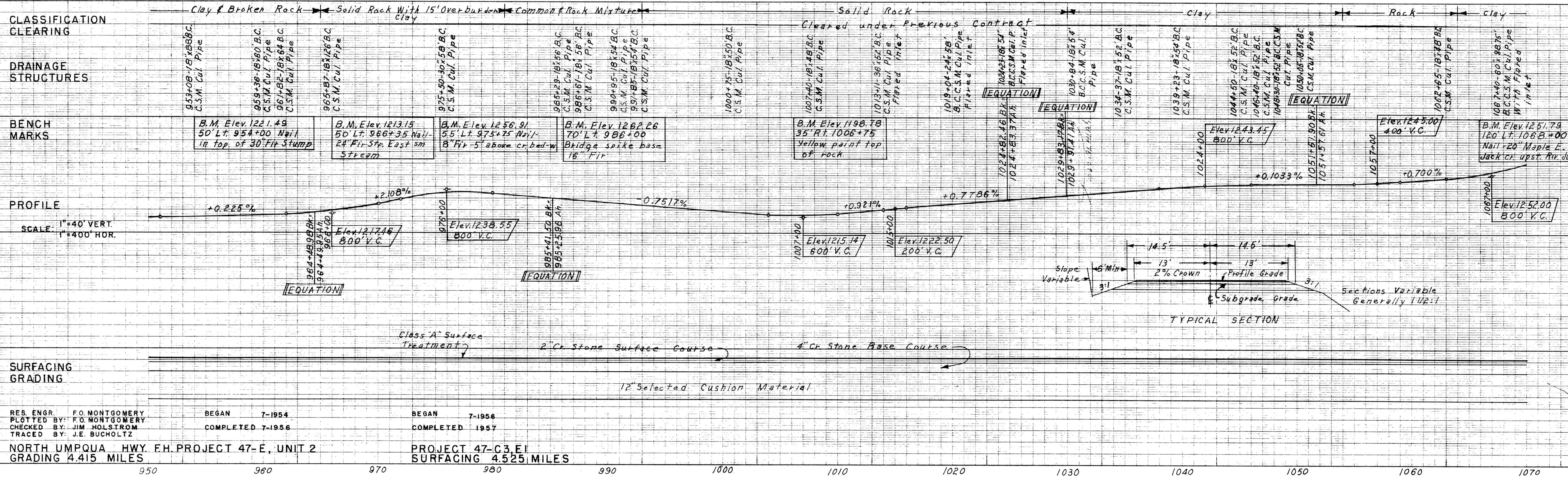
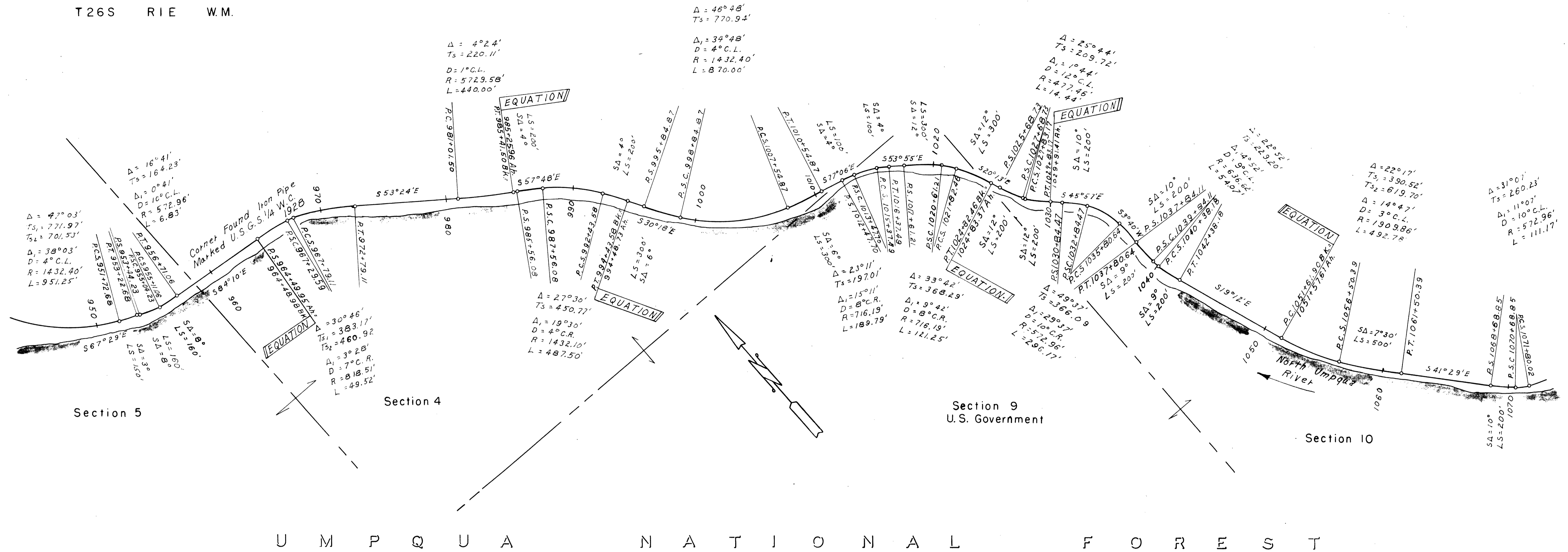


DOUGLAS COUNTY

T26S R1E W.M.



RES. ENGR. F.O. MONTGOMERY
 PLOTTED BY: F.O. MONTGOMERY
 CHECKED BY: JIM HOLSTROM
 TRACED BY: J.E. BUCHOLTZ

BEGAN 7-1954
 COMPLETED 7-1956

NORTH UMPQUA HWY. E.H. PROJECT 47-E, UNIT 2
 GRADING 4.415 MILES

BEGAN 7-1956
 COMPLETED 1957

PROJECT 47-C3.E1
 SURFACING 4.525 MILES

950 960 970 980 990 1000 1010 1020 1030 1040 1050 1060 1070