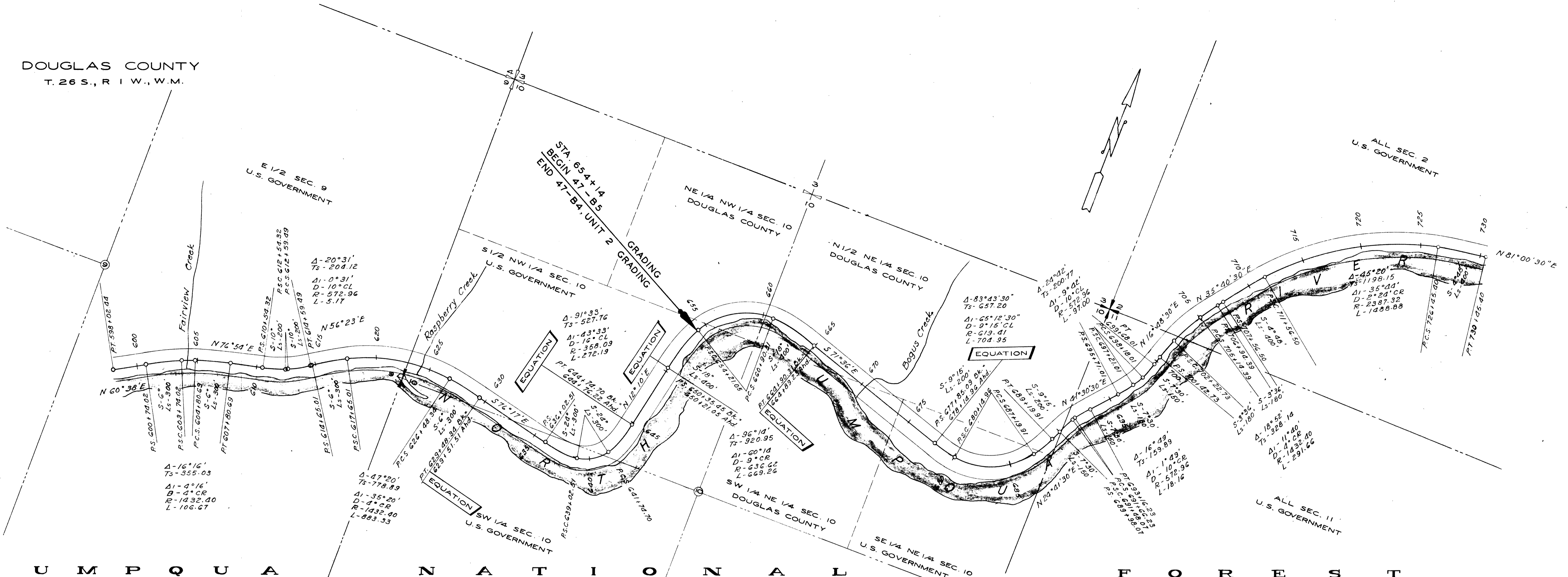
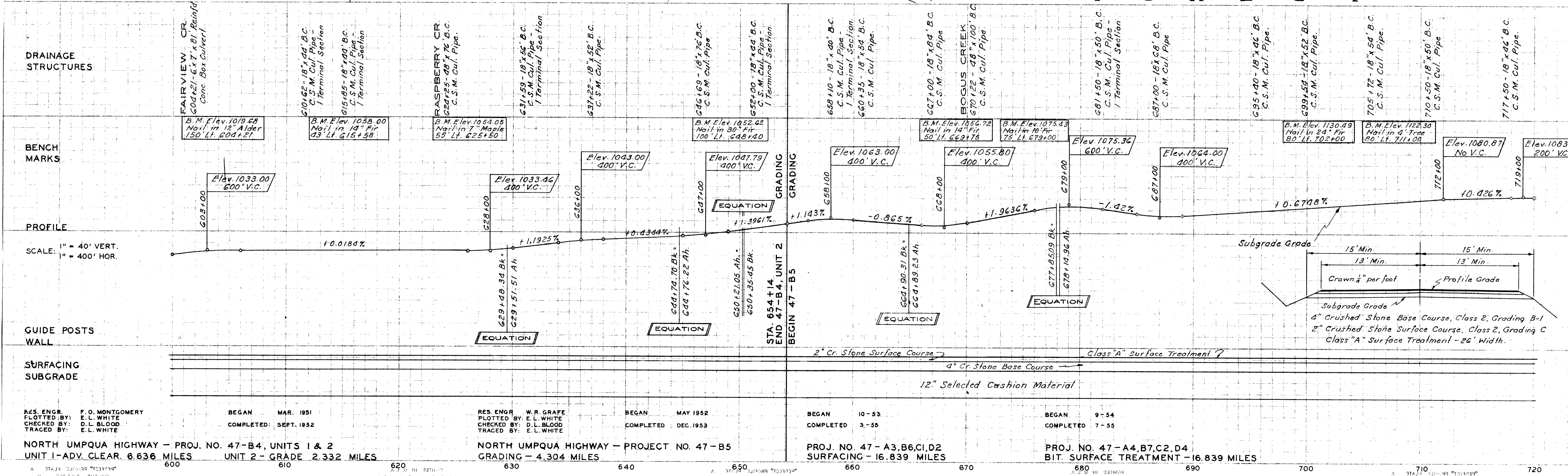


DOUGLAS COUNTY  
T. 26 S., R. 1 W., W.M.



U M P Q U A N A T I O N A L F O R E S T



RES. ENGR. F. O. MONTGOMERY  
PLOTTED BY: E. L. WHITE  
CHECKED BY: D. L. BLOOD  
TRACED BY: E. L. WHITE

BEGAN MAR. 1951  
COMPLETED SEPT. 1952

RES. ENGR. W. R. GRAPE  
PLOTTED BY: E. L. WHITE  
CHECKED BY: D. L. BLOOD  
TRACED BY: E. L. WHITE

BEGAN MAY 1952  
COMPLETED DEC. 1953

BEGAN 10-53  
COMPLETED 3-55

BEGAN 9-54  
COMPLETED 7-55

NORTH UMPQUA HIGHWAY - PROJ. NO. 47-B4, UNITS 1 & 2  
UNIT 1-ADV. CLEAR. 6.636 MILES UNIT 2- GRADE 2.332 MILES

NORTH UMPQUA HIGHWAY - PROJECT NO. 47-B5  
GRADING - 4.304 MILES

PROJ. NO. 47-A3,B6,C1,D2  
SURFACING - 16.839 MILES

PROJ. NO. 47-A4,B7,C2,D4  
BIT. SURFACE TREATMENT - 16.839 MILES