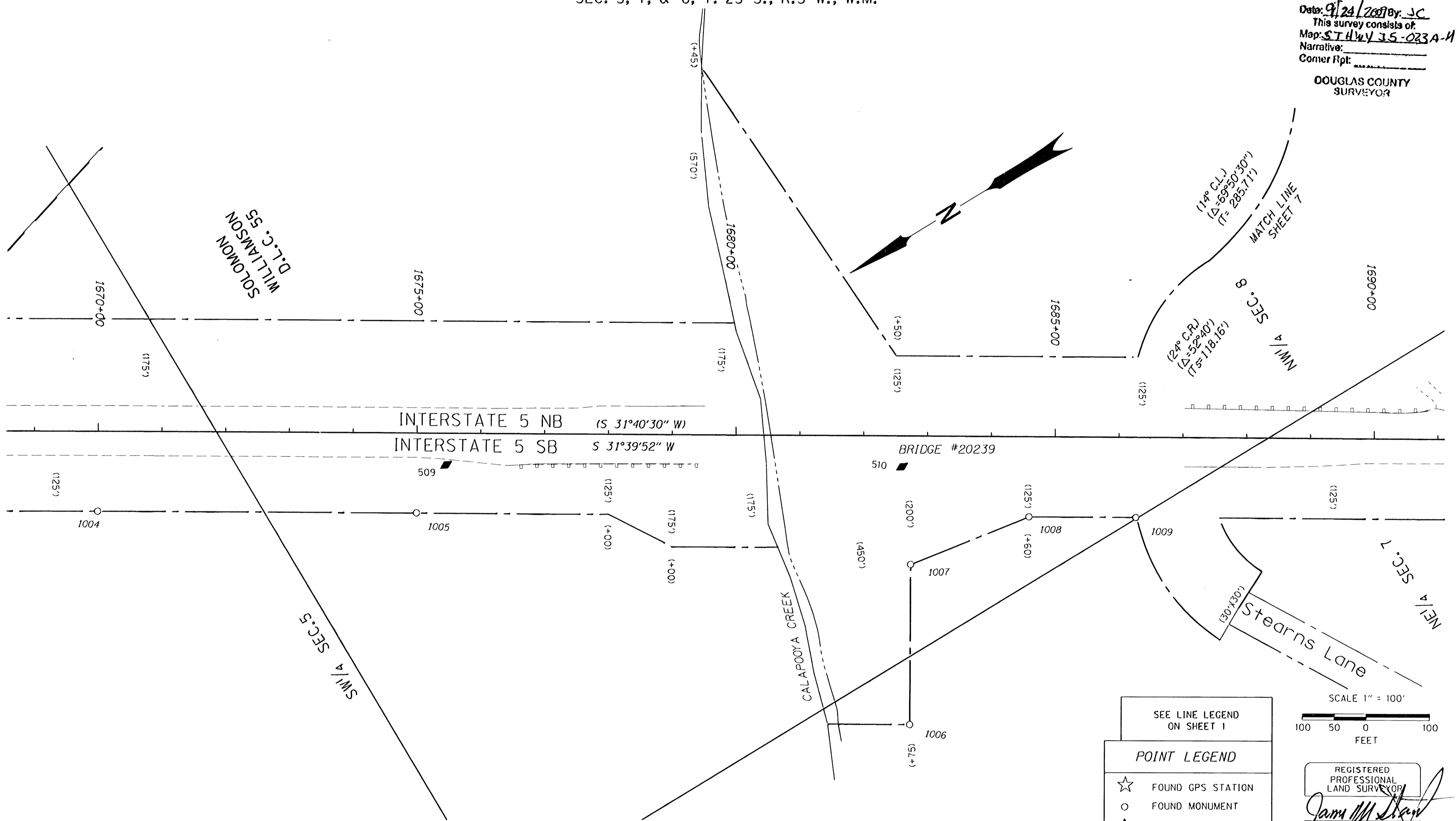


SEC. 5, 7, & 8, T. 25 S., R.5 W., W.M.

FILED
 Date: 9/24/2009 By: JC
 This survey consists of:
 Map: ST HWY 15-023A-H
 Narrative:
 Corner Rpt: _____

DOUGLAS COUNTY
 SURVEYOR

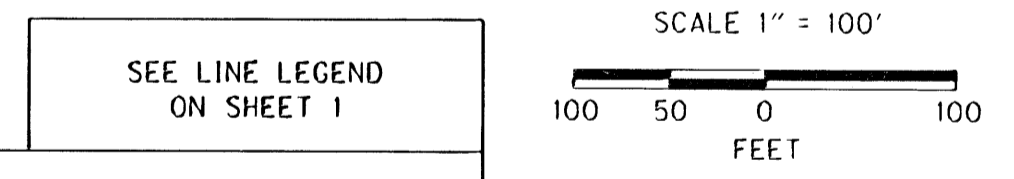


CONTROL MONUMENTS NOTE: OFFSETS WITH A - (MINUS) ARE LEFT, WITHOUT ARE RIGHT

PT. NO.	LDP NORTHING	LDP EASTING	ELEV.	STATION	OFFSET	DATE	DESCRIPTION
509	850770.792	4171478.911	0.00	1875+45.45	49.48	12/18/08	SET 5/8" IRON REBAR 30" LONG WITH 1 1/2" BRASS CAP STAMPED "ODOT CONTROL 509" 0.1' BELOW SURFACE
510	850181.860	4171108.144	0.00	1682+59.94	47.94	12/18/08	SET 1" BRASS PLUG STAMPED "ODOT 510" ON TOP OF THE SW CORNER ABUTMENT OF THE CALAPOOYA CREEK BRIDGE

RECOVERED MONUMENTS NOTE: OFFSETS WITH A - (MINUS) ARE LEFT, WITHOUT ARE RIGHT YPC= YELLOW PLASTIC CAP RPC= RED PLASTIC CAP PC=PLASTIC CAP

PT. NO.	LDP NORTHING	LDP EASTING	STATION	OFFSET	DATE	DESCRIPTION	REFERENCE
1005	850849.084	4171438.690	1874+99.92	124.8	12/8/08	FD.. 5/8" IRON ROD, FLUSH WITH SURFACE, GOOD CONDITION. WHITE CARSONITE POST NEARBY STATION 1875+00, 125 RT.	7B 12 18
1008	850360.484	4170754.419	1882+74.99	450.72	12/30/08	FD.. 5/8" IRON ROD WITH 1-1/2" ALUM. CAP STAMPED "ORE.ST.HWY DEPT", 0.8FT. BELOW SURFACE, WHITE CARSONITE POST STA. 1882+75,450 RT	7B 12 18
1007	850229.458	4170987.290	1882+74.77	200.78	12/30/08	FD.. 5/8" IRON ROD WITH 1-1/2" ALUM. CAP STAMPED "OREGON STATE HWY DEPT", 0.1FT. ABOVE SURFACE, STATION 1882+75, 200 RT.	7B 12 18
1008	850032.421	4170934.843	1884+59.81	125.11	12/30/08	FD.. 5/8" IRON ROD WITH 1-1/2" ALUM. CAP STAMPED "OREGON STATE HWY DEPT", 0.1FT. ABOVE SURFACE, STATION 1884+80, 125 RT.	7B 12 18
1009	849890.121	4170848.778	1888+28.88	125.2	12/30/08	FD.. 5/8" IRON ROD, 0.1 FT. ABOVE SURFACE, GOOD CONDITION, METAL PADDLE BOARD NEARBY MARKED "SHRW".	7B 12 18



SEE LINE LEGEND ON SHEET 1

POINT LEGEND

- ☆ FOUND GPS STATION
- FOUND MONUMENT
- ◆ SET CONTROL POINT

REGISTERED PROFESSIONAL LAND SURVEYOR
 JAMES M. STANLEY
 JULY 11, 2000
 49863LS
 EXPIRES 06/30/2010

RECORD DATA
 () PER ODOT R/W DRG. 7B-12-18

SI FEET OREGON DEPARTMENT OF TRANSPORTATION
 HORIZONTAL CONTROL, RECOVERY AND RETRACEMENT MAP
 I-5: N OAKLAND INTCHGE - SUTHERLIN INTCHGE SEC
 I-5: SUTHERLIN HILL TRUCK CLIMBING LANE
 PACIFIC HIGHWAY
 DOUGLAS COUNTY
 File: 14492RW.dgn

FOR ODOT REGION 3
 3500 NW. STEWART PKWY.
 ROSEBURG, OR. 97470

SEPTEMBER, 2009
 SCALE: 1" = 100'
 SHEET 5 OF 13

ST. HWY. 15 -023 E