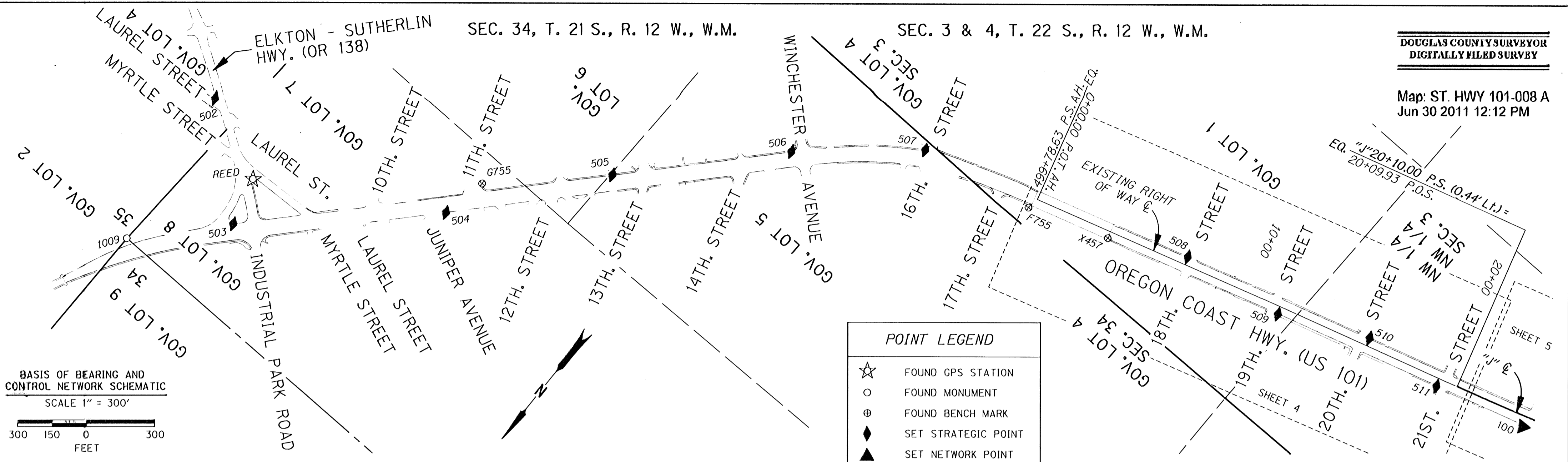


SEC. 34, T. 21 S., R. 12 W., W.M.

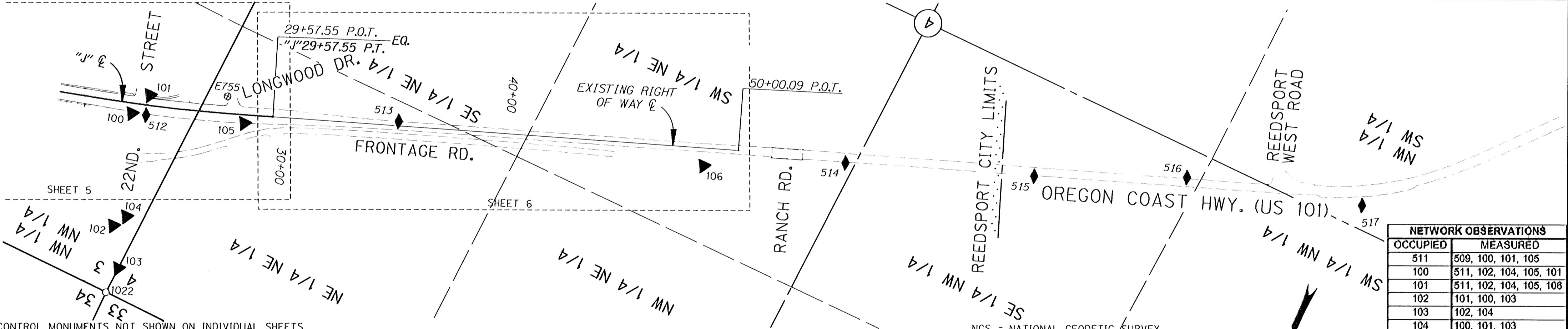
SEC. 3 & 4, T. 22 S., R. 12 W., W.M.



BASIS OF BEARING AND CONTROL NETWORK SCHEMATIC  
SCALE 1" = 300'  
300 150 0 300 FEET

**POINT LEGEND**

- ☆ FOUND GPS STATION
- FOUND MONUMENT
- ⊕ FOUND BENCH MARK
- ◆ SET STRATEGIC POINT
- ▲ SET NETWORK POINT



**NETWORK OBSERVATIONS**

OCCUPIED	MEASURED
511	509, 100, 101, 105
100	511, 102, 104, 105, 101
101	511, 102, 104, 105, 108
102	101, 100, 103
103	102, 104
104	100, 101, 103
105	100, 101, 108
108	105, 101

CONTROL MONUMENTS NOT SHOWN ON INDIVIDUAL SHEETS

NGS = NATIONAL GEODETIC SURVEY

PT. NO.	LDP NORTHING	LDP EASTING	ELEV.	STATION	OFFSET (- IS LT.)	DATE	DESCRIPTION	REFERENCE
102	760569.379	3983494.198				8/5/2009	SET MAG NAIL AND WASHER STAMPED "ODOT 102" FLUSH IN CONC. WALK	
103	760729.138	3983398.810				8/5/2009	SET MAG NAIL AND WASHER STAMPED "ODOT 103" FLUSH IN A.C.	
104	760509.190	3983458.190				8/5/2009	SET MAG NAIL AND WASHER STAMPED "ODOT 104" FLUSH IN CONC. WALK	
502	762574.913	3968973.847	12.08			5/3/2007	SET 5/8" I. REBAR 30" LONG WITH A 1 1/2" BRASS CAP STAMPED "ODOT CONTROL 502" 0.1 FT. BELOW SURFACE	
503	762952.744	3968567.118	14.08			5/3/2007	SET 1" BRASS PLUG STAMPED "ODOT CONTROL 503" FLUSH IN CONC. CURB	
504	762329.220	3967874.000	12.68			5/3/2007	SET 1" BRASS PLUG STAMPED "ODOT CONTROL 504" FLUSH IN CONC. CURB	
505	761742.969	3967411.545	14.34			5/3/2007	SET 1" BRASS PLUG STAMPED "ODOT CONTROL 505" FLUSH IN CONC. SIDEWALK	
506	761170.172	3966868.183	11.81			5/3/2007	SET 1" BRASS PLUG STAMPED "ODOT CONTROL 506" FLUSH IN CONC. SIDEWALK	
507	760798.567	3966414.880	12.69			5/3/2007	SET 1" BRASS PLUG STAMPED "ODOT CONTROL 507" FLUSH IN CONC. SIDEWALK	
514	758988.544	3960693.108				5/7/2007	SET 3/8" I. REBAR 24" LONG 0.1 FT BELOW SURFACE	
515	758694.502	3959918.475				5/7/2007	SET 3/8" I. REBAR 24" LONG FLUSH WITH SURFACE	
516	758421.109	3959308.520				5/7/2007	SET 3/8" I. REBAR 24" LONG FLUSH WITH SURFACE	
REED	762746.008	3988820.800	11.57			5/2/2007	FD. 3 3/4" BRASS DISK ATOP 10" DIAMETER CONCRETE PEDESTAL STAMPED "OREGON PRIMARY G.P.S. STATION REED 1989 N.G.S. FOR INFORMATION CONTACT OREGON DEPT OF TRANS OR COUNTY SURVEYOR" FLUSH WITH SURFACE GOOD CONDITION	NGS 1989
G755	762130.401	3967828.238	11.14			5/7/2007	FD. 1/2" STAINLESS STEEL ROD HAD THROUGH A 5" LOGO CAP STAMPED "G755 1988" (NAVD 88 DATUM)	NGS 1988

RECOVERED MONUMENTS NOT SHOWN ON INDIVIDUAL SHEETS

PT. NO.	LDP NORTHING	LDP EASTING	ELEV.	STATION	OFFSET (- IS LT.)	DATE	DESCRIPTION	REFERENCE
1009	783293.870	3988888.782				5/3/07	FD. 3 1/2" BRASS DISK (CANNOT SEE ROD) STAMPED "CORP OF ENGINEERS SURVEY MARK T21S R12W 1/4 34 35 1988 DO NOT DISTURB THIS MARK" FLUSH WITH SURFACE GOOD CONDITION	CS 61/30
1022	760848.201	3983401.518				8/11/09	FD. 1 1/4" PIPE WITH 2 1/2" BRASS CAP STAMPED "COUNTY SURVEYORS OFFICE 1987 T21S R12W S33 S34 S4 S3 T22S" ATOP 12" DIA. CONC. PEDESTAL CAP 0.2 FT. ABOVE CONC. AND CONC. FLUSH WITH SURFACE GOOD CONDITION.	DOUG. CO. 1987

REGISTERED PROFESSIONAL LAND SURVEYOR  
**DIGITAL SIGNATURE**  
OREGON  
JANUARY 9, 2001  
MARSHALL R. WAGSTAFF  
49476LS  
EXPIRES 6/30/2012

**SI FEET**  
OREGON DEPARTMENT OF TRANSPORTATION  
CONTROL, RECOVERY, RETRACEMENT AND RIGHT OF WAY BOUNDARY MONUMENTATION MAP  
US101: REEDSPOUR TO WINCHESTER BAY PAVING  
OREGON COAST HIGHWAY NO. 9, US101, M.P. 211.41 - 215.77  
DOUGLAS COUNTY  
FILE: 13769RW.DGN MODEL: RWM  
FOR ODOT REGION 3  
3500 NW. STEWART PKWY.  
ROSEBURG, OR. 97470  
JUNE 29, 2011  
SCALE: 1" = 300'  
SHEET 1 OF 6

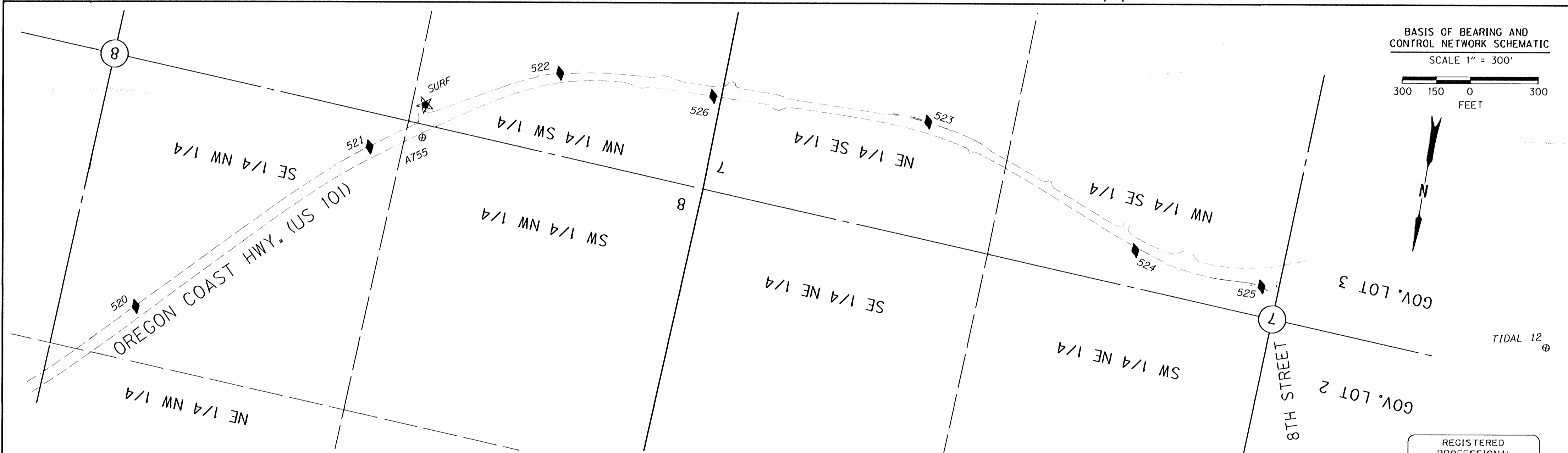
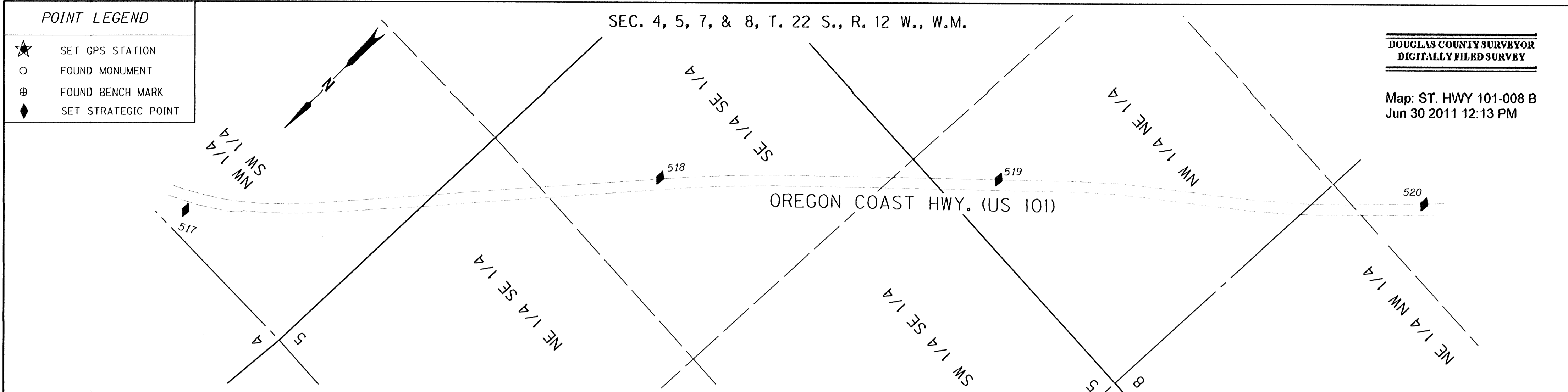
POINT LEGEND

- ★ SET GPS STATION
- FOUND MONUMENT
- ⊕ FOUND BENCH MARK
- ◆ SET STRATEGIC POINT

SEC. 4, 5, 7, & 8, T. 22 S., R. 12 W., W.M.

DOUGLAS COUNTY SURVEYOR  
DIGITALLY FILED SURVEY

Map: ST. HWY 101-008 B  
Jun 30 2011 12:13 PM



CONTROL MONUMENTS NOT SHOWN ON INDIVIDUAL SHEETS

NGS = NATIONAL GEODETIC SURVEY, USGS = UNITED STATES COAST AND GEODETIC SURVEY

PT. NO.	LDP NORTHING	LDP EASTING	ELEV.	STATION	OFFSET (- IS LT.)	DATE	DESCRIPTION	REFERENCE
517	758213.705	3958581.101				5/7/2007	SET 3/8" I. REBAR 24" LONG 0.1 FT. BELOW SURFACE	
518	758028.583	3957192.710				5/8/2007	SET 3/8" I. REBAR 24" LONG 0.1 FT. BELOW SURFACE	
519	755574.659	3958138.957				5/8/2007	SET 3/8" I. REBAR 24" LONG 0.1 FT BELOW SURFACE	
520	754319.308	3954743.928				5/8/2007	SET PK NAIL AND WASHER STAMPED "ODOT 520" FLUSH WITH AC SURFACE	
521	753448.278	3953853.057				5/8/2007	SET PK NAIL AND WASHER STAMPED "ODOT 521" FLUSH WITH AC SURFACE	
522	752981.278	3953084.431				5/8/2007	SET 3/8" I. REBAR 24" LONG FLUSH WITH SURFACE	
523	752905.983	3951450.827				5/8/2007	SET 1" BRASS PLUG STAMPED "ODOT CONTROL 523" FLUSH IN CONC. CURB	
524	753300.871	3950454.340				5/8/2007	SET 3/8" I. REBAR 24" LONG FLUSH WITH SURFACE	
525	753359.408	3949879.729				5/8/2007	SET 1" BRASS PLUG STAMPED "ODOT CONTROL 525" FLUSH IN CONC. CURB	
526	752981.511	3952403.072				5/8/2007	SET 3/8" I. REBAR 24" LONG FLUSH WITH SURFACE	
527	781829.182	3989183.728	13.53			5/8/2007	SET 1" BRASS PLUG STAMPED "ODOT CONTROL 527" SET IN CONCRETE SIDEWALK (NOT SHOWN)	
528	781533.087	3988859.952	18.94			5/8/2007	SET 1" BRASS PLUG STAMPED "ODOT CONTROL 528" SET IN CONCRETE SIDEWALK (NOT SHOWN)	
529	782301.887	3970240.183				8/19/2007	SET 1" BRASS PLUG STAMPED "ODOT CONTROL 529" SET IN CONCRETE CURB (NOT SHOWN)	
SURF	753222.355	3953843.531	13.54			5/8/2007	SET 1" DIAM. BRASS PLUG IN TOP OF CONC. UTILITY VAULT STAMPED "ODOT CONTROL SURF"	
TIDAL12	753401.283	3948598.682				5/8/2007	FD. 3 3/4" BRASS DISK STAMPED "U.S. COAST AND GEODETIC SURVEY SURVEY BENCHMARK FOR INFORMATION WRITE TO THE DIRECTOR WASHINGTON DC TIDAL12 1973" LOCATED IN THE WEST END OF THE NORTH CURB OF A BRIDGE SPANNING WINCHESTER CREEK	USGS 1973
A755	753368.297	3953829.750	22.03			5/8/2007	FD. 3 3/4" BRASS DISK STAMPED "A755 1988" NGS BENCHMARK	NGS 1988

REGISTERED  
PROFESSIONAL  
LAND SURVEYOR

DIGITAL SIGNATURE

OREGON  
JANUARY 9, 2001  
MARSHALL R. WAGSTAFF  
49476LS

EXPIRES 6/30/2012

SEE LINE LEGEND  
ON SHEET 3



OREGON DEPARTMENT OF TRANSPORTATION  
CONTROL, RECOVERY, RETRACEMENT AND  
RIGHT OF WAY BOUNDARY MONUMENTATION MAP  
US101: REEDSPORT TO WINCHESTER BAY PAVING  
OREGON COAST HIGHWAY NO. 9, US101, M.P. 211.41 - 215.77  
DOUGLAS COUNTY

FILE: 13769RW.DGN MODEL: RWM

FOR ODOT REGION 3  
3500 NW. STEWART PKWY.  
ROSEBURG, OR. 97470

JUNE 29, 2011  
SCALE: 1" = 300'  
SHEET 2 OF 6

**PURPOSE**

THE PURPOSE OF THIS SURVEY WAS TO PROVIDE TOPOGRAPHICAL DATA; DIGITAL TERRAIN MODEL; AND A CONTROL, RECOVERY, RETRACEMENT AND RIGHT OF WAY BOUNDARY MONUMENTATION MAP FOR A PROJECT NAMED "US 101: REEDSPORT TO WINCHESTER BAY PAVING" KEY NUMBER 13769. SURVEY CONTROL AND MONUMENT TIE FIELD WORK WAS COMPLETED ON AUGUST 11, 2009. THE ORIGINAL FIELD NOTES FOR THIS PROJECT ARE ARCHIVED IN SALEM IN FIELD BOOK NUMBER 4401.

**COORDINATES AND BASIS OF BEARINGS**

THIS PROJECT UTILIZES A LOCAL DATUM PLANE (LDP) WHICH IS RELATIVE TO THE OREGON COORDINATE SYSTEM OF 1983 (CORS 96) (EPOCH 2002) SOUTH ZONE WITH RESPECT TO THE LOCAL LATITUDE AND GROUND ELEVATION. THE LDP COORDINATES DEFINE TRUE GROUND DISTANCES. TO CONVERT THE LDP COORDINATES TO THE OREGON COORDINATE SYSTEM OF 1983 (CORS 96) (EPOCH 2002) SOUTH ZONE MULTIPLY THE LDP COORDINATES BY 0.99993909

**HORIZONTAL CONTROL**

"REED" WHICH IS A N.G.S. PRIMARY GPS STATION MONUMENT AND "SURF" A MONUMENT SET FOR THIS PROJECT WERE USED AS CONTROL MONUMENTS. STATIC GPS OBSERVATIONS WERE COLLECTED ON EACH POINT. AN OPUS SOLUTION WAS USED TO PRODUCE NAD 83 (CORS 96) (EPOCH 2002) SOUTH ZONE COORDINATES THAT WERE USED TO CONTROL THIS PROJECT. THE OPUS COORDINATES OF "REED" FIT THIS PROJECT BETTER THAN THE RECORD COORDINATES; THEREFORE THE N.G.S. COORDINATES WERE DISREGARDED.

**HORIZONTAL CONTROL EQUIPMENT**

A LEICA GX1230 DUAL FREQUENCY GPS RECEIVER WAS USED FOR GPS OBSERVATIONS. IT HAS THE FOLLOWING ACCURACY. PHASED DIFFERENTIAL STATIC METHOD ERROR OF 5 MM + 0.5 PPM, AND A VERTICAL ERROR OF 10 MM + 0.5 PPM; PHASED DIFFERENTIAL RTK METHOD HORIZONTAL ERROR OF 10 MM + 1 PPM, AND A VERTICAL ERROR OF 20 MM + 1 PPM.

**VERTICAL CONTROL**

BENCH MARKS A755, E755, G755, AND X457 WERE HELD AS VERTICAL CONTROL FOR THIS PROJECT. LEVEL CIRCUITS WERE RUN TO ESTABLISH ELEVATIONS ON CONTROL POINTS USED FOR TOPOGRAPHY.

**VERTICAL CONTROL EQUIPMENT**

A LEICA NA2002 DIGITAL LEVEL AND A LEICA GBNL4C ALUMINUM LEVEL ROD WAS USED TO COMPLETE THE LEVEL CIRCUITS. THIS INSTRUMENT HAS THE FOLLOWING STANDARD DEVIATION OF 1.5 MM IN A 1 KILOMETER DOUBLE RUN LEVEL CIRCUIT.

**CURRENT EXISTING HIGHWAY RIGHT OF WAY CENTER LINE**

THIS CENTER LINE HAS NO CENTER LINE DESIGNATOR AND WAS RESOLVED USING ODOT RIGHT OF WAY DRAWING (DRG.) 7B-7-12. THE CENTERLINE WAS RESOLVED WORKING BACKWARDS ALONG THE ALIGNMENT STARTING WITH THE LAST TANGENT ON THE PROJECT. ON THIS LAST TANGENT THE RECORD OFFSET FROM POINT 1026 WAS HELD AND A BEST FIT THE OTHER RIGHT OF WAY MONUMENTS ON THAT TANGENT. FOR THE CURVE, INITIALLY THE RECORD CURVE DATA WAS HELD. A TANGENT WAS THEN PROJECTED BACK ON LINE FROM THIS CURVE TO THE RECORD ANGLE POINT. USING THE RECORD ANGLE AT THIS ANGLE POINT ANOTHER TANGENT WAS PROJECTED TO THE BRIDGE. THIS METHOD DID NOT FIT THE BRIDGE WITHIN AN ACCEPTABLE TOLERANCE. NEXT, WORKING BACKWARDS FROM THE LAST TANGENT AGAIN THE RECORD DEGREE OF CURVE AND SPIRAL LENGTH WAS HELD FOR THE CURVE. THE NEXT TANGENT BACK WAS RESOLVED BY HOLDING THE RECORD OFFSET FROM POINT 1021 AND SPLITTING THE EXISTING CURBS JUST WEST OF 19TH STREET. THE NEXT TANGENT WAS RESOLVED USING A SPLIT OF THE EXISTING CURBS JUST EAST OF 19TH STREET AND A SPLIT OF THE EXISTING CURBS AT THE EASTERLY END OF THE BRIDGE OVER SCHOFIELD CREEK (ODOT BRIDGE NO. 00983). THE ANGLE POINT WAS THEN PLACED AT THE INTERSECTION OF THESE TWO TANGENTS. INFORMATION SHOWN WITHOUT BRACKETS IS MEASURED/RESOLVED. IF MEASURED/RESOLVED DATA DIFFERS FROM RECORD DATA BOTH ARE SHOWN. IF ONLY RECORD INFORMATION IS SHOWN IT WAS HELD.

**"J" CENTERLINE**

THIS CENTER LINE USES "J" AS A CENTER LINE DESIGNATOR AND WAS AN ATTEMPT TO RESOLVE THE EXISTING RIGHT OF WAY USING DRG. 7B-7-12. UNFORTUNATELY THE "J" LINE WAS RESOLVED IN ERROR BY A PREVIOUS PROJECT SURVEYOR. RIGHT OF WAY WAS ALREADY PURCHASED IN THE AREA SHOWN IN "DETAIL A" ON SHEET 5 BASED ON THE "J" ALIGNMENT BEFORE THE ERROR WAS FOUND. THE "J" ALIGNMENT WAS ALSO RESOLVED WORKING BACKWARDS ALONG THE ALIGNMENT STARTING WITH THE LAST TANGENT ON THE PROJECT. THIS LAST TANGENT USES THE SAME TANGENT AS THE CURRENT EXISTING HIGHWAY RIGHT OF WAY CENTER LINE ABOVE. A CURVE WAS THEN PROJECTED THAT DOES NOT MATCH ANY CURVE DATA. THE CURVE DATA FOR THE "J" ALIGNMENT IS SHOWN ON THE FACE OF THIS MAP. THE "J" ALIGNMENT DOES NOT REPRESENT THE CURRENT EXISTING HIGHWAY RIGHT OF WAY CENTER LINE.

**STATIONING**

RECORD STATIONING OF 29+44.37 FROM DRG. 7B-7-12 WAS HELD ON POINT 1025 FOR BOTH CENTER LINES ABOVE.

**ABANDONED HIGHWAY**

THE ABANDONED HIGHWAY (LONGWOOD DRIVE) SOUTHWESTERLY OF THE INTERSECTION OF HIGHWAY US101 AND 22ND STREET WAS RESOLVED USING DRG. 3B-12-15. THIS CENTER LINE IS NOT SHOWN ON THIS SURVEY TO AVOID CLUTTER, BUT THE RIGHT OF WAY LINES, BEARINGS, AND CALCULATED POINTS DERIVED FROM THIS ALIGNMENT ARE SHOWN. THE CENTER LINE WAS BACKED IN FROM THE EQUATION AT 0+00.00 P.O.T AHEAD EQUALS 499+78.63 P.S. AHEAD (SEE DRG. 7B-7-12) HOLDING STATION 499+78.63 P.S. AHEAD. THE BACK TANGENT WAS TAKEN FROM THE CURRENT EXISTING HIGHWAY RIGHT OF WAY CENTER LINE (DESCRIBED ABOVE). THE RECORD CURVE DATA WAS TAKEN FROM DRG. 3B-12-15. ON THE INITIAL ATTEMPT TO RESOLVE THE CENTER LINE THE FORWARD TANGENT FELL 0.19 FEET FROM THE RECORD OFFSET TO POINT 1024. THE ONLY CHANGE TO THIS CENTER LINE IS THAT THE FORWARD TANGENT WAS MOVED PARALLEL TO HOLD THE RECORD OFFSET FROM POINT 1024. THE STATIONING ON THIS CENTER LINE INCREASES IN THE OPPOSITE DIRECTION OF THE CURRENT EXISTING HIGHWAY RIGHT OF WAY CENTER LINE ABOVE.

LINE LEGEND	
	EXISTING HIGHWAY RIGHT OF WAY
	NEW HIGHWAY RIGHT OF WAY
	FALSE CALL (DEFINES DIRECTION OF LINE)
	EXISTING STREET RIGHT OF WAY
	EXISTING HIGHWAY ACCESS CONTROL/RIGHT OF WAY
	EXISTING EASEMENT
	EXISTING PROPERTY
	CITY THIS SIDE CITY LIMITS
	TOWNSHIP
	SECTION
	1/4 SECTION
	1/16 SECTION OR GOVERNMENT LOT
	STATION WIDTH ACCESS RESERVATION

REGISTERED  
PROFESSIONAL  
LAND SURVEYOR

DIGITAL SIGNATURE

OREGON  
JANUARY 9, 2001  
MARSHALL R. WAGSTAFF  
49476LS

EXPIRES 6/30/2012



OREGON DEPARTMENT OF TRANSPORTATION  
CONTROL, RECOVERY, RETRACEMENT AND  
RIGHT OF WAY BOUNDARY MONUMENTATION MAP  
US101: REEDSPORT TO WINCHESTER BAY PAVING  
OREGON COAST HIGHWAY NO. 9, US101, M.P. 211.41 - 215.77  
DOUGLAS COUNTY

FILE: 13769RW.DGN MODEL: RWM

FOR ODOT REGION 3  
3500 NW. STEWART PKWY.  
ROSEBURG, OR. 97470

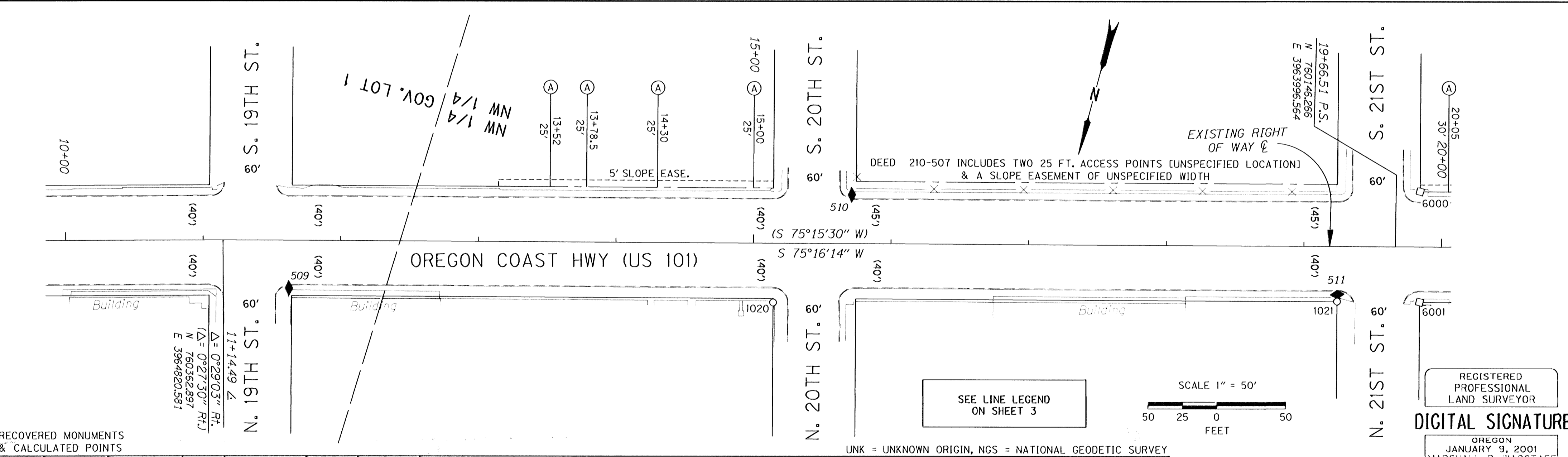
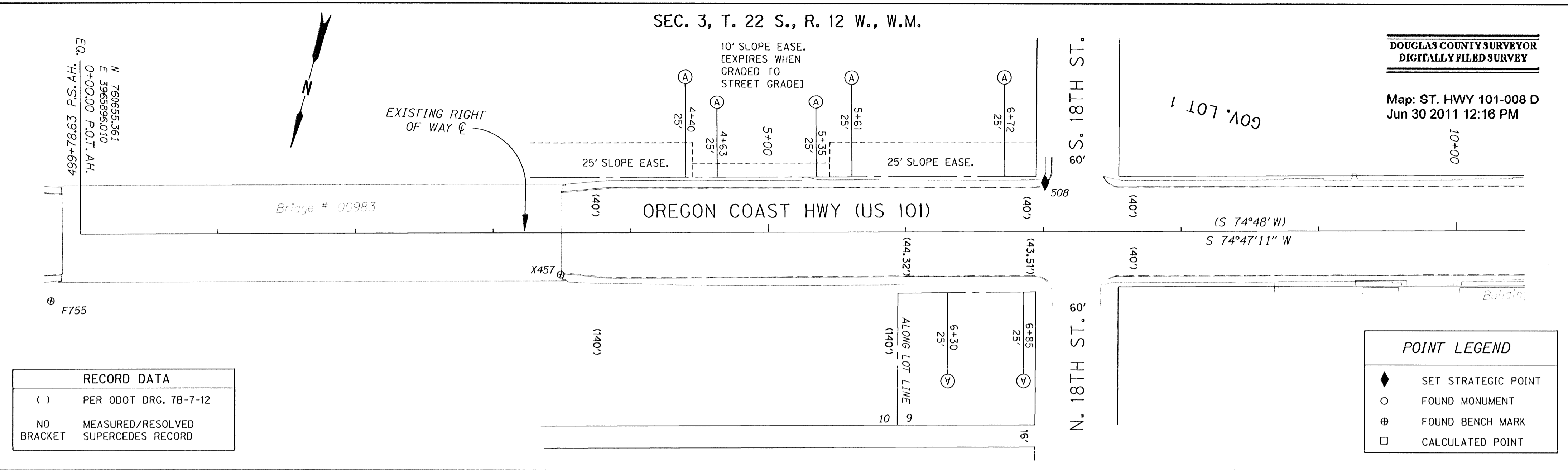
JUNE 29, 2011

SHEET 3 OF 6

SEC. 3, T. 22 S., R. 12 W., W.M.

DOUGLAS COUNTY SURVEYOR  
DIGITALLY FILED SURVEY

Map: ST. HWY 101-008 D  
Jun 30 2011 12:16 PM



RECOVERED MONUMENTS & CALCULATED POINTS

PT. NO.	LDP NORTHING	LDP EASTING	ELEV.	STATION	OFFSET (- IS LT.)	DATE	DESCRIPTION	REFERENCE
1020	760302.798	3984422.813		15+14.48	43.01	8/11/09	FD. 1/2" I.D. PIPE 0.3 FT. BELOW SURFACE GOOD CONDITION	M28-27
1021	760195.898	3984027.269		19+24.24	40.00	8/11/09	FD. 1/2" I.D. PIPE 0.8 FT. BELOW SURFACE GOOD CONDITION	UNK
8000	760103.052	3983989.509		19+84.32	-40.00		CALCULATED SW CORNER OF 21ST ST. & US101	
6001	760180.442	3983969.240		19+84.24	40.00		CALCULATED NW CORNER OF 21ST ST. & US101	
CONTROL MONUMENTS								
PT. NO.	LDP NORTHING	LDP EASTING	ELEV.	STATION	OFFSET (- IS LT.)	DATE	DESCRIPTION	REFERENCE
508	760437.195	3985228.883	54.09	7+01.02	-35.45	5/7/2007	SET 1" BRASS PLUG STAMPED "ODOT CONTROL 508" FLUSH IN CONC. SIDEWALK	
509	760384.397	3984785.571	69.38	11+82.22	34.78	5/7/2007	SET 1" BRASS PLUG STAMPED "ODOT CONTROL 509" FLUSH IN CONC. SIDEWALK	
510	760212.882	3984387.935	68.20	15+71.09	-35.30	5/7/2007	SET 1" BRASS PLUG STAMPED "ODOT CONTROL 510" FLUSH IN CONC. SIDEWALK	
511	760190.881	3984029.018	67.28	19+23.78	34.88	5/7/2007	SET 1" BRASS PLUG STAMPED "ODOT CONTROL 511" FLUSH IN CONC. SIDEWALK	
X457	760593.208	3985551.358	37.83	3+48.89	30.47	5/3/2007	FD. 3" BRASS DISK STAMPED "STATE HIGHWAY DEPARTMENT BM NO. X457 ELEVATION FEET 1954" IN WEST END OF NORTH CONC. WALKWAY OF BRIDGE	ODOT 1954 NGS 1988
F755	760707.792	3985904.335	13.27			5/3/2007	FD. 1/2" STAINLESS STEEL ROD HAD THROUGH A 5" LOGO CAP STAMPED "F755 1988" (RECORD NAVD 88 ELEVATION OF 13.40 IS BAD)	

SI FEET

OREGON DEPARTMENT OF TRANSPORTATION  
CONTROL, RECOVERY, RETRACEMENT AND  
RIGHT OF WAY BOUNDARY MONUMENTATION MAP  
US101: REEDSPORT TO WINCHESTER BAY PAVING  
OREGON COAST HIGHWAY NO. 9, US101, M.P. 211.41 - 215.77  
DOUGLAS COUNTY  
FILE: 13769RW.DGN MODEL: RWM

FOR ODOT REGION 3  
3500 NW. STEWART PKWY.  
ROSEBURG, OR. 97470

JUNE 29, 2011  
SCALE: 1" = 50'  
SHEET 4 OF 6

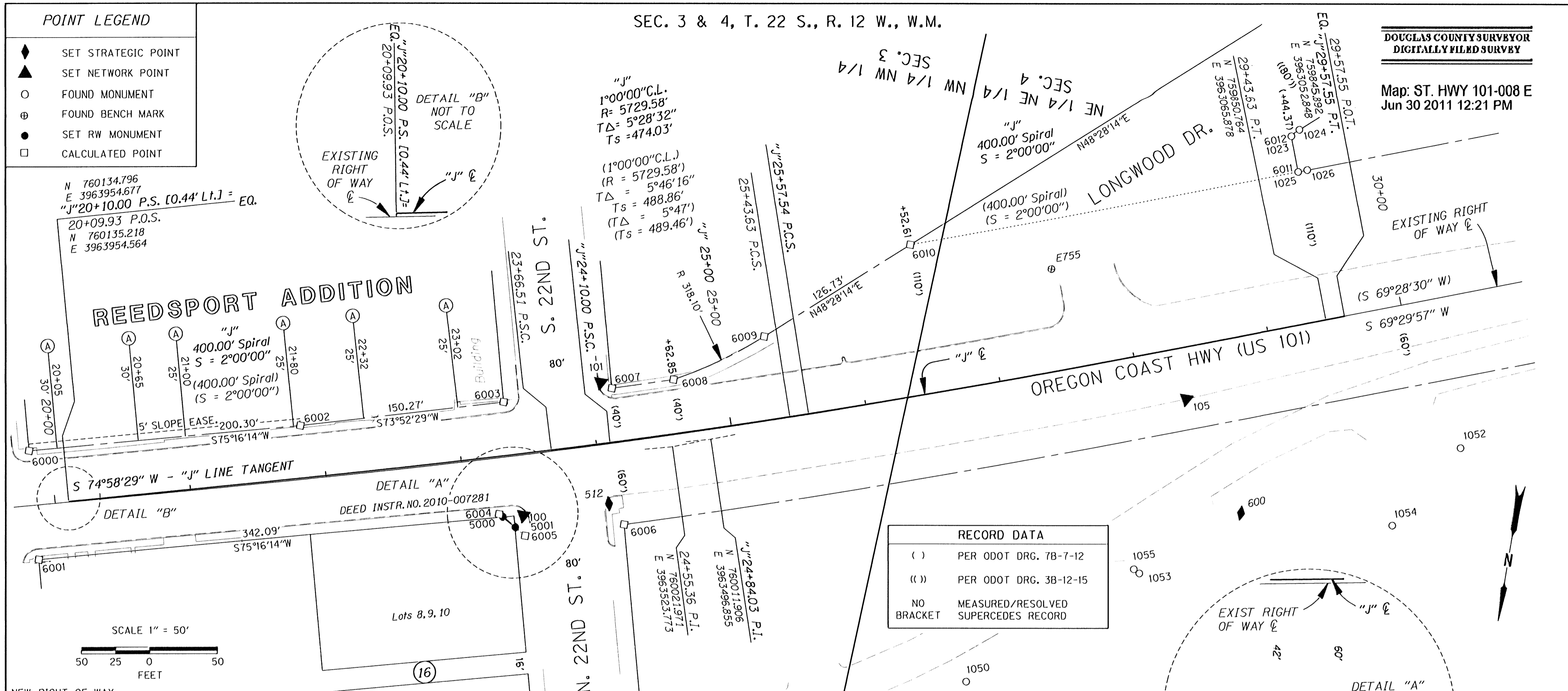
**POINT LEGEND**

- ◆ SET STRATEGIC POINT
- ▲ SET NETWORK POINT
- FOUND MONUMENT
- ⊕ FOUND BENCH MARK
- SET RW MONUMENT
- CALCULATED POINT

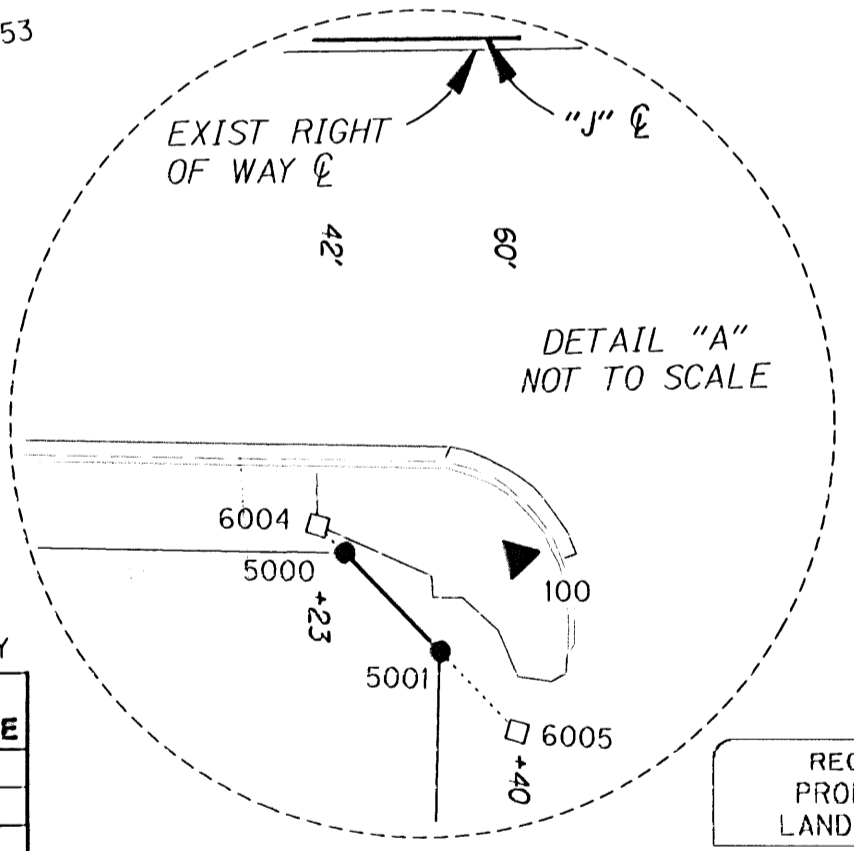
SEC. 3 & 4, T. 22 S., R. 12 W., W.M.

DOUGLAS COUNTY SURVEYOR  
DIGITALLY FILED SURVEY

Map: ST. HWY 101-008 E  
Jun 30 2011 12:21 PM



RECORD DATA	
( )	PER ODOT DRG. 7B-7-12
(( ))	PER ODOT DRG. 3B-12-15
NO BRACKET	MEASURED/RESOLVED SUPERCEDES RECORD



PT. NO.	LDP NORTHING	LDP EASTING	STATION	OFFSET (- IS LT.)	DATE	DESCRIPTION
5000	760093.463	3963638.390	23+25.15	43.37	8/20/2011	SET 5/8" X 30" I. REBAR W/ 2" ALUM. CAP STAMPED "ODOT RIGHT OF WAY 5000" 0.02' BELOW A.C. AT INTERSECTION OF EXTG. & NEW RIGHT OF WAY
5001	760099.422	3963628.118	23+33.28	51.99	8/20/2011	SET 5/8" X 30" I. REBAR W/ 2" ALUM. CAP STAMPED "ODOT RIGHT OF WAY 5001" 0.05' BELOW A.C. AT INTERSECTION OF EXTG. & NEW RIGHT OF WAY
6004	760091.824	3963641.215	"J" 23+23.00	42.00		CALCULATED FALSE CALL POINT (DEFINES DIRECTION OF RIGHT OF WAY LINE NOT END POINT)
6005	760104.288	3963619.728	"J" 23+40.00	60.00		CALCULATED FALSE CALL POINT (DEFINES DIRECTION OF RIGHT OF WAY LINE NOT END POINT)

CONTROL MONUMENTS							NGS = NATIONAL GEODETIC SURVEY	
PT. NO.	LDP NORTHING	LDP EASTING	ELEV.	STATION	OFFSET (- IS LT.)	DATE	DESCRIPTION	REFERENCE
100	760089.747	3963623.752	65.81	23+40.13	43.94	8/5/2009	SET 1" DIA. BRASS PLUG STAMPED "ODOT CONTROL 100" FLUSH IN CONC. WALK	
101	759984.416	3963583.911	68.25	24+08.75	-45.37	8/5/2009	SET 1" DIA. BRASS PLUG STAMPED "ODOT CONTROL 101" FLUSH IN CONC. WALK	
105	759925.048	3963157.784		28+31.65	37.50	8/5/2009	SET MAG NAIL AND WASHER STAMPED "ODOT 105" FLUSH IN A.C. SHOULDER	
512	760070.981	3963583.265	68.35	24+02.99	43.44	5/7/2007	SET 1" BRASS PLUG STAMPED "ODOT CONTROL 512" FLUSH IN CONC. SIDEWALK	
E755	759847.623	3963270.727	68.79	27+52.28	-74.18	5/7/2007	FD. 1/2" STAINLESS STEEL ROD HAD THROUGH A 5" LOGO CAP STAMPED "E755 1988" (NAVD 88 DATUM)	NGS 1988
600	760000.694	3963104.391				3/27/2011	SET MAG NAIL AND WASHER STAMPED "ODOT 600" IN A.C.	

RECOVERED MONUMENTS & CALCULATED POINTS							BPA = BONNEVILLE POWER ADMINISTRATION	
PT. NO.	LDP NORTHING	LDP EASTING	ELEV.	STATION	OFFSET (- IS LT.)	DATE	DESCRIPTION	REFERENCE
1050	760155.898	3963282.843				3/27/11	FD. 3 1/2" BRASS DISK STAMPED "BONNEVILLE POWER ADMINISTRATION" FLUSH WITH SURFACE GOOD CONDITION	BPA
1051	759503.329	3961821.830				4/4/11	FD. T-BOLT 0.3 FT. BELOW SURFACE GOOD CONDITION	M49-44
1052	759927.129	3962952.730				4/4/11	FD. 5/8" IRON ROD 0.2 FT. BELOW SURFACE GOOD CONDITION	M49-44
1053	760058.674	3963170.415				4/4/11	FD. 3 1/2" BRASS DISK STAMPED "BONNEVILLE POWER ADMINISTRATION" BENT SLIGHTLY EAST FAIR CONDITION	BPA
1054	759991.330	3962992.944				4/4/11	FD. 1 1/4" YELLOW PASTIC CAP STAMPED "ESTABROOK 2703" 0.3 FT. ABOVE SURFACE FAIR CONDITION	M127-49
1055	760054.332	3963174.915				4/4/11	FD. 5/8" IRON ROD 0.3 FT. BELOW SURFACE GOOD CONDITION	M127-49
6002	760052.125	3963795.794		21+85.02	-39.24		CALCULATED ANGLE POINT IN RIGHT OF WAY	
6003	760010.389	3963651.434		23+38.07	-40.01		CALCULATED SE CORNER OF 22ND ST. & US101	
6006	760084.050	3963549.444		24+12.28	60.00		CALCULATED NW CORNER OF 22ND ST. & US101	
6007	759987.218	3963574.805		24+18.68	-40.00		CALCULATED SW CORNER OF 22ND ST. & US101	
6008	759973.480	3963531.088		24+82.85	-40.00		CALCULATED END OF 318.10' RADIUS CURVE	
6009	759931.298	3963470.565		25+34.07	-61.34		CALCULATED BEGINNING OF 318.10' RADIUS CURVE	
6010	759847.273	3963375.694		28+52.61	-110.00		CALCULATED END OF ACCESS CONTROL	

REGISTERED PROFESSIONAL LAND SURVEYOR

**DIGITAL SIGNATURE**

OREGON  
JANUARY 9, 2001  
MARSHALL R. WAGSTAFF  
49476LS

EXPIRES 6/30/2012

SEE LINE LEGEND ON SHEET 3

SI FEET

OREGON DEPARTMENT OF TRANSPORTATION  
CONTROL, RECOVERY, RETRACEMENT AND  
RIGHT OF WAY BOUNDARY MONUMENTATION MAP  
US101: REEDSPORT TO WINCHESTER BAY PAVING  
OREGON COAST HIGHWAY NO. 9, US101, M.P. 211.41 - 215.77  
DOUGLAS COUNTY  
FILE: 13769RW.DGN MODEL: RWM

FOR ODOT REGION 3  
3500 NW. STEWART PKWY.  
ROSEBURG, OR. 97470

JUNE 29, 2011  
SCALE: 1" = 50'  
SHEET 5 OF 6

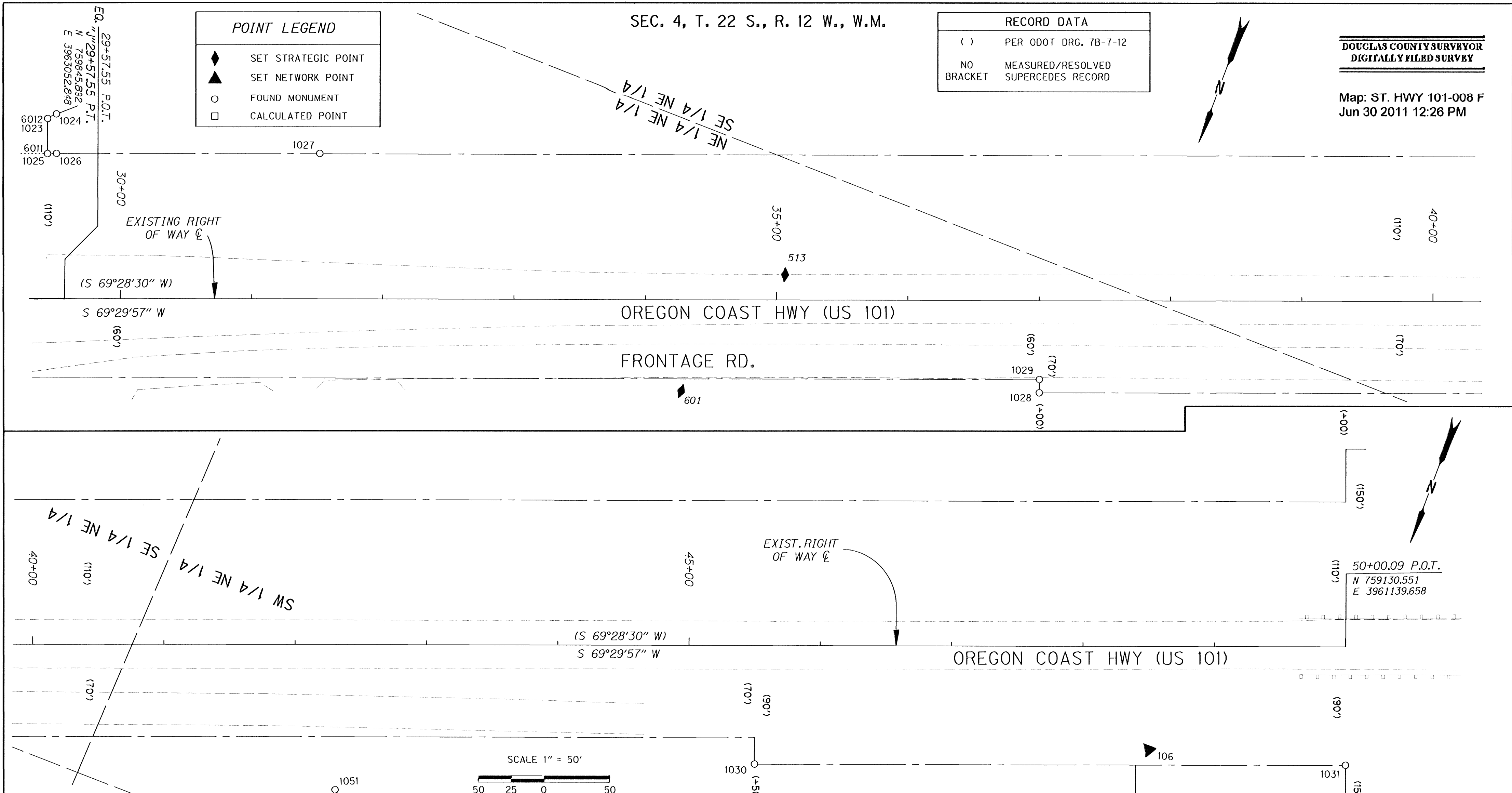
SEC. 4, T. 22 S., R. 12 W., W.M.

RECORD DATA	
( )	PER ODOT DRG. 7B-7-12
NO BRACKET	MEASURED/RESOLVED SUPERCEDES RECORD

DOUGLAS COUNTY SURVEYOR  
DIGITALLY FILED SURVEY

Map: ST. HWY 101-008 F  
Jun 30 2011 12:26 PM

POINT LEGEND	
◆	SET STRATEGIC POINT
▲	SET NETWORK POINT
○	FOUND MONUMENT
□	CALCULATED POINT



PT. NO.	LDP NORTHING	LDP EASTING	ELEV.	STATION	OFFSET (- IS LT.)	DATE	DESCRIPTION	REFERENCE
108	759258.519	3981252.903		48+49.90	78.33	8/5/2009	SET MAG NAIL AND WASHER STAMPED "ODOT 108" FLUSH IN A.C. APPROACH	
513	759835.828	3982545.881		35+08.15	-19.14	5/7/2007	SET PK NAIL AND WASHER STAMPED "ODOT 513" FLUSH IN AC. SURFACE	
601	759748.374	3982588.904		34+28.95	69.27	3/27/2011	SET MAG NAIL AND WASHER STAMPED "ODOT 601"	

PT. NO.	LDP NORTHING	LDP EASTING	ELEV.	STATION	OFFSET (- IS LT.)	DATE	DESCRIPTION	REFERENCE
1023	759722.578	3983112.888		29+44.49	-138.53	8/11/09	FD. 1/2" I. ROD BENT WEST 0.1 FT. BELOW SURFACE POOR CONDITION	7B-7-12
1024	759718.933	3983107.881		29+51.17	-140.08	8/11/09	FD. 5/8" I. ROD WITH 1 1/4" YELLOW PLASTIC CAP STAMPED "R.J. HINTZ PLS 497" 0.7 FT. BELOW SURFACE GOOD CONDITION.	83/3-5
1025	759747.588	3983103.871		29+44.37	-109.90	8/11/09	FD. 1/2" I. ROD BENT SOUTH 0.1 FT. BELOW SURFACE POOR CONDITION	7B-7-12
1026	759745.081	3983097.318		29+51.19	-110.00	8/11/09	FD. 5/8" I. ROD WITH 1 1/4" YELLOW PLASTIC CAP STAMPED "R.J. HINTZ PLS 497" 0.7 FT. BELOW SURFACE GOOD CONDITION	83/3-5
1027	759874.878	3982909.318		31+51.94	-110.10	8/11/09	FD. 5/8" I. ROD WITH 1 1/4" YELLOW PLASTIC CAP STAMPED "R.J. HINTZ PLS 497" 0.3 FT. BELOW SURFACE GOOD CONDITION	83/3-5
1028	759851.489	3982332.879		38+99.99	70.08	8/11/09	FD. 1/2" I. ROD BENT NW 0.1 FT. BELOW SURFACE POOR CONDITION	7B-7-12
1029	759842.011	3982338.328		37+00.09	59.97	8/11/09	FD. 1/2" I. ROD BENT SE 0.9 FT. BELOW SURFACE POOR CONDITION	7B-7-12
1030	759372.388	3981529.882		45+50.07	89.92	8/11/09	FD. 1/2" I. ROD UNDER BACK OF CONC. WALK 0.4 FT. BELOW SURFACE GOOD CONDITION	7B-7-12
1031	759214.752	3981108.219		50+00.05	89.88	8/11/09	FD. 1 1/2" ALUM. CAP STAMPED "OREG. STATE HWY. DIV." 0.5 FT. BELOW SURFACE GOOD CONDITON	7B-7-12
1032	759270.908	3981087.251		50+00.02	149.82	8/11/09	FD. 3/4" I. ROD 0.4 FT. BELOW SURFACE GOOD CONDITION	7B-7-12
1051	759503.329	3981821.830		42+30.57	110.28	4/4/11	FD. T-BOLT 0.3 FT. BELOW SURFACE GOOD CONDITION	M49-44
6011	759747.471	3983103.707		29+44.37	-110.00		CALCULATED POINT	
6012	759721.785	3983113.318		29+44.37	-137.44		CALCULATED POINT	

REGISTERED PROFESSIONAL LAND SURVEYOR

**DIGITAL SIGNATURE**

OREGON  
JANUARY 9, 2001  
MARSHALL R. WAGSTAFF  
49476LS

EXPIRES 6/30/2012

SEE LINE LEGEND ON SHEET 3

SI FEET

**OREGON DEPARTMENT OF TRANSPORTATION**  
CONTROL, RECOVERY, RETRACEMENT AND  
RIGHT OF WAY BOUNDARY MONUMENTATION MAP  
US101: REEDSPORT TO WINCHESTER BAY PAVING  
OREGON COAST HIGHWAY NO. 9, US101, M.P. 211.41 - 215.77  
DOUGLAS COUNTY

FILE: 13769RW.DGN MODEL: RWM

FOR ODOT REGION 3  
3500 NW. STEWART PKWY.  
ROSEBURG, OR. 97470

JUNE 29, 2011  
SCALE: 1" = 50'  
SHEET 6 OF 6