

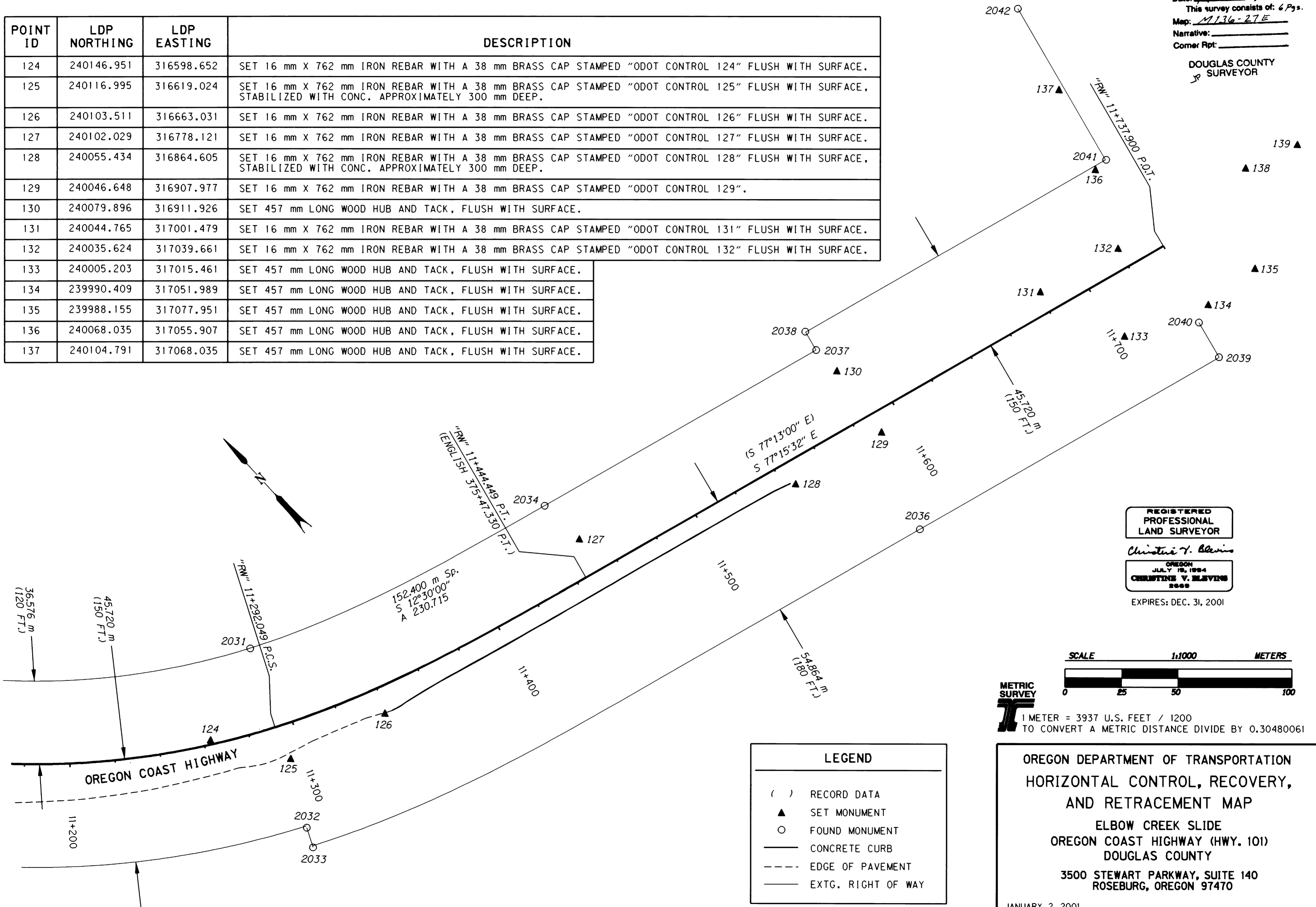
COUNTY SURVEYORS FILE DATA
DO NOT REMOVE FROM OFFICE

SW 1/4 SEC. 4, T. 21 S., R. 12 W., W. M.

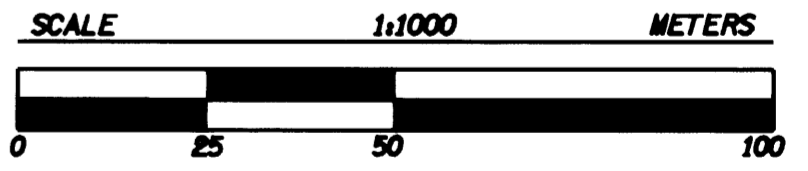
FILED
Date: 1/9/2001 By: JP
This survey consists of: 6 Pgs.
Map: M136-27E
Narrative: _____
Corner Rpt: _____

DOUGLAS COUNTY
SURVEYOR

POINT ID	LDP NORTHING	LDP EASTING	DESCRIPTION
124	240146.951	316598.652	SET 16 mm X 762 mm IRON REBAR WITH A 38 mm BRASS CAP STAMPED "ODOT CONTROL 124" FLUSH WITH SURFACE.
125	240116.995	316619.024	SET 16 mm X 762 mm IRON REBAR WITH A 38 mm BRASS CAP STAMPED "ODOT CONTROL 125" FLUSH WITH SURFACE, STABILIZED WITH CONC. APPROXIMATELY 300 mm DEEP.
126	240103.511	316663.031	SET 16 mm X 762 mm IRON REBAR WITH A 38 mm BRASS CAP STAMPED "ODOT CONTROL 126" FLUSH WITH SURFACE.
127	240102.029	316778.121	SET 16 mm X 762 mm IRON REBAR WITH A 38 mm BRASS CAP STAMPED "ODOT CONTROL 127" FLUSH WITH SURFACE.
128	240055.434	316864.605	SET 16 mm X 762 mm IRON REBAR WITH A 38 mm BRASS CAP STAMPED "ODOT CONTROL 128" FLUSH WITH SURFACE, STABILIZED WITH CONC. APPROXIMATELY 300 mm DEEP.
129	240046.648	316907.977	SET 16 mm X 762 mm IRON REBAR WITH A 38 mm BRASS CAP STAMPED "ODOT CONTROL 129".
130	240079.896	316911.926	SET 457 mm LONG WOOD HUB AND TACK, FLUSH WITH SURFACE.
131	240044.765	317001.479	SET 16 mm X 762 mm IRON REBAR WITH A 38 mm BRASS CAP STAMPED "ODOT CONTROL 131" FLUSH WITH SURFACE.
132	240035.624	317039.661	SET 16 mm X 762 mm IRON REBAR WITH A 38 mm BRASS CAP STAMPED "ODOT CONTROL 132" FLUSH WITH SURFACE.
133	240005.203	317015.461	SET 457 mm LONG WOOD HUB AND TACK, FLUSH WITH SURFACE.
134	239990.409	317051.989	SET 457 mm LONG WOOD HUB AND TACK, FLUSH WITH SURFACE.
135	239988.155	317077.951	SET 457 mm LONG WOOD HUB AND TACK, FLUSH WITH SURFACE.
136	240068.035	317055.907	SET 457 mm LONG WOOD HUB AND TACK, FLUSH WITH SURFACE.
137	240104.791	317068.035	SET 457 mm LONG WOOD HUB AND TACK, FLUSH WITH SURFACE.



REGISTERED
PROFESSIONAL
LAND SURVEYOR
Christine V. Blevins
OREGON
JULY 19, 1994
CHRISTINE V. BLEVINS
2669
EXPIRES: DEC. 31, 2001



METRIC SURVEY
1 METER = 3937 U.S. FEET / 1200
TO CONVERT A METRIC DISTANCE DIVIDE BY 0.30480061

LEGEND

()	RECORD DATA
▲	SET MONUMENT
○	FOUND MONUMENT
—	CONCRETE CURB
- - -	EDGE OF PAVEMENT
—	EXTG. RIGHT OF WAY

OREGON DEPARTMENT OF TRANSPORTATION
HORIZONTAL CONTROL, RECOVERY,
AND RETRACEMENT MAP
ELBOW CREEK SLIDE
OREGON COAST HIGHWAY (HWY. 101)
DOUGLAS COUNTY
3500 STEWART PARKWAY, SUITE 140
ROSEBURG, OREGON 97470
JANUARY 2, 2001
PROJECT KEY *10846
SHEET 5 OF 6

MAP FILE M136-27E

MAP FILE M136-27E