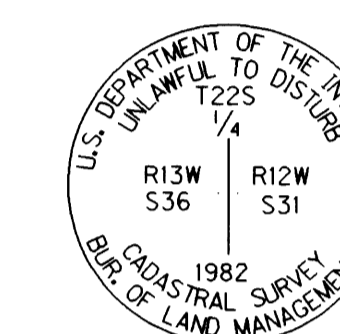
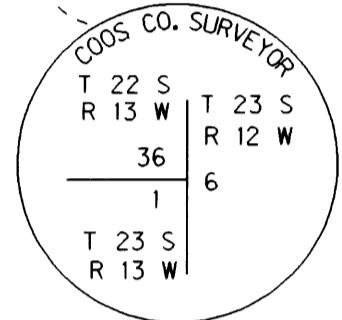
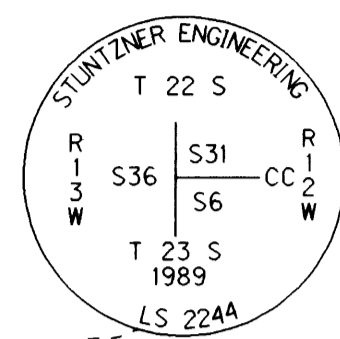


SE 1/4, Sec. 36, T.22 S., R.13 W., W.M.
W 1/2, Sec. 31, T.22 S., R.12 W., W.M.

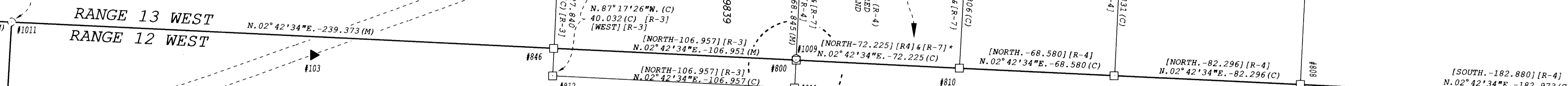
FILED
Date: 4/13/1998 By: JP
This survey consists of: 3 SHEETS
Map: M124-77C
Narrative: _____
Corner Plat: _____
S. DOUGLAS COUNTY SURVEYOR



METRIC CONVERSION
0.3048 METERS PER FOOT
EXACTLY

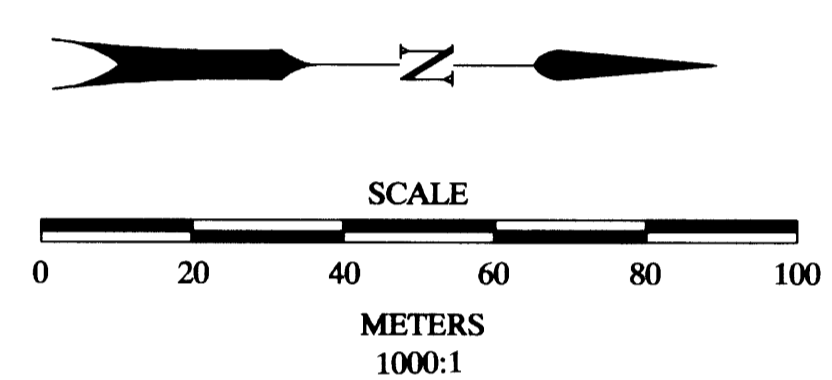


RANGE 13 WEST
RANGE 12 WEST



*THE DISTANCE OF 102.705 SHOWN ON (R-4) APPEARS TO BE IN ERROR WHEN COMPARED TO OUR OVERALL MEASURED DISTANCE AND THE ONE SHOWN ON (R-7) BY HINTZ. SEE NOTE

SEE DETAIL "A"



SEE SHEET 2 OF 3

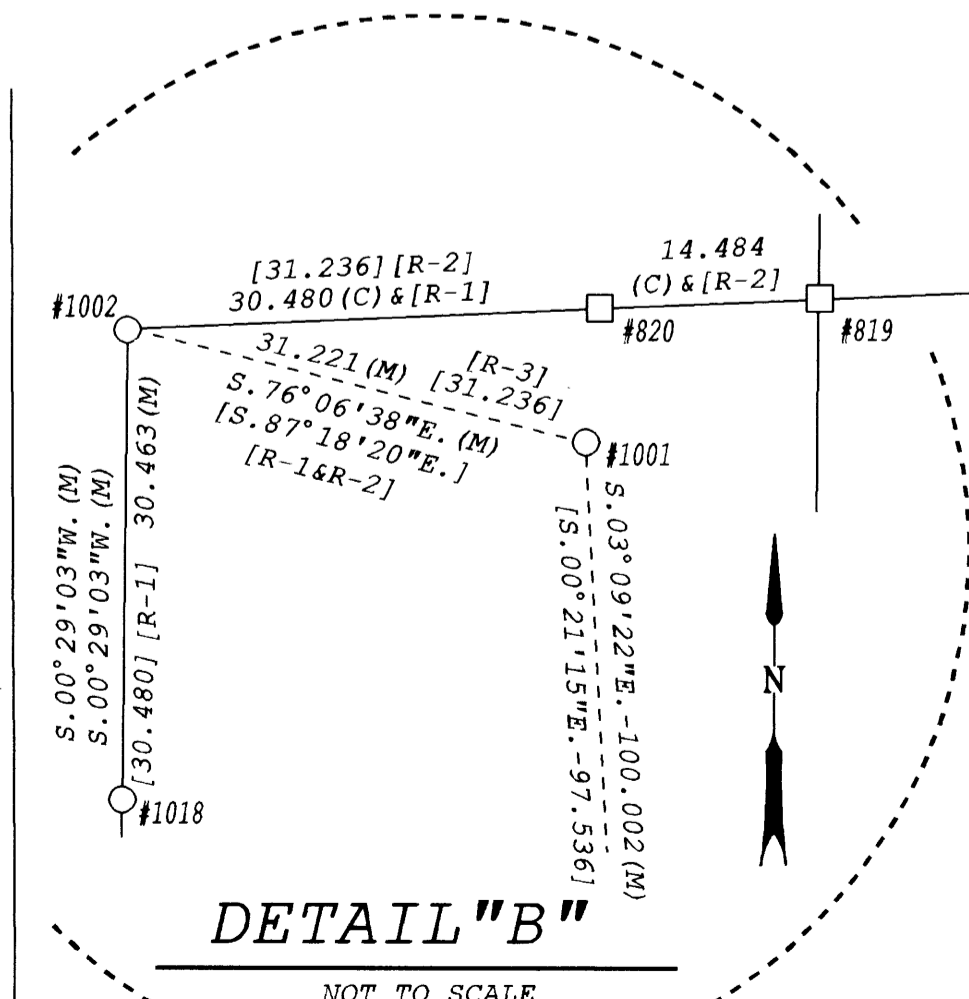
EXISTING RIGHT OF WAY
LOCATED CENTERLINE
EXISTING RIGHT OF WAY

LEGEND

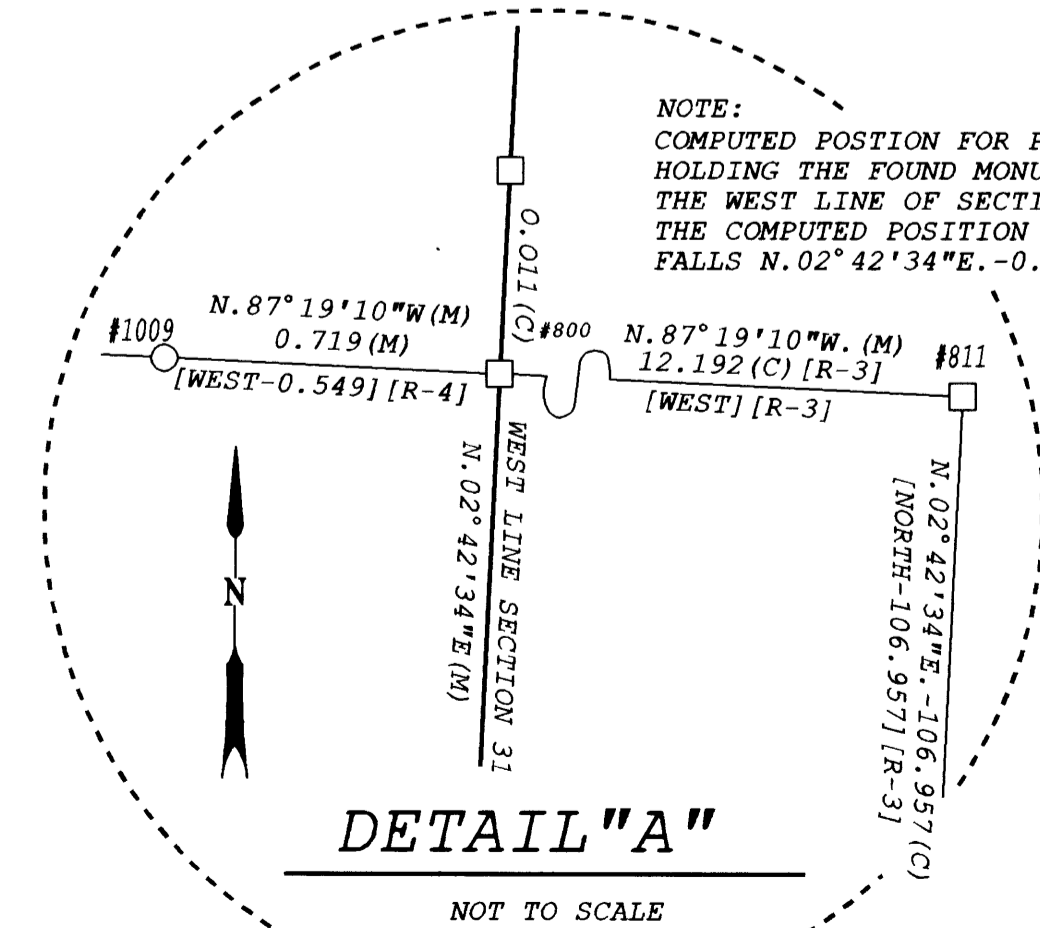
- (C) INDICATES COMPUTED DATA
- (R) INDICATES RECORD DATA
- (M) MEASURED THIS SURVEY
- [] EMBRACES RECORD DATA
- ▲ SET CONTROL POINT
- △ FOUND DCSD MONUMENT USED AS CONTROL POINT
- COMPUTED POINT AS DESCRIBED
- △ FOUND ODOT CONTROL POSITION AS DESCRIBED
- RIGHT-OF-WAY
- - - EDGE OF PAVEMENT
- FOUND MONUMENT NOTED IN LIST

REGISTERED PROFESSIONAL LAND SURVEYOR
EDWARD K. HALL
EXPIRES 30 JUNE 1999

SEE DETAIL "B"



DETAIL "B"
NOT TO SCALE



DETAIL "A"
NOT TO SCALE

RECORD LEGEND

- [R-1] = CS 51/267-3
- [R-2] = CS 51/276-2
- [R-3] = CS 55/38-4
- [R-4] = CS 58/121-3
- [R-5] = ODOT R/W MAP 78-II-7
- [R-6] = M 109-50
- [R-7] = CS 55/194-1

COOS COUNTY
DOUGLAS COUNTY
TOWNSHIP 23 SOUTH
TOWNSHIP 22 SOUTH

EDITED EKH 19 FEB 1998

OREGON DEPARTMENT OF TRANSPORTATION
MONUMENT RECOVERY AND CONTROL MAP
COUNTY LINE SLIDE

O.D.O.T. CREW 3811 COQUILLE
307 HWY. 42E COQUILLE, OR. 97423
O.D.O.T. KEY NO. 09807 SHEET 3 OF 3