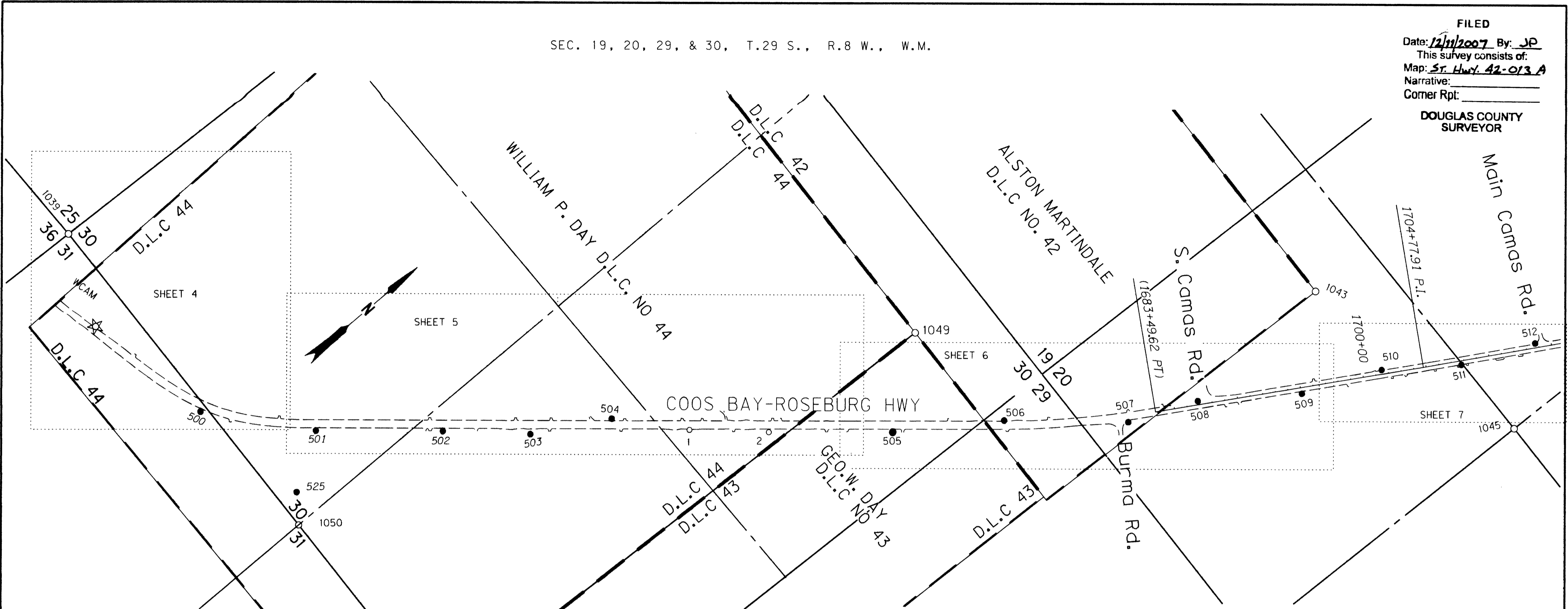


FILED
 Date: 12/11/2007 By: JP
 This survey consists of:
 Map: St. Hwy. 42-013 A
 Narrative: _____
 Corner Rpt: _____

DOUGLAS COUNTY
 SURVEYOR



CONTROL NETWORK SCHEMATIC
 NOT TO SCALE

REGISTERED
 PROFESSIONAL
 LAND SURVEYOR
James M. Stanley
 OREGON
 JULY 11, 2000
 JAMES M. STANLEY
 49863LS
 EXPIRES 06/30/08

LEGEND	
()	RECORD DATA PER ODOT 9B-30-17
[]	RECORD DATA AS PER ODOT 1A-15-45
○	FOUND MONUMENT NOTED IN TABLE
☆	FOUND GPS STATION
●	STRATEGIC POINT
---	EDGE OF PAVEMENT
---	ACCESS CONTROL LINE
---	PROPERTY LINE
---	1/4 SECTION LINE
---	SECTION LINE
---	DLC THIS SIDE
---	DLC LINE
---	DLC BOTH SIDES
---	1/16 LINE/GOVT LOT

RECOVERED MONUMENT LIST

PT. NO.	LDP NORTHING	LDP EASTING	ELEV.	STATION	OFFSET	DATE	DESCRIPTION	REFERENCE
1039	506383.95	4085666.17				5/24/2006	FD. 1 1/4" O.D. IRON PIPE WITH 2 1/2" BRASS DISK STAMPED "COUNTY SURVEYORS OFFICE T28S R9W, R8W S25, S30, S36, S31 BLM 1965 1962" 1.0 FT. ABOVE SURFACE IN GOOD CONDITION	CS 49/139
1043	513575.76	4072307.15	1697+41.58	-724.33	5/23/2006	FD. 5/8" IRON ROD 0.5 FT. BELOW A.C. SURFACE BENT BADLY EASTERLY TIED WHERE ENTERS GROUND NE CORNER A. MARTINDALE DLC #42	CS 54/38	
1045	514079.05	4074130.82	1710+97.87	594.69	5/23/2006	FD. 1 1/2" I.D. IRON PIPE 0.2 FT. ABOVE SURFACE IN GOOD CONDITION CENTER 1/4 COR. SEC. 20	M1-63	
1049	510966.25	4070534.99			5/31/2006	FD. 2 1/2" O.D. PIPE WITH A 3 1/4" BRASS DISK STAMPED "U.S. DEPT. OF THE INTERIOR BUR. OF LAND MANAGEMENT UNLAWFUL TO DISTURB CADASTRAL SURVEY DL42 DL43 DL44 1965" .07 FT. ABOVE SURFACE GOOD CONDITION	VOL. 33 PG. 13886	
1050	506299.05	4088572.94			5/31/2006	FD. 2 3/8" O.D. PIPE WITH 3" BRASS DISK STAMPED "U.S. DEPT. OF THE INTERIOR BUR. OF LAND MANAGEMENT CADASTRAL SURVEY UNLAWFUL TO DISTURB T28S R9W 1/4 S30 S31 1965" .03 FT. ABOVE SURFACE GOOD CONDITION	VOL. 33 PG. 13886-87	

CONTROL MONUMENTS ALL OFFSETS WITH A - (MINUS) ARE FOR THE LEFT, WITHOUT IS FOR THE RIGHT BENCHMARKS P76 AND N741X (NAVD 88 ELEV.) WERE RECOVERED AND USED TO ESTABLISH ALL ELEVATIONS.

PT. NO.	LDP NORTHING	LDP EASTING	ELEV.	STATION	OFFSET	DATE	DESCRIPTION	REFERENCE
1	509123.84	4069975.33	1087.81			5/22/2006	FD. 5/8" IRON REBAR WITH 1 1/2" BRASS CAP FROM PREVIOUS ODOT SURVEY (TOM TAYLOR CREEK) STAMPED "ODOT CONTROL 1" 0.1 FT. ABOVE SURFACE IN GOOD CONDITION ORANGE ODOT CARSONITE POST NEARBY	
2	509587.99	4070390.01	1091.72			5/22/2006	FD. 5/8" IRON REBAR WITH 1 1/2" BRASS CAP FROM PREVIOUS ODOT SURVEY (TOM TAYLOR CREEK) STAMPED "ODOT CONTROL 2" 0.1 FT. ABOVE SURFACE IN GOOD CONDITION ORANGE ODOT CARSONITE POST NEARBY	
57	525200.30	4080155.34	1439.36			5/23/2006	FD. "MAG" NAIL AND WASHER STAMPED "ODOT 57" IN A.C. SHOULDER FROM PREVIOUS ODOT SURVEY (QUIET MTN. RD. - BENEDICT RD.) FLUSH WITH SURFACE IN GOOD CONDITION	
59	524284.84	4079585.36	1445.42			5/23/2006	FD. "MAG" NAIL AND WASHER STAMPED "ODOT 59" IN A.C. SHOULDER FROM PREVIOUS ODOT SURVEY (QUIET MTN. RD. - BENEDICT RD.) FLUSH WITH SURFACE IN GOOD CONDITION	
500	508280.89	4067398.57	1094.25			5/22/2006	SET 5/8" X 30" IRON REBAR WITH 1 1/2" BRASS CAP STAMPED "ODOT CONTROL 500" FLUSH WITH SURFACE	
501	508877.79	4068094.91	1090.16			5/22/2006	SET 5/8" X 30" IRON REBAR WITH 1 1/2" BRASS CAP STAMPED "ODOT CONTROL 501" FLUSH WITH SURFACE	
502	507637.30	4068738.93	1090.41			5/22/2006	SET 5/8" X 30" IRON REBAR WITH 1 1/2" BRASS CAP STAMPED "ODOT CONTROL 502" FLUSH WITH SURFACE	
503	508147.39	4069198.44	1090.14			5/22/2006	FD. 2 7/8" BRASS DISK IN CONCRETE STAMPED "DOUGLAS CO. SURVEYORS 1990" FLUSH WITH SURFACE GOOD STABILITY BUT HAS BEEN HIT BY MOWER ABANDONED BY DOUGLAS COUNTY SURVEYORS OFFICE WE STAMPED "503" WITH PERMISSION FROM THE DOUGLAS COUNTY SURVEYORS OFFICE	
504	508712.59	4069515.50	1088.05			5/22/2006	SET 5/8" X 30" IRON REBAR WITH 1 1/2" BRASS CAP STAMPED "ODOT CONTROL 504" FLUSH WITH SURFACE	
505	510330.58	4071016.48	1094.68			5/22/2006	SET 5/8" X 30" IRON REBAR WITH 1 1/2" BRASS CAP STAMPED "ODOT CONTROL 505" FLUSH WITH SURFACE STABILIZED IN CONCRETE	
506	511057.90	4071509.08	1094.15			5/22/2006	SET 5/8" X 30" IRON REBAR WITH 1 1/2" BRASS CAP STAMPED "ODOT CONTROL 506" FLUSH WITH SURFACE	
507	511794.07	4072145.84	1112.88			5/22/2006	SET 5/8" X 30" IRON REBAR WITH 1 1/2" BRASS CAP STAMPED "ODOT CONTROL 507" 0.1 FT. BELOW SURFACE	
508	512329.52	4072359.50	1122.05	1686+95.50	-44.94	5/22/2006	SET 5/8" X 30" IRON REBAR WITH 1 1/2" BRASS CAP STAMPED "ODOT CONTROL 508" 0.1 FT. BELOW SURFACE	
509	512978.88	4072851.29	1125.71	1695+04.80	47.96	5/22/2006	SET 5/8" X 30" IRON REBAR WITH 1 1/2" BRASS CAP STAMPED "ODOT CONTROL 509" FLUSH WITH SURFACE	
510	513577.76	4073111.44	1130.06	1701+52.88	-33.04	5/23/2006	SET 1" DIA. BRASS PLUG IN CONCRETE SIDEWALK STAMPED "ODOT CONTROL 510" FLUSH WITH SURFACE	
511	514082.70	4073482.57	1137.78	1707+75.95	32.01	5/23/2006	SET 1" DIA. BRASS PLUG IN CONCRETE SIDEWALK STAMPED "ODOT CONTROL 511" FLUSH WITH SURFACE	
512	514635.73	4073725.50	1141.76	1713+76.25	-35.13	5/23/2006	SET 1" DIA. BRASS PLUG IN CONCRETE SIDEWALK STAMPED "ODOT CONTROL 512" FLUSH WITH SURFACE	
WCAM	506084.16	4068355.90	1071.73			5/22/2006	FD. 4" DIA. BRASS DISK IN CONCRETE STAMPED "FOR INFORMATION CONTACT ODOT OR COUNTY SURVEYOR OREGON PRIMARY GPS STATION 1989 WCAM" 1.0 FT. BELOW SURFACE IN GOOD CONDITION	DCSO GPS 27/83

SI FEET
T OREGON DEPARTMENT OF TRANSPORTATION
 HORIZONTAL CONTROL, RECOVERY AND RETRACEMENT MAP
 OR42: HARD CASH LN. - QUIET MOUNTAIN RD. RESURFACING
 COOS BAY - ROSEBURG HWY
 DOUGLAS COUNTY
 FILE: 13791RW.DGN
 FOR ODOT REGION 3
 3500 NW. STEWART PKWY.
 ROSEBURG, OR. 97470
 DEC. 7, 2007
 SHEET 1 OF 11