

SW 1/4 SECTION 18 T22S R9W WM

FILED

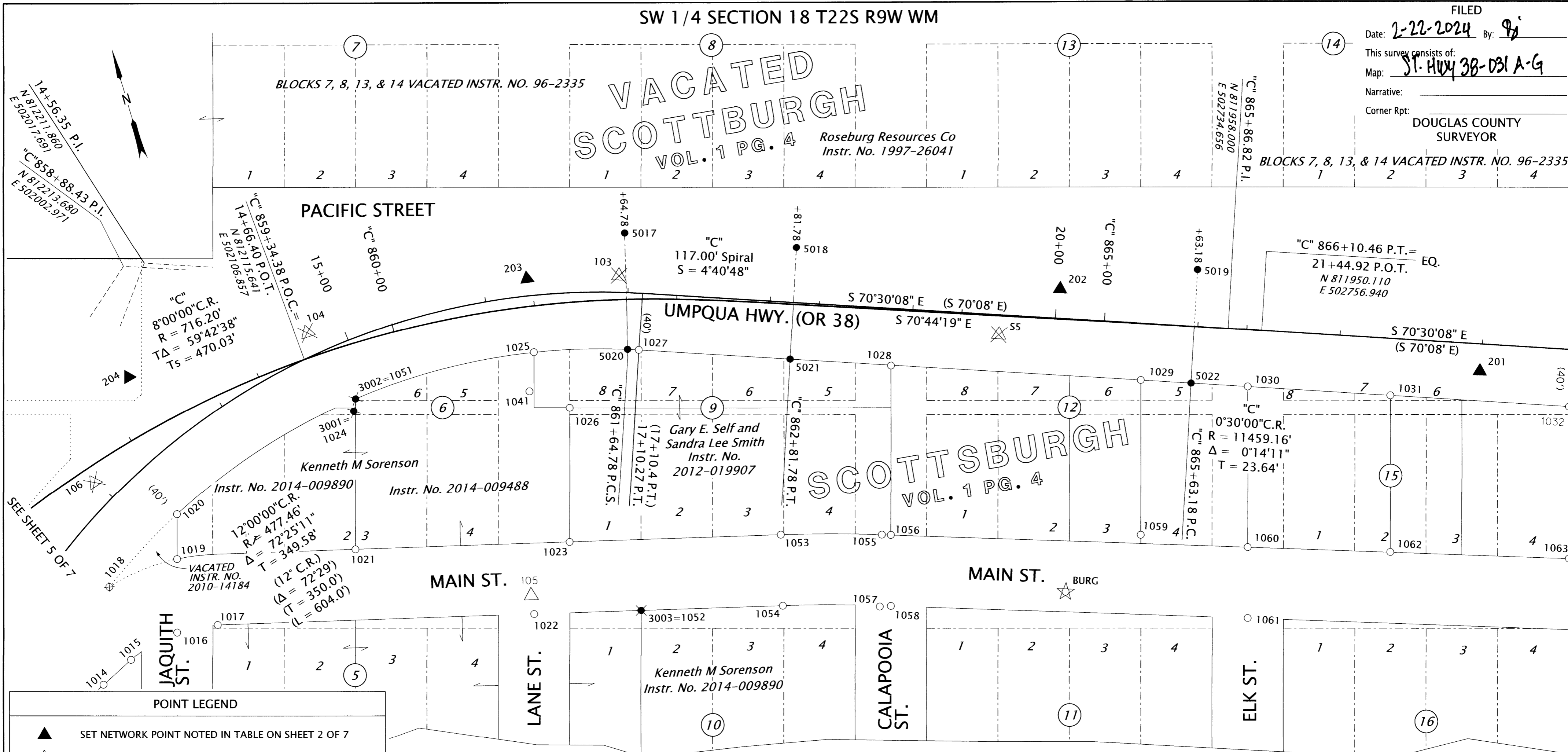
Date: 2-22-2024 By: PJ

This survey consists of:
Map: ST. HWY 38-031 A-G

Narrative:
Corner Rpt: DOUGLAS COUNTY SURVEYOR

BLOCKS 7, 8, 13, & 14 VACATED INSTR. NO. 96-2335

VACATED SCOTTSBURGH VOL. 1 PG. 4
Roseburg Resources Co Instr. No. 1997-26041



POINT LEGEND

- ▲ SET NETWORK POINT NOTED IN TABLE ON SHEET 2 OF 7
- △ FOUND NETWORK POINT NOTED IN TABLE ON SHEET 2 OF 7
- ⊗ DESTROYED NETWORK POINT
- ☆ FOUND GPS POINT NOTED IN TABLE ON SHEET 2 OF 7
- FOUND MONUMENT NOTED IN TABLE ON SHEET 7 OF 7
- SET MONUMENT NOTED IN TABLE
- ⊕ DESTROYED MONUMENT NOTED IN TABLE ON SHEET 7 OF 7
- ⊛ RESET MONUMENT NOTED IN TABLE

RECORD DATA LEGEND

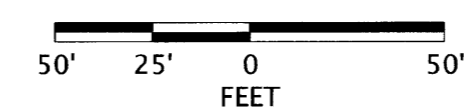
- (XX) RECORD DATA PER ODOT DRG. 2C-1-16
- ((XX)) RECORD DATA PER ODOT DRG. 4B-21-24 & DEED 95-236
- [XX] RECORD DATA PER ODOT DRG. 2B-24-20

SEE SHEET 7 FOR RECOVERED MONUMENTS TABLE
SEE SHEET 2 FOR CONTROL TABLE AND LINE LEGEND

SET MONUMENT TABLE RP = REFERENCE POINT

PT. NO.	STATION	OFFSET	OCRS NORTHING	OCRS EASTING	DATE	DESCRIPTION
3001	14+83.41	47.49	812071.17	502130.06	12/20/2023	SET 5/8" X 30" REBAR w/ 2" ALUMINUM CAP STAMPED "ODOT RESET" (RESET OF POINT 1024)
3002	14+88.42	40.11	812079.08	502133.61	12/20/2023	SET 5/8" X 30" REBAR w/ 2" ALUMINUM CAP STAMPED "ODOT RESET" (RESET OF POINT 1051)
3003	-	-	811881.01	502284.81	12/20/2023	SET 5/8" X 30" REBAR w/ 2" ALUMINUM CAP STAMPED "ODOT RESET" (RESET OF POINT 1052)
5017	"C" 861+64.78	-46.71	812139.40	502347.03	12/21/2023	SET 5/8" X 30" REBAR w/ 2" ALUMINUM CAP STAMPED "ODOT RP"
5018	"C" 862+81.78	-40.00	812096.39	502459.89	12/21/2023	SET 5/8" X 30" REBAR w/ 2" ALUMINUM CAP STAMPED "ODOT RP"
5019	"C" 865+63.18	-40.00	812003.56	502725.53	12/21/2023	SET 5/8" X 30" REBAR w/ 2" ALUMINUM CAP STAMPED "ODOT RP"
5020	"C" 861+64.78 17+01.63	35.28 40.00	812060.05	502326.38	12/21/2023	SET 5/8" X 30" REBAR w/ 2" ALUMINUM CAP STAMPED "ODOT RIGHT OF WAY"
5021	"C" 862+81.78 18+16.40	38.74 40.00	812022.05	502433.91	12/21/2023	SET 5/8" X 30" REBAR w/ 2" ALUMINUM CAP STAMPED "ODOT RIGHT OF WAY"
5022	"C" 865+63.18 20+97.80	39.90 40.00	811928.13	502699.18	12/21/2023	SET 5/8" X 30" REBAR w/ 2" ALUMINUM CAP STAMPED "ODOT RIGHT OF WAY"

UMPQUA RIVER



REGISTERED PROFESSIONAL LAND SURVEYOR
Andrew David Ausland
OREGON
JULY 15, 2003
ANDREW DAVID AUSLAND
56136
EXPIRES: 12/31/2025

State Of Oregon,
Department Of State Lands

OREGON DEPARTMENT OF TRANSPORTATION
RIGHT-OF-WAY BOUNDARY MONUMENTATION MAP
OR38: UMPQUA RIVER (SCOTTSBURGH) BRIDGE REPLACEMENT
UMPQUA HIGHWAY (MP 15.9 - MP 17.1)
DOUGLAS COUNTY

ODOT REGION 3 TECH CENTER
100 ANTELOPE ROAD
WHITE CITY, OREGON 97503

FEBRUARY 14, 2024
SCALE: 1" = 50'
SHEET 6 OF 7

KEY NO. 18578