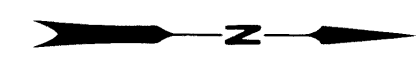


SEC. 7, T. 22 S, R. 9 W, W.M.

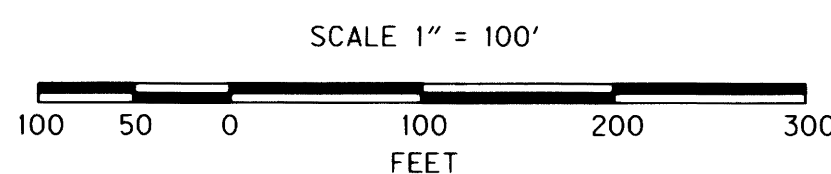
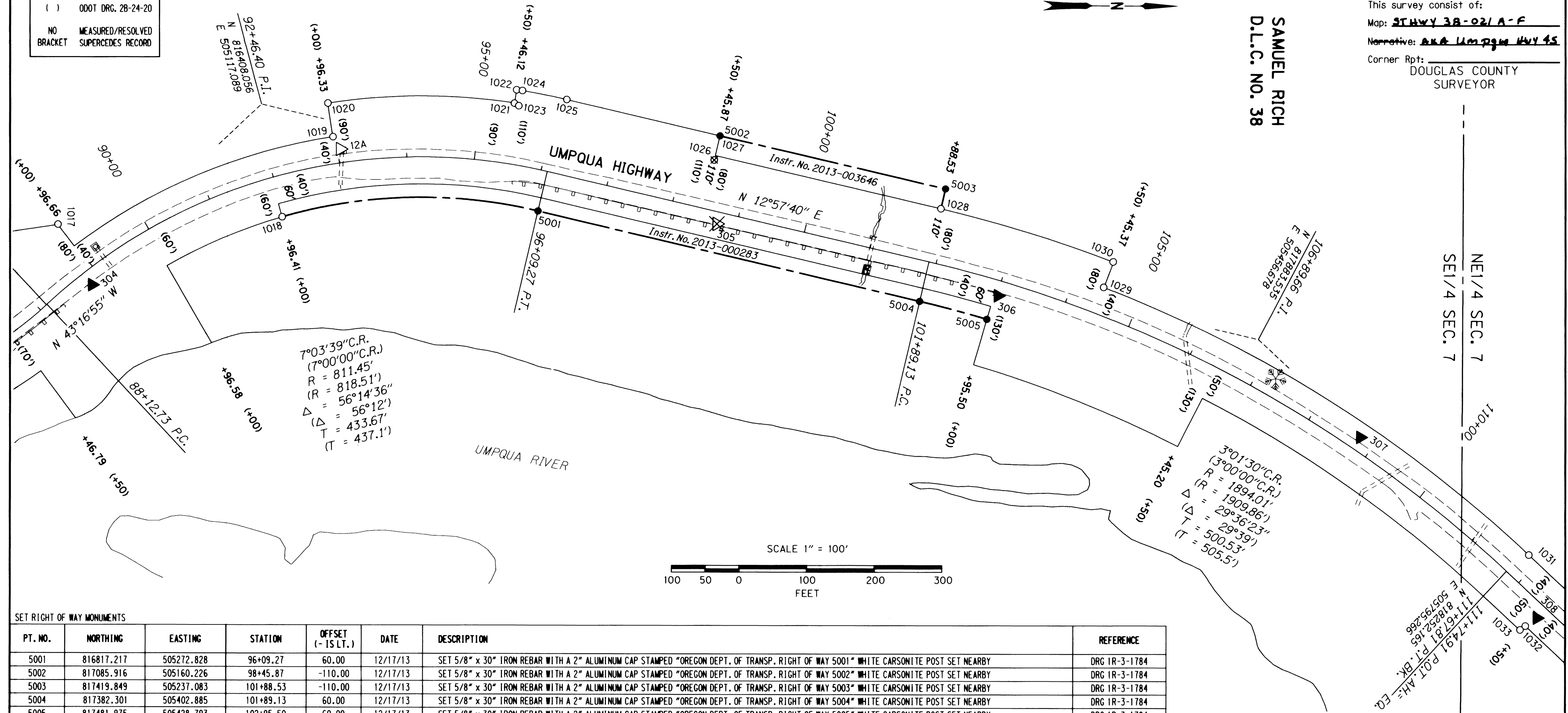
FILED

Date: 9-10-2014 By: JL  
 This survey consist of:  
 Map: STHWY 38-021A-F  
 Narrative: AKA Umpqua Hwy 45  
 Corner Rpt: DOUGLAS COUNTY SURVEYOR

RECORD DATA	
( )	ODOT DRG. 28-24-20
NO BRACKET	MEASURED/RESOLVED SUPERCEDES RECORD



SAMUEL RICH  
D.L.C. NO. 38



PT. NO.	NORTHING	EASTING	STATION	OFFSET (- IS LT.)	DATE	DESCRIPTION	REFERENCE
5001	816817.217	505272.828	96+09.27	60.00	12/17/13	SET 5/8" x 30" IRON REBAR WITH A 2" ALUMINUM CAP STAMPED "OREGON DEPT. OF TRANSP. RIGHT OF WAY 5001" WHITE CARSONITE POST SET NEARBY	DRG 1R-3-1784
5002	817085.916	505160.226	98+45.87	-110.00	12/17/13	SET 5/8" x 30" IRON REBAR WITH A 2" ALUMINUM CAP STAMPED "OREGON DEPT. OF TRANSP. RIGHT OF WAY 5002" WHITE CARSONITE POST SET NEARBY	DRG 1R-3-1784
5003	817419.849	505237.083	101+88.53	-110.00	12/17/13	SET 5/8" x 30" IRON REBAR WITH A 2" ALUMINUM CAP STAMPED "OREGON DEPT. OF TRANSP. RIGHT OF WAY 5003" WHITE CARSONITE POST SET NEARBY	DRG 1R-3-1784
5004	817382.301	505402.885	101+89.13	60.00	12/17/13	SET 5/8" x 30" IRON REBAR WITH A 2" ALUMINUM CAP STAMPED "OREGON DEPT. OF TRANSP. RIGHT OF WAY 5004" WHITE CARSONITE POST SET NEARBY	DRG 1R-3-1784
5005	817481.975	505428.793	102+95.50	60.00	12/17/13	SET 5/8" x 30" IRON REBAR WITH A 2" ALUMINUM CAP STAMPED "OREGON DEPT. OF TRANSP. RIGHT OF WAY 5005" WHITE CARSONITE POST SET NEARBY	DRG 1R-3-1784

PT. NO.	NORTHING	EASTING	ELEV.	STATION	OFFSET (- IS LT.)	DATE	DESCRIPTION	REFERENCE
12A	816524.538	505182.738	110.22	93+04.14	-20.26	7/12/11	FD 1" COPPER DISK STAMPED "ODOT CONTROL 12A" IN S.W. CORNER OF G2MA INLET	UNRECORDED
304	816158.919	505385.236	91.37	88+83.13	21.43	7/12/11	SET 5/8" x 30" IRON REBAR WITH A 1 1/2" BRASS CAP STAMPED "ODOT CONTROL 304" CARSONITE POST SET NEARBY	
305	817081.913	505290.214	112.21	98+71.12	17.57	12/17/13	DESTROYED MAG NAIL AND WASHER STAMPED "ODOT 305"	
306	817498.138	505394.059	108.58	103+01.41	22.13	7/12/11	SET 5/8" x 30" IRON REBAR WITH A 1 1/2" BRASS CAP STAMPED "ODOT CONTROL 306" CARSONITE POST SET NEARBY	
307	818035.101	505599.709	105.51	108+77.53	-19.62	7/12/11	SET 5/8" x 30" IRON REBAR WITH A 1 1/2" BRASS CAP STAMPED "ODOT CONTROL 307" CARSONITE POST SET NEARBY	

PT. NO.	NORTHING	EASTING	STATION	OFFSET (- IS LT.)	DATE	DESCRIPTION	REFERENCE
1017	816108.173	505296.231	88+97.12	-80.00	7/18/11	FD. 5/8" IRON ROD BENT SLIGHTLY TIED WHERE ROD ENTERS GROUND, 0.6 FT ABOVE SURFACE POOR CONDITION WHITE CARSONITE POST NEARBY	DRG 2B-24-20
1018	816439.308	505283.438	91+96.60	60.00	7/14/11	FD. 5/8" IRON ROD 0.2 FT ABOVE SURFACE GOOD CONDITION WHITE CARSONITE POST NEARBY	DRG 2B-24-20
1019	816513.853	505164.642	92+96.65	-39.79	7/14/11	FD. 5/8" IRON ROD 0.2 FT ABOVE SURFACE GOOD CONDITION WHITE CARSONITE POST NEARBY	DRG 2B-24-20
1020	816506.020	505115.186	92+96.74	-89.86	7/14/11	FD. 5/8" IRON ROD 0.7 FT ABOVE SURFACE GOOD CONDITION WHITE CARSONITE POST NEARBY	DRG 2B-24-20
1021	816781.671	505114.030	95+45.93	-89.52	7/18/11	FD. 5/8" IRON REBAR WITH 1 1/4" YELLOW PLASTIC CAP STAMPED "WOBBE PLS 1093" 0.1 FT ABOVE SURFACE GOOD CONDITION	W90-41
1022	816784.804	505094.131	95+46.07	-109.67	7/18/11	FD. 5/8" IRON REBAR WITH 1 1/4" YELLOW PLASTIC CAP STAMPED "WOBBE PLS 1093" BENT TIED WHERE ROD ENTERS GROUND, 1.1 FT ABOVE SURFACE POOR CONDITION	W90-41
1023	816788.123	505117.697	95+52.19	-86.88	7/18/11	FD. 5/8" IRON ROD 0.2 FT ABOVE SURFACE GOOD CONDITION WHITE CARSONITE POST NEARBY	DRG 2B-24-20
1024	816793.514	505095.166	95+53.80	-109.97	7/18/11	FD. 5/8" IRON ROD BENT BADLY TIED WHERE ROD ENTERS GROUND, 0.4 FT ABOVE SURFACE POOR CONDITION WHITE CARSONITE POST NEARBY	DRG 2B-24-20
1025	816859.134	505108.031	96+13.16	-110.00	7/18/11	FD. 5/8" IRON ROD BENT BADLY TIED WHERE ROD ENTERS GROUND, 0.8 FT ABOVE SURFACE POOR CONDITION WHITE CARSONITE POST NEARBY	DRG 2B-24-20
1026	817077.555	505196.158	98+45.78	-73.11	12/17/13	DESTROYED 5/8" IRON ROD LEANING SLIGHTLY 0.5 FT ABOVE SURFACE FAIR CONDITION	W90-41
1027	817085.948	505161.064	98+46.09	-109.19	7/27/11	FD. 5/8" IRON REBAR WITH 1 1/4" YELLOW PLASTIC CAP STAMPED "WOBBE PLS 1093" 0.1 FT ABOVE SURFACE GOOD CONDITION	W90-41
1028	817413.120	505266.318	101+88.53	-80.00	7/27/11	FD. 5/8" IRON ROD WITH 1 1/4" YELLOW PLASTIC CAP STAMPED "WOBBE PLS 1093" 0.2 FT BELOW SURFACE GOOD CONDITION	W90-41
1029	817654.449	505380.964	104+44.82	-40.00	7/27/11	FD. 5/8" IRON ROD 0.5 FT ABOVE SURFACE GOOD CONDITION WHITE CARSONITE POST NEARBY	DRG 2B-24-20
1030	817668.294	505343.374	104+44.50	-80.06	7/27/11	FD. 5/8" IRON ROD BENT TIED WHERE ROD ENTERS GROUND, 0.5 FT ABOVE SURFACE POOR CONDITION WHITE CARSONITE POST NEARBY	DRG 2B-24-20

**POINT LEGEND**

- ▲ SET NETWORK POINT
- △ FOUND NETWORK POINT
- ⊗ DESTROYED NETWORK POINT
- SET MONUMENT
- FOUND MONUMENT
- ⊗ DESTROYED MONUMENT

SEE SHEET I FOR BOUNDARY LINE LEGEND

REGISTERED PROFESSIONAL LAND SURVEYOR  
*Marshall R. Wagstaff*  
 OREGON  
 JANUARY 9, 2001  
 MARSHALL R. WAGSTAFF  
 49476  
 EXPIRES: 6/30/2016

**OREGON DEPARTMENT OF TRANSPORTATION**  
 HORIZONTAL CONTROL, RECOVERY, RETRACEMENT AND  
 RIGHT OF WAY BOUNDARY MONUMENTATION MAP  
 OR38: SCOTTSBURG - WELLS CREEK CURVE REALIGNMENT  
 UMPQUA HWY. NO. 45 M.P. 17.1 TO 19.1  
 DOUGLAS COUNTY  
 FILE: 16207RW.DGN

FOR ODOT REGION 3  
 3500 NW STEWART PKWY.  
 ROSEBURG, OR. 97470

SEPTEMBER 9, 2014  
 SCALE: 1" = 100'  
 SHEET 4 OF 6

(AKA UMPQUA HWY 45)

ST. HWY. 38-021 D