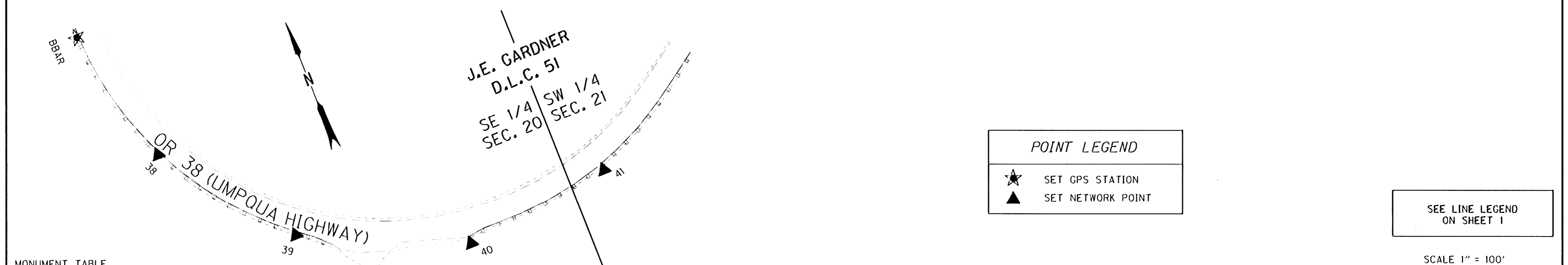
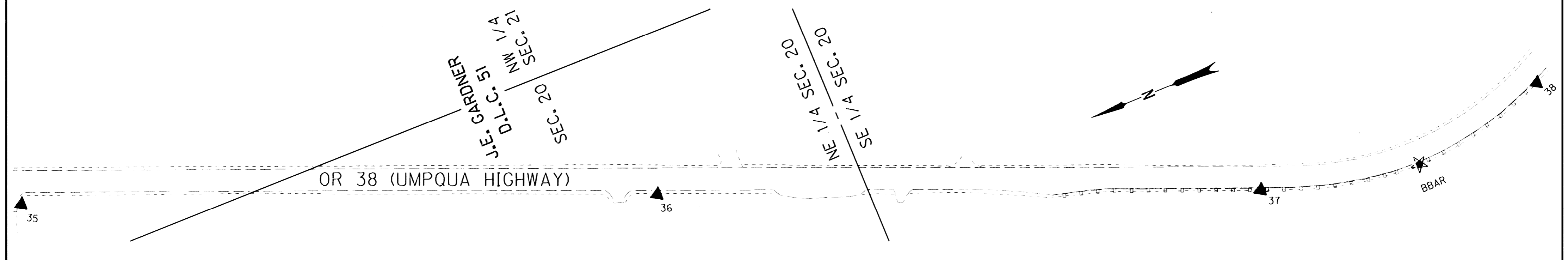
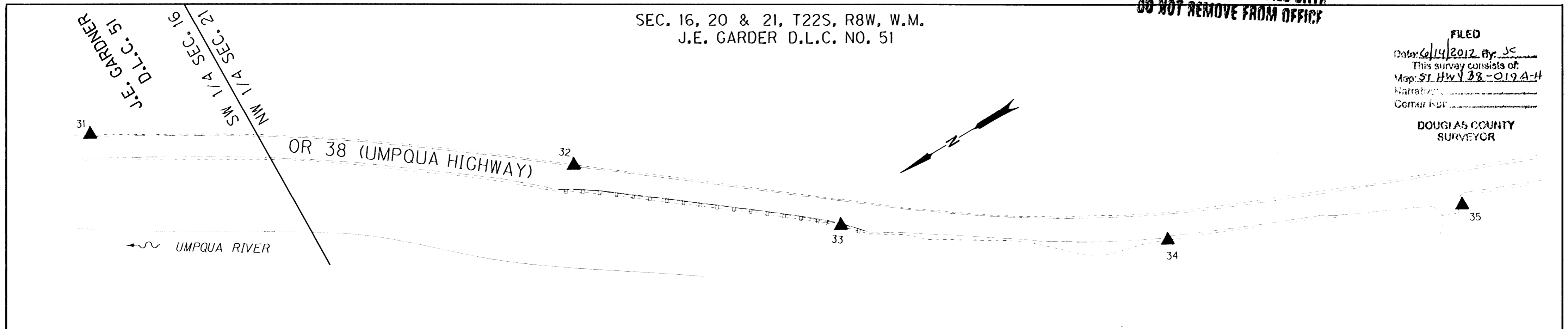


FILED  
Date: 6/14/2012 By: JC  
This survey consists of:  
Map: ST. HWY 38-019A-F  
Narrative:  
Corner Post:  
DOUGLAS COUNTY  
SURVEYOR

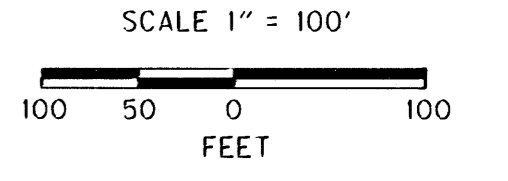
SEC. 16, 20 & 21, T22S, R8W, W.M.  
J.E. GARDNER D.L.C. NO. 51



**POINT LEGEND**

★	SET GPS STATION
▲	SET NETWORK POINT

SEE LINE LEGEND  
ON SHEET I



MONUMENT TABLE

PT. NO.	LDP NORTHING	LDP EASTING	DATE	DESCRIPTION	REFERENCE
32	809986.635	544561.981	2/18/11	SET 5/8" X 30" IRON REBAR WITH 1 1/2" BRASS CAP STAMPED "ODOT CONTROL 32" NORTH SIDE OF HIGHWAY.	
33	809693.639	544283.082	2/18/11	SET 5/8" X 30" IRON REBAR WITH 1 1/2" BRASS CAP STAMPED "ODOT CONTROL 33" NORTH SIDE OF ROADWAY BEHIND EAST END OF GUARDRAIL.	
34	809290.291	544018.308	2/18/11	SET 5/8" X 30" IRON REBAR WITH 1 1/2" BRASS CAP STAMPED "ODOT CONTROL 34" NORTH SIDE OF HIGHWAY.	
35	808890.609	543837.244	2/18/11	SET 5/8" X 30" IRON REBAR WITH 1 1/2" BRASS CAP STAMPED "ODOT CONTROL 35" SOUTH SIDE OF HIGHWAY AT BUNCH BAR ACCESS.	
36	808013.804	543498.828	2/18/11	SET 5/8" X 30" IRON REBAR WITH 1 1/2" BRASS CAP STAMPED "ODOT CONTROL 36" SOUTH SIDE OF HIGHWAY BETWEEN TWO PASTURE DRIVEWAYS.	
37	807184.452	543171.695	2/18/11	SET 5/8" X 30" IRON REBAR WITH 1 1/2" BRASS CAP STAMPED "ODOT CONTROL 37" SOUTH SIDE OF HIGHWAY BEHIND GUARDRAIL.	
38	808746.876	543165.344	2/18/11	SET 5/8" X 30" IRON REBAR WITH 1 1/2" BRASS CAP STAMPED "ODOT CONTROL 38" SOUTH SIDE OF HIGHWAY BEHIND GUARDRAIL.	
39	808580.454	543309.847	2/18/11	SET 5/8" X 30" IRON REBAR WITH 1 1/2" BRASS CAP STAMPED "ODOT CONTROL 39" SOUTH SIDE OF HIGHWAY BEHIND GUARDRAIL NEAR EAST END.	
40	808452.146	543545.955	2/18/11	SET 5/8" X 30" IRON REBAR WITH 1 1/2" BRASS CAP STAMPED "ODOT CONTROL 40" SOUTH SIDE OF HIGHWAY BEHIND GUARDRAIL AT WEST END.	
41	808479.705	543768.095	2/18/11	SET 5/8" X 30" IRON REBAR WITH 1 1/2" BRASS CAP STAMPED "ODOT CONTROL 41" SOUTH SIDE OF HIGHWAY BEHIND GUARDRAIL.	
BBAR	808952.127	543119.253	2/18/11	SET 5/8" X 30" IRON REBAR WITH 1 1/2" BRASS CAP STAMPED "ODOT CONTROL BBAR" STABILIZED IN CONCRETE SOUTH SIDE OF HIGHWAY BEHIND GUARDRAIL.	

REGISTERED  
PROFESSIONAL  
LAND SURVEYOR

*Mickey D. Calvert*  
OREGON  
NOV. 10, 2011  
MICKEY D. CALVERT  
75099  
EXPIRES: 12/31/2013

**SI FEET**  
**OREGON DEPARTMENT OF TRANSPORTATION**  
HORIZONTAL CONTROL MAP  
OR 38: SCOTTS CREEK TO ELKTON SLIDE PAVING  
UMPQUA HIGHWAY, NO. 45, OR38, M.P. 26.60-32.15  
DOUGLAS COUNTY  
FILE: I6203RW.DGN MODEL: CRR  
FOR ODOT REGION 3  
3500 NW. STEWART PKWY.  
ROSEBURG, OR. 97470  
JUNE 13, 2012  
SCALE: 1" = 100'  
SHEET 6 OF 8