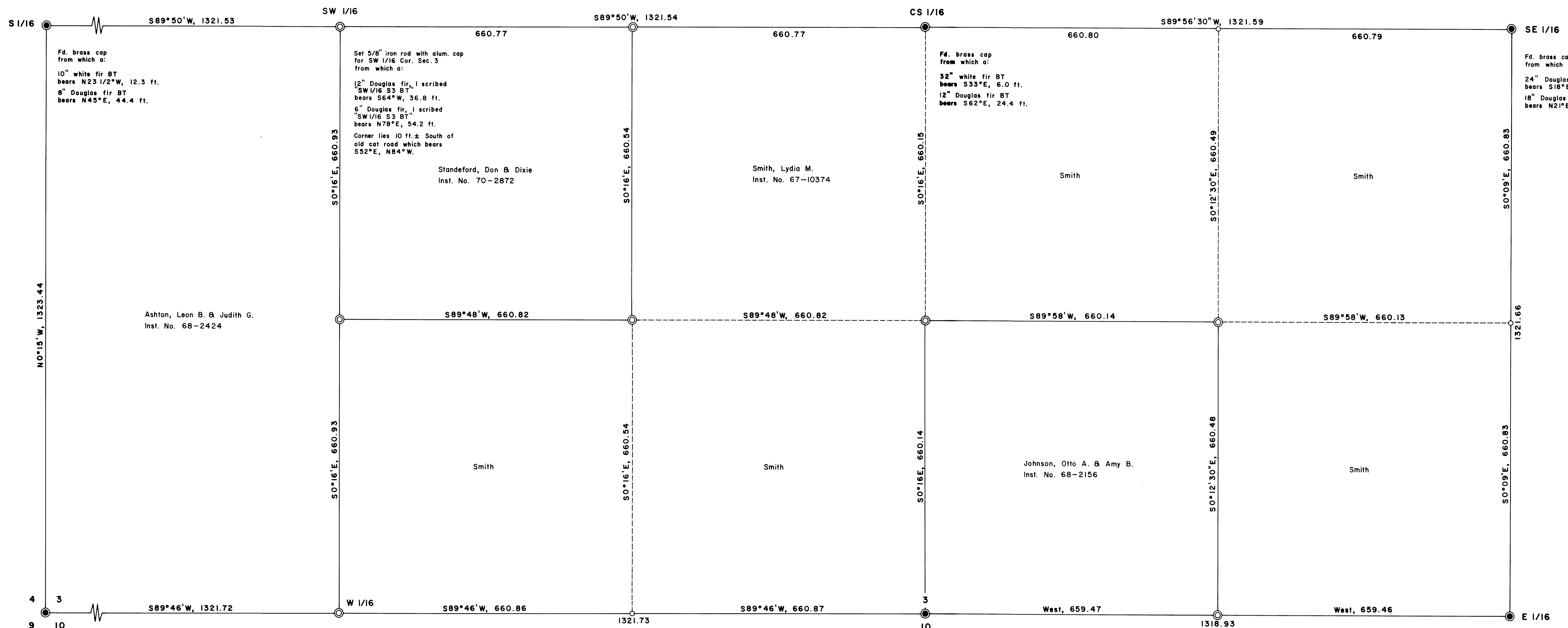


FILED
RECORDED
MAY 20 1975
COUNTY CLERK'S OFFICE
CLAS COUNTY, ORE.



Fd. brass cap from which a:
10" white fir BT bears N23 1/2°W, 12.3 ft.
8" Douglas fir BT bears N45°E, 44.4 ft.

Set 5/8" iron rod with alum. cap for SW 1/16 Cor. Sec. 3 from which a:
12" Douglas fir, 1 scribed SW 1/16 S3 BT bears S64°W, 36.8 ft.
6" Douglas fir, 1 scribed SW 1/16 S3 BT bears N78°E, 54.2 ft.
Corner lies 10 ft. ± South of old cat road which bears S52°E, N84°W.

Fd. brass cap from which a:
32" white fir BT bears S33°E, 6.0 ft.
12" Douglas fir BT bears S62°E, 24.4 ft.

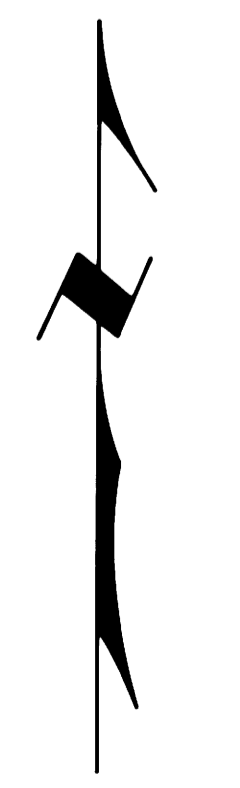
Fd. brass cap from which a:
24" Douglas fir BT bears S18°E, 70.2 ft.
18" Douglas fir BT bears N21°E, 47.5 ft.

Fd. brass cap from which a:
Original 36" Douglas fir BT stump bears N70°W, 8.6 ft.
28" Douglas fir BT bears N87 1/2°W, 8.1 ft.
Original 40" Douglas fir BT bears S60°W, 15.8 ft.
Parts of a white fir CSBT bears S9°E, 22.4 ft.
12" white fir BT bears S53°E, 26.5 ft.

Set 5/8" iron rod with alum. cap for W 1/16 Cor. Secs. 3 & 10 from which a:
10" Douglas fir, 1 scribed W 1/16 S10 BT bears S42°E, 22.1 ft.
12" Douglas fir, 1 scribed W 1/16 S3 BT bears N30°W, 55.0 ft.
Corner falls in middle of old logging road which bears North & South.

Fd. brass cap from which a:
Original 30" Douglas fir BT stump bears S64°E, 13.2 ft.
10" pencil cedar BT bears N10°E, 32.1 ft.
16" Douglas fir BT bears S52°W, 15.6 ft.

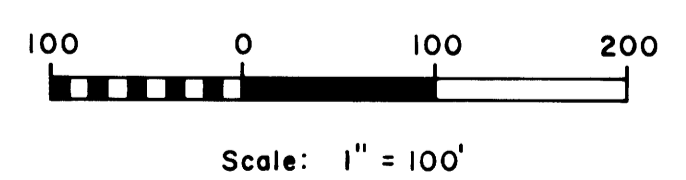
Fd. brass cap from which a:
8" Douglas fir BT bears N43 1/2°W, 27.8 ft.
6" Douglas fir BT bears S12 1/2°E, 31.7 ft.



**PROPERTY LINE SURVEY IN THE
SE 1/4 SW 1/4 & SW 1/4 SE 1/4,
SEC. 3, T. 29 S., R. 8 W., W. M.**

For: Lydia M. Smith
By: Shaner Engineering, Inc.

March 28, 1975



LEGEND

- Corner found ●
- Corner set (5/8 iron rod with aluminum cap) ⊙
- Corner computed, not set ○
- Property line
- Line computed, not run

Note: See CS Map File 42-67.

