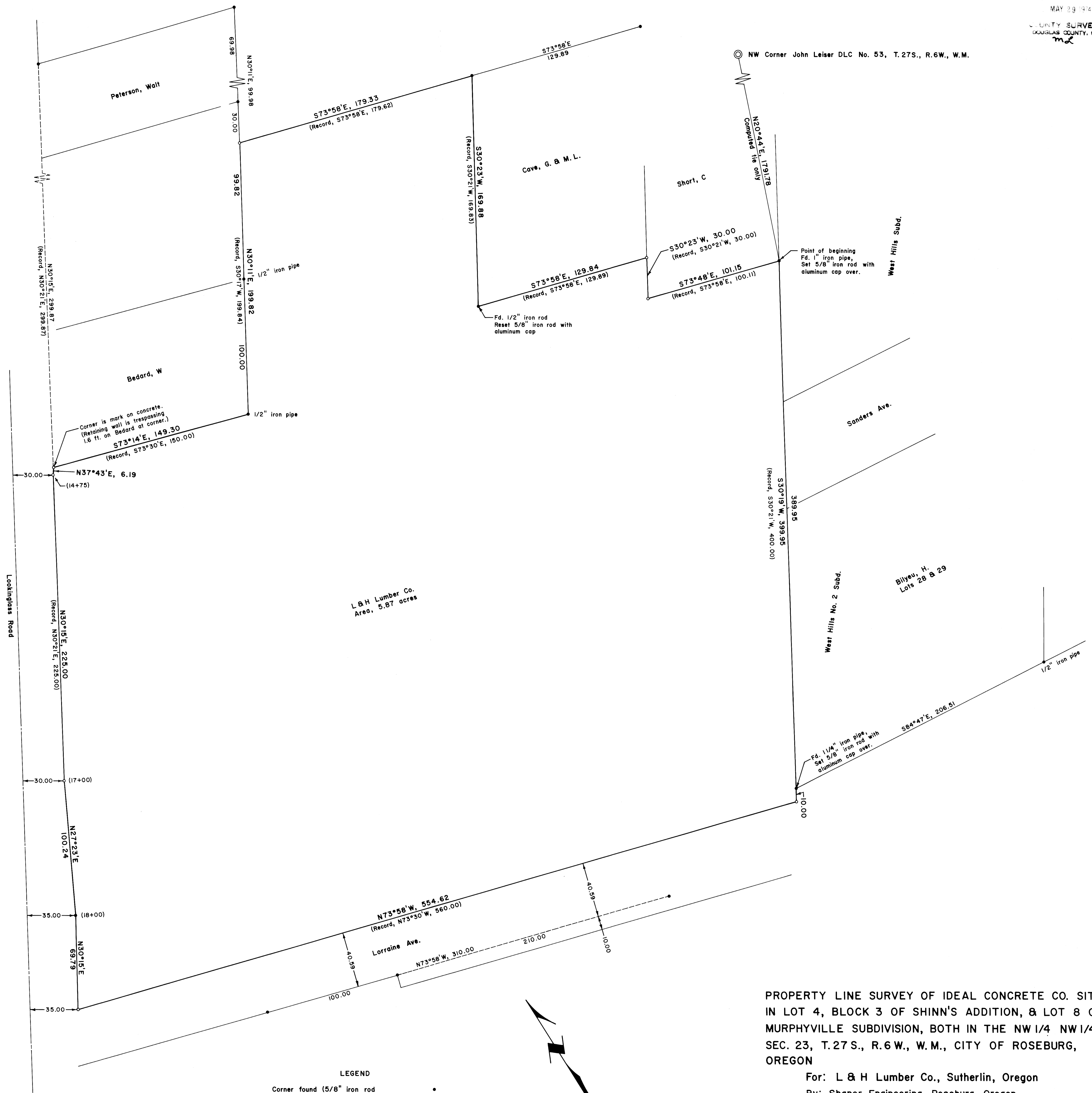


FILED  
RECEIVED 14  
MAY 29 1974  
COUNTY SURVEYOR  
DOUGLAS COUNTY, ORE.  
ml



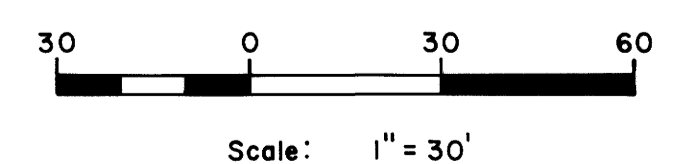
PROPERTY LINE SURVEY OF IDEAL CONCRETE CO. SITE  
IN LOT 4, BLOCK 3 OF SHINN'S ADDITION, & LOT 8 OF  
MURPHYVILLE SUBDIVISION, BOTH IN THE NW 1/4 NW 1/4  
SEC. 23, T.27 S., R.6 W., W.M., CITY OF ROSEBURG,  
OREGON

For: L & H Lumber Co., Sutherlin, Oregon  
By: Shaner Engineering, Roseburg, Oregon

May 28, 1974

LEGEND  
Corner found (5/8" iron rod unless otherwise noted) •  
Corner set (5/8" iron rod with aluminum cap) ○

Easements: No easements of record except one to Copco (PP&L).



Basis of bearings: Survey by  
Garrett, County Surveyor Map  
File M45-24.