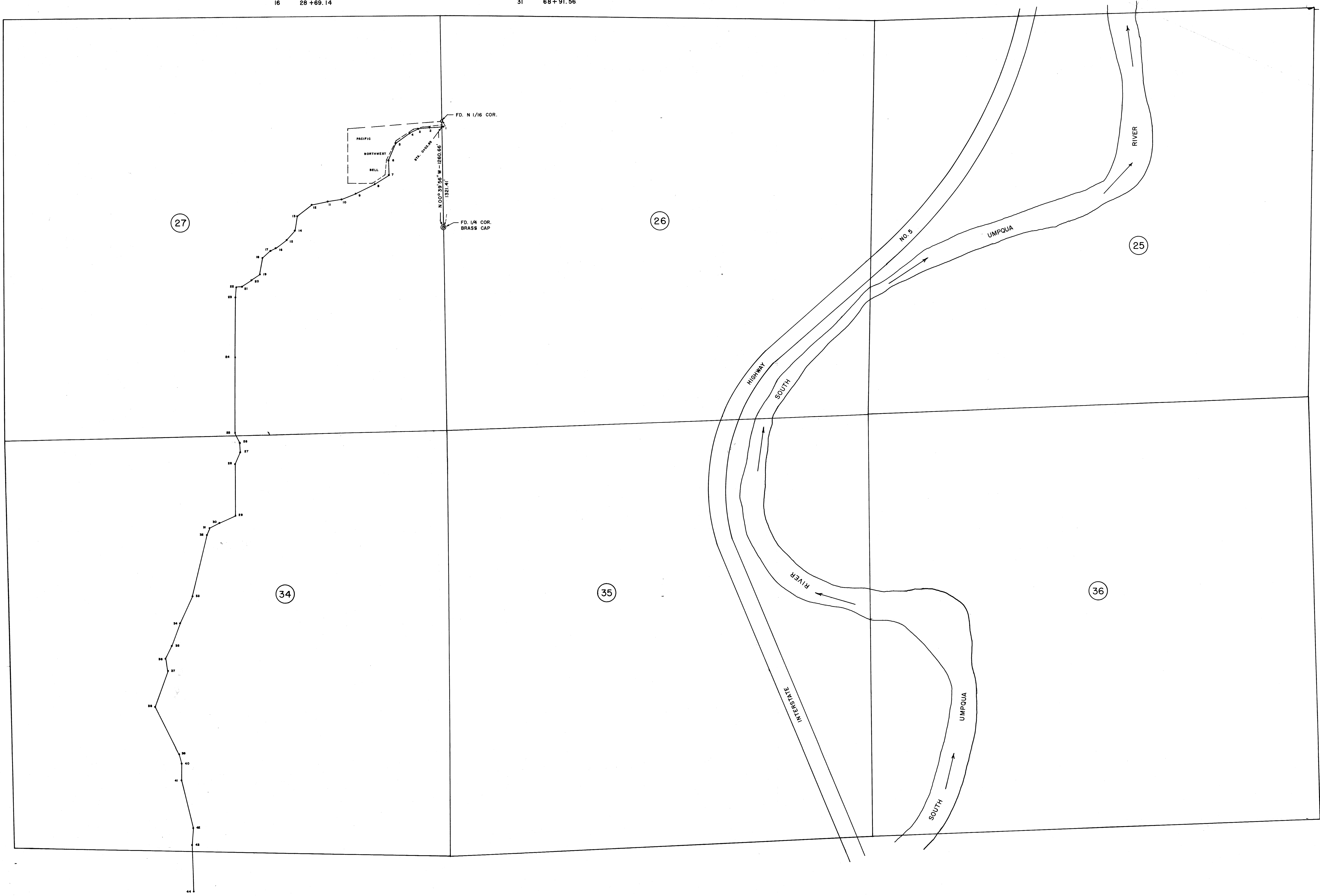


TABLE SHOWING BEARINGS AND DISTANCES OF ENGINEER'S SURVEY OF CENTERLINE OF 20 FEET WIDE RIGHT OF WAY

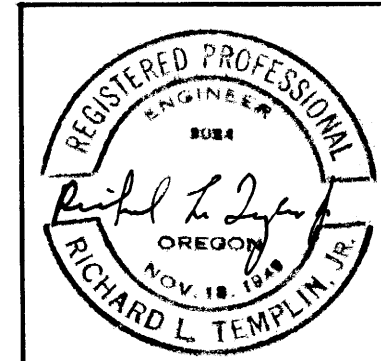
POINT	STATION	BEARING	DISTANCE	POINT	STATION	BEARING	DISTANCE	POINT	STATION	BEARING	DISTANCE
1	0+00	S 85° 08' 54" W	154.65'	16	28+69.14	S 63° 41' 11" W	77.44'	31	68+91.56	S 21° 07' 35" W	98.32'
2	1+54.65	S 81° 35' 11" W	143.90'	17	29+46.58	S 47° 31' 59" W	131.38'	32	69+89.88	S 13° 37' 53" W	781.06'
3	2+98.55	S 64° 28' 11" W	123.24'	18	30+77.96	S 10° 41' 35" W	217.14'	33	77+70.94	S 24° 42' 23" W	377.87'
4	4+21.79	S 53° 41' 29" W	219.60'	19	32+95.10	S 54° 44' 35" W	131.63'	34	81+48.81	S 19° 37' 23" W	298.08'
5	6+41.39	S 23° 28' 47" W	237.15'	20	34+26.73	S 55° 50' 47" W	139.16'	35	84+46.89	S 27° 01' 23" W	178.64'
6	8+78.54	S 02° 03' 13" E	181.47'	21	35+65.89	S 86° 25' 53" W	76.26'	36	86+25.53	S 10° 46' 07" E	148.19'
7	10+60.01	S 58° 40' 53" W	207.57'	22	36+42.15	S 04° 26' 53" W	124.61'	37	87+73.72	S 18° 50' 11" W	473.95'
8	12+67.58	S 63° 08' 47" W	263.48'	23	37+66.76	S 00° 05' 41" W	758.67'	38	92+47.67	S 27° 03' 55" E	668.50'
9	15+31.06	S 69° 03' 17" W	191.96'	24	45+25.43	S 00° 01' 23" W	946.40'	39	99+16.17	S 14° 08' 37" E	112.69'
10	17+23.02	S 82° 55' 29" W	179.46'	25	54+71.83	S 26° 06' 31" E	138.91'	40	100+28.86	S 00° 11' 37" E	208.50'
11	19+02.48	S 78° 08' 23" W	209.99'	26	56+10.74	S 03° 20' 19" E	117.63'	41	102+37.36	S 14° 01' 49" E	616.78'
12	21+12.47	S 51° 17' 23" W	224.51'	27	57+28.37	S 23° 59' 23" W	156.57'	42	108+54.14	S 03° 54' 47" W	211.70'
13	23+36.98	S 09° 46' 11" W	198.53'	28	58+84.94	S 00° 36' 25" E	643.04'	43	110+65.84	S 02° 02' 13" E	587.90'
14	25+35.51	S 42° 25' 23" W	156.07'	29	65+27.98	S 67° 34' 47" W	222.32'	44	116+53.74		
15	26+91.58	S 53° 09' 11" W	177.56'	30	67+50.30	S 62° 53' 05" W	141.26'				
16	28+69.14			31	68+91.56						

FILED  
RECEIVED 2/1  
JAN 28 1974  
COUNTY SURVEYOR  
DOUGLAS COUNTY, OREGON

C.S. File No. 554325  
MAP FILE # M 2 - 60



NOTE:  
--- INDICATES 5/8" DIAMETER IRON ROD SET WITH YELLOW PLASTIC CAP MKO. TEMPLIN RE 3024  
ALL BEARINGS ARE REFERRED TO THE TRUE MERIDIAN BASED UPON SOLAR OBSERVATIONS.



RICHARD L. TEMPLIN  
CONSULTING ENGINEER  
RIGHT OF WAY MAP  
BURIED TELEVISION CABLE  
LOCATED IN  
SECTIONS 26, 27 & 34 T. 27 S., R. 6 W., AND SECTION 3  
T. 28 S., R. 6 W., W.M., DOUGLAS COUNTY, OREGON  
Surveyed For: Southern Oregon Cable T.V.  
Scale: 1" = 500' December 27, 1973

MAP FILE # M 2 - 60