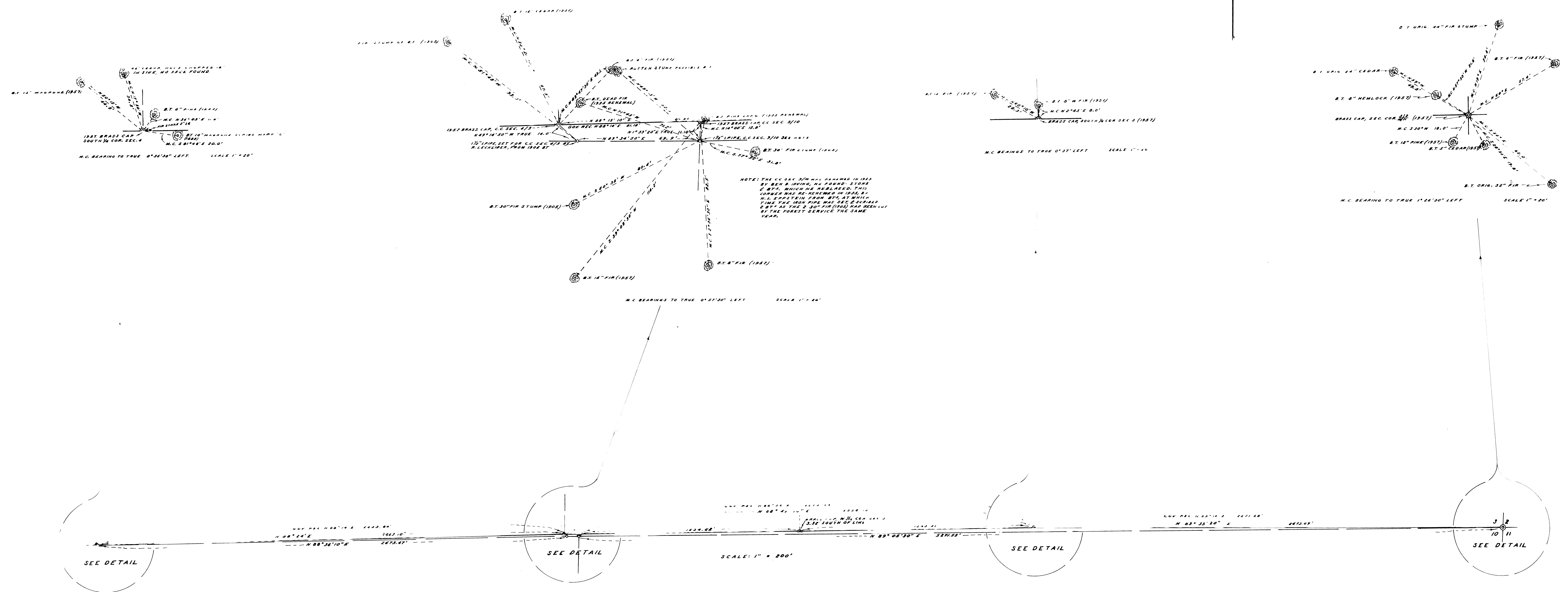


NOTE: BEARINGS ARE TRUE BASED ON A SOLAR OBSERVATION TAKEN AUG. 12, 1960, EXCEPT AS NOTED.

THE BEARINGS & DISTANCES MARKED "OLD REC." ARE TAKEN FROM THE OLD PLAT OF THE SURVEY MADE BY HAROLD D. CORBIN JULY 1857 TO AUGUST 1857, & APPROVED MAY 1, 1859.



COUNTY SURVEYOR'S OFFICE
DOUGLAS COUNTY, OREGON

RETRACEMENT OF SECTION LINE,
BETWEEN SEC 3 & 10, & SEC. 4 & 9
T. 27 S., R. 2 W. W. M.

FRED M. DARBY COUNTY SURVEYOR
SURVEYED AUG. 12, 1960 BY
JAMES W. BYRON DEPUTY SCALE AS SHOWN
SURVEYED FOR DOUGLAS COUNTY

