

# PROPERTY LINE SURVEY IN LOTS 1, 2, 3, 4, 5, BLOCK A, UMPQUA PARK FRUITLANDS N 1/2 SEC. 35, T. 27 S., R. 6 W., W. M.

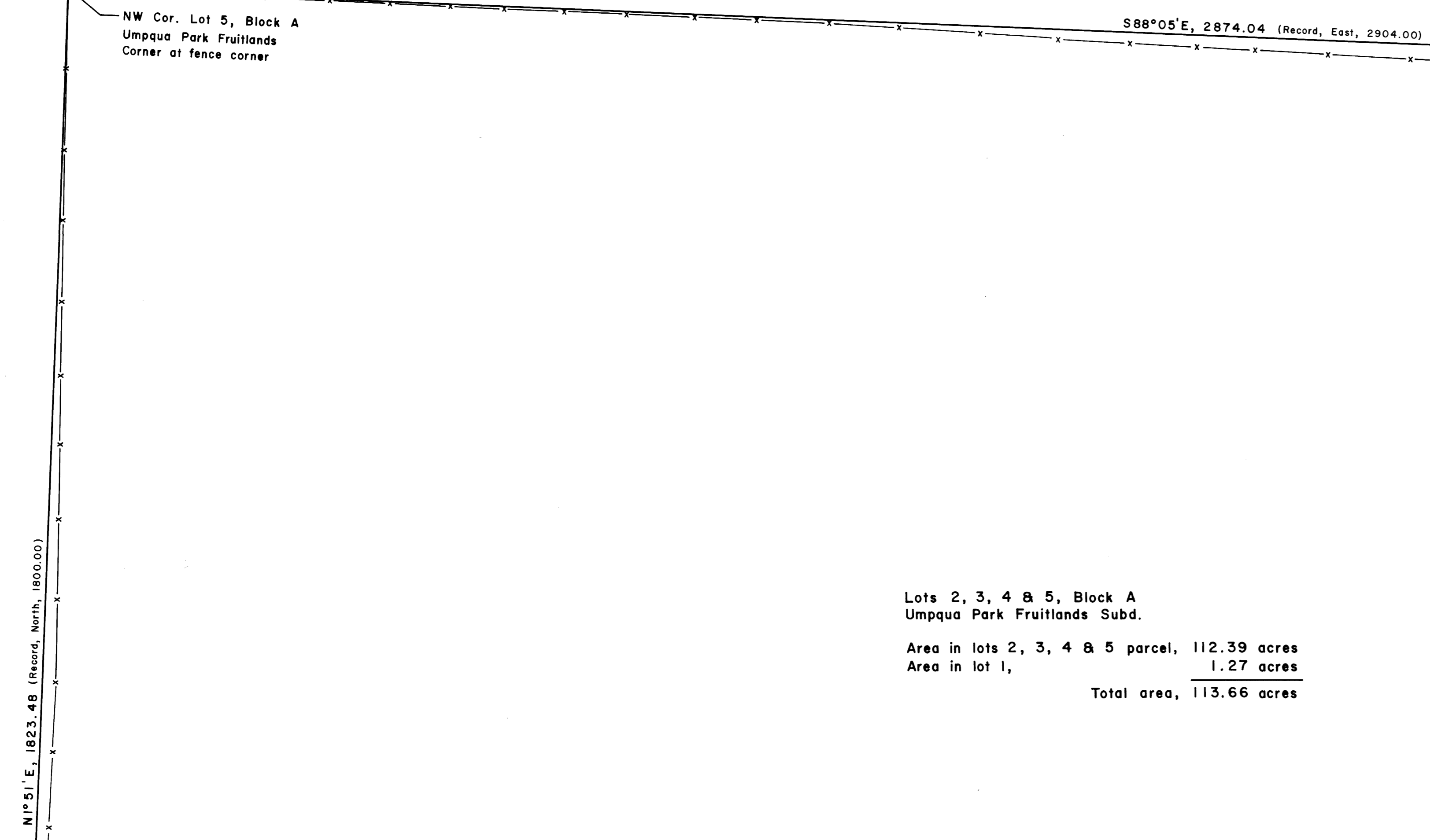
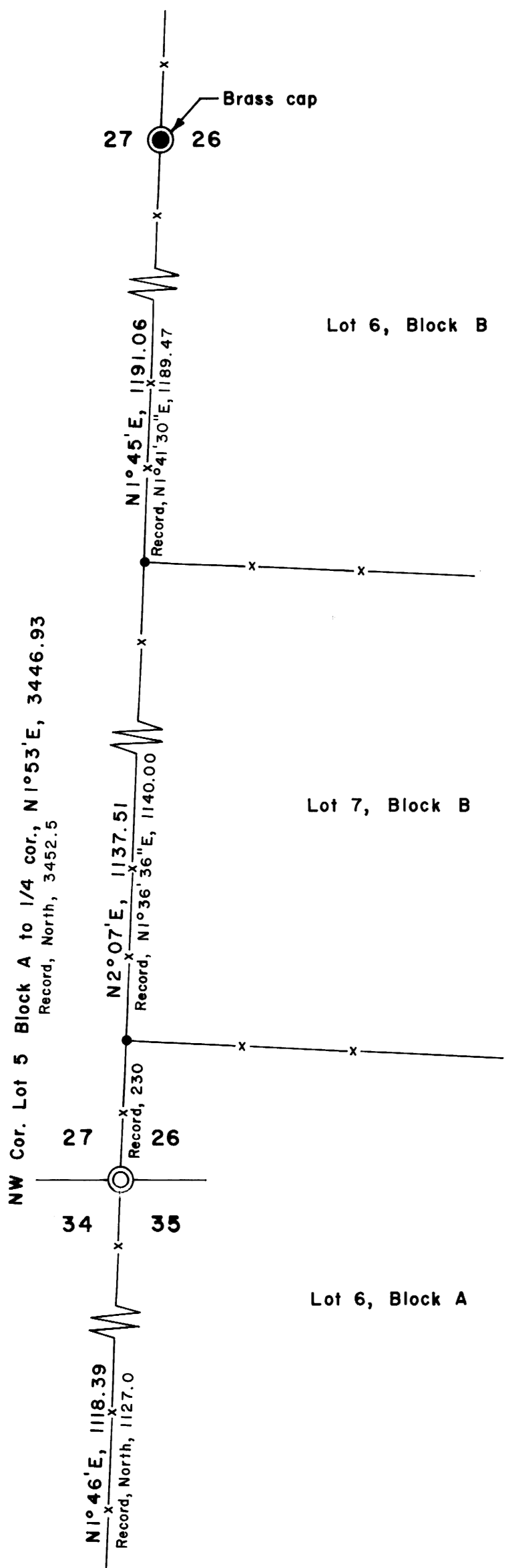
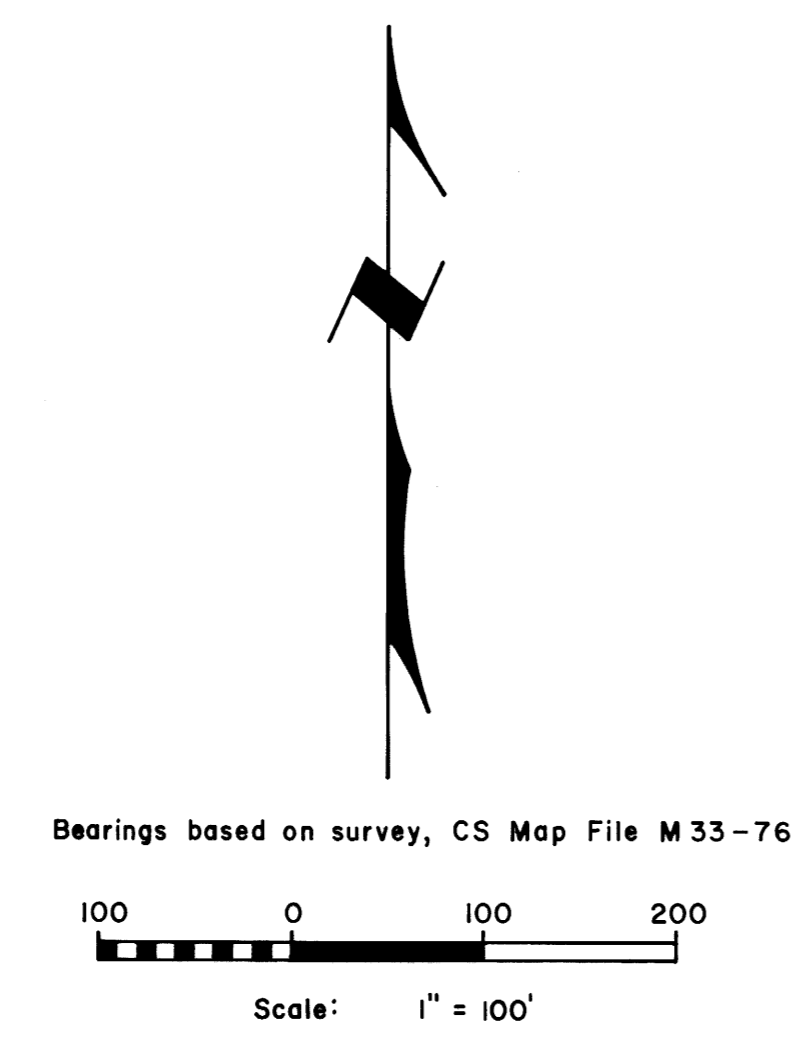
For: Wm. Mc Lain  
By: Shaner Engineering

October 3, 1973

FILED  
RECEIVED  
OCT 4 1973  
COUNTY SURVEYOR  
DOUGLAS COUNTY, ORE.  
M

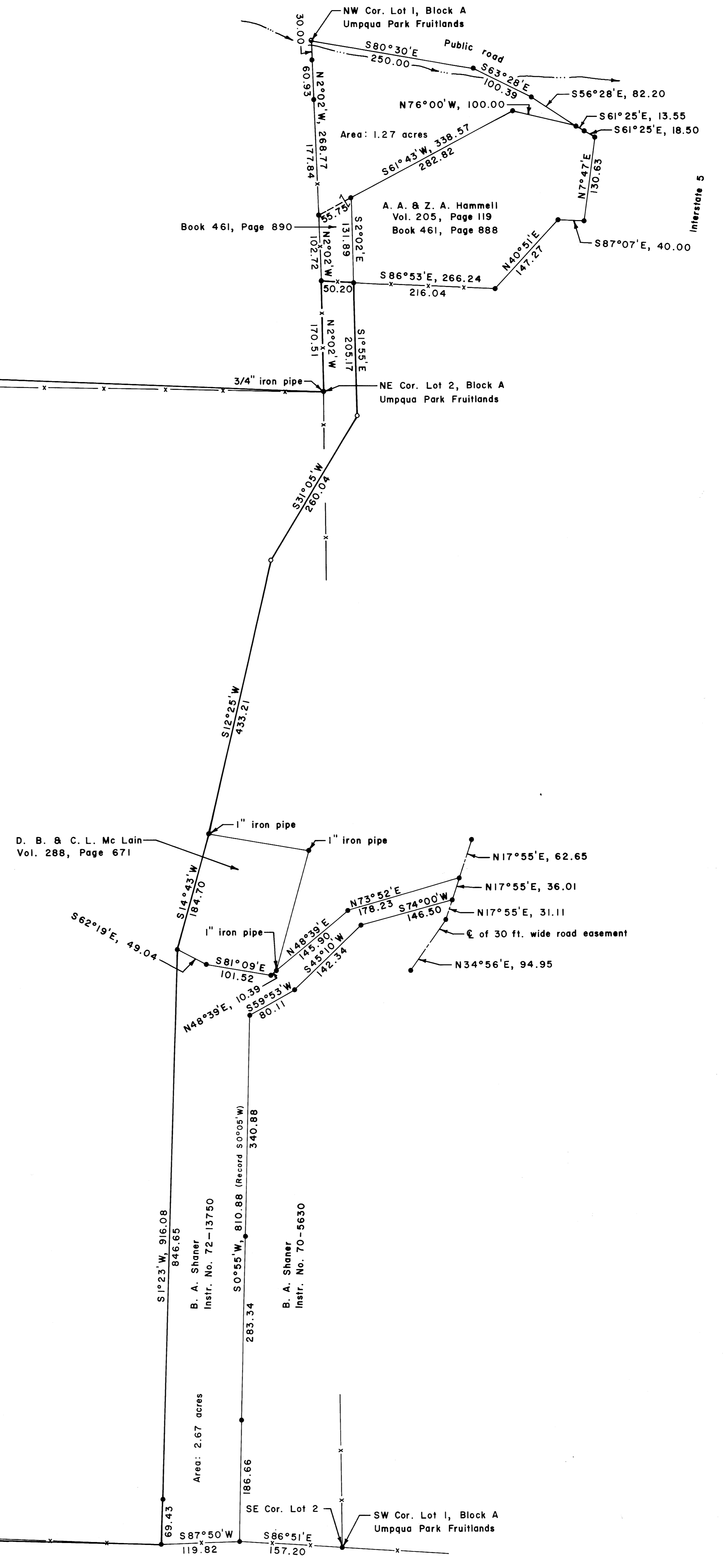
### LEGEND

- 1/4 S Corner found
- Section Corner not found
- Property corner found (5/8" iron rod unless noted)
- Property corner set (5/8" iron rod with aluminum cap)
- Property corner computed (not set)
- Property line
- Fence
- Stream



Lots 2, 3, 4 & 5, Block A  
Umpqua Park Fruitlands Subd.  
Area in lots 2, 3, 4 & 5 parcel, 112.39 acres  
Area in lot 1, 1.27 acres  
Total area, 113.66 acres

SW Cor. Lot 5, Block A  
Umpqua Park Fruitlands is  
a 20" white oak. Oak is  
also probable 1/4 corner.



RM 2 - 55