

SURVEY IN BLOCK 29, CITY OF SUTHERLIN, ORE.

SUTHERLIN, ORE.

APRIL 1972

SCALE 1"=10'

SURVEYED FOR - FIRST NAT BANK OF OREGON
SURVEYED BY - W.S. BARNES ENGR. SER.

ST. 1000

ST.

290.12

112°55'N

18" WATER MAIN (DASH 30')

18" WATER MAIN (DASH 30')

18" WATER MAIN (DASH 30')

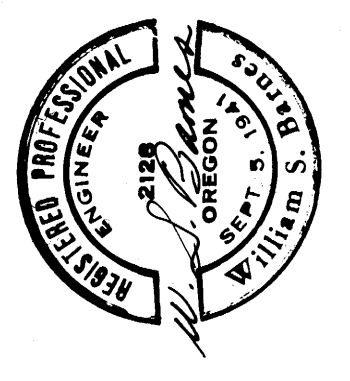
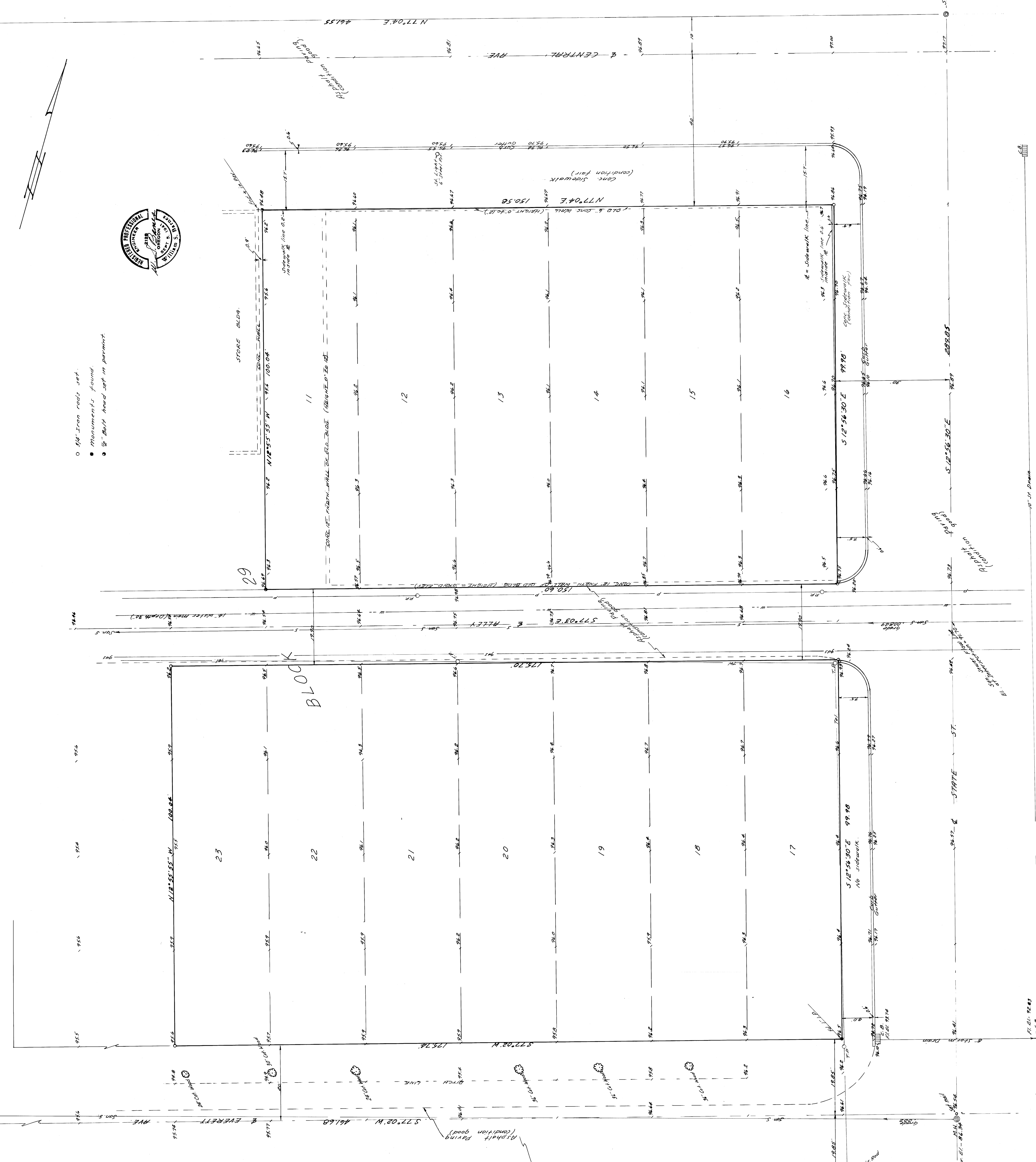
18" WATER MAIN (DASH 30')

18" WATER MAIN (DASH 30')

18" WATER MAIN (DASH 30')

18" WATER MAIN (DASH 30')

18" WATER MAIN (DASH 30')



- 3/4" Iron rods set.
- Monuments found.
- 3/8" Bolt head set in pavement.

18" WATER MAIN (DASH 30')

18" WATER MAIN (DASH 30')

18" WATER MAIN (DASH 30')

18" WATER MAIN (DASH 30')