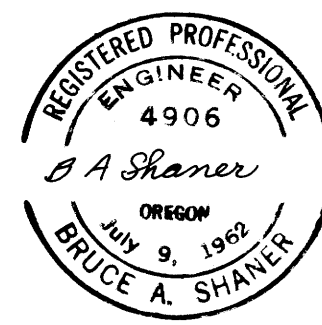


BOUNDARY SURVEY FOR L&H LUMBER CO.
 in NE 1/4 NE 1/4 SEC. 36 & SE 1/4 SEC. 25,
 T. 26 S., R. 6 W., W. M., WINCHESTER, OREGON

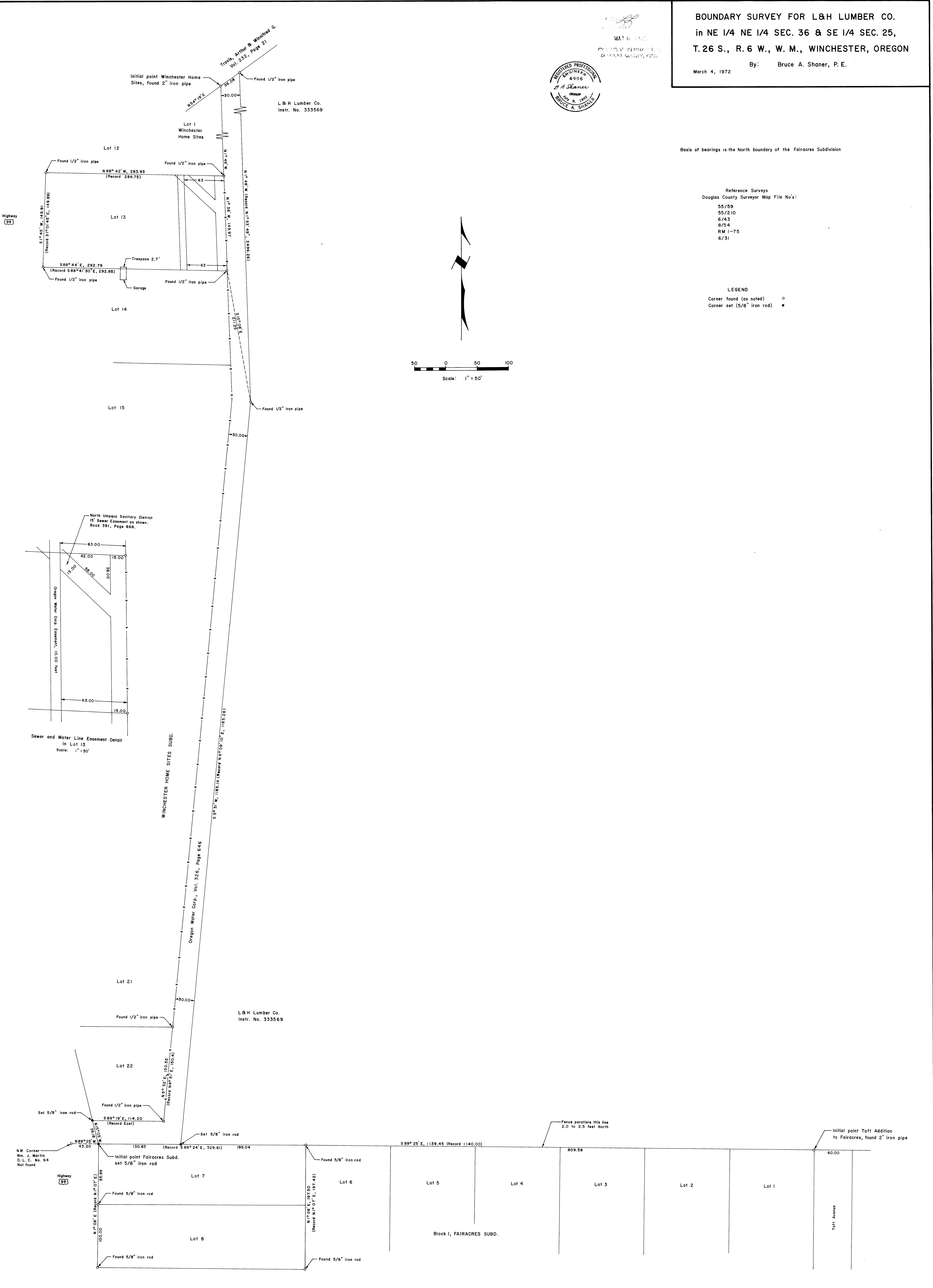
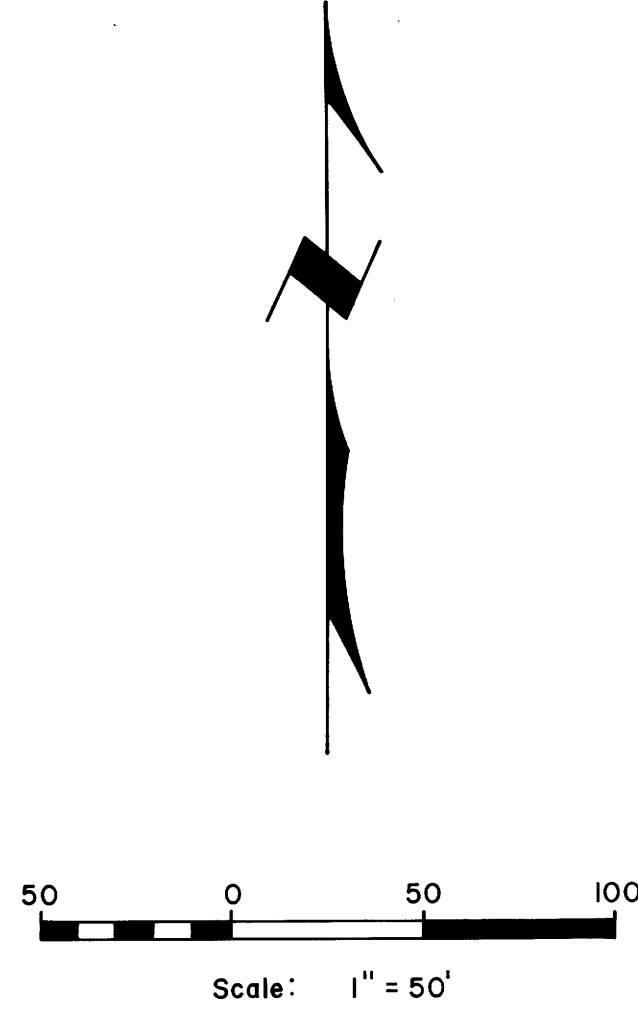
March 4, 1972 By: Bruce A. Shaner, P. E.



Basis of bearings is the North boundary of the Fairacres Subdivision

- Reference Surveys
 Douglas County Surveyor Map File No's:
- 55/59
 - 55/210
 - 6/43
 - 8/54
 - RM 1-75
 - 6/31

- LEGEND
- Corner found (as noted) ○
 - Corner set (5/8" iron rod) ●



Highway (99)

North Umpqua Sanitary District
 15' Sewer Easement as shown.
 Book 391, Page 666.

Sewer and Water Line Easement Detail
 in Lot 13
 Scale: 1" = 30'

WINCHESTER HOME SITES SUBD.

Oregon Water Corp., Vol. 326, Page 646

L & H Lumber Co.
 Instr. No. 333569

Block 1, FAIRACRES SUBD.

Taft Avenue