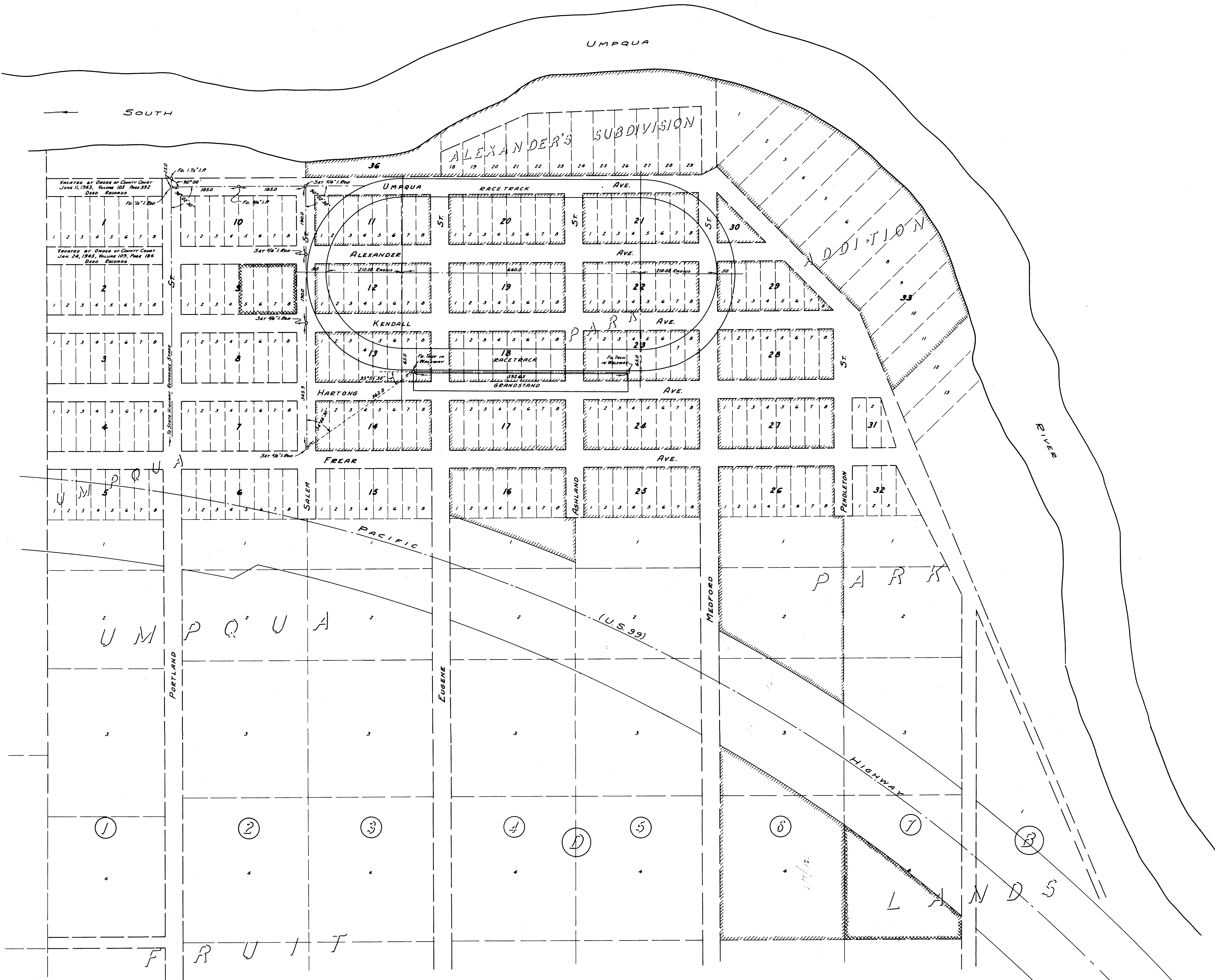

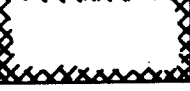


MAN FILE 614 5/18

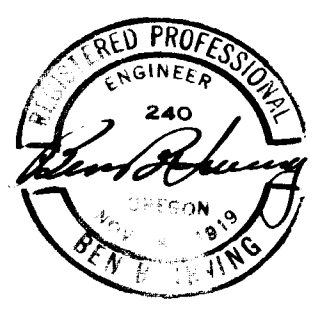
MAN FILE 614 5/18



NOTE: -
 1. of Salem St. located, as shown, by survey of May 20, 21, 1953. BALANCE OF MAP PROJECTED FROM RECORD PLAT.
 2. PACIFIC HIGHWAY, LOCATED FROM MAP OF SALES PREPARED BY OREGON STATE HIGHWAY DEPT. NUMBERED 73-716.

-  COUNTY LANDS - FAIRGROUND AREA
-  COUNTY LANDS - NOT A PART OF FAIRGROUNDS

SEE COUNTY COURT JOURNAL Vol. 16, PAGE 241 FOR DESCRIPTION OF LANDS LEASED TO CITY OF ROSEBURG.



COUNTY SURVEYOR'S OFFICE
 DOUGLAS COUNTY, OREGON

DOUGLAS COUNTY FAIRGROUNDS

BEN B. IRVING
 SURVEYED MAY 20, 21, 1953

COUNTY SURVEYOR
 SCALE 1" = 100'

MAN FILE 614 5/18