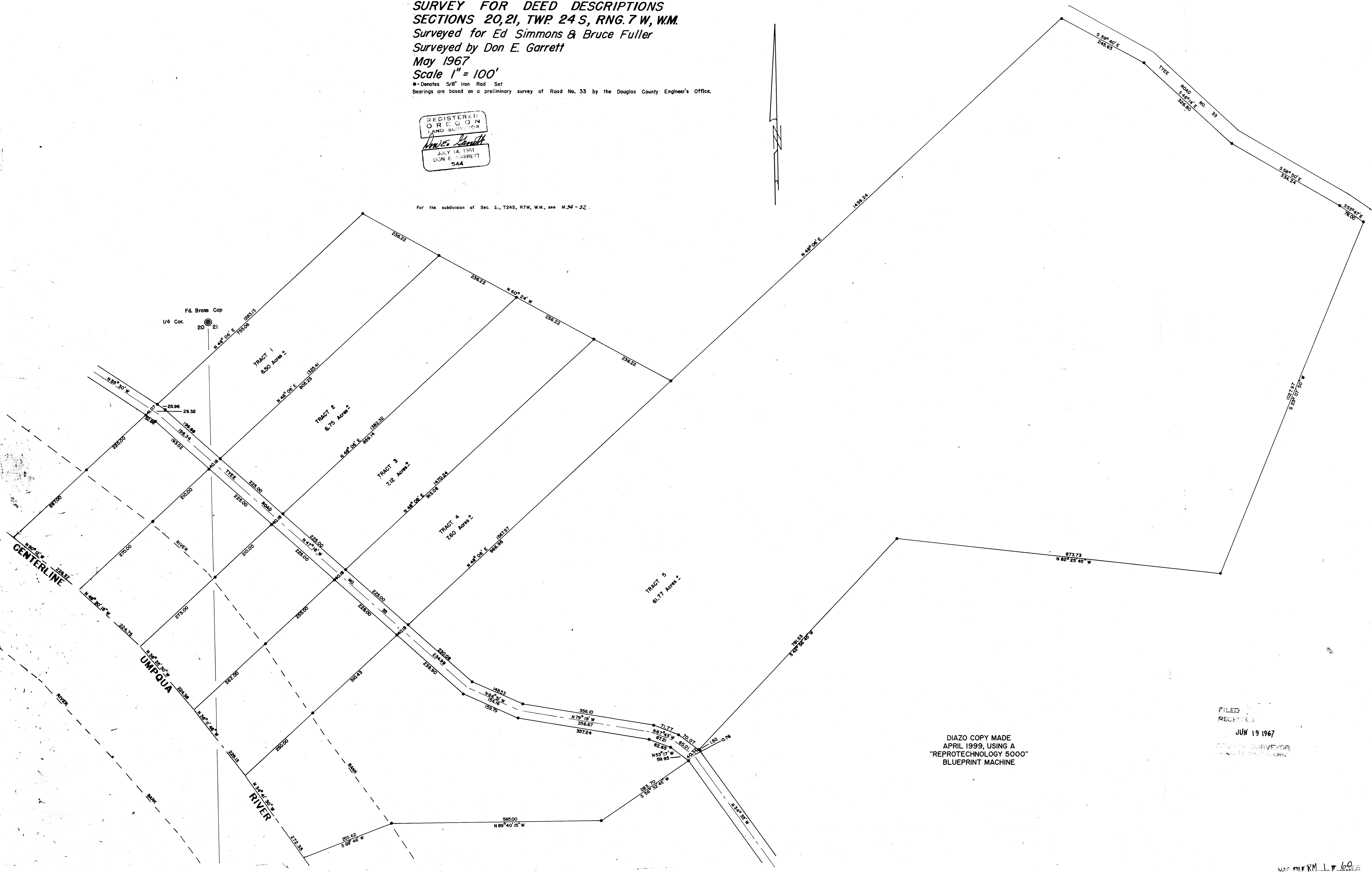


SURVEY FOR DEED DESCRIPTIONS
SECTIONS 20, 21, TWP 24 S, RNG. 7 W, W.M.
 Surveyed for Ed Simmons & Bruce Fuller
 Surveyed by Don E. Garrett
 May 1967
 Scale 1" = 100'

• Denotes 5/8" Iron Rod Set
 Bearings are based on a preliminary survey of Road No. 33 by the Douglas County Engineer's Office.

REGISTERED
 OREGON
 LAND SURVEYOR
Don E. Garrett
 JULY 14, 1961
 DON E. GARRETT
 544

For the subdivision of Sec. 2, T24S, R7W, W.M., see M.34-32.



DIAZO COPY MADE
 APRIL 1999, USING A
 "REPROTECHNOLOGY 5000"
 BLUEPRINT MACHINE

FILED
 RECEIVED
 JUN 19 1967
 COUNTY SURVEYOR
 DOUGLAS COUNTY, OREGON