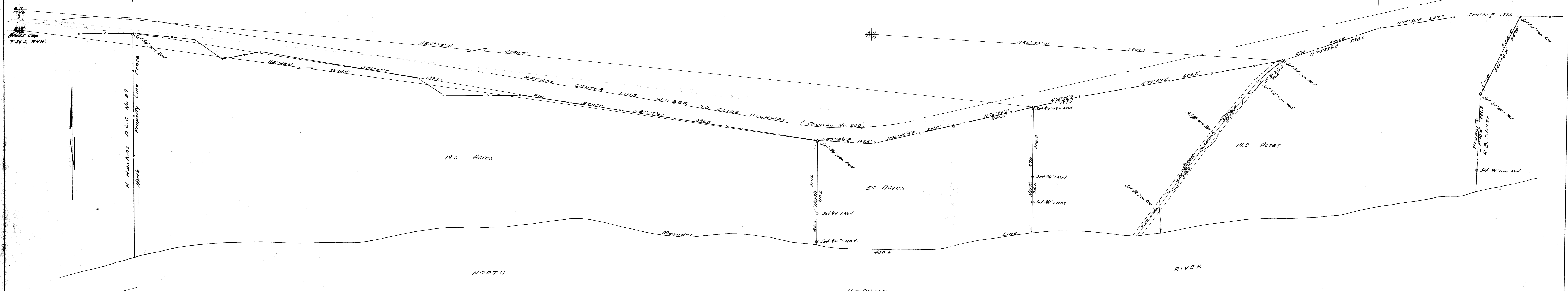


9	10
16	15 (Projected)



Note: Basic bearing taken from East fence line - 5°26'00"W

FILED  
RECEIVED  
JUN 29 1967  
COUNTY SURVEYOR  
DOUGLAS COUNTY, ORE.

MAP OF SURVEY IN SECS 9, 10, 15 & 16,  
T 26 S, R 4 W. W. M.  
DOUGLAS COUNTY, ORE.

SURVEYED FOR - PETE SERAFIN REALTY  
SURVEYED BY - W.S. BARNES  
MAR. 1967

SCALE 1" = 100'

