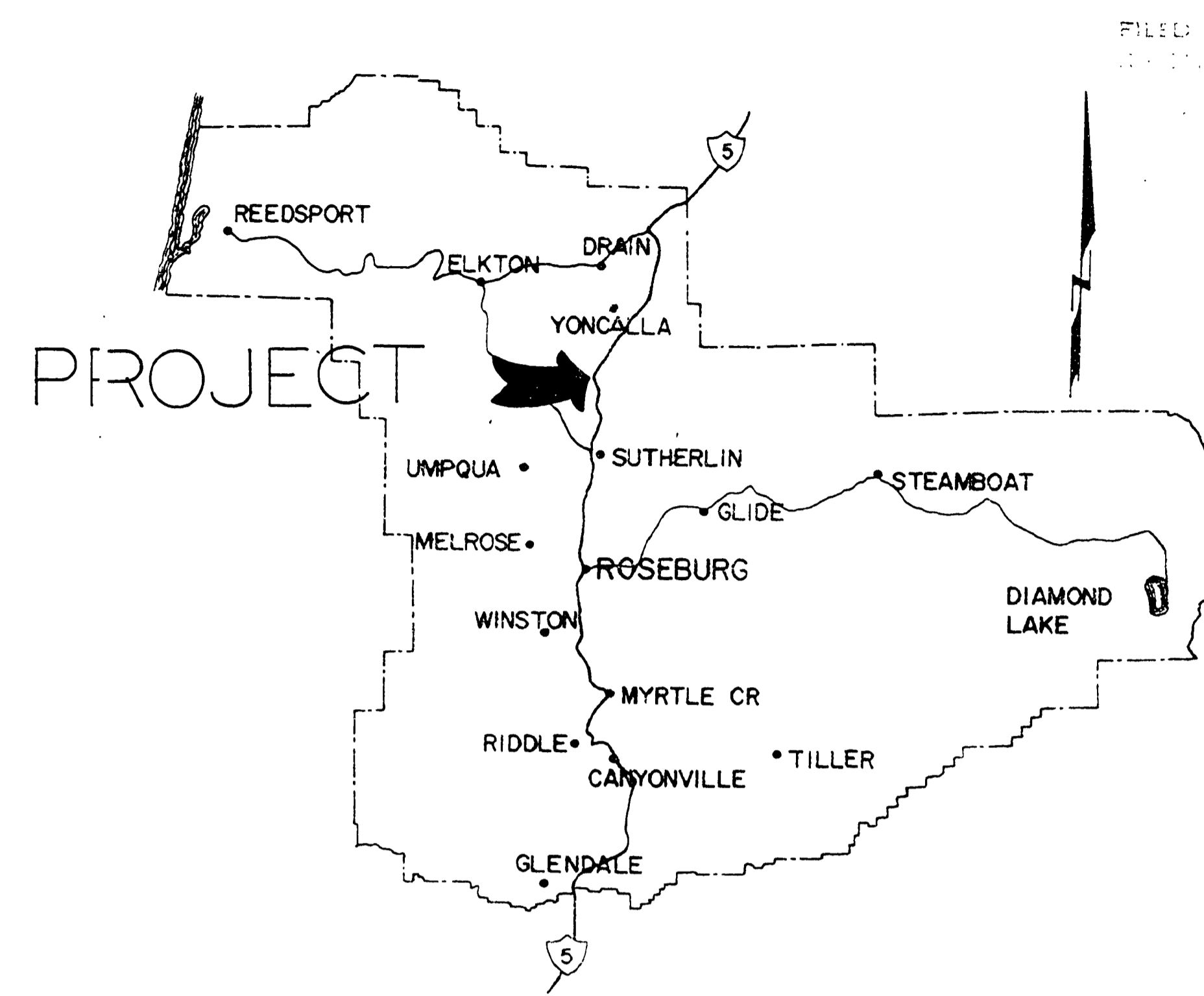
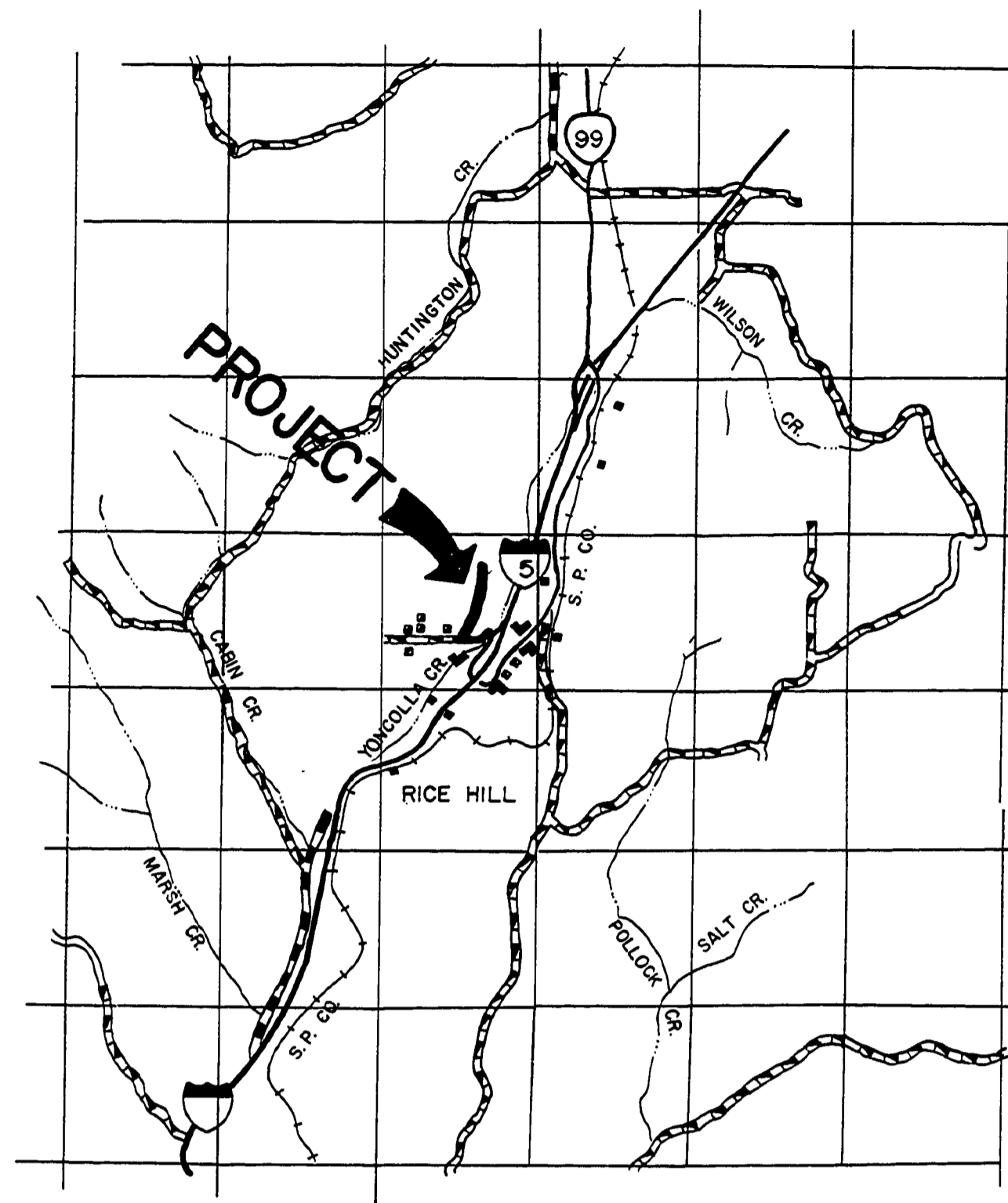


DOUGLAS COUNTY, OREGON
 PLANS FOR PROPOSED PROJECT
 GRADING & SURFACING

**PRESCOTT AVENUE
 ROAD NO.360**

MILE POINT 0.00 TO MILE POINT 0.21

1977



TYPICAL SPECIAL DITCH SECTIONS

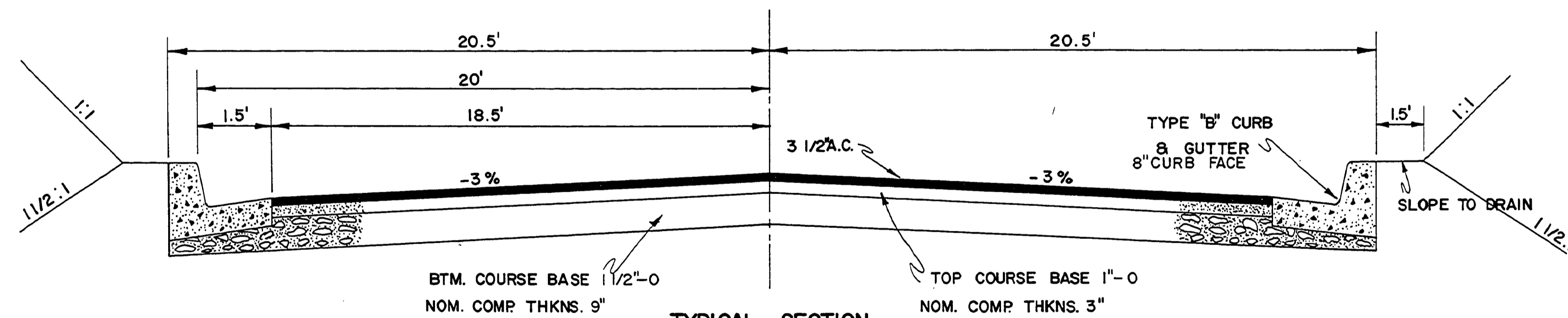


STATION LT. SIDE

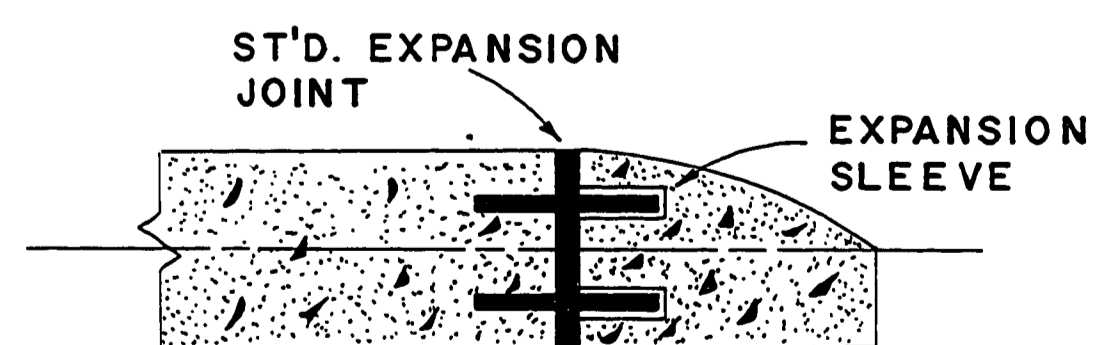
9+94
 15+50
 17+95

STATION RT. SIDE

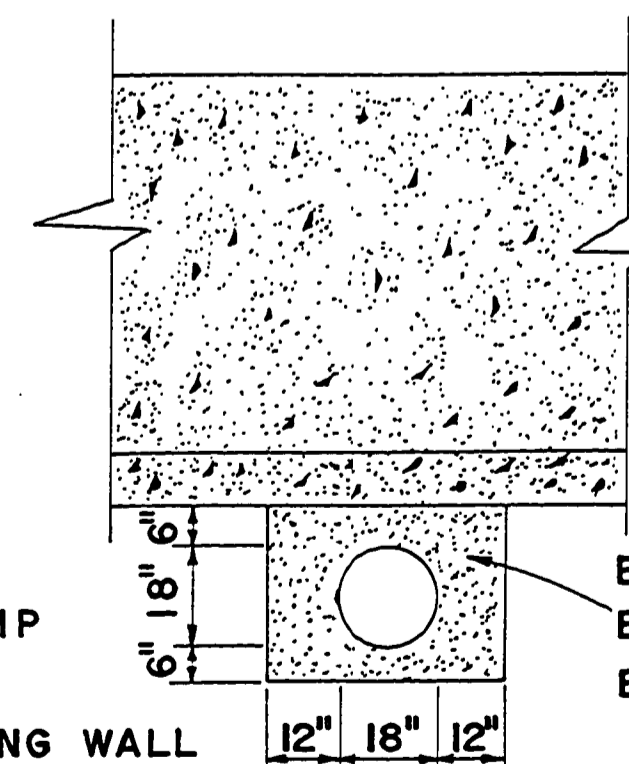
20+00



TYPICAL SECTION



TYPICAL SECTION FOR
 TEMP. CURB ENDS



NOTE:
 IF FEASIBLE 18" CMP
 MAY BE PLACED
 THROUGH RETAINING WALL

TYPICAL 18" CMP INSTALLATION
 UNDER RETAINING WALL @ STA. 9+94

INDEX OF DRAWINGS

SHEET NUMBERS

- 1 - TITLE SHEET & TYPICALS
 - 2 - QUANTITY SUMMARY
 - 3 - ROAD PLANS
 - 4 - RETAINING WALL
 - 110, 310, 4&9 - STANDARD DRAWINGS
 - 5 - SEWER PLANS
 - 6 - SEWER TYPICALS
 - 7 - WATERLINE TYPICALS
- TOTAL OF 11 SHEETS



AS BUILT 5/2/79 L.L.

DOUGLAS COUNTY
 PUBLIC WORKS DEPARTMENT
 PRESCOTT AVENUE #360
 1977 SHT. 1
 GEORGE E. GRUBB, DIRECTOR.