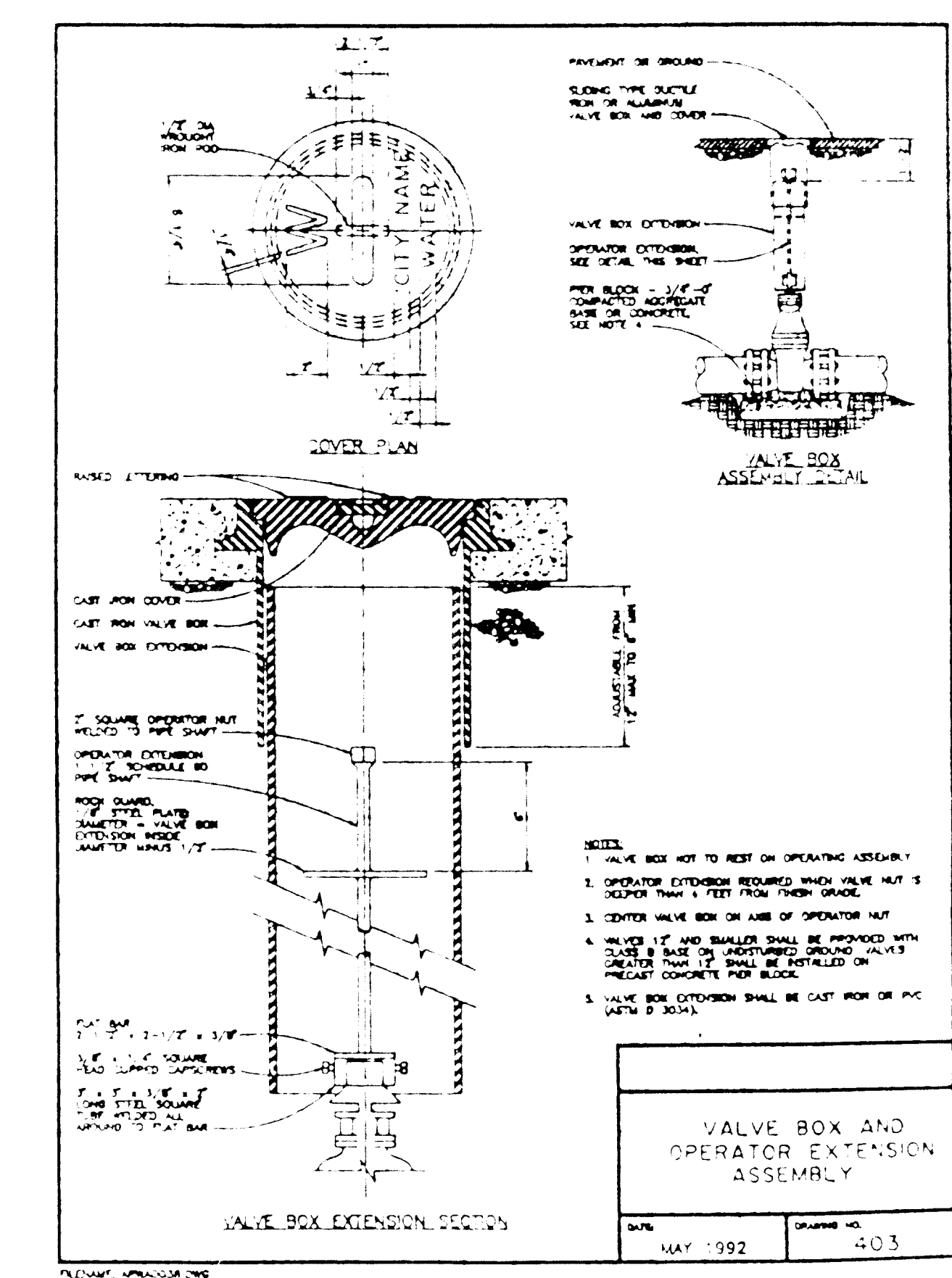
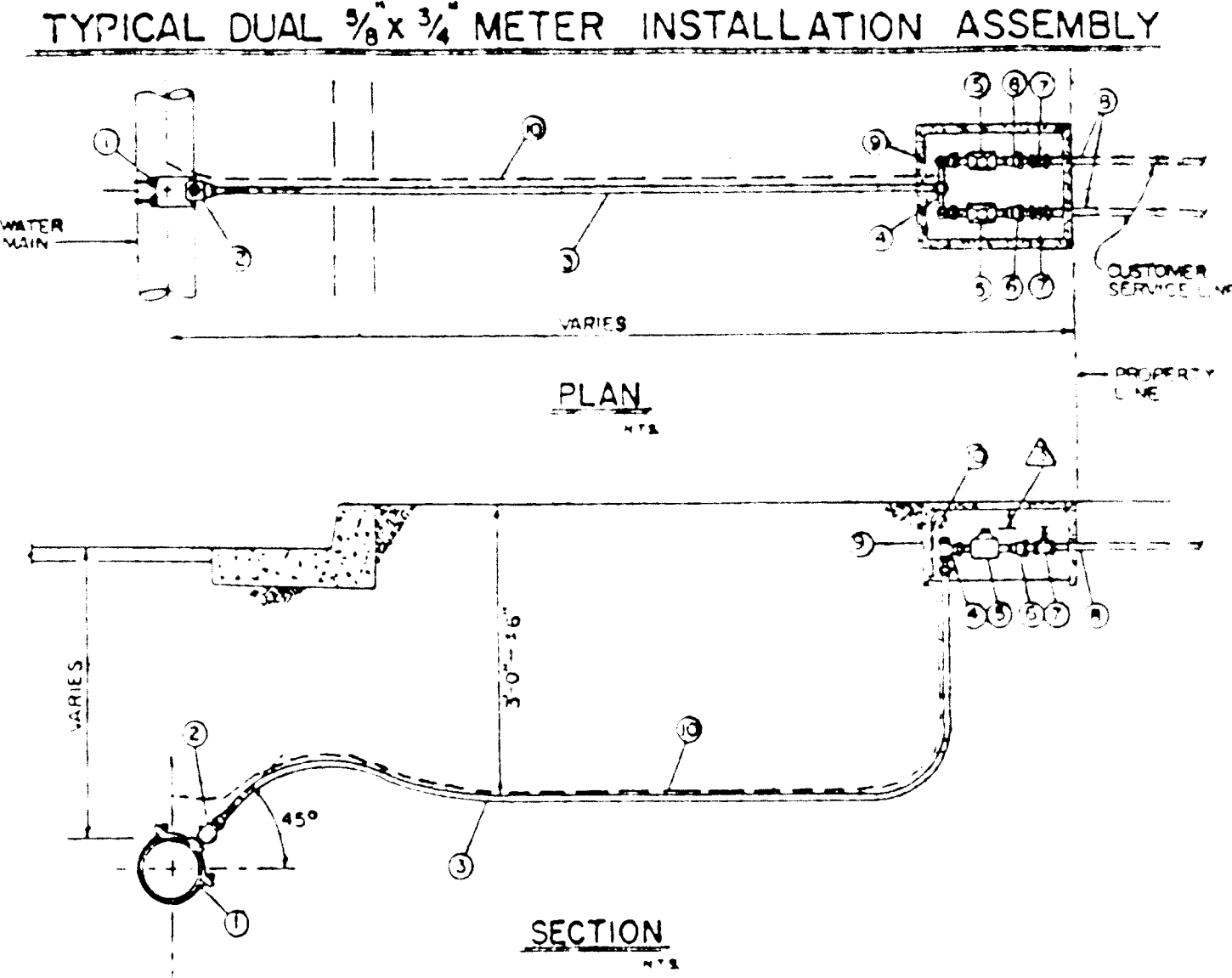


GENERAL NOTES:  
 1. VALVE BOX SHALL NOT TRANSMIT SHOCK OR STRESS TO VALVE.  
 2. VALVE BOX SHALL BE CENTERED AND FLUSH OVER OPERATING  
 NUT AND SHALL BE FLUSH WITH THE FINAL STREET OR SURFACE GRADE.

ALTERNATE VALVE &  
 VALVE BOX ASSEMBLY  
 FOR AC PAVEMENT, GRAVEL & NATIVE GROUND

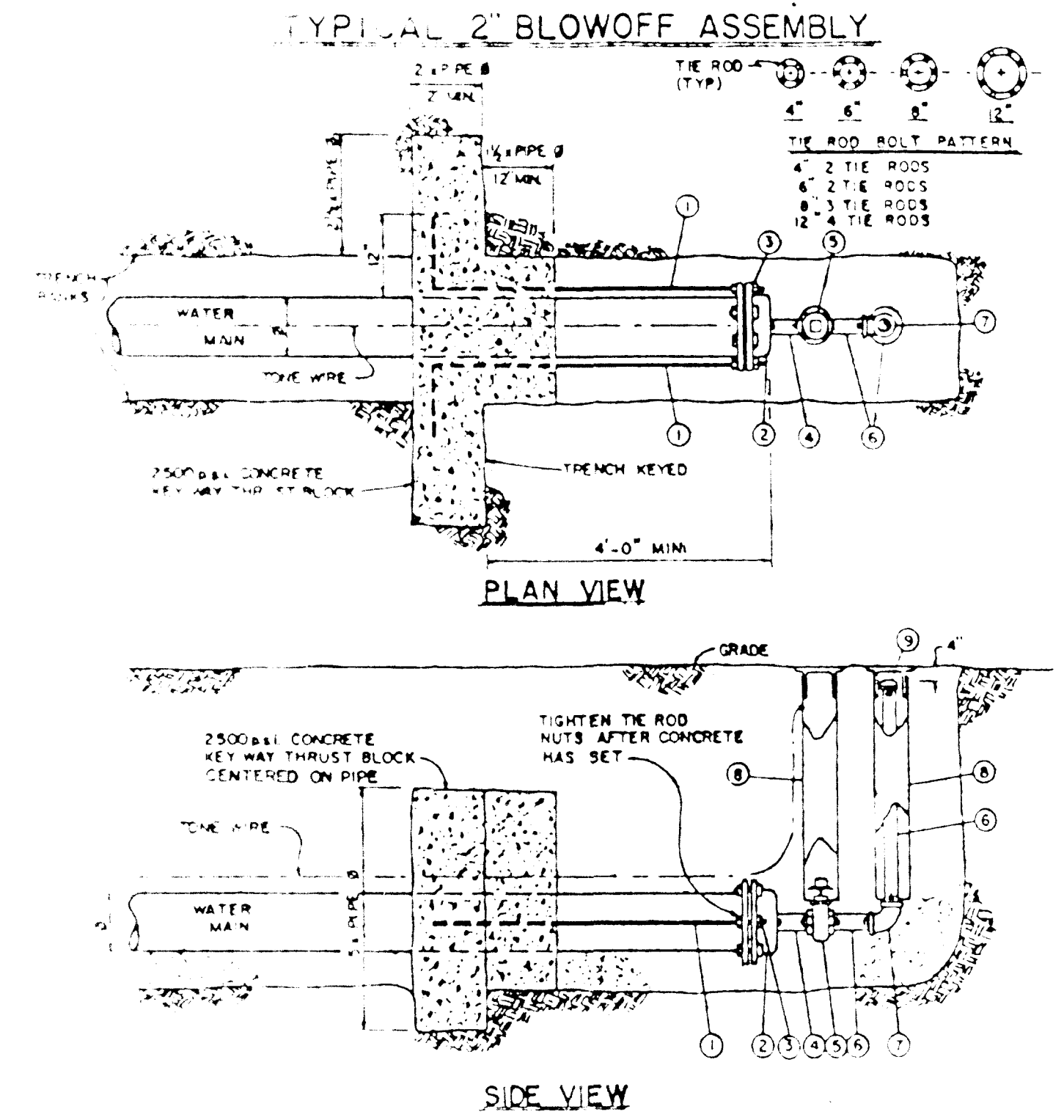
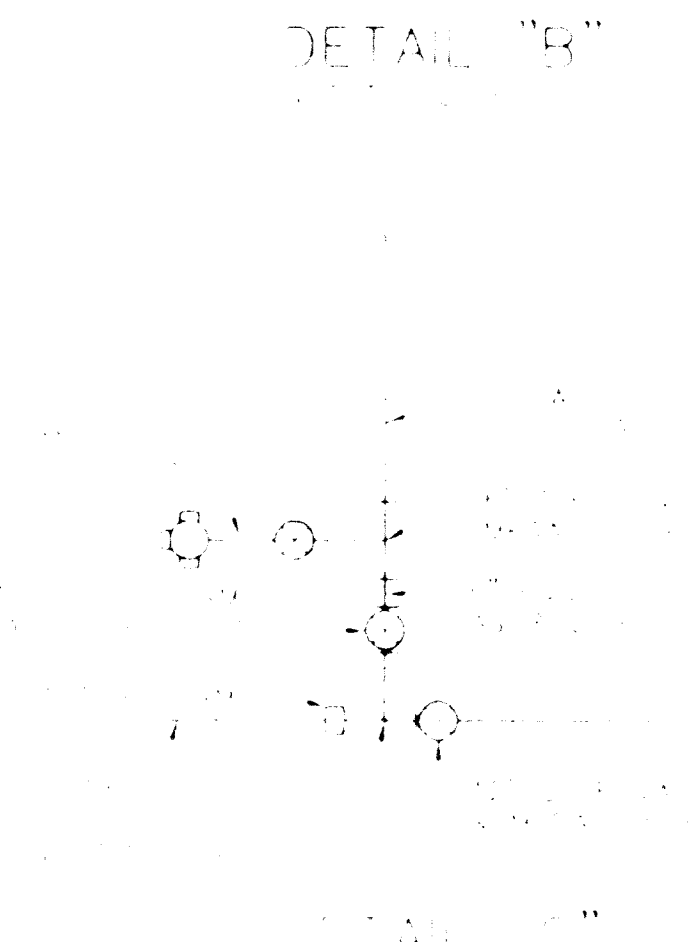


ITEM NO.	SIZE	DESCRIPTION	TYPE	QTY
1	AS REQ'D	SERVICE SADDLE	FORD, BRASS S-91	1
2	1"	COMP. STOP	FORD, P-1100	1
3	1"	SERVICE PIPE	200 HI. MOLY. POLYETHYLENE (MSP) PIPE	AS REQ'D
4	1"	BRANCH VALVE ASSEMBLY	FORD, BV-43-32 1/4" width	1
5	5/8" x 3/4"	METER	Neptune T-10 Gallons Reader	2
6	3/4"	STRAIGHT CHECK VALVE	RS-11323 (PISTON X PISTON)	2
7	3/4"	VALVE (CUSTOMER)	B-13-232W	1
8	—	CUSTOMER SERV. METER BOX	PER STATE PLUMBING CODE	—
9	—	METER BOX	Plastic	1
10	NO. 2	TONE WIRE	—	AS REQ'D



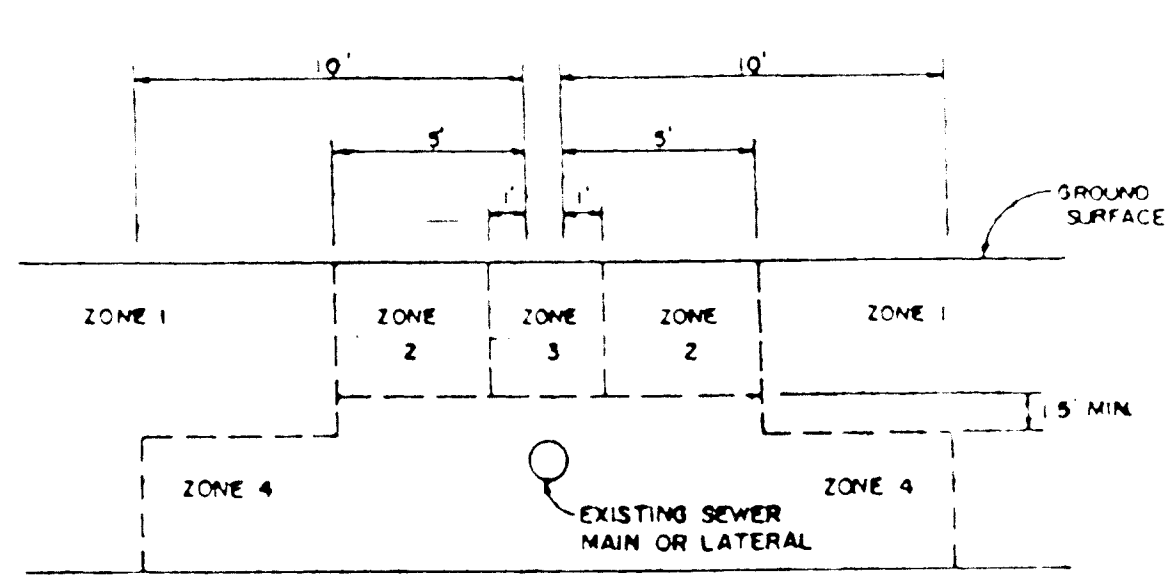
ITEM NO.	SIZE	DESCRIPTION	TYPE	QTY
1	AS REQ'D	SERVICE SADDLE	FORD, BRASS S-91	1
2	1"	COMP. STOP	FORD, P-1100	1
3	1"	SERVICE PIPE	200 HI. MOLY. POLYETHYLENE (MSP) PIPE	AS REQ'D
4	1"	BRANCH VALVE ASSEMBLY	FORD, BV-43-32 1/4" width	1
5	5/8" x 3/4"	METER	Neptune T-10 Gallons Reader	2
6	3/4"	STRAIGHT CHECK VALVE	RS-11323 (PISTON X PISTON)	2
7	3/4"	VALVE (CUSTOMER)	B-13-232W	1
8	—	CUSTOMER SERV. METER BOX	PER STATE PLUMBING CODE	—
9	—	METER BOX	Plastic	1
10	NO. 2	TONE WIRE	—	AS REQ'D

NOTES:  
 1. OR APPROVED EQUAL. SEE GENERAL SPECIFICATIONS.  
 2. TYPE AS APPROVED BY MANUFACTURER FOR WATER MAIN TYPE & SIZE.  
 3. TOP OF METER SHALL BE 4" TO 6" BELOW BOTTOM OF LID.

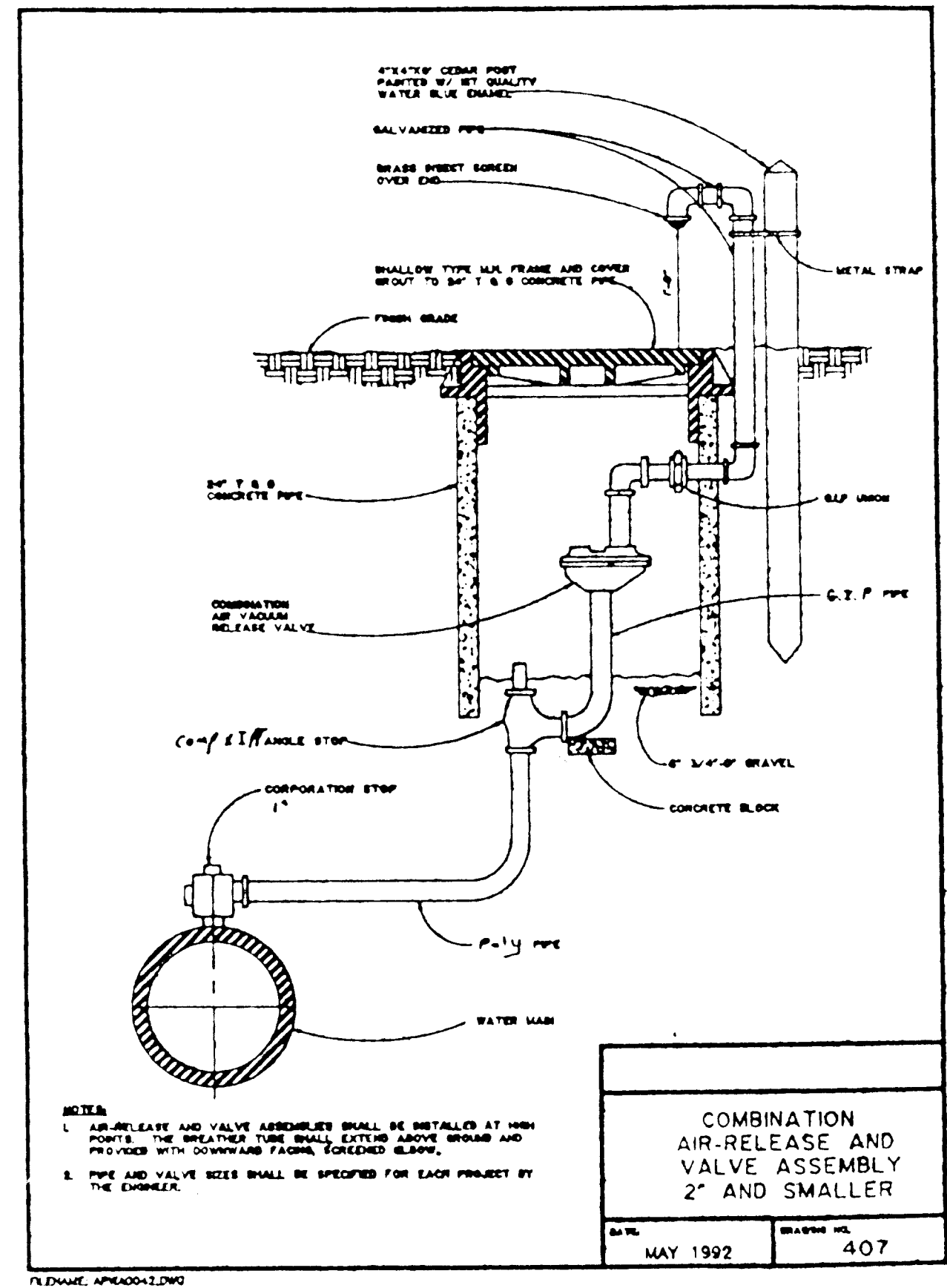


- LEGEND
- 1/4" DIA. STEEL TIE ROD, NO. TWO ONE END, BITUMASTIC COATED AFTER INSTALLATION
  - MAIN SIZE CAP WITH 2" I.P. THD. OUTLET (M.J. & F.L.P.T.)
  - STAR "SUPERSTAR TIEBOLT" AND "SUPERSTAR TIE NUT" (OPTIONAL)
  - 2" GALVANIZED IRON PIPE NIPPLE, BITUMASTIC COATED AFTER INSTALLATION
  - 2" GATE VALVE (1 FT) WITH 2" SQ. OPERATING NUT
  - 2" GALVANIZED IRON PIPE, LENGTH AS REQUIRED
  - 2" GALVANIZED 90° ELBOW (FL.P.T.)
  - 4" STANDARD VALVE BOX WITH LID
  - 2" TYP. HAND TIGHTEN ONLY

STANDARD  
 WATER LINE-SEWER LINE SEPARATION



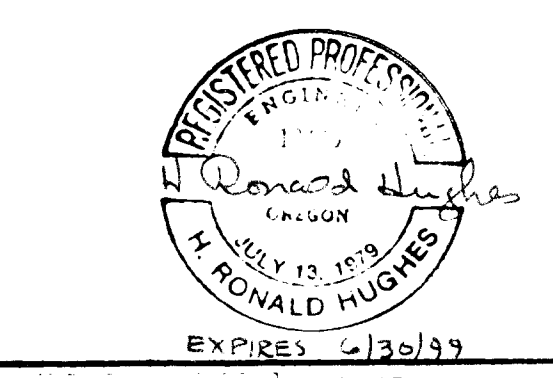
- NOTES:
1. ALL REFERENCE TO SEWERS SHALL MEAN SANITARY SEWERS.
  2. IN SITUATIONS INVOLVING A NEW WATER LINE PARALLEL TO AN EXISTING GRAVITY SEWER MAIN OR SEWER LATERAL, THE SEPARATION BETWEEN THE TWO SHALL BE AS INDICATED ABOVE.
  3. IN SITUATIONS WHERE A NEW WATER LINE CROSSES AN EXISTING GRAVITY SEWER MAIN OR SEWER LATERAL, THE SEPARATION BETWEEN THE TWO SHALL BE AS FOLLOWS:  
 A) WHEREVER POSSIBLE, THE BOTTOM OF THE WATER LINE SHALL BE 1.5 FEET ABOVE THE TOP OF THE SEWER LINE AND ONE FULL LENGTH OF THE WATER LINE SHALL BE CENTERED AT THE CROSSING.  
 B) WHERE IT IS NOT POSSIBLE FOR THE WATER LINE TO BE 1.5 FEET ABOVE THE SEWER LINE, OR WHERE THE WATER LINE PASSES UNDER THE SEWER LINE, THE EXISTING SEWER LINE SHALL BE EXPOSED FOR A DISTANCE OF 10 FEET ON EACH SIDE OF THE CROSSING AND EXAMINED TO DETERMINE THE CONDITION OF THE PIPE AND JOINTS. DEPENDING ON THE CONDITION FOUND, THE SEWER LINE SHALL BE EITHER REPLACED BY A FULL LENGTH CENTERED ON THE CROSSING POINT OF PVC PRESSURE PIPE (ASTM-D 2241, SDR 32.5), HIGH-DENSITY PE PIPE (ORISCO-PIPE 1000), DUCTILE-IRON, CLASS 50 (AWWA C-151), OR OTHER ACCEPTABLE PIPE, OR ELSE ENCASED IN A REINFORCED CONCRETE JACKET FOR A DISTANCE OF 10' ON BOTH SIDES OF THE CROSSING, AT THE DISCRETION OF THE ENGINEER.



Rev.	Date	Dwg	Description
1	4/25/96	DAF	ROBERTS CHECK WATER DIST. COMMENTS
2	7/24/96	DAF	AS BUILT

FILED  
 Date: 7/11/98 By: JF  
 This survey consists of:  
 Map:  
 Narrative:  
 Corner Ppt:  
 DOUGLAS COUNTY  
 SURVEYOR

INSPECTED BY:



i.e. ENGINEERING

Project Name:  
 LEBLANC SUBDIVISION  
 STREET IMPROVEMENT PLANS  
 WATERLINE DETAILS  
 DESIGNED BY: PROJECT NO. 11719  
 DWG. DATE: 4/25/96  
 CHK. DATE: 7/24/96  
 APP. DATE: 7/24/96  
 SHEET NO. 7 OF 11  
 DO NOT DUPLICATE

DESIGNED BY MIKE A. PARKER  
 INSPECTED BY H. RONALD HUGHES