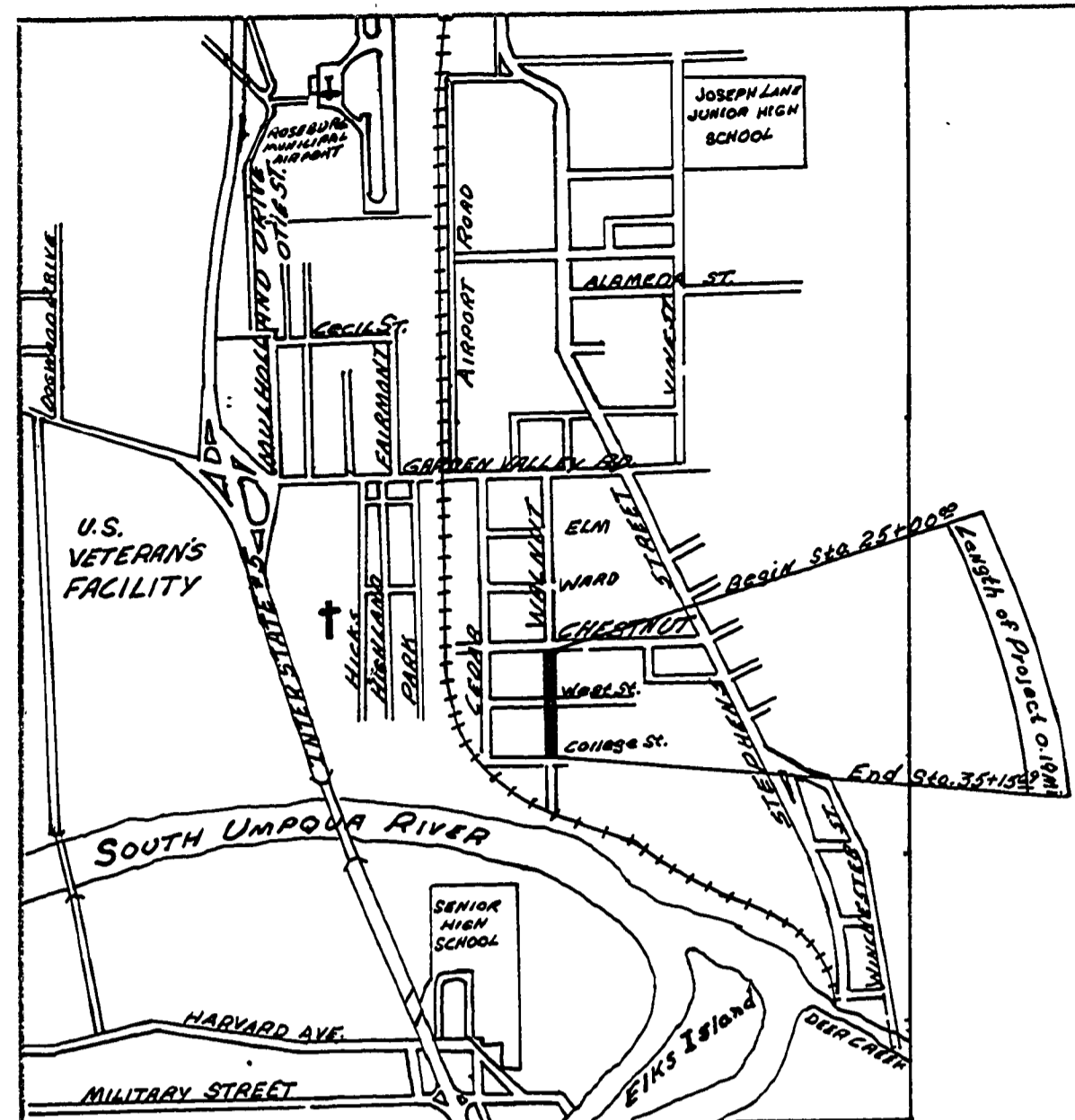
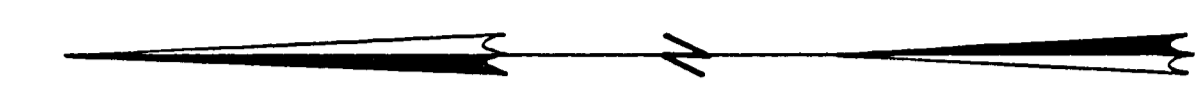
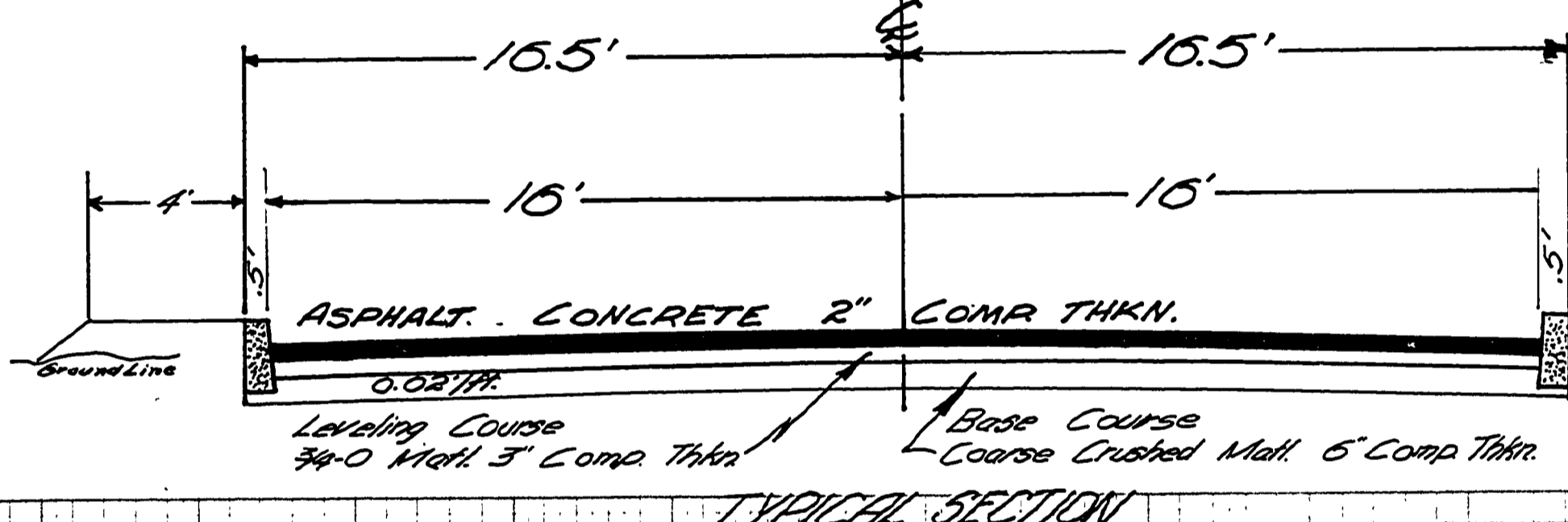
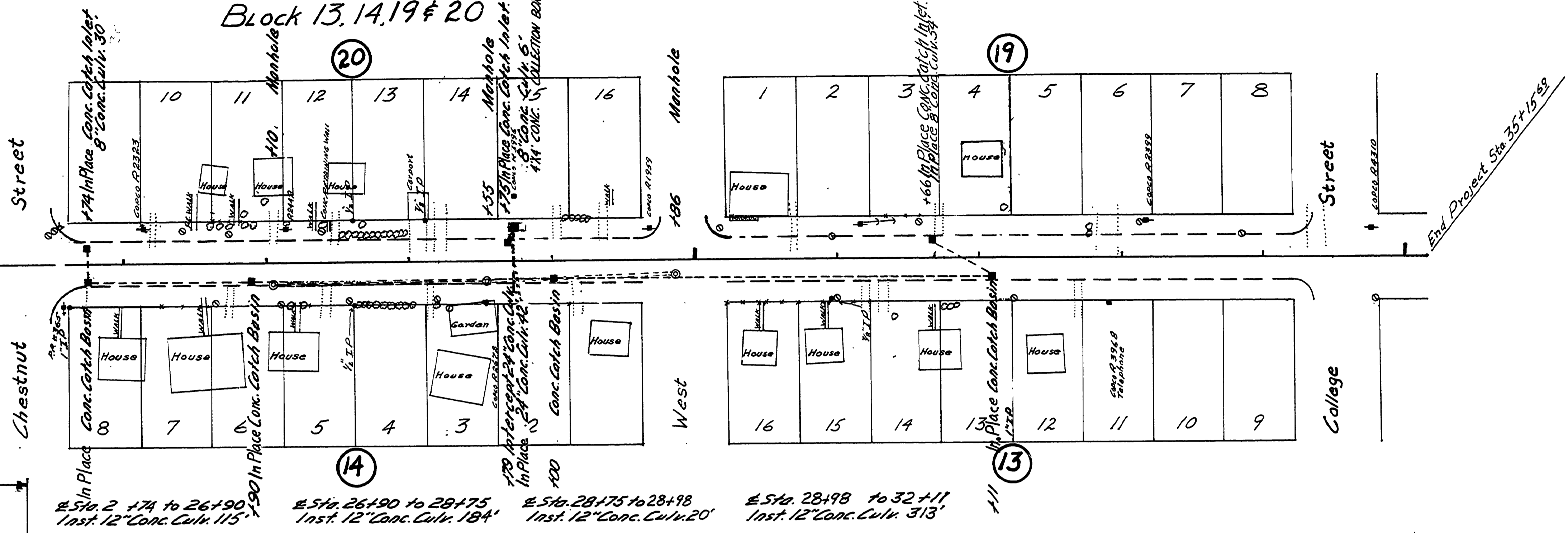


SEC. 13, T27S. R.6W.W.M.

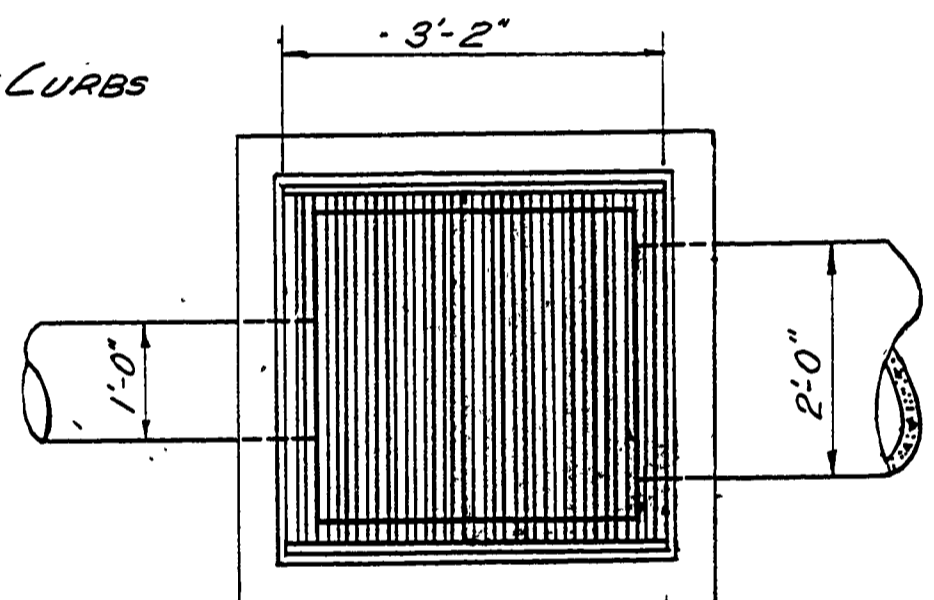
RIVERSIDE ADDITION TO ROSEBURG
Block 13, 14, 19 & 20



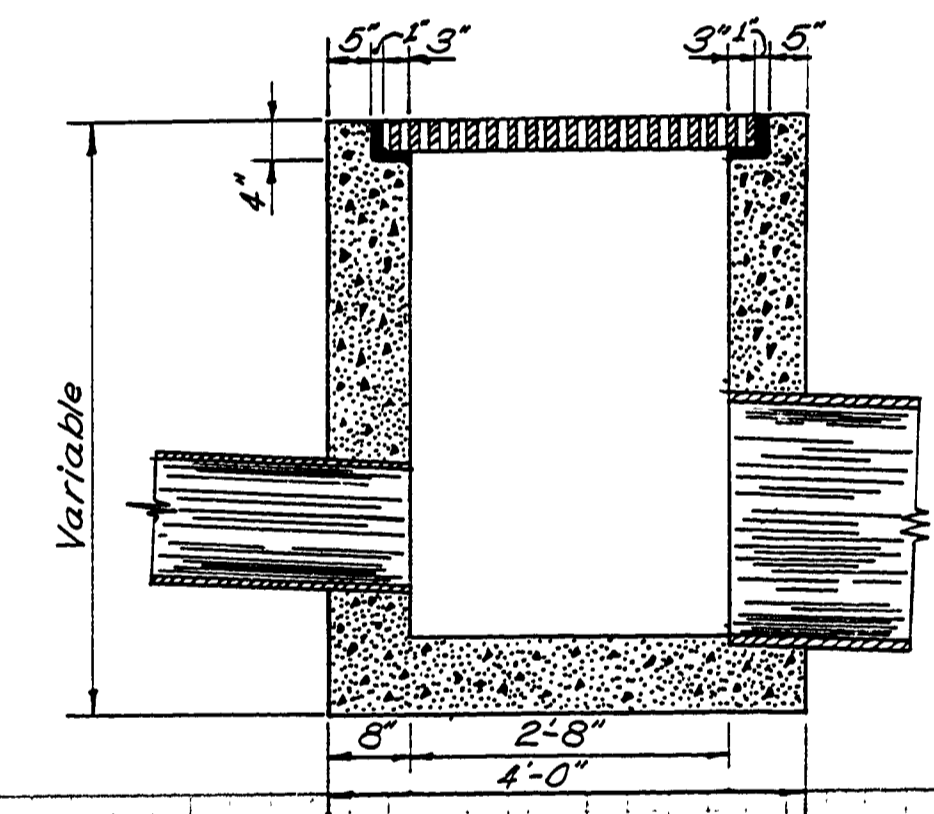
VICINITY MAP
NORTH ROSEBURG



TYPE "B" CONCRETE CURBS
VARIABLE SLOPE
MIN. 0.05/FT

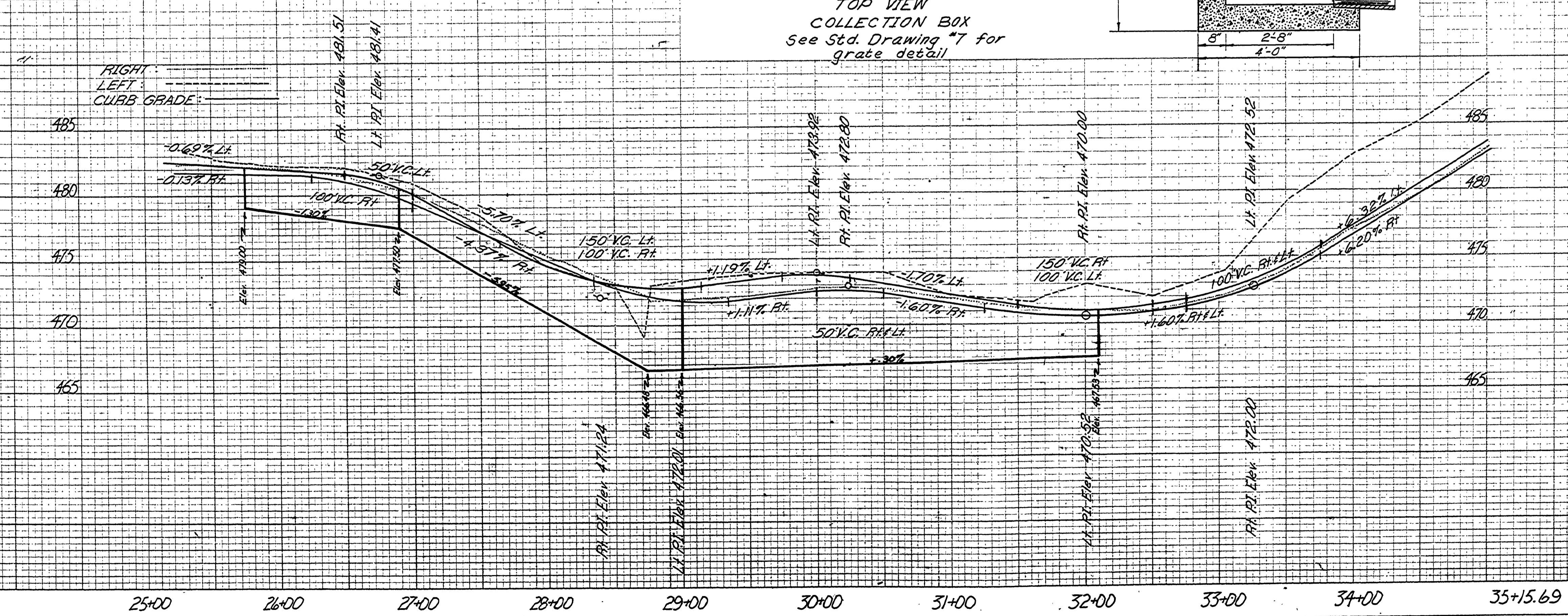


TOP VIEW
COLLECTION BOX
See Std. Drawing #7 for
grate detail



APPROVED BY DOUGLAS COUNTY
BOARD OF COMMISSIONERS THIS
27th DAY OF MARCH 1967

Stanford Bruce
COMMISSIONER
Rick Donohue
COMMISSIONER
Ralph D. ...
COMMISSIONER
George E. Grubb
COUNTY ENGINEER DATE 3/27 1967



FILED
RECEIVED
MAR 29 1967
COUNTY SURVEYOR
DOUGLAS COUNTY, OREGON

Douglas County Road Dept
WALNUT ST. #162
Date June 1965 Sheet 1 of 1
A.H. MAY County Engineer