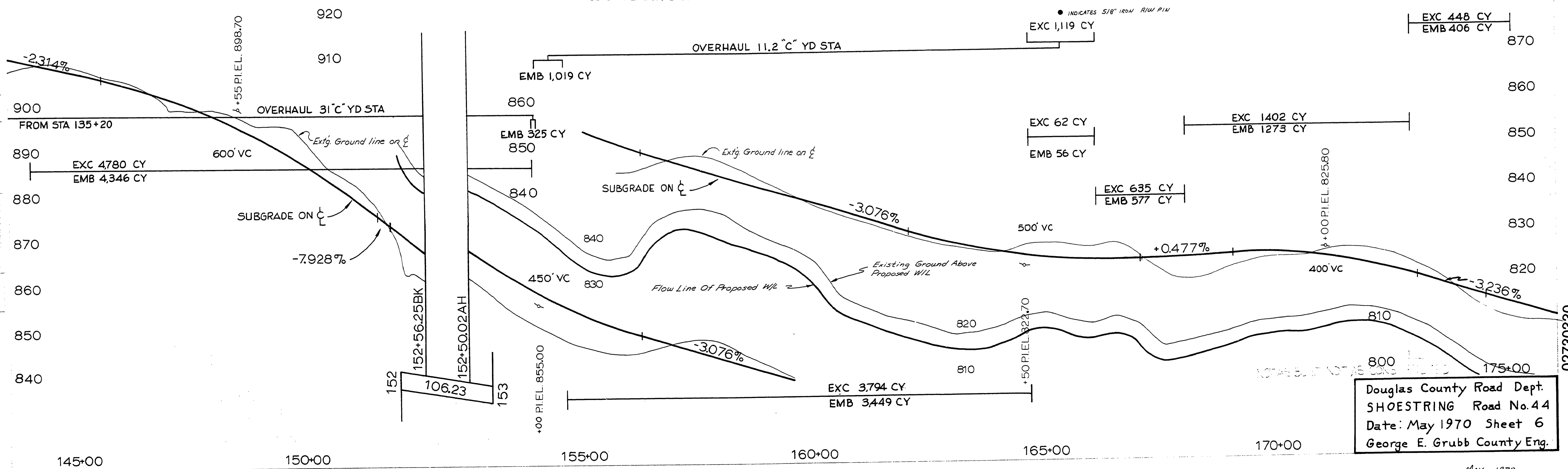
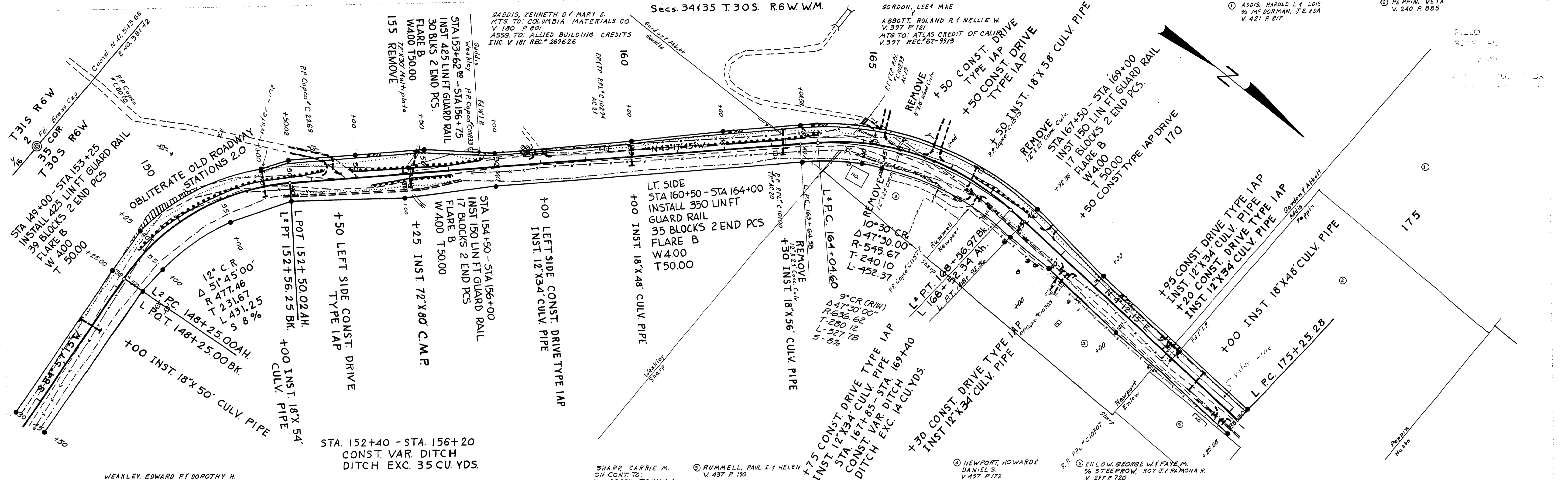


MP3

Secs. 34135 T.30S. R.6W.W.M.



Douglas County Road Dept.
 SHOESTRING Road No.44
 Date: May 1970 Sheet 6
 George E. Grubb County Eng.

May, 1970
 G. Rd. # 44 sheet 6 of 8 (40)

M.P. 2.73 - 3.30