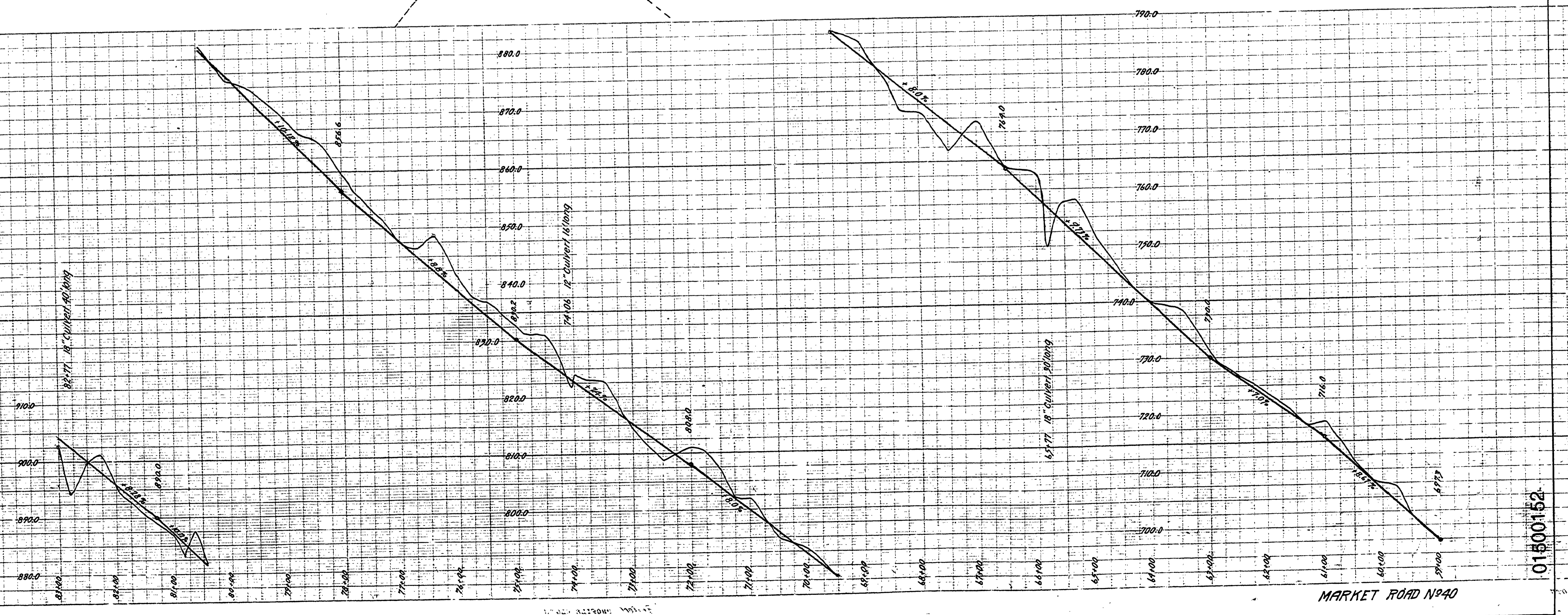


**DOUGLAS COUNTY HIGHWAY
IMPROVEMENT
PROFILE AND ALIGNMENT
BOOMER HILL ROAD
SECTION 24, TWP 29S, RANGE 6 W.W.M.
STA. 58+96.7 to STA. 111+58.2**
OFFICE OF
F.C. FREAR
COUNTY SURVEYOR AND ROADMASTER
SCALE: HORIZONTAL 1"=100', VERTICAL 1"=10'

SHEET NO. 1



01500152