

Township No 19 South Range No 8 West of the Willamette Meridian Oregon.

Sec 31

Sec 32

Sec 33

Sec 34

Sec 35

Sec 36

R. 1 W.

5 26.73	4 31.96	3 32.60	2 33.24	1 33.88	2 34.72	3 35.77	4 36.82	5 37.87	6 39.02	7 40.37	8 41.88	9 42.86	10 43.92	11 44.81	12 45.69	13 45.56	14 47.40	15 48.20	16 49.00	17 49.80	18 50.40	19 50.80	20 51.20	21 51.60
6 33.99	7 40.00	8 40.00	9 40.00	10 40.00	11 40.00	12 40.00	13 40.00	14 40.00	15 40.00	16 40.00	17 40.00	18 40.00	19 40.00	20 40.00	21 40.00	22 40.00	23 40.00	24 40.00	25 40.00	26 40.00	27 40.00	28 40.00	29 40.00	30 40.00
15 33.85	14 40.00	13 40.00	12 40.00	11 40.00	10 40.00	9 40.00	8 40.00	7 40.00	6 40.00	5 40.00	4 40.00	3 40.00	2 40.00	1 40.00	2 40.00	3 40.00	4 40.00	5 40.00	6 40.00	7 40.00	8 40.00	9 40.00	10 40.00	11 40.00
16 33.71	17 40.00	18 40.00																						
21 33.57	20 40.00	19 40.00																						
6 32.09	5 40.00	4 40.00																						
7 32.23	8 40.00	9 40.00																						
12 32.88	11 40.00	10 40.00																						
1 32.94	2 40.00	3 40.00																						
6 32.67	5 40.00	4 40.00																						
7 32.40	8 40.00	9 40.00																						
12 32.13	11 40.00	10 40.00																						
1 32.05	2 40.00	3 40.00																						
6 32.75	5 40.00	4 40.00																						
7 32.25	8 40.00	9 40.00																						
12 32.35	11 40.00	10 40.00																						
1 32.25	2 40.00	3 40.00																						
6 32.55	5 40.00	4 40.00																						
7 32.65	8 40.00	9 40.00																						
12 32.75	11 40.00	10 40.00																						
1 32.82	2 40.00	3 40.00																						
6 32.87	5 40.00	4 40.00																						
7 32.92	8 40.00	9 40.00																						
12 32.97	11 40.00	10 40.00																						

H. 3812
W. E. WISE

J. C. Hankston
Cr. 3328
H. 3796
W. W. Dixon Cr. 3500

F. Y. Shuman
S. L. Szaw

Estmond Creek

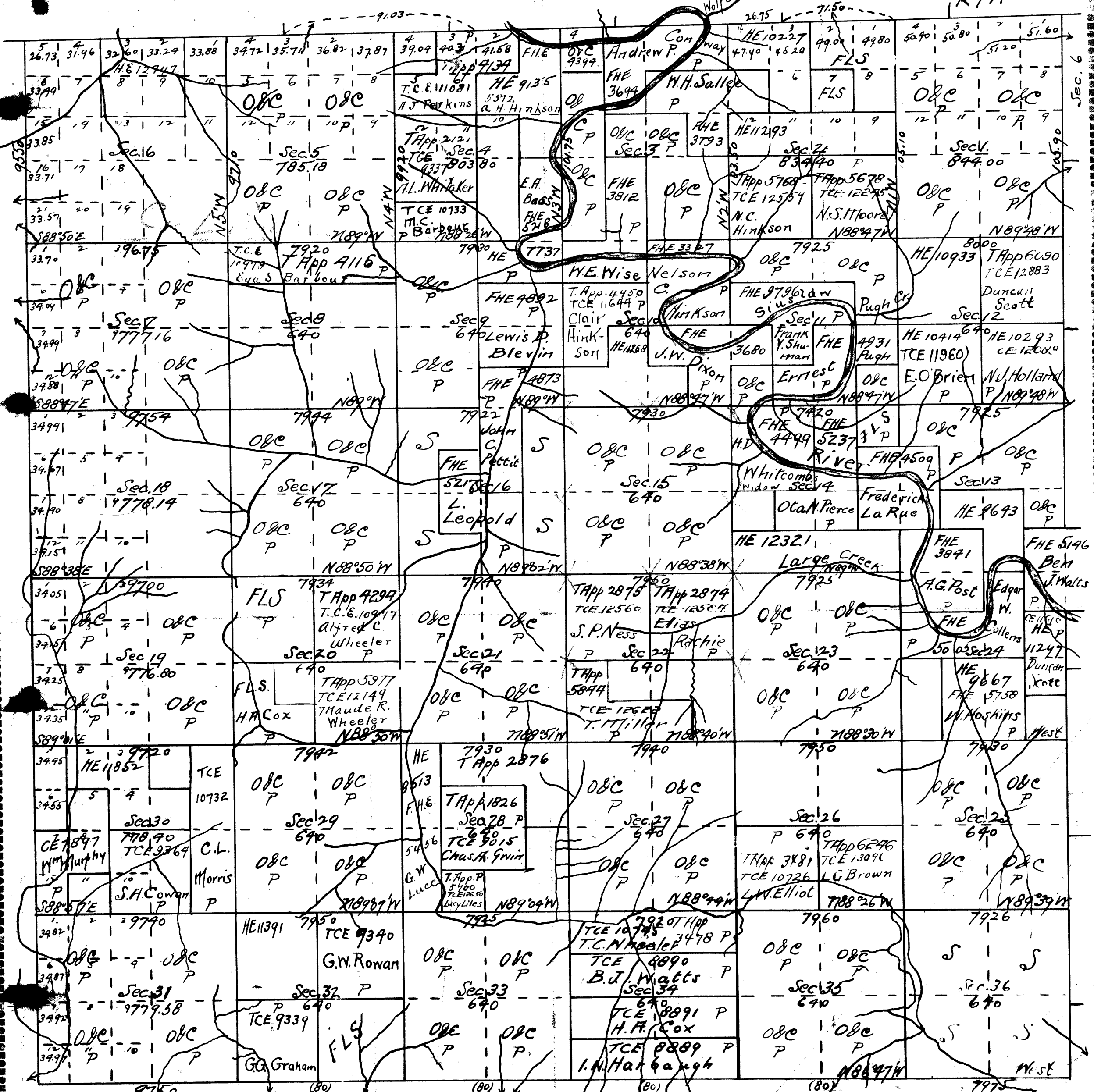
Fawn Creek

River

Lafayette Creek

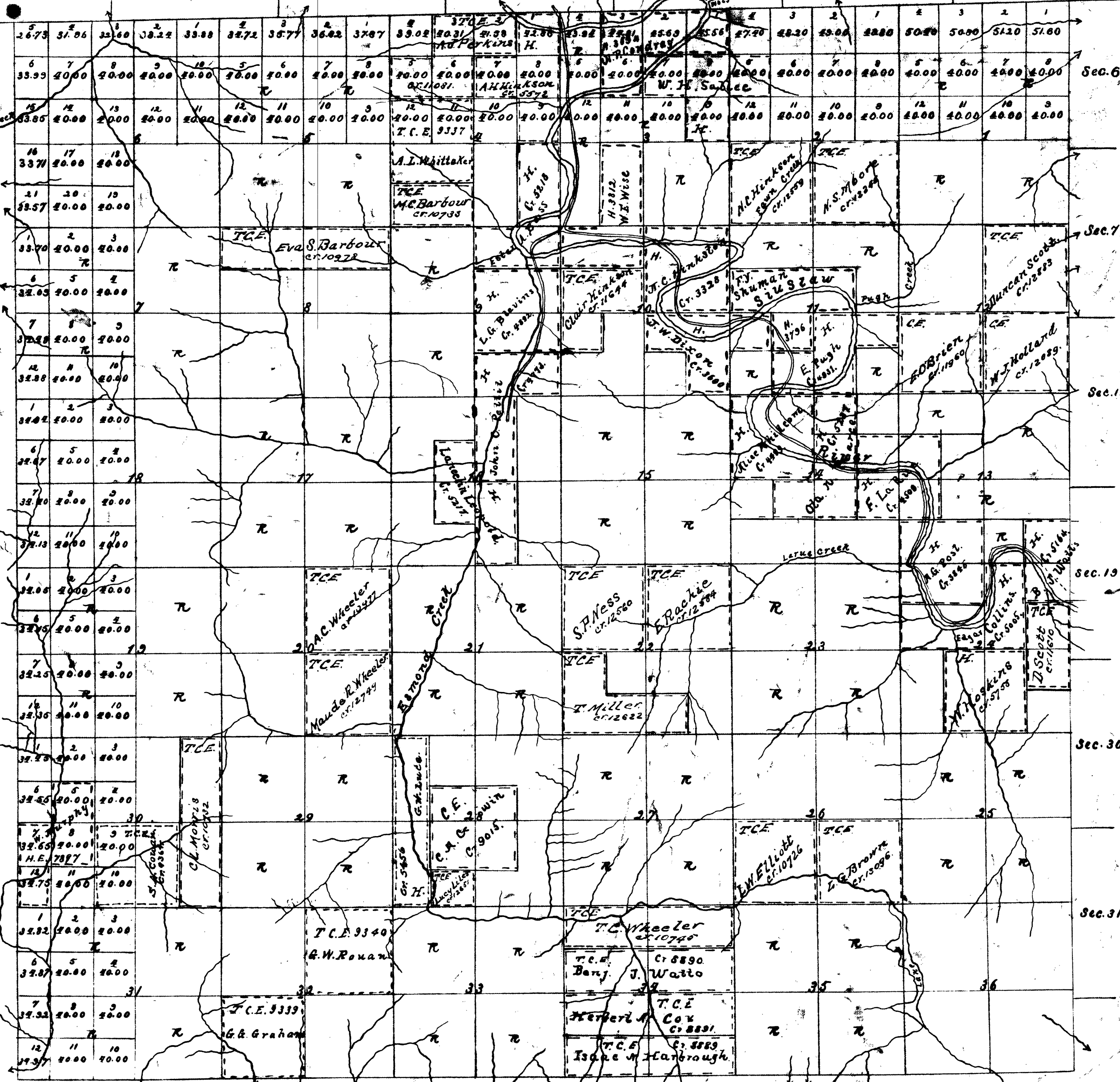
Willamette Creek

Township No. 19 South, Range No. 8 West, of the Willamette Meridian, Oregon.



Township No 19 South Range No 8 West of the Willamette Meridian Oregon.

Sec. 31 Sec. 32 Sec. 33 Sec. 34 Sec. 35 Sec. 36 R. 7W.



Sec. 6

Sec. 7

Sec. 18

Sec. 19

Sec. 30

Sec. 31