

Field Book # 91

97

FIELD BOOK

No. 493 1/2

EUGENE DIETZGEN CO.,

Drawing Materials and Surveying Instruments.
 CHICAGO. SAN FRANCISCO.
 NEW YORK.

TABLES FOR EXCAVATIONS AND EMBANKMENTS.
 DISTANCES FROM CENTER OF ROADWAY FOR CROSS-SECTIONING
 ROADWAY 20 FEET WIDE. SIDE SLOPES 1 TO 1.
 FOR SINGLE TRACK EXCAVATION.

Copyright, 1902. No. 38340.

The Sutherland Land & Water Co.
Weistell

	0	1	2	3	4	5	6	7	8	9
0	10.0	10.1	10.2	10.3	10.4	10.5	10.6	10.7	10.8	10.9
1	11.0	11.1	11.2	11.3	11.4	11.5	11.6	11.7	11.8	11.9
2	12.0	12.1	12.2	12.3	12.4	12.5	12.6	12.7	12.8	12.9
3	13.0	13.1	13.2	13.3	13.4	13.5	13.6	13.7	13.8	13.9
4	14.0	14.1	14.2	14.3	14.4	14.5	14.6	14.7	14.8	14.9
5	15.0	15.1	15.2	15.3	15.4	15.5	15.6	15.7	15.8	15.9
6	16.0	16.1	16.2	16.3	16.4	16.5	16.6	16.7	16.8	16.9
7	17.0	17.1	17.2	17.3	17.4	17.5	17.6	17.7	17.8	17.9
8	18.0	18.1	18.2	18.3	18.4	18.5	18.6	18.7	18.8	18.9
9	19.0	19.1	19.2	19.3	19.4	19.5	19.6	19.7	19.8	19.9
10	20.0	20.1	20.2	20.3	20.4	20.5	20.6	20.7	20.8	20.9
11	21.0	21.1	21.2	21.3	21.4	21.5	21.6	21.7	21.8	21.9
12	22.0	22.1	22.2	22.3	22.4	22.5	22.6	22.7	22.8	22.9
13	23.0	23.1	23.2	23.3	23.4	23.5	23.6	23.7	23.8	23.9
14	24.0	24.1	24.2	24.3	24.4	24.5	24.6	24.7	24.8	24.9
15	25.0	25.1	25.2	25.3	25.4	25.5	25.6	25.7	25.8	25.9
16	26.0	26.1	26.2	26.3	26.4	26.5	26.6	26.7	26.8	26.9
17	27.0	27.1	27.2	27.3	27.4	27.5	27.6	27.7	27.8	27.9
18	28.0	28.1	28.2	28.3	28.4	28.5	28.6	28.7	28.8	28.9
19	29.0	29.1	29.2	29.3	29.4	29.5	29.6	29.7	29.8	29.9
20	30.0	30.1	30.2	30.3	30.4	30.5	30.6	30.7	30.8	30.9
21	31.0	31.1	31.2	31.3	31.4	31.5	31.6	31.7	31.8	31.9
22	32.0	32.1	32.2	32.3	32.4	32.5	32.6	32.7	32.8	32.9
23	33.0	33.1	33.2	33.3	33.4	33.5	33.6	33.7	33.8	33.9
24	34.0	34.1	34.2	34.3	34.4	34.5	34.6	34.7	34.8	34.9
25	35.0	35.1	35.2	35.3	35.4	35.5	35.6	35.7	35.8	35.9
26	36.0	36.1	36.2	36.3	36.4	36.5	36.6	36.7	36.8	36.9
27	37.0	37.1	37.2	37.3	37.4	37.5	37.6	37.7	37.8	37.9
28	38.0	38.1	38.2	38.3	38.4	38.5	38.6	38.7	38.8	38.9
29	39.0	39.1	39.2	39.3	39.4	39.5	39.6	39.7	39.8	39.9
30	40.0	40.1	40.2	40.3	40.4	40.5	40.6	40.7	40.8	40.9
31	41.0	41.1	41.2	41.3	41.4	41.5	41.6	41.7	41.8	41.9
32	42.0	42.1	42.2	42.3	42.4	42.5	42.6	42.7	42.8	42.9
33	43.0	43.1	43.2	43.3	43.4	43.5	43.6	43.7	43.8	43.9
34	44.0	44.1	44.2	44.3	44.4	44.5	44.6	44.7	44.8	44.9
35	45.0	45.1	45.2	45.3	45.4	45.5	45.6	45.7	45.8	45.9
36	46.0	46.1	46.2	46.3	46.4	46.5	46.6	46.7	46.8	46.9
37	47.0	47.1	47.2	47.3	47.4	47.5	47.6	47.7	47.8	47.9
38	48.0	48.1	48.2	48.3	48.4	48.5	48.6	48.7	48.8	48.9
39	49.0	49.1	49.2	49.3	49.4	49.5	49.6	49.7	49.8	49.9
40	50.0	50.1	50.2	50.3	50.4	50.5	50.6	50.7	50.8	50.9

Calculated by F. E. Pratt, U.S. C. E.

Index

INDEX

Page

Tech of Old Beardson's House / 1
 Plat West of old Warehouse X 2-3-4-5
 Plat A - Frontage on Cent Ave X 0-4-50 n tra |
 Cemetery Location X 54-6-57
 Cross - section off Sutherland Creek X 7 above
 Waites Bridge X 7
 Luse's Private Road X 88
 Reservoir in Foster Canyon ^{incl} 9-18-71 55-56
 Beckley - Goff X 9-18-71 55-56
 Cl. 51 T25 S R5 W - E to S.W. Cor 19
 35th Change of Survey - B4 Plat X 20
 Buildings in Lot 29 B1, Plat A X Plat A1
 NE E Cor Plat C A + C X 21
 Cl. 50 54 & 59 T25 S, R5 & 6 W X 22-26 incl.
 Randd from Sec. Cor ²⁴¹⁹ ~~25130~~ X 24/19 27/28 83
 Cl. 50 T25 S R6 W X J. W. Knight 29-31 incl
 Random Line running South from m 77
 Angle in N. Eddy Ct. 4 B. 7 to S. R5 W T25 S R5 W 32
 Cl. 50 T25 S R5 W X 50-34-35
 Cl. 52 T25 S R5 W X 36-37
 B/K 2 Plat. D X 38-39-40-41 Plat. D - 43-44
 Plat. I - Ditch (Drainage) X 41-42
 Theil School House X 45
 Plat X Boundary 46 - K creek - 49-47-48
 49-47-48

Index

Cemetery, Location
Beckley-Golf.

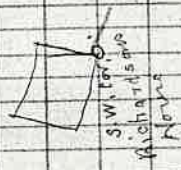
Page

54

75

The Fox Richardsons
House, North
Tombstone.

Umatilla 98th Mo.



3925
Will 96th Mo.

Mar. 17th 1910
Strong.

cut

100 in

0.0	8.2	91.8	92.6	0.0
+5.0	7.4	92.6	92.7	0.0
1	7.0	93.0	92.8	0.2
+5.0	6.4	93.6	92.9	0.7
2	6.2	93.8	93.0	0.8
+5.0	5.8	94.2	93.1	1.1 ✓
3	5.7	94.3	93.2	1.1 ✓
+5.0	5.3	94.7	93.3	1.4 ✓
4	5.5	94.5	93.4	1.1 ✓
+5.0	5.8	94.2	93.5	0.7 ✓
5	5.5	94.5	93.6	0.9 ✓
+5.0	5.7	94.3	93.7	0.6 ✓
6	5.6	94.4	93.8	0.6 ✓
+5.0	6.2	93.8	93.9	0.0
7	6.0	94.0	94	0.0

SW 1/2
Richardsons
House

PLAT West of Old
Warehouse
Sta Dist. Ab. A.R. C.C. M.C.

197188

177052

167076
27.1

157157

137470

117639

107199

87769

77099

47706

27860

17345

1/4 Cor 17/16

167271 P 2.88 NW Cor

Nov. 21, 1910

Worstell
Fleser
Burrings } 10 hrs
Carmelt
Coppert
West

80° 50' 5 1/2"
1/4 Cor

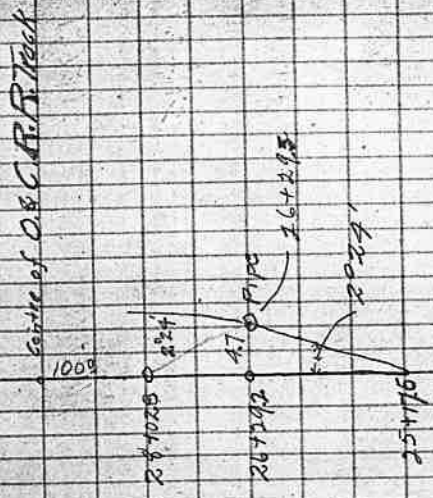
N 89° 43' E N 99° 00' E

50° 15' R

90° 02'

PLAT West of Warehouse
 Sta. Dist A to AR C.C. MC.

28+020		N89°43'E	
26+293	224'	581°53'N 518°50'E	
25+176	224'	N49°48'E	
23+816			
24+249			
20+535		N89°43'E	N99°00'E



PLAT A
Frontage on Central Avenue
Block I

lot 1	484.3
" 2	463.9
" 3	622.3
" 4	573.7
" 5	499.1
" 6	499.3
" 7	773.3
" 8	748.8

Chord on Curve

Offsets

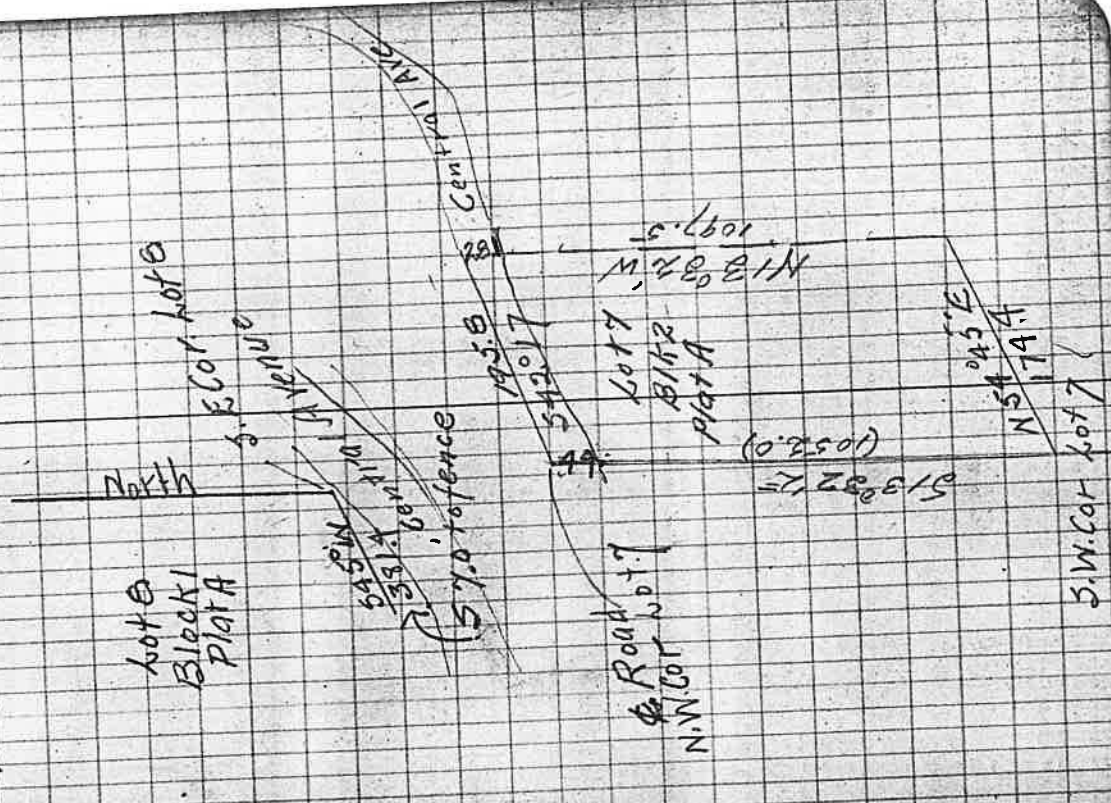
lot 8	0+00 = 0
	0+50 = 16.2
	1+00 = 31.0
	1+50 = 42.5
	2+00 = 52.0
	2+50 = 60.0
	3+00 = 67.5
	3+50 = 69.0
	4+00 = 69.0
	4+50 = 65.5
	5+00 = 57.5
	5+50 = 53.0
	6+00 = 42.0
	6+50 = 30.5
	7+00 = 15.5
	7+48 = 0

Offsets

lot 7	0+00 = 0
Chorded East	0+50 = 15.5
	1+00 = 30.5
	1+50 = 45.5
	2+00 = 56.0
	2+50 = 64.3
	3+00 = 69.5
	3+50 = 73.0
	4+00 = 73.0
	4+50 = 71.0
	5+00 = 66.5
	5+50 = 59.0
	6+00 = 49.2
	6+50 = 37.2
	7+00 = 23.0
	7+50 = 7.5

Nov 23, 1910
Worstell
Billings } Ahw's
Bruce }
Gornett }

Subdivisions in
old Plat A



BM on South Side of Creek Top 2" Hub,

130.0'
2' 5"

Nov. 26, 1910
Strong
Normal
Faster
Fallings } 1 1/2 Hours

Sta	B.S.	H.I.	F.S.	Elev.
0+00	278	100.00		100.00
Right Bank BM				
		102.78	322	99.56
0+30			350	99.28
0+90			743	98.35
0+180			718	94.80
0+210			845	94.33
0+290			886	93.92
0+380			875	94.03
0+430			804	94.74
0+480			754	95.24
0+520			667	96.11
0+550			396	98.82
0+600			300	98.95
Top of Stake North Bank +60			278	100.00

Sta.	Tie for Reservoir	Dist	Angle	Site in Foster Canyon	Dist	Angle	Site in Foster Canyon
							20°30' M.C.
							A.F. C.C.
							Stone in Wagon Road in Foster Canyon
A 10							
	Gross						
A 10	114.6	18°36'		S 10°36' E	519.0 E		
A 9	260.1	14°26'		S 17°00' W	516.5 W		
A 8	227.5	47°15'		S 31°02' W	531.2 W		
A 7	438.2	11°14'		S 15°41' E	515.5 E		
A 6	302.5		13°33'	S 4°35' E	545.0 E		
A 5	239.3	3°11'		S 18°08' E	518.20 E		
A 4	203.9		8°45'	S 14°57' E	515.10 E		
A 3	385.0		33°34'	S 23°42' E	523.40 E		
A 2	716.6		4°52'	S 47°19' E	547.25 E		
A 1	2482.2 2482.2		2°29'	S 51°57' E	551.50 E		
0+00	456.7		36°37'	S 54°20' E	559.15 E		
10+10				N 49°03' E			

Dec. 27, 1910.

Warstell
Bruce
Cooper
Cortich

5 hours

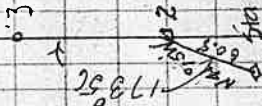
Dec. 28, 1910

Warstell
Bruce
Cooper
Cortich
McGee
Martin

4 hours

(6 mi)

(6°04')



10+00 - N.W. Cor. C141
725.5 R4W.

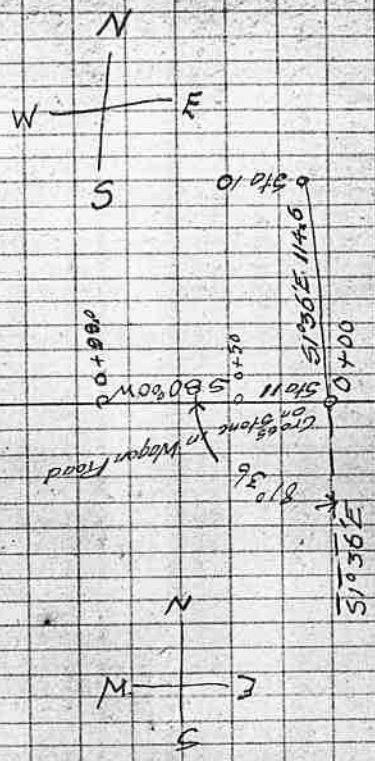
N 39° 03' E

10+10 on N. Side C141
725.5 R4W.

Dam Line in Foster Canyon
Levels for West Side

Sta	B.S.	H.I.	F.S.	Elev.
0.0				200.00
	4.92			
		204.92		
Crookstone 0+22			9.95	194.97
0+32.0			4.92	200.00
T.P.	1063		9.21	209.71
0+37.0		215.34		
			10.37	205.00
0+44.0			5.34	210.06
T.P.	1105		2.23	213.11
		224.16		
0+50			8.95	215.21
0+55			4.16	220.00
T.P.	1084	234.75	0.25	223.91
0+60			9.75	225.00
0+69.0			4.75	230.00
T.P.	1068	245.89	0.59	234.16

B.M. Stone



N 40° 00' E

Levels for Dam Site West Side

Sta.	B.S.	H.I.	F.S.	Elev
0+72.0		245.84	10.84	235.00
0+79.0			5.84	240.00
0+88.0			0.84	245.00
T.P.	11.60	257.33	0.11	245.73
0+99.0			7.83	248.50
1+03.0			6.33	250.00
1+12.0			1.33	255.00
T.P.	11.34	267.54	0.13	256.80
1+20.0			7.54	260.00
1+30.0			2.54	265.00
T.P.	11.73	278.94	0.33	267.21
1+40.0			8.94	270.00
1+50.0			3.70	275.00
T.P.	11.90	290.52	0.32	278.67
1+61.0			10.52	280.00
1+74.0			5.52	285.00
1+98.0			0.52	290.00

Dam Site
Levels for West Side.

Sta.	B.S.	HI	I.S.	Elev
1+97.0	1190	3022.2	0.20	2902.2
2+00			7.22	295.00
2+10.5			6.41	295.81
			2.22	300.0

B.M. Elev 500.00 Add with nail init.

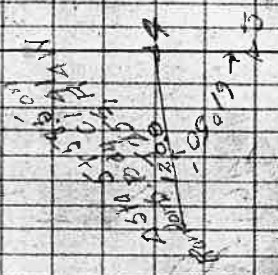
Sta.	Levels for East Side	Dam Site.	Side
0+00	B.S. HI	F.S.	200.00
	11.40		
0+10	211.40	6.40	205.00
0+17.0		1.40	210.00
T.P.	19.53	9.53	210.85
0+25.0	221.38	16.38	215.00
0+33.0		1.38	220.00
T.P.	11.20	0.31	221.07
0+40.0	232.27	7.27	225.00
0+50.0		1.10	231.17
T.P.	11.11	0.10	232.17
0+56.0	243.28	8.28	235.00
0+62.0		3.28	240.00
T.P.	11.11	0.24	243.04
0+66.0	254.15	9.40	244.75
0+73.0		4.40	249.75
T.P.	11.60	0.29	253.86

B.M. Stone

Sta.	Levels B.S.	Dam Site H.I.	for East Side I.S.	Refer
0+810		265.76	10.7	254.76
0+860			5.70	259.76
0+920			0.70	264.76
T.P.	11.23	276.23	0.46	265.00
1+020			6.50	269.73
1+090			6.50	274.73
T.P.	11.54	287.99	0.28	275.95
1+160			7.70	279.79
1+250			2.70	284.79
T.P.	10.07	297.31	0.25	287.24
1+320			7.50	289.81
1+40			2.60	294.71
T.P.	7.91	303.40	4.82	295.49
1+480				300.00
			2.40	3010

B.M. Oak Stump

Sta.	West Side Traverse 100' Contour	Dist	100' Contour	6.C.	M.C.
Δ 11	255.7	5°28'		540°24'E	540°25'E
Δ 10	143.1	24°25'		536°56'E	537°00'E
Cross a Small Camp	256.5			512°31'E	512°25'E
Δ 9	228.8		12°53'	525°24'E	525°08'E
Δ 8	180.2		7°58'	533°16'E	533°25'E
Δ 7	47.2		8°34'	541°50'E	541°55'E
Δ 6	47.1		42°01'	583°51'E	583°55'E
Cross a Small Camp	153.2			541°51'E	541°00'E
Δ 4	85.5	47°05'		535°34'N	535°25'W
Δ 3	107.6		17°28'	518°06'W	518°00'W
Δ 2	84.4		4°57'	513°09'N	512°55'W
Δ 1 = West End of Proposed Dam	210.5	66°51'		566°00'W	566°05'W
0+00			81°36'		
Δ 10					



= 0+00 + in stone in Wagon Road

100' Contour
 Traverse West Side
 Foster Canyon

Sta. Cross Wire
 Fence
 Δ 25 + 1690
 Δ 20

Traverse Dist 586.5

Δ L. A L. A R

M.C. 50° 03' 50° 55' W

12920'
 017

Δ 22	3318	017	6° 13'	513° 26' W	513° 26' W
Δ 21	3657		6° 13'	513° 45' W	513° 40' W
Δ 20 = on limb (200)	6941	030		57° 30' W	57° 30' W
Δ 19	1799	9° 36'		58° 00' W	58° 00' W
Δ 18	796 (51513)		40° 58'	517° 36' W	517° 30' W
Δ 17	2913	2° 57'		523° 20' E	523° 15' E
Δ 16	997		1084	520° 25' E	520° 30' E
Δ 15	3240		1896	530° 29' E	530° 25' E
Δ 14	2983		524'	549° 15' E	549° 10' E
Δ 13	1360		6° 38'	559° 39' E	559° 30' E
Δ 12	2022	2053'		561° 17' E	561° 20' E
		8053'		540° 38' E	540° 35' E

(45 to 60 on)
 54929
 (2.6 to 10 on)

100 Contour East Side
Foster Canyon

Sta. A14 (2260.6)	191.1	12050'	145°30'E	M.C.
Δ16	82.7	15000'	N59°25'E	
Δ15	255.2	30851'	N73°30'E	
Δ13	98.7	2048'	575°36'E	575°50'E W
Δ12	284.5	2°30'	557°38'E	557°56'E

100 Contour West Side Foster Canyon

Δ29 = A17 (5509.5)	453.5	14601'	557°21'W	557°00'W	Cross Wire Fence A28 + 266.0
Δ28	1137.5	17°12'	N23°22'E	N28°55'E	
Δ27	863.0	16°05'	N6°10'E	N6°15'E	
Δ25	1088.0	64°00'	N22°15'E	N22°25'E	
Δ24	223.3	9490'	N86°23'E	N81°55'E	
			5103'N		Traverse GTS Along Contour between Δ23 & Δ24

5 days dinner
5 days starch

Site	Dist.	Δ C	Δ F	G.C.	M.C.
100 Contour East Side Foster Canyon					
	Continued on page #17				
Δ 11	127.8		7°44'	557°18'E	557°25'E
	236.7			565°08'E	565°05'E
Δ 10		4°19'		560°47'E	560°45'E
Δ 9 (last N.)	80.8	1234'			
	152.0	10°09'		548°09'E	548°15'E
Δ 8				538°00'E	538°00'E
Δ 7	99.1	6°57'		537°09'E	537°10'E
	111.2	19°00'		512°09'E	512°02'E
Δ 6	56.5	10°41'		512°28'E	512°35'E
Δ 5	280.4		28°50'	530°18'E	530°25'E
Δ 4	275.8			519°37'E	519°30'E
Δ 3	100.6	10°41'		528°04'E	528°05'E
Δ 2	197.7	17°30'		180°00'E	180°00'E
			97°58'		

Δ 1 = East End of Proposed Dam

0709 = top of stone in wagon Road

Sta. Dist A b DIR CC. MIC

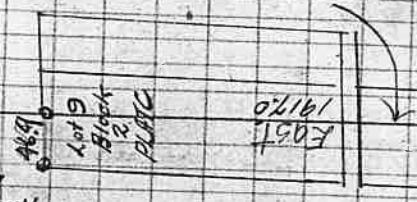
11				
12				
13				
14				
15				
16				
17				
18				
19				
20				
21				
22				
23				
24				
25				
26				
27				
28				
29				
30				
31				
32				
33				
34				
35				
36				
37				
38				
39				
40				
41				
42				
43				
44				
45				
46				
47				
48				
49				
50				
51				
52				
53				
54				
55				
56				
57				
58				
59				
60				
61				
62				
63				
64				
65				
66				
67				
68				
69				
70				
71				
72				
73				
74				
75				
76				
77				
78				
79				
80				
81				
82				
83				
84				
85				
86				
87				
88				
89				
90				
91				
92				
93				
94				
95				
96				
97				
98				
99				
100				

PIPE
S.W. Cor. #51
1917.0
2350'
56610E
Track

The S.W. Cor. C1, S1, T. 2 S. R. 5 W

Nov 4, 1910
Vorstell
Fleser
Billings
Cornett
Cooper

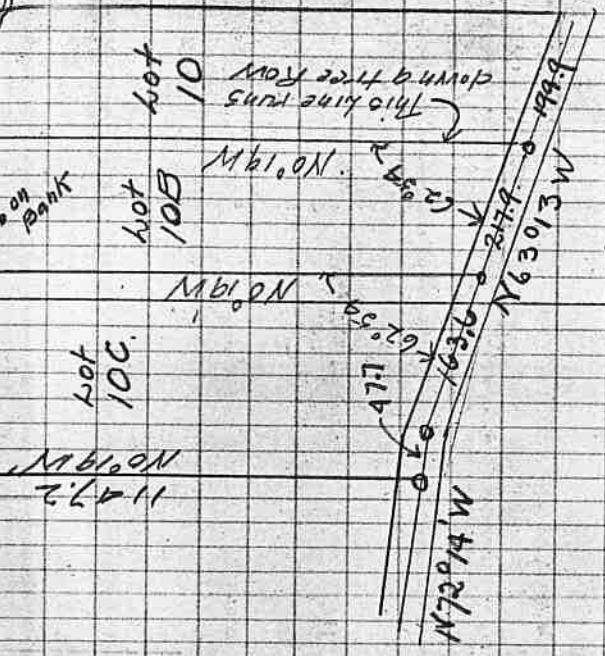
N. E. Cor. Lot 9
Block 2, PLATC



S.W. Cor. C1, S1, R. 5 W
T 2 S. R. 5 W

To Portland

3rd Change of Survey Block 4, Plat I (Taylor Orchard)



Nov 2, 1910

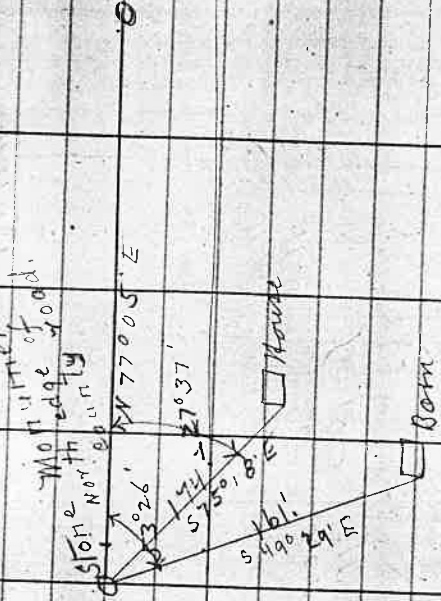
Worstell
Fleser
Billings
Garnett
Cooper

5 Hours

Location of
in Lot 2 Blk. I Plat A.

Buildings
I Plat A.

See book 13 page 8 for details



Lot 1.

Lot 2.

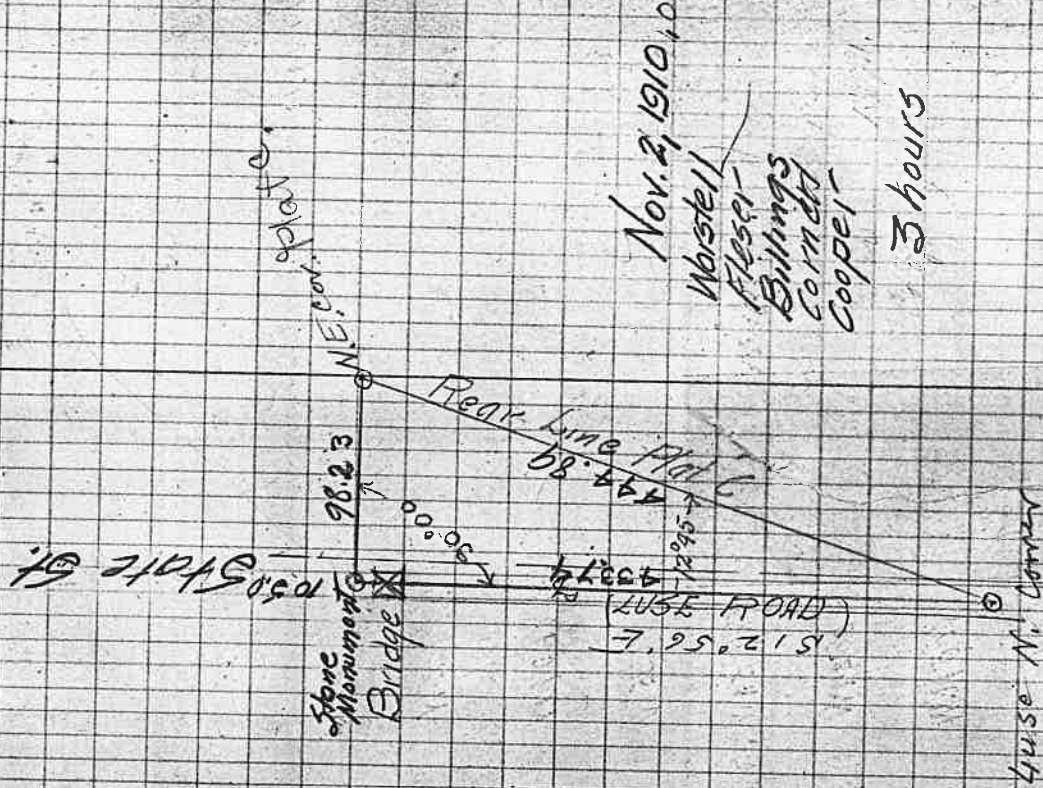
Blk. I

Plat A.

Nov. 3rd 1910
Fleecer }
Billings }
Cooper } A.M.

Strong's Notes

N.E. Cor Plat C.



Nov. 2, 1910
Norstell
Fleecer
Billings
Cornell
Cooper

3 hours

Oct 26 1910

Worstell
Fisher
Billings
Cooper
Carmack
Holley
10 hours

Stagger Stone

Stone N.E. Cor-
C15.4

49+247
N 77° E 74'
To Anchor Post

Oct 25 1910

Worstell
Fisher
Billings
Cooper
Cornell
Test

5 hours

Sta	Dist	AL	AR	G.C.	M.C.
494092					
47695					
25+944					
4+663					
51+44.1	95°25'			50°5E	51°5E
"				N84°50'W	N95°50'W
49+320			50°5'	N89°35'W	58°10'W
27+437			00°04'	N89°57'W	58°06'W
21+028		00°02 +		N89°55'W	58°06'W
11+281		00°01 +		N89°54'W	58°15'W
49+297		89°20		N00°3'W	N1°0'W
44+252		00°0'		N0°16'W	N1°00'W
0+0			89°37	N89°33'W	58°15'W

C/ 54.859, 7255 AF. 5&6 W

Sta.	Dist	AL	AR.	C.S.	M.C
------	------	----	-----	------	-----

73+103

50°21'E 590SE

74+425

00°06'

73+052

50°58E 710SE

71+750

" "

69+904

" "

66+279

" "

64+636

" "

62+173

" "

58+983

" "

56+674

" "

54+701

" "

51+244

Wardell
 Files
 Billings
 Corbett
 Cooper
 Hill

10 Hours

Oct 27, 1910

C154 & 59 T 255, P 526 W

Sta.	Dist.	Δh	ΔF	C.C.	M.C.
16+02.2					
18+28.2					N 89° 00' E
11+44.5					
10+51.2					
8+96.4					
6+59.7	190.2				S 89° 59' E N 89° 15' E
1+69.5		00° 06'			S 89° 53' E N 89° 20' E
0+00		63° 32'			S 76° 21' E S 62° 15' E
87+85.7		12° 47'			S 13° 34' E S 14° 20' E
86+59.7		17° 14'			S 30° 40' W S 33° 55' W
82+01.7			4° 31'		S 05° 14' E S 1° 25' E
80+66.3		0° 30'			S 02° 16' E

16+02.2

18+28.2

11+44.5

10+51.2

8+96.4

6+59.7

1+69.5

0+00

87+85.7

86+59.7

82+01.7

80+66.3

N 89° 00' E

S 89° 59' E N 89° 15' E

S 89° 53' E N 89° 20' E

S 76° 21' E S 62° 15' E

S 13° 34' E S 14° 20' E

S 30° 40' W S 33° 55' W

S 05° 14' E S 1° 25' E

S 02° 16' E

154859 T 25 2 17 586W

Sta. Dist 46 A.F. C.C. M.C.

21091 = 39+190

27+694

26+390

27+694

21+368

27+994

588°02'E 599°00'E

289°33'E 189°32'E

589°55'E 180°10'E

189°46'E 188°55'E

589°59'E 189°05'E

1°31'

0°22'

0°19'

0°15'

Nov 3, 1910

Worstell
Fisher
Billings
Jest
Cooper
Carmath

27+694

045
21-368

3" Oak Post from (Worstell)
25" Fir beam
57°40'E 173°
and 30" Fir
beam 59°05'E 291'

Oct 28, 1910

Worstell
Fisher
Billings
Jest
Cooper
Carmath

C154 & 50, T 255, P 586 W

Sta. Dist DL DR C.C. M.C.

39+19.0 = 31+09.1

38+02.4

37+20.5

35+5.3

32+48.8

29+06.5

27+97.2

25+08.0

21+24.2

16+78.8

0+00

500' 15" E 51° 00' E

51° 00' E 500' 15"

509' 5" W 500' 30"

500' 27" E 51° 10' E

500' 15" S 100' E

N 89° 58' W

388' 02.5
50° 15' E
Check for Bearings

39+19.0

Oct 28 1910
Marshall
Fisher
Cooper
Billings
C. P. Hill
Tread
5 Hours

Sta	Random	Dist	line for Sec	Cor	R5	R6
		ΔL	ΔR	C.C.	24/19	26/30
141102			0°36'		N30°15'E	N12°20'E
8+61.4			15°33'W		N2°33'E	N1°38'E
6+78.6		13°42'			N13°00'W	N13°45'W
3+88.6			4°31'		N0°42'E	N0°03'W
1+69.5	219.1	2°41'			N3°49'W	N4°35'W
6+100 9+85.1			65°57'		N10°08'W	N1°55'W
8+08.2					N9°48'W	
6+88.9						
5+18.5						
2+59.9						
0+00 32+46.8		58°43'			N89°45'W	N89°30'W
					N1°02'W	

Oct 29, 1910
 Wortell
 Flosser
 Billings
 Test
 Gannett
 Cropper

continued from page #27

Sta. Angle Dist. Angle P.R. C.C. M.C.

Point in County
Road.
3+30

1/2 COP
928+7027

23+451

20+347

17+446

15+454

00'06"

00'06"

1°59'

2°49'

3°12'

N0°35'E

N0°41'E

N0°47'E

N2°46'E

N0°00'W

N0°10'W

N0°05'E

N0°05'E

N1°55'E

N0°55'W

Cor. bet Sec 19, 5W
Sec 27, 6W

23300

N1°40'W

Sta.	Dist	ΔL	ΔT	C.C.	M/C
63+459 60+194	226.5		4°20'	S00°13'W	S00°05'E
57+454 57+454	274.0	1036'		S1°49'W	S1°05'W
53+133 53+133	432.1	296'	3°52'	S2°20'E	S2°15'E
50+229 50+229	290.4	498'		S0°13'W	S0°25'W
46+169 46+169	406.0		9°00'	S4°31'W	S3°25'W
41+838 41+838	435.1	2°37'		S2°29'E	S3°25'E
36+987 36+987	485.1		00°17'	S00°08'W	S0°50'E
17+350	1962.7				
10500 105+938	1736.0	90°00'		S00°09'E	S1°00'E
9+74.8		00°07'		S89°51'W	S89°01'W
0+00 N.W. Cor. C158 N.E. Cor. C158		89°47'		S89°28'W	S89°05'W
4+663				N0°15'W	

31+10 Centre of County Road

15+438 Stone NW Cor. 58

Oct 31, 1910

Worstell
Fisher
Billing
Trest
Coppel
Carlin

10 hours

C1 #58, T355
ANVOR J.M. FROTH

7 hours

Warstell
Fleese
Billings
Leib
Copper
Cement

Nov 1, 1910

S.E. 1/4 of T. 38
Reestablished from B.T.

Sta.	Dist	AL	AT	C.C.	M.C.
12+61.7			187'		
10+11.3					
7+87.0					
4+42.3					
87+25.8		71°55'		N 89°45' E 188.40'	
62+96.3	124.5	6°58'		S 18°11' E 514.56'	
84+23.9	172.4	7°43'		S 11°29' E 514.28'	
82+76.8	155.1	5°59'		S 3°46' E 64.35'	
80+45.4	223.4		2°08'	S 2°13' W 81°10' R	
74+16.1	629.3	5°37'		S 0°05' W 50.55' E	
70+86.1	530.0		2°18'	S 5°42' W 55.10' W	
66+01.7	424.4	1°00'		S 3°24' W 58.35' W	
	315.8			S 4°33' W 53.40' W	

Ck. 58, T255 A 5W

Sta. Dist ΔL ΔR C.C. M.C.

16+29.3 = 86+59.7

12+92.3

40°07'

14+85.0

17°03'

12+82.9

N33°41'E N38°00'E

N73°48'E N75°00'E

S89°09'E N79°50'E

Worstell
Flaser
Billings
Coppitt
Kornett

2 hours

Nov. 3, 1910

← 10.0

22.783

54.504

34 Oak Post

from which

a 24' Oak bears

N55°25'E, 13.0

and 24' B Oak

bears N59°52'W

57.3

157905

N73°48'E

Angle on North Body
C140

Next
1184
1745
53.1

N.E. Cor.
Lot 11 Bk 1
PLATA

2344.1
South →

1587

S.E. Cor. Lot 10 Bk 2
PLATA
Nov. 7, 1910

Worstell
Fleeter
Billings
Cooper
Carnell
7 Hours

Random line
Running South
from an angle
in North Body
C140
T.255 R.24W

Lot 11
Block 1
PLATA

Central Avenue

Lot 10
Block 2
PLATA

N
W

Random West
Body C140
T.255 R.25W

1490

Nov. 3, 1910

Worstell
Fleeter
Billings
Cooper
Carnell
5 hours

N.W. Cor.
C140

Lot 1 Bk 1
PLATA
N 155° 25' E
147.6
85.0

36.3
Space

South →

CENTRAL AVENUE

Lot 5
Block 2

Lot 10
Block 2
PLATA

Sta.

Dist

As

AR

CS

MC

9+60.1

= 0+00

Habin North Side County Road

Nov 1, 1910

9601

9601

N 87° 00' E, NS 6102

3+30

88° 25'

N 6° 35' E, No 101

Waistell
Flester -
Billings
Test
Coppert
Cbrnett

1 Hour

1/4 Cor

West Bdy	C1.50, T 255, R 5W	M.C.
Sta.	Dist	A.C.

Dist	A.C.
------	------

3+290 + 6+566 E

0794
81520
17430

7+381

4+372

0+00

1109

96°53'

On Randon Line N. Bdy
Wattleland

14+59A

13+47A

515°45'N

1601'

500'6E 50°50E

50°10'E 57°50'E

589'93W

6°54'

Nov 7, 1910

Worstell
Fleiser
Birkings
Cooper
Cornett
Teat

4 Hours

17+230 Centre of
O.S.C.P.A. Track

10+10 - N.W. Cor. C150T-885
1750'

1109
5006/50

14+59A

Sta. 13+47A is 05 North
and 49 West of Pipe
Sink of S.W. 1/4 of NE 1/4 of Sec 17

North Boundary C1.50, T-255 R-5W.
Sta Dist. Δ L. Δ F C.C. M.C.

21+594.7 } On East Edge
9+308 } C1.50

0+00 }
52+80.0 }

38+76.0

22+19.2

17+80.4

14+75.6

11+74.2

6+01.7

6+93.8

4+174

1+269

0+00 = N.W. Cor. C1.50.

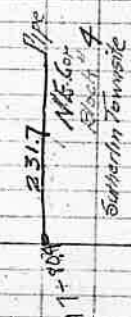
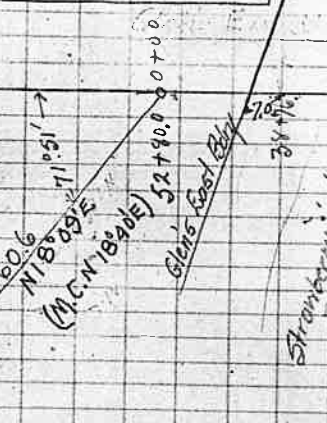
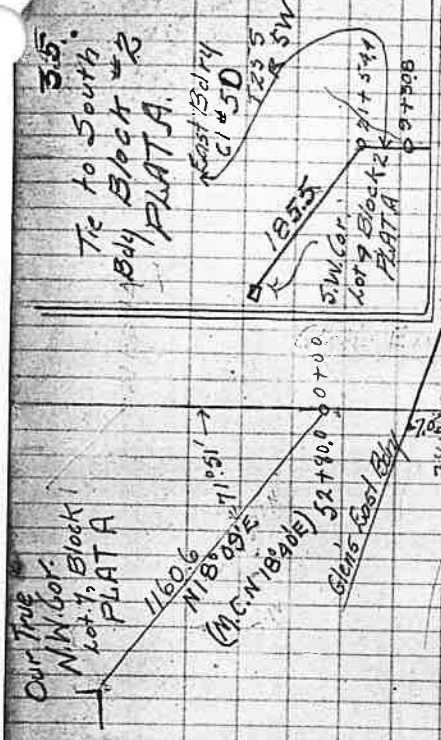
South 50°30'E

90°00'

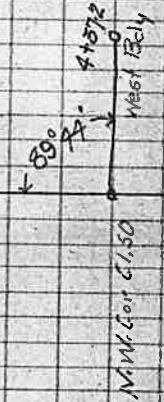
N89°25'E

East N89°15'E

50% K.S.



Nov 5, 1910 Heavy Fog
Worst 11
Fleiser
Bithings
Test
Cooper
Gormet



C152 725 S. R5W 56

Sta. Dist. Az. ΔF C.C. MC.

47+0.19

45+3.25

30+4.48

21+8.75

19+7.49

4+0.15

0+0.00
N.E. COR. C152

16+8.3

500° 23' E 51° 15' E

53° 49' 12" W

34044.1
34035

Nov 16 1910
Worstell
Fleser
Billings
East
Cooper
Carmeth
3 Hours

165.5

45+3.25
165.5
S.W.
CORNER
of
PLATE

21+8.75
28° East
to
D. Stone

Nov 5 1910
Worstell
Fleser
Billings
Cooper
Carmeth
East
N.E. COR. C152
3 Hours

0+0.00
S.W.
CORNER
of
PLATE

34

Dial

A₂

AR

C.C.

MC

19+26.8

12+23.6

7410.5

6+57.6

0702.0 Stone

0700Hub

89°43

NS9°54E

2023E

N. E. Cor. P.S. 12
1855
1916S

741050

SB Post
ADIA R 25 to RR.

Nov 6, 1910

Worstell

Fleser

Billings

1855

Corbett

Cooper

Sta. Dist. ΔL ΔR C.C. M.C.

Moore & Co

TEST

BILLINGS

FLEET

CORNETT

COOPER

9783.3

8757.5

50740.1

21781.6

0+00 =

983.3

867.5

5040.1

2181.6

N 85° 17' E

S 0° 28' E

S 67° 29' E

N 10° 25' W

N 85° 17' E

S 0° 28' E

S 67° 29' E

N 10° 25' W

SW Cor Bldg Plat D

NW Cor Bldg Plat D

NE Cor Bldg Plat D

N.W. Cor of Plat I and Section F

Sta.	Distance	Angle	Bearing	Notes
A10	212.2	30°17'	S35°17'E 53°30'	
A9	282.4	76°34'	S55°00'E 55°10'	
A8	242.1	21°25'	S61°34'E 58°35'W	
A7	416.0	22°13'	S60°09'E 55°25'E	
A6	996.2	32°41'	S82°2'E 58°25'	
A5	613.4	35°41'	N64°57'E N64°40'	
A4	315.3	24°00.7'	N72°16'E N65°10'E	
A3	346.4	24°27'	N53°23'E N55°10'E	
A2	173.0	69°46'	N28°46'E N38°4'E	
A1	509.2	10°47'	S81°28'E 58°35'E	
O+00	306.3	91°47'	N87°45'E N88°3'E	
N.W. Cor	158.2		S0°28'E	

Traverse of Creek Through
 Block #2 P.A.T. MC.
 Dist. ΔA ΔF C.C. MC.

112/100 Δ10
 Becomes a
 Creek again

Drainage Ditch
 Central Ave South
 of Pannys

Sprinkles into Swamp
 West of the Centre

129/5
 4015
 3780 3670
 3742
 23+30
 186.

The day after Election
 (1916) Nov 9, 1910
 1700
 1710 2715

24/100
 1636 0110 2111 95 6 Hours
 24/100 Cooper
 Street

316.2 P.A.T. & Central Ave. & Lorie way.

Sta. $\Delta 6$ Dist. $\Delta 6$ AF C.C. MC
 Traverse of Creek Through
 Block & PLAT D

S.W. COR PLAT 26A6
 N.W. COR PLAT 14

Point in
 Devils Lane
 A 13

A 12

A 11

9515

4410

5137

3509

N526°K N8916°K

56119°E 58125°E

53704°E 53710°E

56846°E 56843°E

321 50 214
 118 20 13 7 200
 118 18

201

112 11

Traverse of Drain Ditch
 from Devils Lane
 Sta. Dist Ak AFT C.C. MC
 Sta.

N.W. Cor PLATT
 The 5265
 Δ 2 6965
 A1 5744
 Kind of a Swamp
 at 9=0+00

52°10' E 5000 E
 N 71° 30' E N 1/32
 567° 03' E 5000 E
 5500 E

10611
 41° 18
 62° 03'

Nov 9/1910
 Warstell
 Nest
 Billings
 Cornwell
 Cooper
 Hour
 15 18 42
 Ditch dug by 6/4-01
 0+00 = Swamp to A1

Traverse of A Ditch from
 Central Avenue
 Sta. Dist Ab AF C.C. MC

Intersection of Devils Lane & ^{cont'd} West
 1542.2'

Picket Post
 West End Park

Anchor Post

144A

102.27

455.5

40.55

307.5

58.21'

157.9

94.94

N88°1'N N8810'N

N14°20'N N1420'E

N55°15'K N5515'E

N12°54'E N1254'E

58.22'E

Δ3

Δ2

Δ1

Δ7 = 0+10

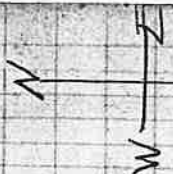
615 Δ3
 Fence along
 Central Avenue

42.410

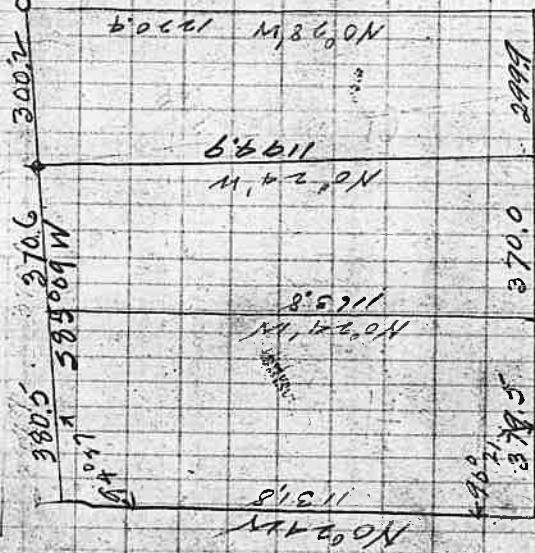
41.318

Swamp up to 411

EVANS TRACT
PLATD



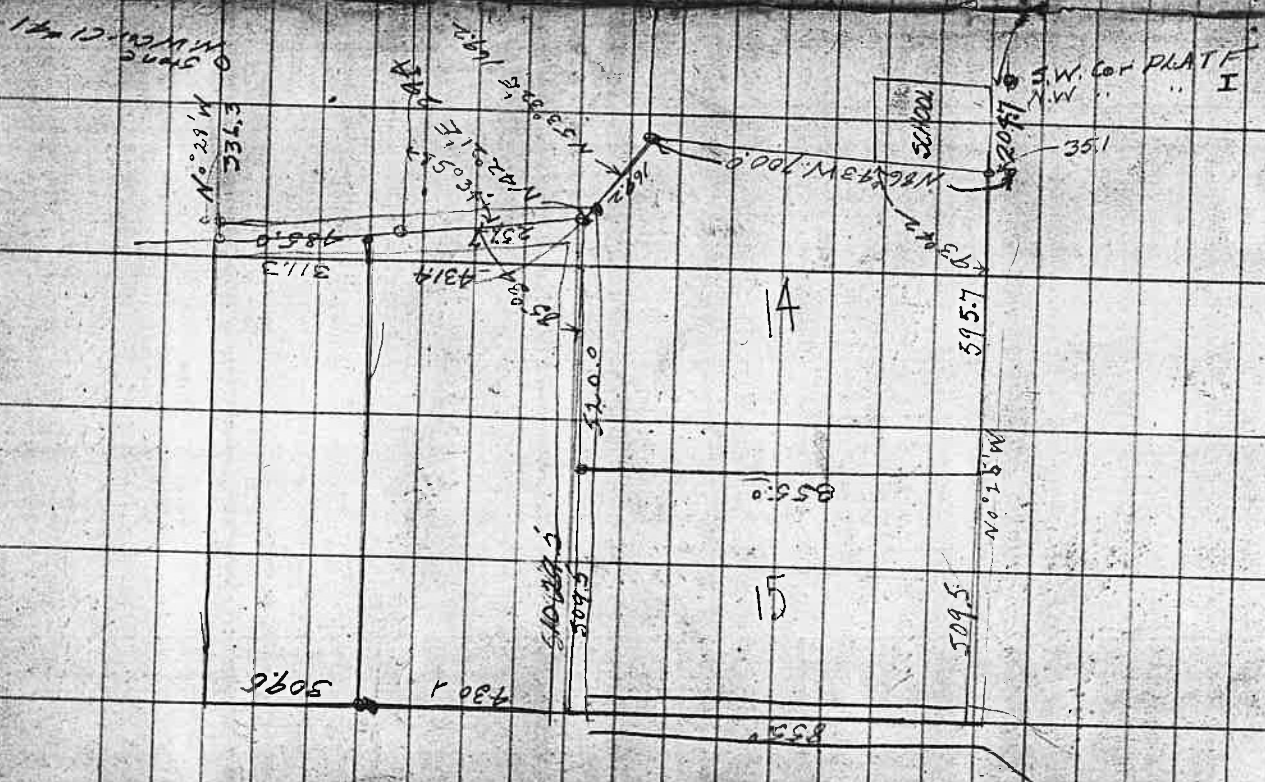
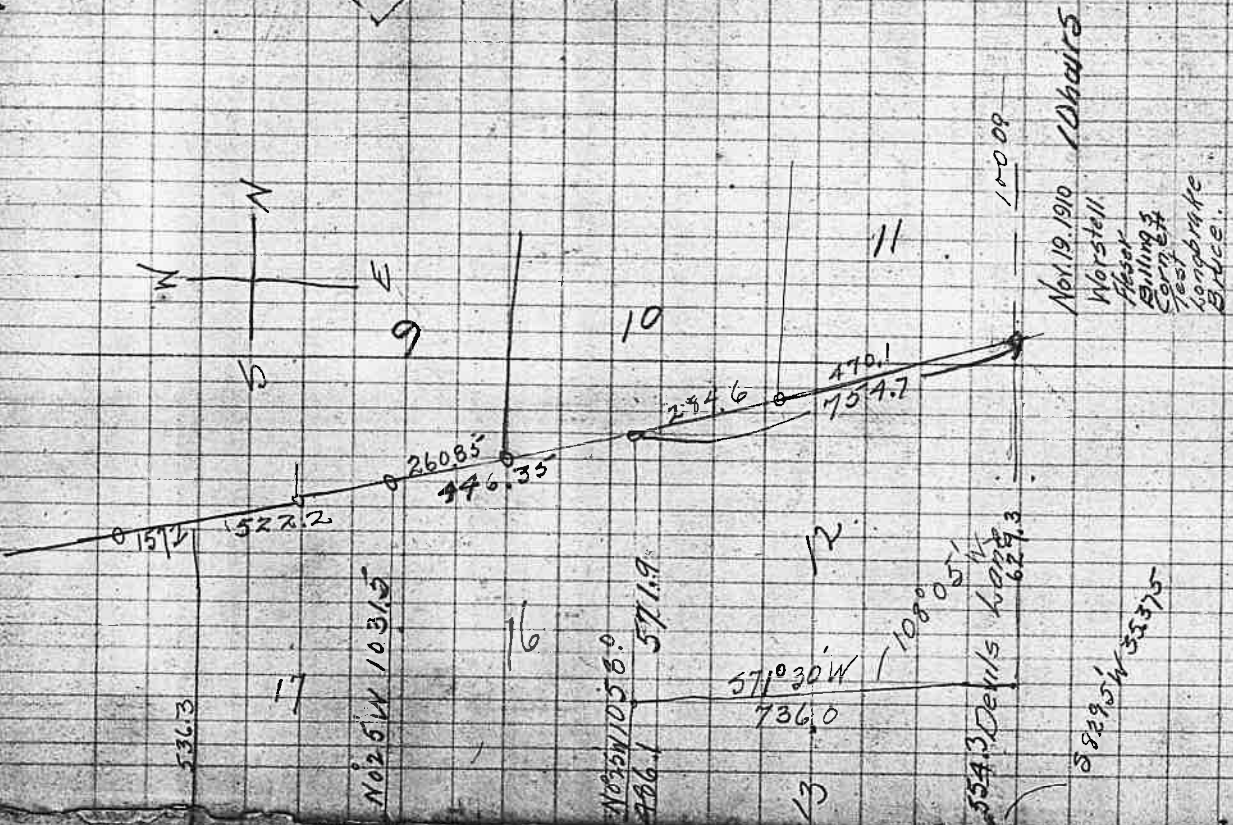
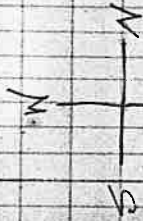
N.E. COR
EVANS TRACT
ASHTABEC
5



Nov 18 1910

Noted
Billings
Carpenter
Hawes } 3 Hours

44



Survey of Thiel School House

Sta. Diet ΔL AR C.C. M.C

East Bay School Tract
15+61.0

227.7

West Bay School Tract
13+33.3

1333.3

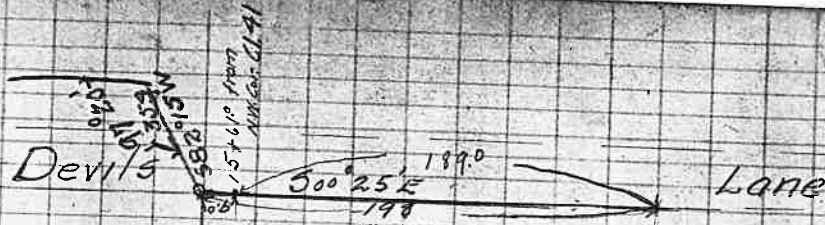
N.W. Cor. C1
0+00 41

East

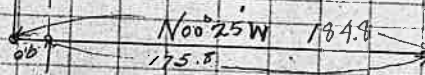
N89°32'E

In C1A1, T20'S, R-5-W

45



East RR 7



N.W. Cor. C1

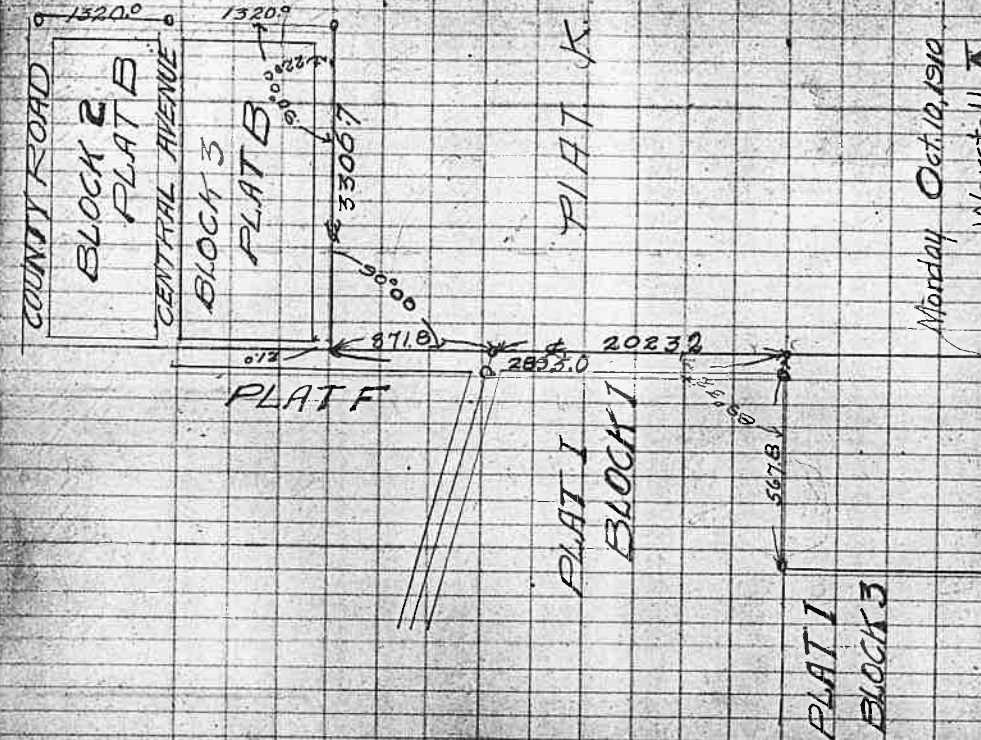
N86°43'W 228.2

Oct 3, 1910
2 P.M.

(6 hrs.)

Worstell
Fleser
Billings
Test
Cooper

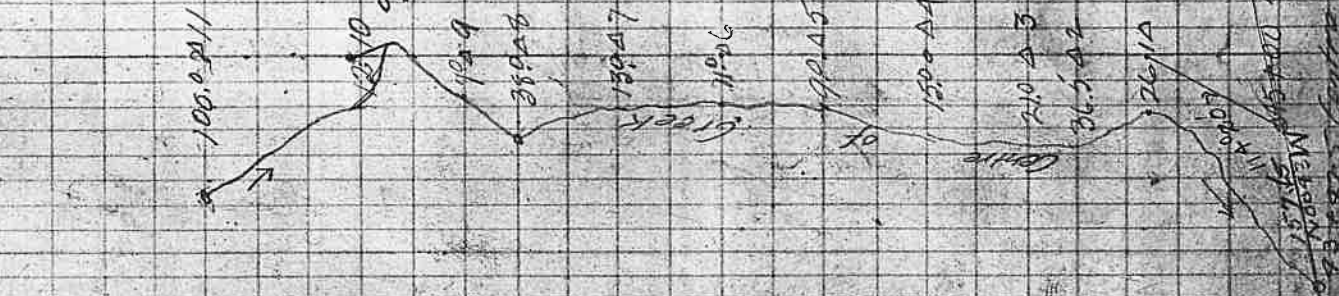
Church 46.



Monday Oct. 10, 1910
 Warstell
 Fleser & Chain
 Billings, Flag
 Best
 Cooper Team

Transverse of West Fork of
Creek through Plat. 47

Oct 11, 1910
Worstell
Fleser
Billings
Leaf
Cooper.
Quit at Noon



Sta.	Dist	Δ L	Δ R	C.C.	M.C.
Δ 10	47.4	90.95	51°53'E	516.05	5
Δ 18	307.6	39.20	53°12'W	537.6	W
Δ 9	278.2	11.21	53°58'W	525	4W
Δ 8	244.5	4.56'	53°54'W	531	0W
Δ 7	358.4	5.904	54°09'E	520.5	E
Δ 6	203.8	32.90	51°50'W	513.0	W
Δ 5	551.7	31.59	54°34'W	543	W
Δ 4	209.5	63.03	51°4'E	519.0	E
Δ 3	480.0	3.00'	51°17'E	516.3	E
Δ 2	270.3	29.83	54°05'E	546.3	E
Δ 1	270.0	20.18	56°23'E	566.3	E
0+00	-45+00	East Edge Plat I			

see map 18. 010
Δ 3 - 0.00

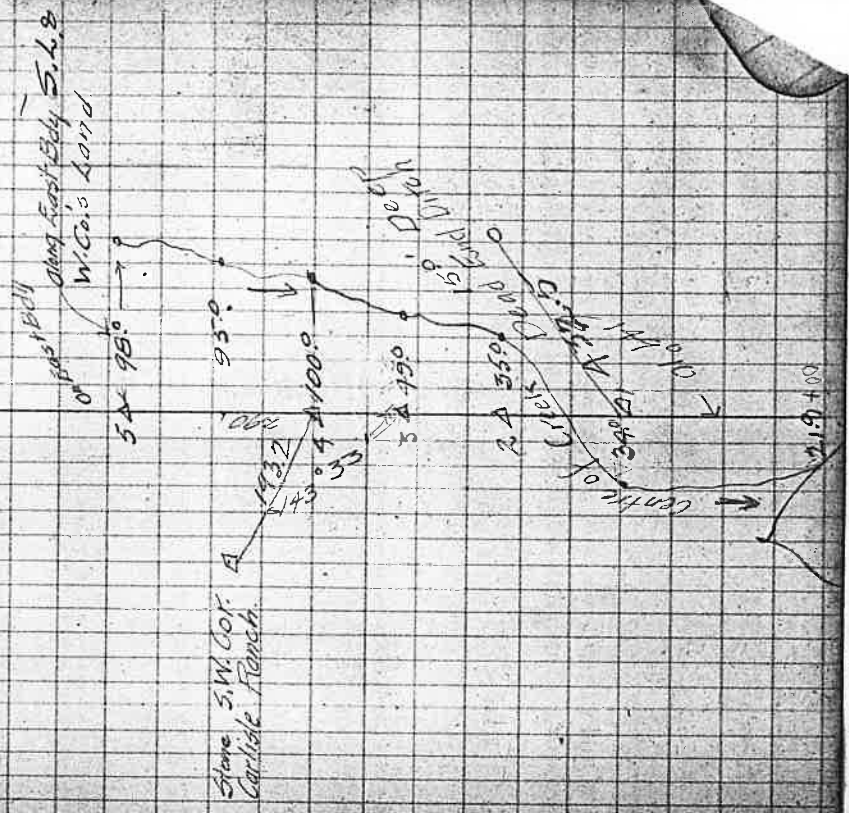
157.5 West W 45.000 East Edge Plat I

Traverse of East Fork of
Creek through Plat K
Sta Dist. AL AR C.C. M.C.

A5	630.0		537°26'E	531'50"
Δ4	236.6	55°14'	565°40'E	566'05"
A6	179.1	10°28'	516°08'E	516'25"
Δ7	344.5	13°53'	589°01'E	589'28"
A1	535.0	39°17'	549°44'E	549'58"
0+100.0 Sta 500 West Fork See page 47	33'52"		516°12'E	

48

Oct. 12, 1910
Worstell
Fleser
Billings
Test
Cooper



Random Line in Plat A
Dist 44 AR C.C. M.C.

Sta

NW 601
C150

15490

0+00

Hub in E of Road

4311

460591

250' E of S.E. Cor
Block #1, PLAT I

N 81° 35' E N 1130' E

S 47° 14' E S 1730'

NW 601 190' North of Old hub
stone

E 150

S 67° 15' E 151'

S.E. Cor Block #1 Plat I
Lot Line

N 25° 15' E 40'

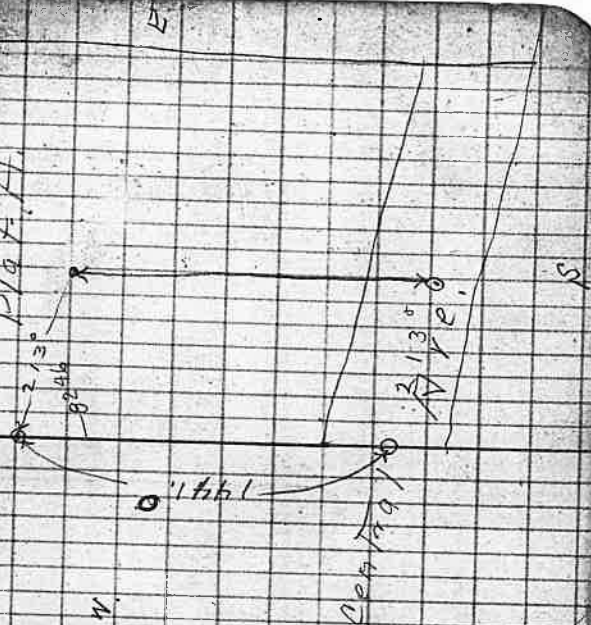
57.

Dec 21st 1940

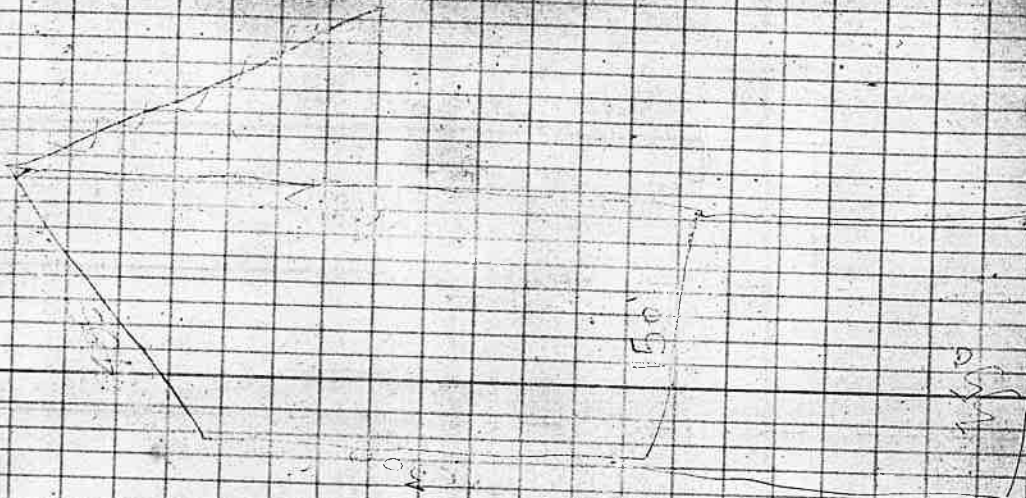
Survey S.W. Side of
Lot 2 B.K. 1 Plat. A.
Stang
Billings.

M.

Lot 2
B.K. 1.
P/4 x 17.



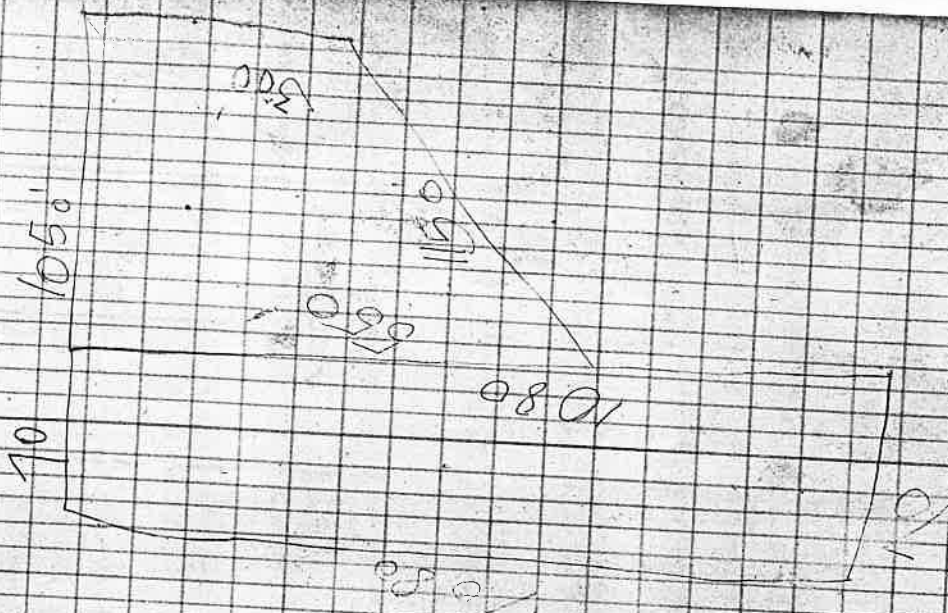
52



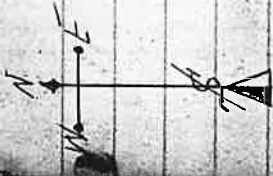
150

150

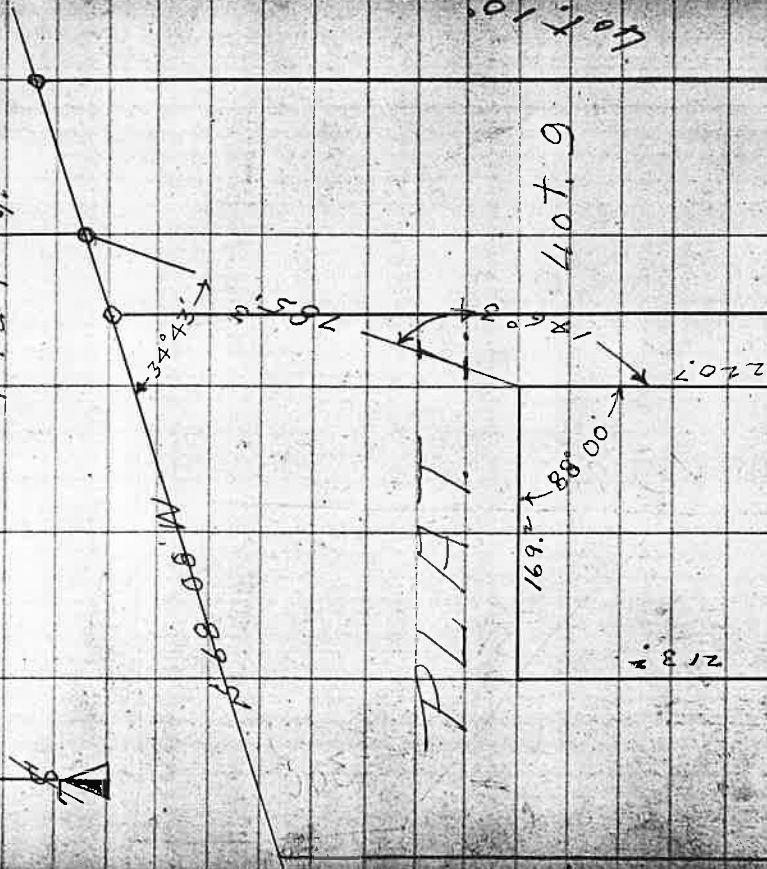
53



Cemetery location
in Plat I.



Lot 23 407.22
Plat I.E.



PLAT

Lot 8. B.I.K.I

Dec. 27th 1910

Strong
Zean May & Crest.

Lot 10

(for River over Site)
mid @ E of Canyon

Hemlock
B.M. Elev 23981 13009

Traverse of Wagon Road in Foster Canyon above Dam Site	Dist	ΔL	A.F.	C.C.	M.C.
Δ11	284.4	27°52'			523°41'E 52353 E
Δ10 - B.M. (251.59)	216.3		27°17'		557°01'E 55285 E
Δ9	243.9		11°05'		562°06'E 56220 E
Δ8	422.1				557°44'E 55735 E
Δ7 - 305.94 to B.M. (299.24)	212.3		5°35'		554°09'E 55495 E
Δ6	240.6		19°30'		534°39'E 53451 E
Δ5	206.4		27°45'		56°54'E 57°06'E
Δ4	214.4		19°06'		526°00'E 52615 E
Δ3	216.5		9°34'		535°34'E 53530 E
Δ2	167.1		16°08'		519°26'E 51933 E
Δ1	205.3		25°04'		55°38'W 55°35 W
Δ11 - 20 to Dam Site	184.8		4°14'		51°36'E
Δ10					

Sta. Dist AL DR GC ME

700 West Side Contour

A13

2539

575° 06E

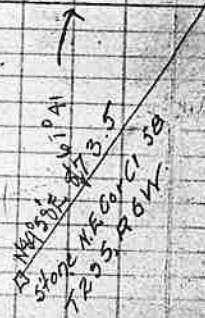
A12

2330

249.6
249.8

551° 36.1E 551° 42E

Sta	Dist	A L	Plot M	DR	GC	M.C.
A 11	101.5	120.50'		40°49'	552°00'E	552°55'E
A 10	195.7	15°34'			N 87°11'E	N 86°15'E
A 9	183.3	14°54'			577°15'E	578°10'E
A 8	173.0			48°03'	562°16'E	563°12'E
A 7	188.9	84°34'			N 69°41'E	N 68°45'E
A 6	150.9			10°17'	525°40'E	526°35'E
A 5	270.0			19°09'	538°07'E	536°50'E
A 4	157.7	41°35'			555°06'E	556°05'E
A 3	161.8			41°34'	513°31'E	514°50'E
A 2	158.4	26°44'			555°05'E	556°00'E
A 1	155.5				528°21'E	
0 + 00	873.5				526°21'E	524°15'E

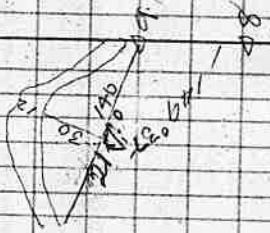


Sta.	Dist	Al	DR	C.C.	M.C.
A23	112.1	603'		S22°16'E	S23°10'E
A22	72.6		1650'	S16°13'E	S17°05'E
A21	192.6		3394	S33°03'E	S33°58'E
A20	53.7	14°16'		S66°22'E	S67°15'E
A19	76.1	16°53'		S52°06'E	S53°00'E
A18	57.4		5028'	S55°13'E	S36°10'E
A17	112.8	23°53'	(23°53')	S85°41'E	S86°31'E
A16	96.0	45°10'		S61°48'E	S62°40'E
A15	85.1		5794'	S16°38'E	S17°30'E
A14	240.5	7°44'		S67°57'E	S68°55'E
A13	135.2		45°36'	S60°13'E	S61°05'E
A12	58.7	40°50'		N74°01'E	N73°00'E
	114.5			S64°50'E	S65°4'

Sta.	Traverse	Check through	AR.	C.C.	M.C.
A2	Dist	AR.			
	Dead Forward				
A1	990.7 6' Deep		58° 41'	627° 42'E	527° 35' E
	181.3			586° 23'E	587° 20'E
	24 on Crutch 0700 TRAVERSE 10' DEEP	31° 17'			
A32				555° 06'E	
A31	187.2	17° 52'		144° 49'E	144° 00'E
A30	150.3	14° 01'		162° 41'E	161° 50'E
A29	222.1	16° 50'		176° 12'E	175° 30'E
A28	86.9		5° 15'	556° 28'E	567° 30'E
A27	92.4		21° 41'	561° 43'E	561° 35'E
A26	250.8	4° 02'		583° 24'E	584° 00'E
A25	106.2	43° 54'		519° 22'E	580° 08'E
A24	83.7	13° 12'		535° 38'E	530° 35'

Great Traverse through Plat M

Sta.	Dist	Δ L	Δ R.	C.C.	N.C.
Δ 11	133.3	27.82		N50°47'E	N49°55'E
10 ³⁰ deep 50 wide	216.7	17.99'	15°0'	N68°26'E	N67°30'E
Δ 9 fork	166.9	00.57		N53°16'E	N52°25'E
Δ 8	144.6	4.91'	2°23'	N54°13'E	N53°20'E
Δ 7 widens to 20'	33.10			N61°17'E	N61°35'E
Δ 6 wide	127.7	56.59'		N59°04'E	N58°15'E
Δ 5	68.0		75°04'	563°57'E	564°50'E
Δ 4	158.2	16.17'		N40°14'E	N39°20'E
Δ 3	182.2		13°57'	N56°31'E	N55°35'E
Δ 2	238.4	10.23'		N42°34'E	N41°35'E
Δ 1	104.7	75.03'		N52°57'E	N51°00'E
0+00 - Δ 11 55'				602.00E	
Δ 10					

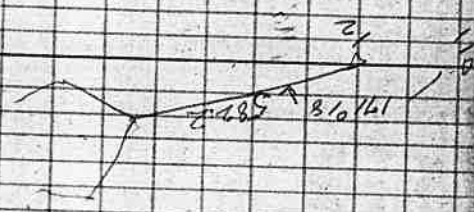


Creek Traverse "M"

Sta.	Dist	AL	A.R.	C.C.	M.C.
Sta	B.S.	H.I.	F.S.	Elev	
(800)	269	92.87	349	8938	
(500)	714	93.52	452	8900	
(400)	080	89.80	120	8860	
(650)	729	95.94	809	8785	

Creek Traverse through Plat "M"

Sta	Dist	AL	A.R.	C.C.	M.C.
A 15	170.7				
A 14		71° 55'		N 24° 57' E	N 24° 57' E
A 13	219.4	23° 16'		583° 08' E	583° 55' E
A 12	226.9		96° 23'	559° 52' E	560° 33' E
	134.5			N 23° 45' E	N 23° 45' E



Preliminary Levels for South Ditch to 1961-64

6A

Hub where Route Spills into Road L. (Henderson Ferry)

Sta.	B.S.	I.I.	F.S.	Elev.
(663)	3.87	10287		200.00
(600)	6.50	10584	4.53	99.34
(1244)	6.43	10517	7.10	98.74
(1300)	1.09	9866	7.60	97.57
(1050)	5.98	10225	2.39	96.27
(600)	3.36	9857	7.04	95.21
(800)	2.05	9664	3.98	94.59
(700)	3.32	9711	2.85	93.79
(600)	5.06	9813	4.04	93.07
(1200)	4.63	9711	5.65	92.48
(400)	2.36	9367	5.80	91.31
400	5.00	9560	3.09	90.60
			5.72	90.18

6131.8

South Ditch to Plat M^o in County Road
 225 = 733.0 from pipe Range line

Sta	Dist	ΔL	ΔR	C.C.	M.C.
Δ24	199.1	49°58'	67°43'	N50°24'W N0°34'W	N51°25' N1°20'W
Δ23	148.1		87°28'	N68°74'W	N69°00'W
Δ22	199.9	36°19'		S24°15'W	S23°25'W
Δ21	99.7	44°46'		S60°34'W	S59°45'W
Δ20	199.7		71°23'	N74°40'W	N75°20'W
Δ19	297.6	88°19'		S33°57'W	S33°55'W
Δ18	149.6		40°57'	N57°44'W	N58°30'W
Δ17	149.4	111°42'		S81°19'W	S80°35'W
Δ16	296.9		150°57'	N13°01'E	N12°20'E
Δ15	230.3	11°59'		S42°04'W	S41°20'W
Δ14	199.3	68°04'		S54°03'W	S53°20'W
Δ13	149.8	65°32'		N57°53'W	N58°35'W
Δ12	348.4	65°32'		N73°4'E	N6°55'E

South Ditch Through Play " "

Sta	Dist	As	DR	C.C.	M.C.
Δ36	397.9	58°02'		N89°06'W	N89°06'W
Δ35	331.4	13°13'		N31°04'W	N31°52'W
Δ34	294.1	18°42'	116°54'	N77°51'W	N89°00'W
Δ33	304.0	39°21'		54°51'SW	44°30'W
Δ32	242.8	63°58'		584°36'W	5834°5'W
Δ31	99.2	23°01'		N31°26'W	N32°20'W
Δ30	350.0		81°26'	N8°25'W	N9°20'W
Δ29	150.8	80°55'		589°59'W	589°05'W
Δ28	99.1	34°01'		N9°06'W	N9°58'W
Δ27	228.4		141°04'	N24°55'E	N24°08'E
Δ26	267.5	41°08'		563°51'W	563°06'W
Δ25	98.0			N15°01'W	N15°50'W

Δ25: 733 on
East Bdy
Mangerin

South Ditch through Plot A

Sta.	Dist.	M.	A.R.	C.C.	M.C.
A49	197.1	36.29			
A48	198.8		47°56'	N27°09'W	N28°10'W
A47	198.8	13.46'		N75°03'W	N76°05'W
A46	295.7		25°58'	N61°19'W	N62°25'W
A45	199.3			N87°11'W	N88°15'W
A44	99.4	58°09'		N29°08'W	N30°00'W
A43	299.4	38°00'	115°06'	N6°52'E	N6°00'E
A42	149.7	59.23		57°46'W	57°50'W
A41	43.7		53°00'	N54°01'W	N55°00'W
A40	192.9	15°04'		57°59'W	57°00'W
A39	198.8	32°28'		568°03'W	567°10'W
A38	198.2	44°52'		N69°29'W	N60°51'W
A37	286.6		74°21'	N14°57'W	N15°30'W

22.00'

69.

9908-09

South Ditch Through Plot "M"

Sta.	Dist	A.C.	A.R.	C.C.	M.C.
A 53	295.4				
A 57	100.0				
A 51	153.2				
A 50	104.6				
			41°35		
					N 85° 46' W N 86° 25'
					552.41 W 551.91
					583.25 W 587.25
					N 63° 38' W N 64° 3' W

West Bell
Lon E. in County Road &

12.9.3 = Pip
269.1
388.4

30° 44'

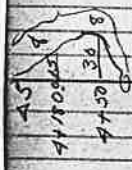
32° 57'

B.M. Tr. Core 566.01 / 464.50
 Assumed Elevation 200.00

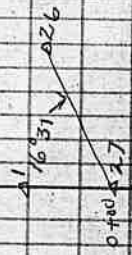
Sta.	B.S.	I.I.	FS	Elev
	2.49			200.00
Ditch Bottom			7.11	195.33
T.P. 3+14.0	11.51		0.45	201.99
4+24.0	4.45		0.45	215.05
		213.50		
		217.50		
7+43.0			12.78	208.72
	1.01	205.73		
22+81.0	3.28	198.54	9.42	196.31
23+70			12.97	185.62
	1.68	187.30		
26+00			12.82	174.48
	3.18	177.66		
5 Stakes NE Cor beginning of 40+35			2.91	175.25
0+00				
Ditch Bottom 1+10	1.32	176.57		
			Hand Level	155.7
T.P. 3+40	1.66	173.56	4.67	171.90
Grack 4+34.0			17.3	156.26
Grack 5+40			10.6	163.00

	Profile for North Edge Bechtley Coff Land			
	B.S.	H.I.	F.S.	Elev
214	728	1796.3	1.34	172.25
7+19			2.95	177.8
8+09			4.00	175.03
T.P.	11.10	190.32	0.41	179.32
T.P.	6.65	196.39	0.58	189.74
9+64.0			6.30	196.1
11+51			2.20	194.20
T.P.	1.26	184.78	12.87	183.52
T.P.	3.14	175.02	12.90	171.88
14+76			12.80	163.20
16+04			2.20	174.80
17+26.0			12.35	162.67
18+27.0			5.00	170.00
19+27.0			9.90	165.10
T.P.	1.35	172.51	3.86	171.10
20+75			1.20	171.30
T.P.	0.18	159.96	12.73	159.96
T.P.	0.21	147.79	12.38	147.58

Sta.	BS.	Profile for North Boundary Beckley Goff Land	HI	F.S.	Elev
			14774		
T.P.	0.88		13528	12.89	13440
24+00				0.90	134.90
T.P.	0.75		12307	12.96	122.32
25+15.0				Hand Level	99.7
26+64.0				5.30	117.8
T.P.	1.42		119.49	5.00	118.07
27+92.0				21.8	97.7
28+98				6.90	113.10
T.P.	1.73		109.19	12.03	107.46
T.P.	2.67		99.21	12.65	96.54
	2.83		89.38	12.66	86.55
Stone				11.57	77.81
51+10					
White Flag				Hand Level	67.1



A5	Creek #2 in Plot A1	2795'	51°20'E	5210'E
A4	Sta. Dist 1580	1803	G.C. 529°45'E	M.C. 529°55'E
A3	171.9		511°02'E	511°55'E
A2	221.6	1730	528°32'E	329°20'E
A1	112.3	11055'	590°27'E	541°00'E
A5	593'		534°44'E	
Creek #2 in Plot A1				
A6	105.8		N11°33'E	N10°30'E
A6	522.6	4697	N34°44'W	N35°35'W
A5	463.3	5192'	N6°28'E	N15°35'E
A.A	532.1	705'	N9°23'E	N8°35'E
A5	269.7	2199'	N12°26'W	N15°20'W
A.R	445.5	2808'	N15°42'E	N14°50'E
A1	369.4	3158'	N41°20'E	N46°30'E
			N63°51'E	



Use same tangent 54720 W to
Tangent 614 E Tangent 50

OTPO-A27
TANGENT

Worstell
Fisher
Billings
Coppert
Zeeb
7 hours

Oct 29, 1910

52' 5" Oak Ferry from
which 0.40' White Oaks
beats N 89° 15' W 72.1
and 15' 36" Oak
beats 54° 35' E
Var. R. 100. 89.1

Oct 29, 1910

Worstell
Fisher
Billings
Zeeb
Copper
Coppert

Winniford Place

Sta. 2+474
13+20.0
11+94.1
11+09.0
9+81.6
8+84.5
7+68.9
6+67.7
6+02.1
3+86.4
1+140
4 Cor bet
318.3 R.

100° 30' W 100° 30' W

84° 08'

85.1

97.1

N 89° 38' W N 80° 40' W

2° 23'

N 89° 38' W
S 87° 18' W

1+66.5

Whinniford Tract

Sta Dist AL AR C.G. M.D.

13+20.0

12+47.31

11+86.3

10+52.6

8+99.7

7+95.6

6+88.5

7+55.2

Nelson Nelson

Cor - SW. Cor of NW 1/4 of SE 1/4 Sec 36

8' Oak Post
10' N.W. Corner
18' W. Oak Post
5860.0 E 18.7
and 20' S. Oak
6491.85 / 8925' W 11.7

17 x 88.6 N
5899.7 E
21 x 66.3

15+20
Set 3" Oak Post
from which 21' 3" E Oak
Post is 515.00 W
and 40' E Post is 559.50 E
315

0.79 5:00 PM Jan 7 '11
NSG 2082

Weir Date	Measurements	Foster Canyon	Depth
Dec 27 '10	3 PM.		0.55
Dec 28 '10	7:00 AM.		0.24
	5:00 PM.		0.33
	7:00 AM.		0.32
	5:00 PM.		0.33
Dec 29 '10	7:00 AM.		0.50
	5:00 PM.		0.59
	7:00 AM.		0.74
	4:00 PM.		0.76
Sunday Jan 1, 11	11:00 AM.		0.67
Jan 2, 11	8:00 AM.		0.57
	5:00 PM.		0.52
Jan 3, 11	7:00 AM.		0.48
	5:00 PM.		0.44
Jan 4, 11	7:00 AM.		0.39
	5:00 PM.		0.36
Jan 5, 11	7:00 AM.		0.34
	5:00 PM.		0.32
Jan 6 '11	7:00 AM.		0.20

Very Cold

Heavy Rain

Cold

3302.9
3306.7

TABLE IV. MINUTES IN DECIMALS OF A DEGREE.

1'	.0167	11'	.1833	21'	.3500	31'	.5167	41'	.6833	51'	.8500
2	.0333	12	.2000	22	.3667	32	.5333	42	.7000	52	.8667
3	.0500	13	.2167	23	.3833	33	.5500	43	.7167	53	.8833
4	.0667	14	.2333	24	.4000	34	.5667	44	.7333	54	.9000
5	.0833	15	.2500	25	.4167	35	.5833	45	.7500	55	.9167
6	.1000	16	.2667	26	.4333	36	.6000	46	.7667	56	.9333
7	.1167	17	.2833	27	.4500	37	.6167	47	.7833	57	.9500
8	.1333	18	.3000	28	.4667	38	.6333	48	.8000	58	.9667
9	.1500	19	.3167	29	.4833	39	.6500	49	.8167	59	.9833
10	.1667	20	.3333	30	.5000	40	.6667	50	.8333	60	1.0000

TABLE V. INCHES IN DECIMALS OF A FOOT.

1/16	3/32	1/4	3/16	1/2	5/16	3/8	7/16	1/2	5/8	3/4	7/8	1
.0625	.0781	.1250	.1875	.3125	.4375	.5625	.6875	.8125	.9375	1.0625	1.1875	1.3125

TABLE VI. RADI, ORDINATES AND DEPLECTIONS.

Deg.	Radius	Mid Ord.	Tan Def.	Chd Def.	Def. for 1 Foot.	Radius	Mid Ord.	Tan Def.	Chd Def.	Def. for 1 Foot.
0°10'	3497.7	.036	.145	.291	.087	819.0	1.528	6.105	12.21	12.10'
20	1718.9	.073	.291	.582	.174	1600	3.056	12.21	24.42	24.20'
30	1145.9	.109	.436	.873	.261	1200	4.584	18.32	36.63	36.30'
40	859.4	.145	.582	1.164	.348	900	7.171	24.42	48.84	48.40'
50	674.5	.182	.727	1.454	.435	600	10.757	30.53	61.05	60.60'
10	491.2	.255	1.018	2.036	.582	400	15.441	36.63	73.26	72.80'
20	429.7	.291	1.164	2.327	.769	300	21.111	42.74	85.47	85.00'
30	381.3	.327	1.309	2.618	.956	200	26.781	48.84	97.68	97.20'
40	343.3	.364	1.454	2.909	1.143	150	32.451	54.95	109.89	109.40'
50	312.5	.400	1.600	3.200	1.330	100	38.121	61.05	122.10	121.60'
10	286.4	.436	1.745	3.490	1.517	80	43.791	67.16	134.31	133.80'
20	264.6	.473	1.891	3.781	1.704	60	49.461	73.26	146.52	146.00'
30	245.7	.509	2.036	4.072	1.891	40	55.131	79.37	158.73	158.20'
40	229.2	.545	2.181	4.363	2.078	30	60.801	85.47	170.94	170.40'
50	214.8	.582	2.327	4.654	2.265	20	66.471	91.58	183.15	182.60'
10	202.4	.618	2.472	4.945	2.452	15	72.141	97.68	195.36	194.80'
20	191.0	.655	2.618	5.236	2.639	10	77.811	103.79	207.57	207.00'
30	180.9	.691	2.763	5.527	2.826	8	83.481	109.89	219.78	219.20'
40	171.9	.727	2.908	5.817	3.013	6	89.151	115.99	231.99	231.40'
50	163.7	.764	3.054	6.108	3.200	4	94.821	122.10	244.20	243.60'
10	156.2	.800	3.199	6.398	3.387	3	100.491	128.21	256.41	255.80'
20	149.5	.836	3.345	6.689	3.574	2	106.161	134.31	268.62	268.00'
30	143.7	.873	3.490	6.980	3.761	1	111.831	140.42	280.83	280.20'
40	138.8	.909	3.635	7.271	3.948	1	117.501	146.52	293.04	292.40'
50	134.6	.945	3.781	7.561	4.135	1	123.171	152.63	305.25	304.60'
10	131.1	.982	3.926	7.852	4.322	1	128.841	158.73	317.46	316.80'
20	128.1	1.018	4.071	8.143	4.509	1	134.511	164.84	329.67	329.00'
30	125.8	1.055	4.217	8.433	4.696	1	140.181	170.94	341.88	341.20'
40	124.0	1.091	4.362	8.724	4.883	1	145.851	177.05	354.09	353.40'
50	122.4	1.127	4.507	9.014	5.070	1	151.521	183.15	366.30	365.60'
10	121.1	1.164	4.653	9.305	5.257	1	157.191	189.26	378.51	377.80'
20	120.1	1.200	4.798	9.596	5.444	1	162.861	195.36	390.72	390.00'
30	119.5	1.237	4.943	9.886	5.631	1	168.531	201.47	402.93	402.20'
40	119.1	1.273	5.088	10.177	5.818	1	174.201	207.57	415.14	414.40'
50	118.9	1.309	5.234	10.467	6.005	1	179.871	213.68	427.35	426.60'
10	118.9	1.346	5.379	10.758	6.192	1	185.541	219.78	439.56	438.80'
20	119.1	1.382	5.524	11.049	6.379	1	191.211	225.89	451.77	451.00'
30	119.4	1.418	5.669	11.340	6.566	1	196.881	231.99	463.98	463.20'
40	119.9	1.455	5.814	11.631	6.753	1	202.551	238.10	476.19	475.40'
50	120.4	1.492	5.959	11.922	6.940	1	208.221	244.20	488.40	487.60'

